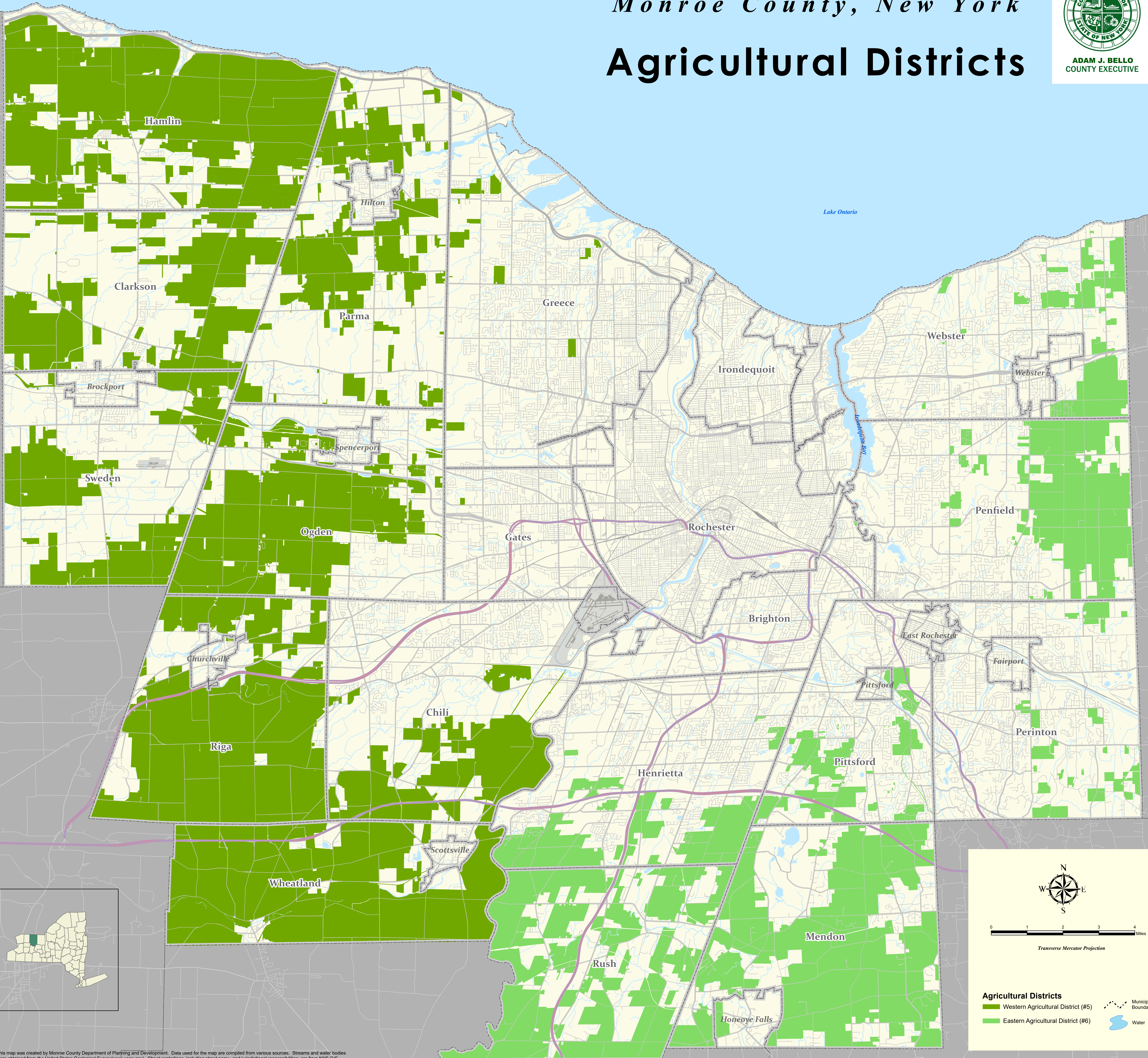


Monroe County, New York Agricultural Districts



This map was created by Monroe County Department of Planning and Development. Data used for the map are compiled from various sources. Streams and water bodies were obtained from the United States Geological Survey (www.usgs.gov). Street centerlines, including street names, and jurisdictional responsibilities, are from NYS GIS Data Hub and maintained by NYS. Municipal boundaries are maintained by the Monroe County Real-Property Tax Services.

This map is for GENERAL PLANNING PURPOSE ONLY and is NOT intended to convey site-specific information. This map is provided without guarantee for any specific or implied use and is subject to change without notice.

Date Created: December, 2024.