



VOTER TURNOUT SUMMARY REPORT 2005 GENERAL ELECTION

Monroe County Board of Elections
39 West Main Street, Rochester, New York 14614

January 5, 2006

Peter M. Quinn
Commissioner of Elections

Thomas F. Ferrarese
Commissioner of Elections

CONTENTS DESCRIPTION

General Summary	Page 1
Republican Summary	Page 12
Democratic Summary	Page 18
Independence Summary	Page 24
Conservative Summary	Page 30
Working Families Summary	Page 36
Blanks Summary	Page 42
Historical Data.....	Page 48

GENERAL SUMMARY

2005 GENERAL ELECTION
VOTER TURNOUT BY GENDER

LT/LD SUMMARY

LEGISLATIVE DISTRICT OR TOWN	TOTAL VOTERS			MALES			FEMALES		
	VOTED	REGISTERED	TURNOUT	VOTED	REGISTERED	TURNOUT	VOTED	REGISTERED	TURNOUT
CITY									
Leg. Dist. 06	1,637	3,091	52.96 %	741	1,359	54.53 %	896	1,732	51.73 %
Leg. Dist. 07	816	1,534	53.19 %	363	694	52.31 %	453	840	53.93 %
Leg. Dist. 21	5,414	13,000	41.65 %	2,341	5,576	41.98 %	3,073	7,424	41.39 %
Leg. Dist. 22	2,503	9,407	26.61 %	943	3,857	24.45 %	1,560	5,550	28.11 %
Leg. Dist. 23	6,179	12,530	49.31 %	3,037	6,027	50.39 %	3,142	6,503	48.32 %
Leg. Dist. 24	3,703	7,205	51.39 %	1,704	3,323	51.28 %	1,999	3,882	51.49 %
Leg. Dist. 25	3,523	9,674	36.42 %	1,526	4,337	35.19 %	1,997	5,337	37.42 %
Leg. Dist. 26	2,896	6,939	41.74 %	1,271	3,030	41.95 %	1,625	3,909	41.57 %
Leg. Dist. 27	5,238	12,916	40.55 %	2,087	5,332	39.14 %	3,151	7,584	41.55 %
Leg. Dist. 28	3,256	9,195	35.41 %	1,437	3,876	37.07 %	1,819	5,319	34.20 %
Leg. Dist. 29	3,871	10,891	35.54 %	1,599	4,503	35.51 %	2,272	6,388	35.57 %
TOTAL:	39,036	96,382	40.50 %	17,049	41,914	40.68 %	21,987	54,468	40.37 %
TOWNS									
Brighton	10,490	21,981	47.72 %	4,684	9,751	48.04 %	5,806	12,230	47.47 %
Chili	6,742	18,281	36.88 %	3,286	8,542	38.47 %	3,456	9,739	35.49 %
Clarkson	1,541	3,771	40.86 %	789	1,824	43.26 %	752	1,947	38.62 %
East Rochester	1,647	3,742	44.01 %	765	1,639	46.67 %	882	2,103	41.94 %
Gates	7,248	17,722	40.90 %	3,353	8,081	41.49 %	3,895	9,641	40.40 %
Greece	19,812	60,844	32.56 %	9,623	27,952	34.43 %	10,189	32,892	30.98 %
Hamlin	2,131	5,240	40.67 %	1,094	2,551	42.89 %	1,037	2,689	38.56 %
Henrietta	6,693	20,405	32.80 %	3,349	9,631	34.77 %	3,344	10,774	31.04 %
Irondequoit	15,918	34,578	46.04 %	7,371	15,384	47.91 %	8,547	19,194	44.53 %
Mendon	3,349	6,123	54.70 %	1,654	2,944	56.18 %	1,695	3,179	53.32 %
Ogden	4,448	12,102	36.75 %	2,252	5,758	39.11 %	2,196	6,344	34.62 %
Parma	2,930	9,752	30.05 %	1,469	4,698	31.27 %	1,461	5,054	28.91 %
Penfield	9,446	23,942	39.45 %	4,654	11,154	41.72 %	4,792	12,788	37.47 %
Perinton	11,697	32,231	36.29 %	5,751	14,988	38.37 %	5,946	17,243	34.48 %
Pittsford	7,926	18,799	42.16 %	3,824	8,824	43.34 %	4,102	9,975	41.12 %
Riga	2,212	3,730	59.30 %	1,070	1,771	60.42 %	1,142	1,959	58.30 %
Rush	1,217	2,508	48.52 %	612	1,208	50.66 %	605	1,300	46.54 %
Sweden	2,363	6,596	35.82 %	1,165	3,080	37.82 %	1,198	3,516	34.07 %
Webster	11,145	27,027	41.24 %	5,494	12,584	43.66 %	5,651	14,443	39.13 %
Wheatland	1,059	3,261	32.47 %	527	1,543	34.15 %	532	1,718	30.97 %
TOTAL:	130,014	332,635	39.09 %	62,786	153,907	40.79 %	67,228	178,728	37.61 %
GRAND TOTAL:	169,050	429,017	39.40 %	79,835	195,821	40.77 %	89,215	233,196	38.26 %

2005 GENERAL ELECTION
VOTER TURNOUT BY PARTY

LT/LD SUMMARY

Part 1 of 2

LEGISLATIVE DISTRICT OR TOWN	REPUBLICAN			DEMOCRAT			INDEPENDENCE		
	VOTED	REGISTERED	TURNOUT	VOTED	REGISTERED	TURNOUT	VOTED	REGISTERED	TURNOUT
CITY									
Leg. Dist. 06	565	971	58.19 %	621	1,105	56.20 %	45	109	41.28 %
Leg. Dist. 07	300	495	60.61 %	317	585	54.19 %	21	63	33.33 %
Leg. Dist. 21	1,058	2,098	50.43 %	3,223	7,509	42.92 %	126	453	27.81 %
Leg. Dist. 22	221	684	32.31 %	2,022	6,858	29.48 %	24	166	14.46 %
Leg. Dist. 23	1,380	2,647	52.13 %	3,201	5,992	53.42 %	182	554	32.85 %
Leg. Dist. 24	780	1,440	54.17 %	2,033	3,593	56.58 %	87	253	34.39 %
Leg. Dist. 25	362	916	39.52 %	2,654	6,725	39.46 %	65	230	28.26 %
Leg. Dist. 26	830	1,612	51.49 %	1,399	3,282	42.63 %	75	242	30.99 %
Leg. Dist. 27	653	1,306	50.00 %	3,844	9,110	42.20 %	89	302	29.47 %
Leg. Dist. 28	757	1,673	45.25 %	1,861	5,057	36.80 %	65	252	25.79 %
Leg. Dist. 29	767	1,676	45.76 %	2,480	6,667	37.20 %	64	263	24.33 %
TOTAL:	7,673	15,518	49.45 %	23,655	56,483	41.88 %	843	2,887	29.20 %
TOWNS									
Brighton	3,511	6,761	51.93 %	4,672	9,012	51.84 %	174	637	27.32 %
Chili	3,350	7,400	45.27 %	1,855	5,330	34.80 %	105	557	18.85 %
Clarkson	832	1,692	49.17 %	369	949	38.88 %	27	150	18.00 %
East Rochester	702	1,372	51.17 %	491	1,113	44.12 %	51	154	33.12 %
Gates	3,350	6,546	51.18 %	2,362	5,942	39.75 %	130	484	26.86 %
Greece	9,832	24,495	40.14 %	5,295	17,044	31.07 %	344	1,935	17.78 %
Hamlin	1,275	2,421	52.66 %	412	1,202	34.28 %	42	194	21.65 %
Henrietta	3,047	7,537	40.43 %	2,176	6,711	32.42 %	124	642	19.31 %
Irondequoit	6,438	12,153	52.97 %	5,572	11,850	47.02 %	316	1,117	28.29 %
Mendon	1,667	2,837	58.76 %	811	1,541	52.63 %	64	181	35.36 %
Ogden	2,366	5,291	44.72 %	1,026	2,897	35.42 %	71	353	20.11 %
Parma	1,535	4,173	36.78 %	628	2,229	28.17 %	64	306	20.92 %
Penfield	4,484	9,675	46.35 %	2,674	6,656	40.17 %	195	800	24.38 %
Perinton	5,830	13,568	42.97 %	3,128	8,890	35.19 %	207	1,021	20.27 %
Pittsford	3,947	8,220	48.02 %	2,270	5,215	43.53 %	124	499	24.85 %
Riga	1,182	1,776	66.55 %	441	810	54.44 %	57	132	43.18 %
Rush	613	1,090	56.24 %	315	642	49.07 %	15	67	22.39 %
Sweden	1,188	2,706	43.90 %	665	1,899	35.02 %	48	239	20.08 %
Webster	4,968	10,444	47.57 %	3,219	7,652	42.07 %	254	931	27.28 %
Wheatland	534	1,341	39.82 %	294	924	31.82 %	19	112	16.96 %
TOTAL:	60,651	131,498	46.12 %	38,675	98,508	39.26 %	2,431	10,511	23.13 %
GRAND TOTAL:	68,324	147,016	46.47 %	62,330	154,991	40.22 %	3,274	13,398	24.44 %

2005 GENERAL ELECTION
VOTER TURNOUT BY PARTY

LT/LD SUMMARY
Part 2 of 2

LEGISLATIVE DISTRICT OR TOWN	CONSERVATIVE			WORKING FAMILIES			BLANK		
	VOTED	REGISTERED	TURNOUT	VOTED	REGISTERED	TURNOUT	VOTED	REGISTERED	TURNOUT
CITY									
Leg. Dist. 06	49	91	53.85 %	1	8	12.50 %	356	807	44.11 %
Leg. Dist. 07	22	27	81.48 %	3	5	60.00 %	153	359	42.62 %
Leg. Dist. 21	56	111	50.45 %	11	52	21.15 %	940	2,777	33.85 %
Leg. Dist. 22	16	45	35.56 %	7	57	12.28 %	213	1,597	13.34 %
Leg. Dist. 23	60	101	59.41 %	6	28	21.43 %	1,350	3,208	42.08 %
Leg. Dist. 24	44	78	56.41 %	7	21	33.33 %	752	1,820	41.32 %
Leg. Dist. 25	20	49	40.82 %	7	36	19.44 %	415	1,718	24.16 %
Leg. Dist. 26	73	133	54.89 %	7	31	22.58 %	512	1,639	31.24 %
Leg. Dist. 27	32	85	37.65 %	11	60	18.33 %	609	2,053	29.66 %
Leg. Dist. 28	84	140	60.00 %	11	67	16.42 %	478	2,006	23.83 %
Leg. Dist. 29	50	111	45.05 %	4	50	8.00 %	506	2,124	23.82 %
TOTAL:	506	971	52.11 %	75	415	18.07 %	6,284	20,108	31.25 %
TOWNS									
Brighton	98	214	45.79 %	4	26	15.38 %	2,031	5,331	38.10 %
Chili	212	462	45.89 %	8	30	26.67 %	1,212	4,502	26.92 %
Clarkson	49	113	43.36 %	2	12	16.67 %	262	855	30.64 %
East Rochester	34	86	39.53 %	2	18	11.11 %	367	999	36.74 %
Gates	194	397	48.87 %	4	31	12.90 %	1,208	4,322	27.95 %
Greece	590	1,570	37.58 %	26	129	20.16 %	3,725	15,671	23.77 %
Hamlin	55	127	43.31 %	3	9	33.33 %	344	1,287	26.73 %
Henrietta	160	491	32.59 %	2	30	6.67 %	1,184	4,994	23.71 %
Irondequoit	357	704	50.71 %	11	49	22.45 %	3,224	8,705	37.04 %
Mendon	58	96	60.42 %	0	3	0.00 %	749	1,465	51.13 %
Ogden	139	360	38.61 %	4	22	18.18 %	842	3,179	26.49 %
Parma	92	254	36.22 %	3	24	12.50 %	608	2,766	21.98 %
Penfield	158	429	36.83 %	3	28	10.71 %	1,932	6,354	30.41 %
Perinton	200	465	43.01 %	2	23	8.70 %	2,330	8,264	28.19 %
Pittsford	100	191	52.36 %	4	14	28.57 %	1,481	4,660	31.78 %
Riga	59	83	71.08 %	3	12	25.00 %	470	917	51.25 %
Rush	25	51	49.02 %	0	5	0.00 %	249	653	38.13 %
Sweden	46	130	35.38 %	2	11	18.18 %	414	1,611	25.70 %
Webster	246	540	45.56 %	3	28	10.71 %	2,455	7,432	33.03 %
Wheatland	27	77	35.06 %	1	7	14.29 %	184	800	23.00 %
TOTAL:	2,899	6,840	42.38 %	87	511	17.03 %	25,271	84,767	29.81 %
GRAND TOTAL:	3,405	7,811	43.59 %	162	926	17.49 %	31,555	104,875	30.09 %

2005 GENERAL ELECTION
VOTER TURNOUT BY AGE

LT/LD SUMMARY
Part 1 of 2

LEGISLATIVE DISTRICT OR TOWN	NDOB			18-24			25-34			35-44		
	VOTED	REGISTERED	TURNOUT	VOTED	REGISTERED	TURNOUT	VOTED	REGISTERED	TURNOUT	VOTED	REGISTERED	TURNOUT
Leg. Dist. 06	58	74	78.38 %	50	209	23.92 %	176	542	32.47 %	297	610	48.69 %
Leg. Dist. 07	29	40	72.50 %	19	117	16.24 %	42	176	23.86 %	92	227	40.53 %
Leg. Dist. 21	237	339	69.91 %	239	1,275	18.75 %	818	3,013	27.15 %	1,039	2,718	38.23 %
Leg. Dist. 22	52	90	57.78 %	142	1,322	10.74 %	274	1,898	14.44 %	426	1,924	22.14 %
Leg. Dist. 23	186	255	72.94 %	307	1,222	25.12 %	1,132	3,577	31.65 %	1,159	2,402	48.25 %
Leg. Dist. 24	106	147	72.11 %	116	533	21.76 %	573	1,621	35.35 %	677	1,318	51.37 %
Leg. Dist. 25	72	108	66.67 %	187	1,319	14.18 %	399	1,723	23.16 %	565	1,898	29.77 %
Leg. Dist. 26	99	132	75.00 %	122	754	16.18 %	352	1,448	24.31 %	572	1,495	38.26 %
Leg. Dist. 27	140	197	71.07 %	257	1,451	17.71 %	547	2,396	22.83 %	989	2,714	36.44 %
Leg. Dist. 28	114	174	65.52 %	126	1,041	12.10 %	322	1,739	18.52 %	579	1,895	30.55 %
Leg. Dist. 29	155	259	59.85 %	139	1,181	11.77 %	358	1,888	18.96 %	633	2,275	27.82 %
TOTAL:	1,248	1,815	68.76 %	1,704	10,424	16.35 %	4,993	20,021	24.94 %	7,028	19,476	36.09 %
Brighton	365	499	73.15 %	219	1,811	12.09 %	711	3,160	22.50 %	1,489	3,603	41.33 %
Chili	304	449	67.71 %	151	1,748	8.64 %	462	2,743	16.84 %	1,007	3,542	28.43 %
Clarkson	2	5	40.00 %	36	367	9.81 %	103	468	22.01 %	341	907	37.60 %
East Rochester	108	149	72.48 %	58	346	16.76 %	155	621	24.96 %	298	715	41.68 %
Gates	127	195	65.13 %	145	1,422	10.20 %	449	2,539	17.68 %	996	3,228	30.86 %
Greece	815	1,405	58.01 %	453	5,896	7.68 %	1,088	8,172	13.31 %	2,529	10,703	23.63 %
Hamlin	22	30	73.33 %	72	546	13.19 %	143	724	19.75 %	388	1,096	35.40 %
Henrietta	69	114	60.53 %	163	1,830	8.91 %	514	3,234	15.89 %	1,021	4,092	24.95 %
Irondequoit	664	1,032	64.34 %	349	2,612	13.36 %	996	4,395	22.66 %	2,303	6,012	38.31 %
Mendon	15	20	75.00 %	101	605	16.69 %	149	561	26.56 %	765	1,353	56.54 %
Ogden	112	159	70.44 %	106	1,125	9.42 %	261	1,701	15.34 %	810	2,552	31.74 %
Parma	23	40	57.50 %	88	1,056	8.33 %	140	1,213	11.54 %	490	1,947	25.17 %
Penfield	279	418	66.75 %	178	1,973	9.02 %	481	2,632	18.28 %	1,576	4,624	34.08 %
Perinton	59	108	54.63 %	206	2,626	7.84 %	617	3,877	15.91 %	1,729	6,351	27.22 %
Pittsford	141	198	71.21 %	112	1,546	7.24 %	285	1,715	16.62 %	1,152	3,382	34.06 %
Riga	18	25	72.00 %	95	359	26.46 %	159	457	34.79 %	446	769	58.00 %
Rush	42	53	79.25 %	19	187	10.16 %	59	251	23.51 %	226	455	49.67 %
Sweden	37	53	69.81 %	71	881	8.06 %	124	923	13.43 %	359	1,172	30.63 %
Webster	263	381	69.03 %	214	2,130	10.05 %	657	3,407	19.28 %	1,838	5,591	32.87 %
Wheatland	12	23	52.17 %	29	320	9.06 %	60	428	14.02 %	165	653	25.27 %
TOTAL:	3,477	5,356	64.92 %	2,865	29,386	9.75 %	7,613	43,221	17.61 %	19,928	62,747	31.76 %
GRAND TOTAL:	4,725	7,171	65.89 %	4,569	39,810	11.48 %	12,606	63,242	19.93 %	26,956	82,223	32.78 %

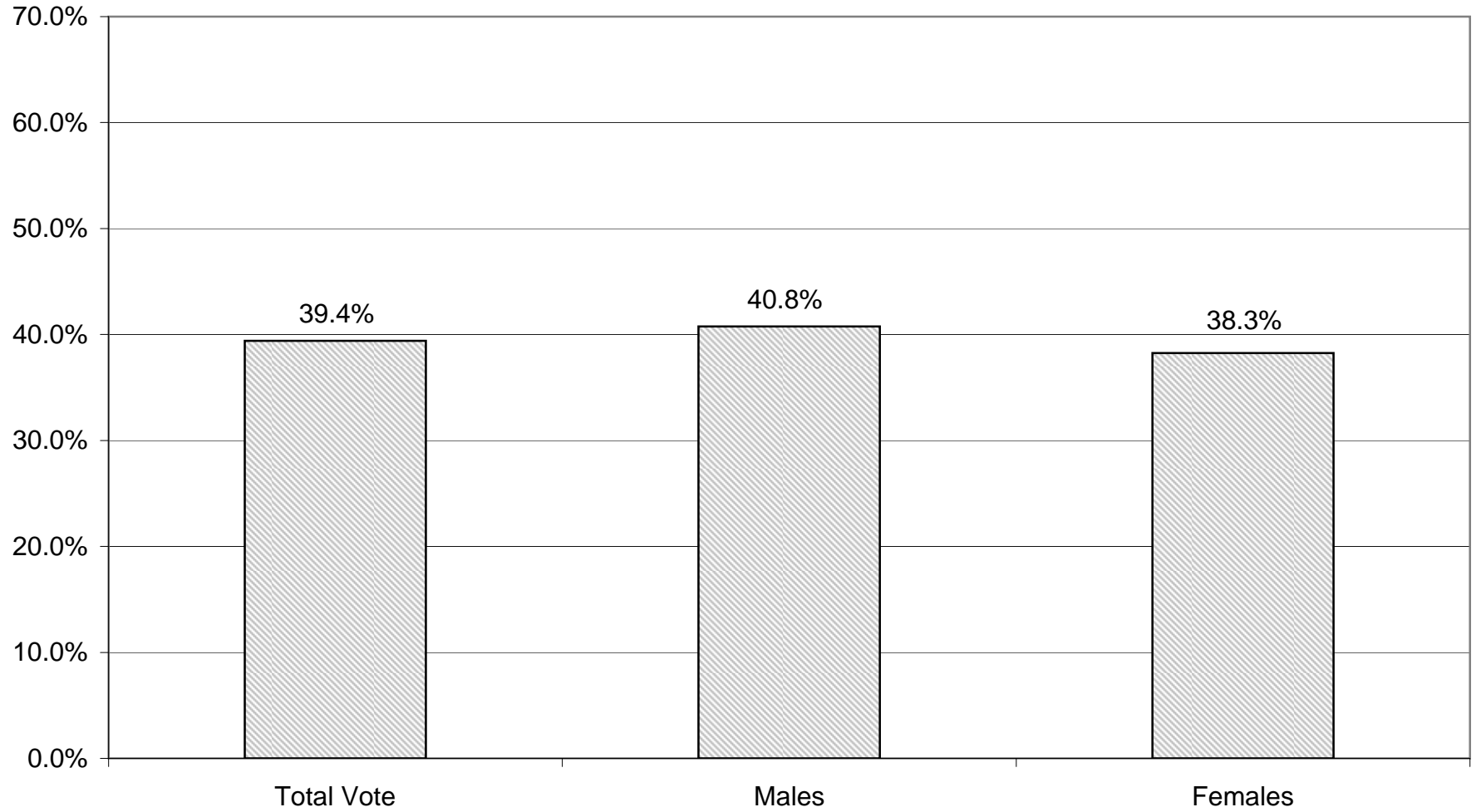
2005 GENERAL ELECTION
VOTER TURNOUT BY AGE

LT/LD SUMMARY
Part 2 of 2

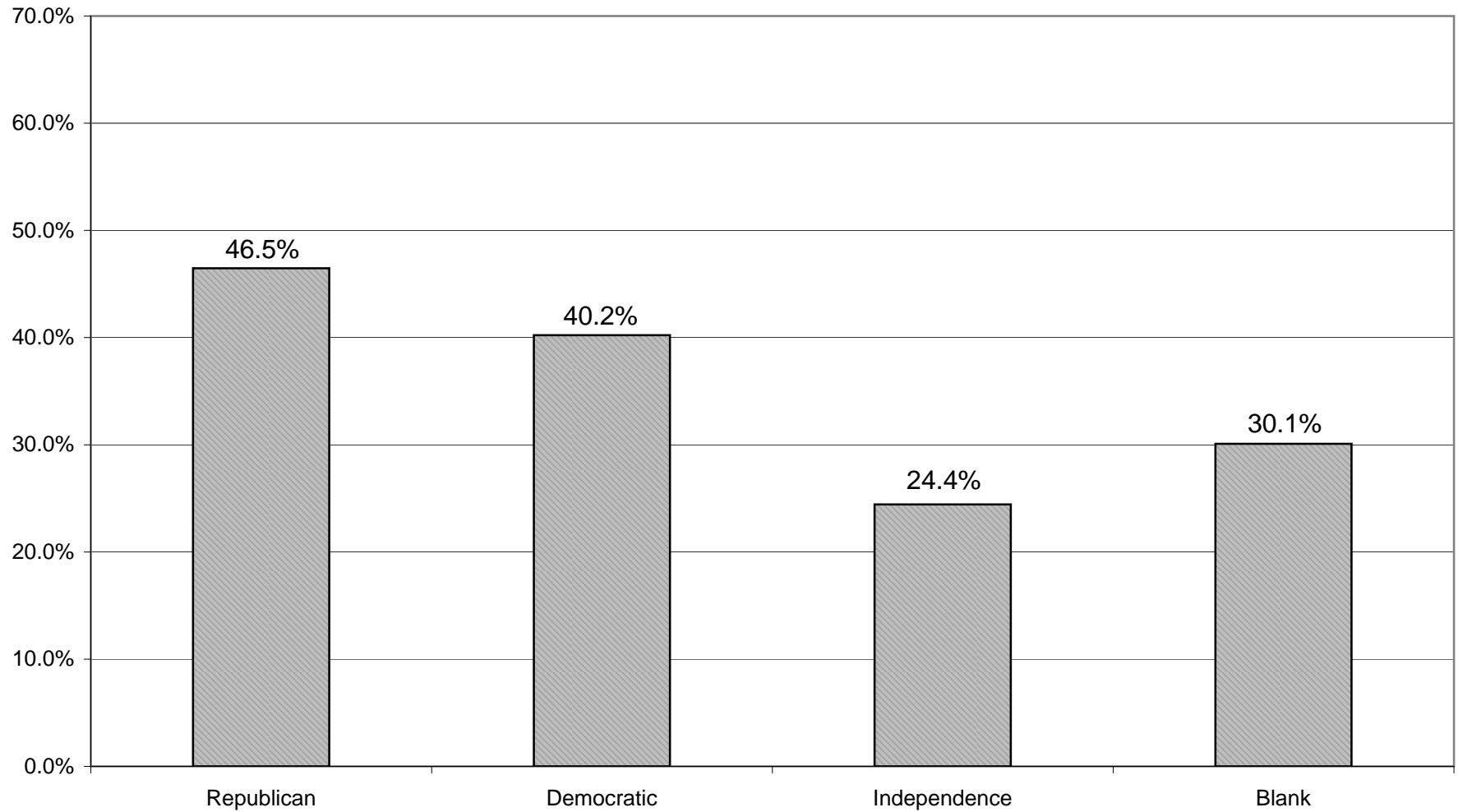
LEGISLATIVE
DISTRICT

OR TOWN	45-54			55-64			65+		
	VOTED	REGISTERED	TURNOUT	VOTED	REGISTERED	TURNOUT	VOTED	REGISTERED	TURNOUT
Leg. Dist. 06	390	636	61.32 %	303	457	66.30 %	363	563	64.48 %
Leg. Dist. 07	223	345	64.64 %	168	273	61.54 %	243	356	68.26 %
Leg. Dist. 21	1,275	2,460	51.83 %	935	1,648	56.74 %	871	1,547	56.30 %
Leg. Dist. 22	630	1,860	33.87 %	515	1,255	41.04 %	464	1,058	43.86 %
Leg. Dist. 23	1,347	2,037	66.13 %	1,231	1,777	69.27 %	817	1,260	64.84 %
Leg. Dist. 24	875	1,379	63.45 %	650	1,030	63.11 %	706	1,177	59.98 %
Leg. Dist. 25	777	1,753	44.32 %	724	1,310	55.27 %	799	1,563	51.12 %
Leg. Dist. 26	733	1,402	52.28 %	525	896	58.59 %	493	812	60.71 %
Leg. Dist. 27	1,368	2,653	51.56 %	1,119	1,945	57.53 %	818	1,560	52.44 %
Leg. Dist. 28	854	1,894	45.09 %	629	1,266	49.68 %	632	1,186	53.29 %
Leg. Dist. 29	860	2,001	42.98 %	836	1,632	51.23 %	890	1,655	53.78 %
TOTAL:	9,332	18,420	50.66 %	7,635	13,489	56.60 %	7,096	12,737	55.71 %
Brighton	2,355	4,286	54.95 %	2,150	3,548	60.60 %	3,201	5,074	63.09 %
Chili	1,617	3,887	41.60 %	1,471	2,906	50.62 %	1,730	3,006	57.55 %
Clarkson	398	878	45.33 %	317	540	58.70 %	344	606	56.77 %
East Rochester	377	762	49.48 %	269	520	51.73 %	382	629	60.73 %
Gates	1,430	3,240	44.14 %	1,546	2,831	54.61 %	2,555	4,267	59.88 %
Greece	4,538	13,016	34.86 %	4,274	9,586	44.59 %	6,115	12,066	50.68 %
Hamlin	622	1,318	47.19 %	494	868	56.91 %	390	658	59.27 %
Henrietta	1,512	4,182	36.15 %	1,456	3,223	45.18 %	1,958	3,730	52.49 %
Irondequoit	3,548	6,970	50.90 %	3,120	5,344	58.38 %	4,938	8,213	60.12 %
Mendon	1,011	1,588	63.66 %	733	1,105	66.33 %	575	891	64.53 %
Ogden	1,237	2,967	41.69 %	921	1,830	50.33 %	1,001	1,768	56.62 %
Parma	722	2,302	31.36 %	765	1,626	47.05 %	702	1,568	44.77 %
Penfield	2,315	5,583	41.47 %	2,056	4,037	50.93 %	2,561	4,675	54.78 %
Perinton	2,793	7,237	38.59 %	2,886	5,996	48.13 %	3,407	6,036	56.44 %
Pittsford	1,892	4,310	43.90 %	1,771	3,450	51.33 %	2,573	4,198	61.29 %
Riga	630	916	68.78 %	458	646	70.90 %	406	558	72.76 %
Rush	306	644	47.52 %	279	469	59.49 %	286	449	63.70 %
Sweden	623	1,486	41.92 %	589	1,057	55.72 %	560	1,024	54.69 %
Webster	2,659	5,907	45.01 %	2,465	4,537	54.33 %	3,049	5,074	60.09 %
Wheatland	267	692	38.58 %	239	530	45.09 %	287	615	46.67 %
TOTAL:	30,852	72,171	42.75 %	28,259	54,649	51.71 %	37,020	65,105	56.86 %
GRAND TOTAL:	40,184	90,591	44.36 %	35,894	68,138	52.68 %	44,116	77,842	56.67 %

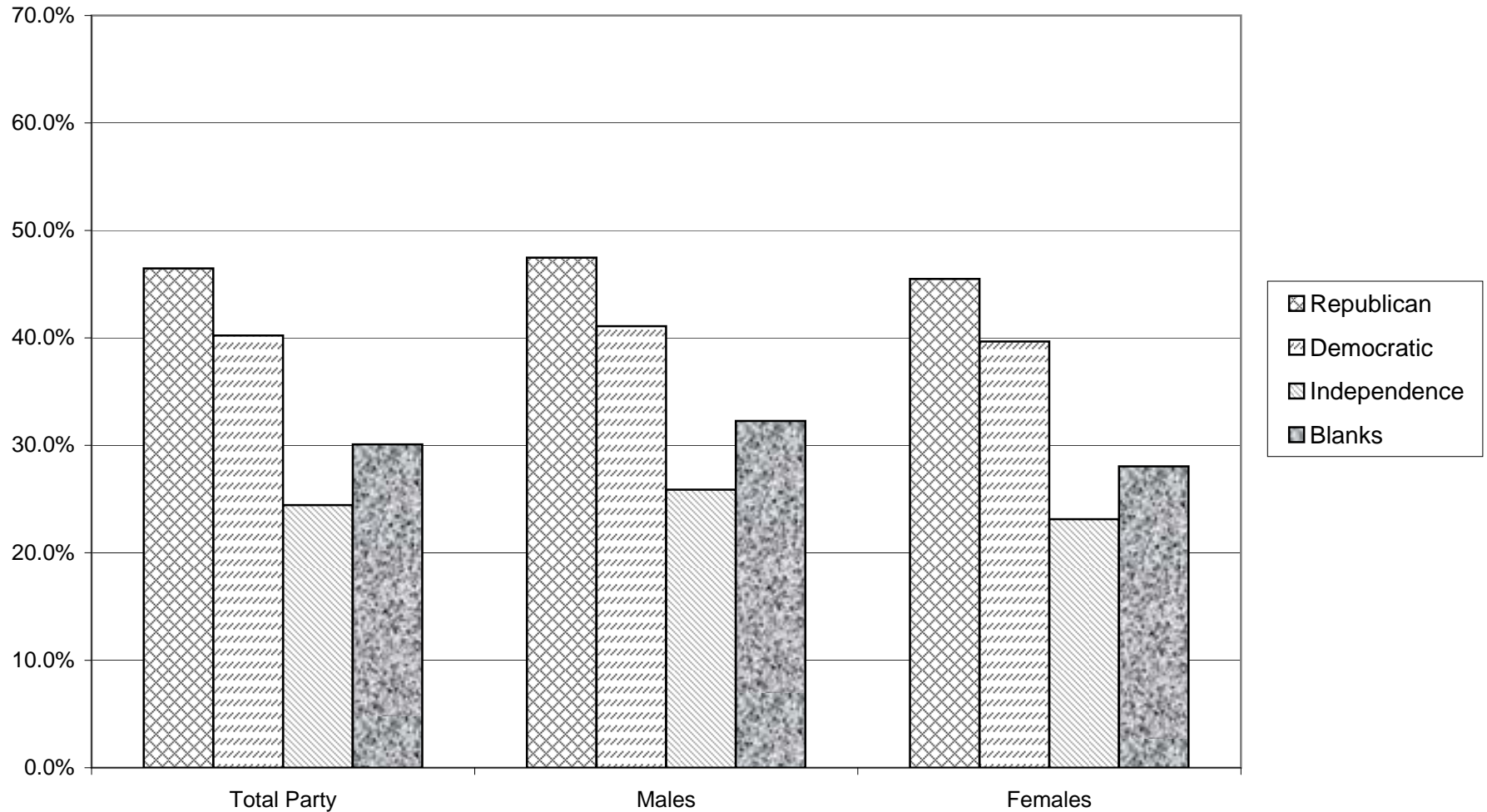
VOTER TURNOUT - TOTAL AND BY GENDER 2005 GENERAL ELECTION



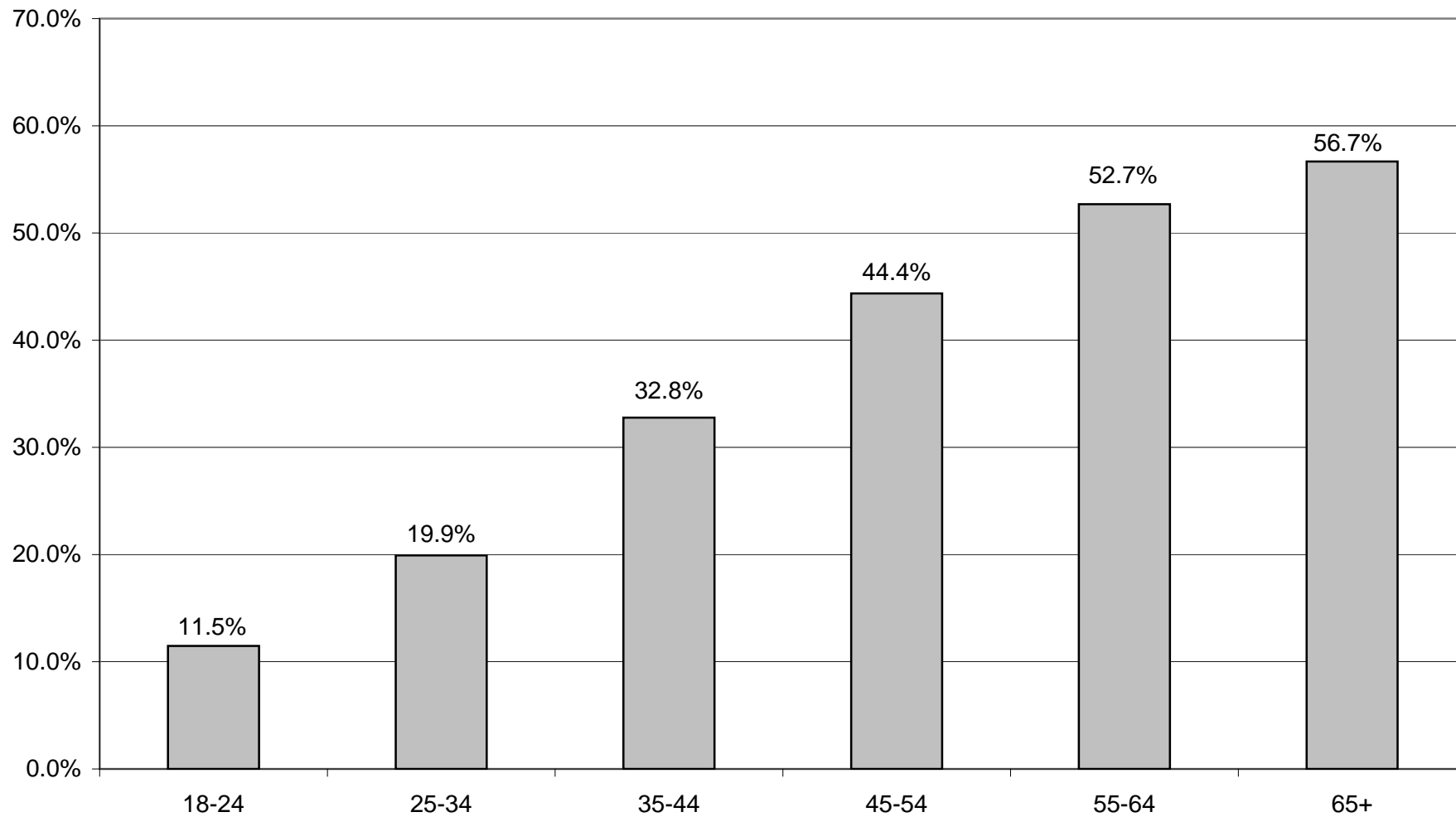
VOTER TURNOUT BY PARTY 2005 GENERAL ELECTION



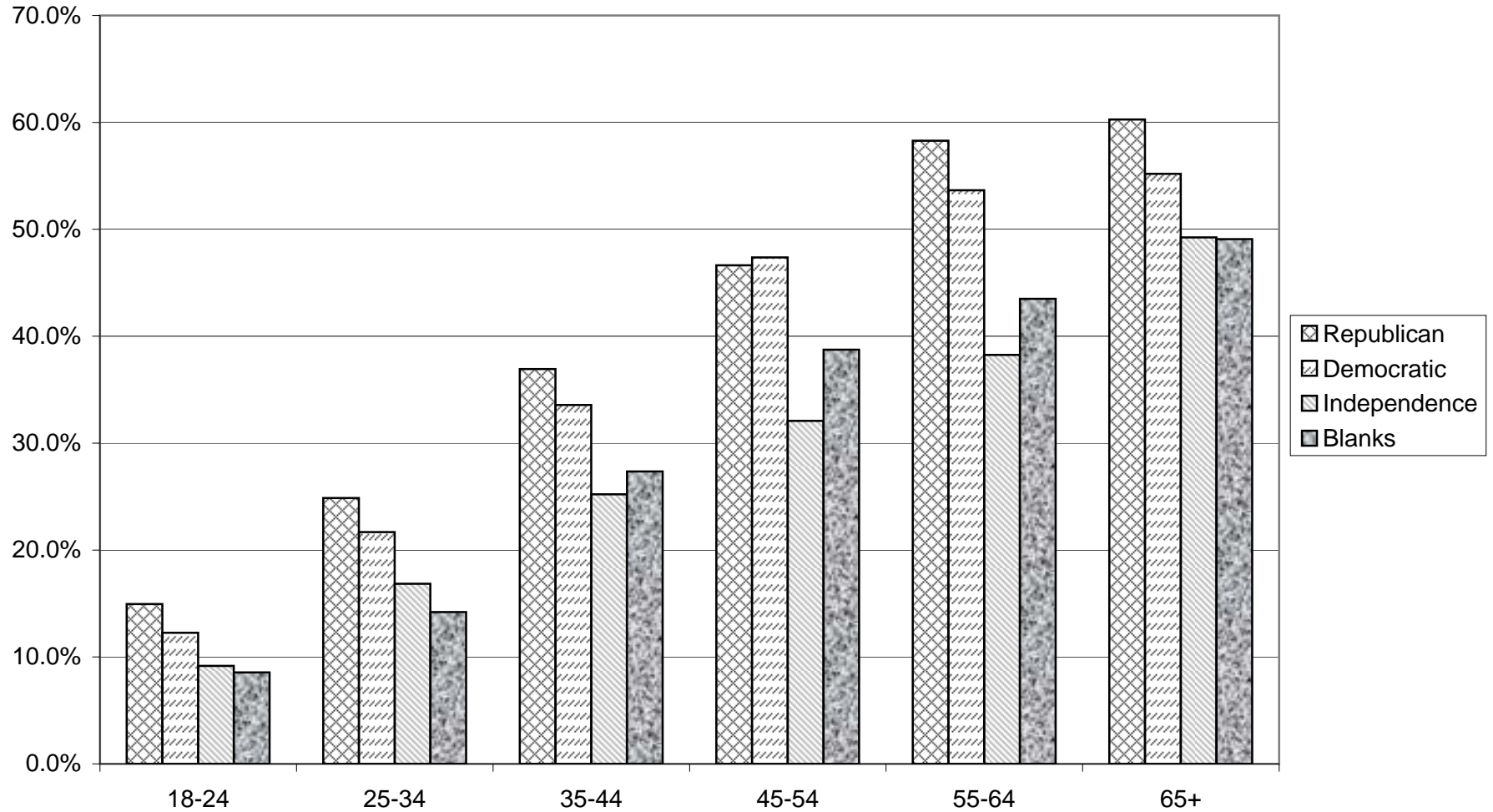
COMPARISON OF TOTAL AND GENDER TURNOUT 2005 GENERAL ELECTION



VOTER TURNOUT BY AGE GROUP 2005 GENERAL ELECTION



COMPARISON OF TURNOUT BY AGE GROUP 2005 GENERAL ELECTION



REPUBLICAN SUMMARY

2005 GENERAL ELECTION
REPUBLICAN TURNOUT BY GENDER

LT/LD SUMMARY

LEGISLATIVE DISTRICT OR TOWN CITY	TOTAL VOTERS			MALES			FEMALES		
	VOTED	REGISTERED	TURNOUT	VOTED	REGISTERED	TURNOUT	VOTED	REGISTERED	TURNOUT
Leg. Dist. 06	565	971	58.19 %	282	479	58.87 %	283	492	57.52 %
Leg. Dist. 07	300	495	60.61 %	140	241	58.09 %	160	254	62.99 %
Leg. Dist. 21	1,058	2,098	50.43 %	511	1,014	50.39 %	547	1,084	50.46 %
Leg. Dist. 22	221	684	32.31 %	98	343	28.57 %	123	341	36.07 %
Leg. Dist. 23	1,380	2,647	52.13 %	753	1,417	53.14 %	627	1,230	50.98 %
Leg. Dist. 24	780	1,440	54.17 %	390	710	54.93 %	390	730	53.42 %
Leg. Dist. 25	362	916	39.52 %	186	483	38.51 %	176	433	40.65 %
Leg. Dist. 26	830	1,612	51.49 %	397	793	50.06 %	433	819	52.87 %
Leg. Dist. 27	653	1,306	50.00 %	318	637	49.92 %	335	669	50.07 %
Leg. Dist. 28	757	1,673	45.25 %	396	829	47.77 %	361	844	42.77 %
Leg. Dist. 29	767	1,676	45.76 %	371	810	45.80 %	396	866	45.73 %
TOTAL:	7,673	15,518	49.45 %	3,842	7,756	49.54 %	3,831	7,762	49.36 %
TOWNS									
Brighton	3,511	6,761	51.93 %	1,713	3,269	52.40 %	1,798	3,492	51.49 %
Chili	3,350	7,400	45.27 %	1,722	3,717	46.33 %	1,628	3,683	44.20 %
Clarkson	832	1,692	49.17 %	443	877	50.51 %	389	815	47.73 %
East Rochester	702	1,372	51.17 %	340	647	52.55 %	362	725	49.93 %
Gates	3,350	6,546	51.18 %	1,627	3,198	50.88 %	1,723	3,348	51.46 %
Greece	9,832	24,495	40.14 %	5,004	12,153	41.18 %	4,828	12,342	39.12 %
Hamlin	1,275	2,421	52.66 %	664	1,251	53.08 %	611	1,170	52.22 %
Henrietta	3,047	7,537	40.43 %	1,613	3,838	42.03 %	1,434	3,699	38.77 %
Irondequoit	6,438	12,153	52.97 %	3,199	5,888	54.33 %	3,239	6,265	51.70 %
Mendon	1,667	2,837	58.76 %	890	1,495	59.53 %	777	1,342	57.90 %
Ogden	2,366	5,291	44.72 %	1,262	2,682	47.05 %	1,104	2,609	42.32 %
Parma	1,535	4,173	36.78 %	811	2,191	37.02 %	724	1,982	36.53 %
Penfield	4,484	9,675	46.35 %	2,366	4,927	48.02 %	2,118	4,748	44.61 %
Perinton	5,830	13,568	42.97 %	3,018	6,837	44.14 %	2,812	6,731	41.78 %
Pittsford	3,947	8,220	48.02 %	2,049	4,225	48.50 %	1,898	3,995	47.51 %
Riga	1,182	1,776	66.55 %	601	889	67.60 %	581	887	65.50 %
Rush	613	1,090	56.24 %	326	567	57.50 %	287	523	54.88 %
Sweden	1,188	2,706	43.90 %	599	1,352	44.30 %	589	1,354	43.50 %
Webster	4,968	10,444	47.57 %	2,617	5,277	49.59 %	2,351	5,167	45.50 %
Wheatland	534	1,341	39.82 %	269	649	41.45 %	265	692	38.29 %
TOTAL:	60,651	131,498	46.12 %	31,133	65,929	47.22 %	29,518	65,569	45.02 %
GRAND TOTAL:	68,324	147,016	46.47 %	34,975	73,685	47.47 %	33,349	73,331	45.48 %

2005 GENERAL ELECTION
REPUBLICAN TURNOUT BY AGE

LT/LD SUMMARY
Part 1 of 2

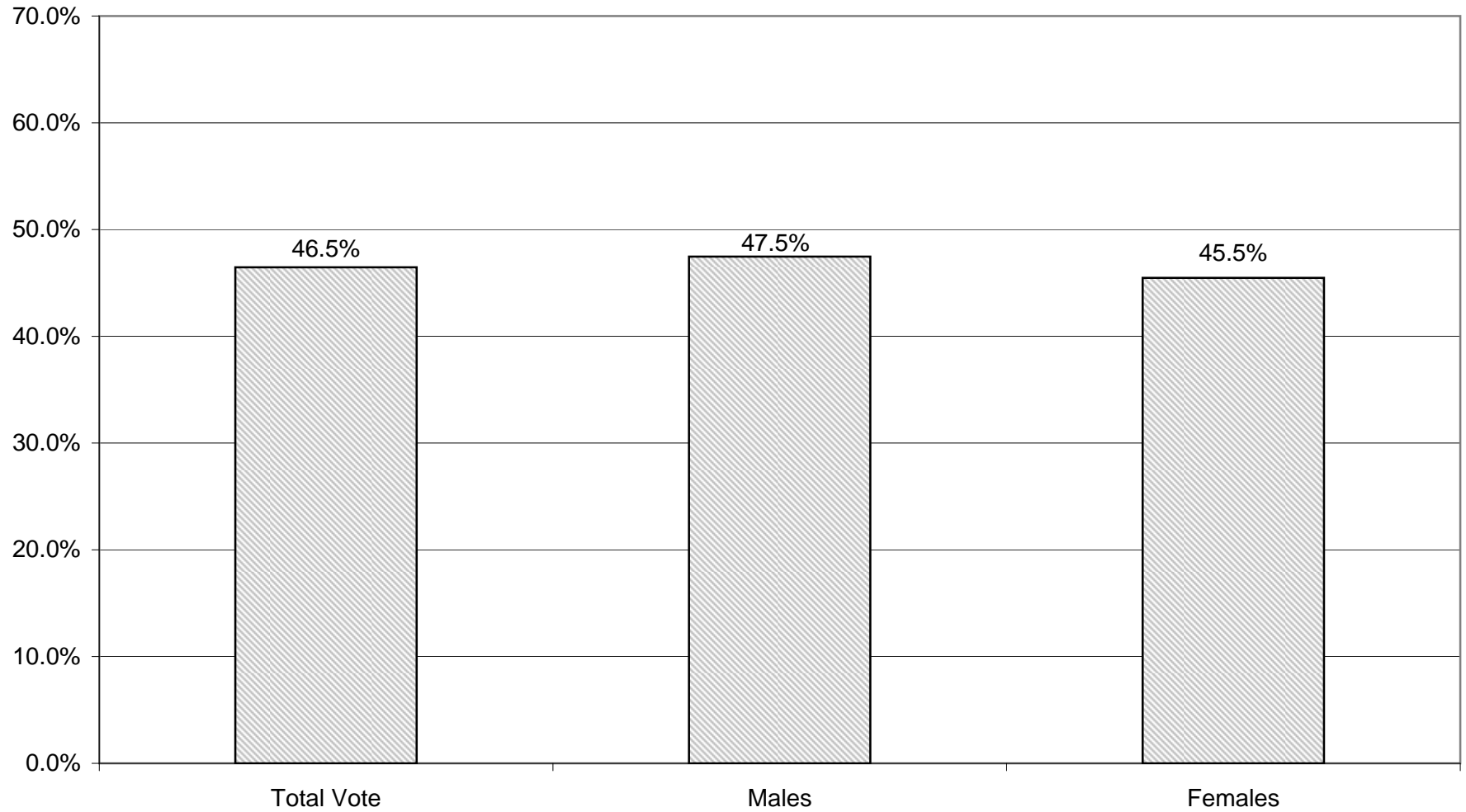
LEGISLATIVE DISTRICT OR TOWN CITY	NDOB			18-24			25-34			35-44		
	VOTED	REGISTERED	TURNOUT	VOTED	REGISTERED	TURNOUT	VOTED	REGISTERED	TURNOUT	VOTED	REGISTERED	TURNOUT
Leg. Dist. 06	35	46	76.09 %	13	37	35.14 %	56	139	40.29 %	86	181	47.51 %
Leg. Dist. 07	23	29	79.31 %	2	22	9.09 %	15	43	34.88 %	30	60	50.00 %
Leg. Dist. 21	130	196	66.33 %	27	113	23.89 %	124	382	32.46 %	174	386	45.08 %
Leg. Dist. 22	16	28	57.14 %	7	73	9.59 %	19	103	18.45 %	38	135	28.15 %
Leg. Dist. 23	94	140	67.14 %	50	168	29.76 %	240	663	36.20 %	241	520	46.35 %
Leg. Dist. 24	55	74	74.32 %	13	65	20.00 %	102	252	40.48 %	109	202	53.96 %
Leg. Dist. 25	18	30	60.00 %	12	88	13.64 %	28	133	21.05 %	40	158	25.32 %
Leg. Dist. 26	67	91	73.63 %	28	104	26.92 %	77	238	32.35 %	141	337	41.84 %
Leg. Dist. 27	58	86	67.44 %	35	108	32.41 %	53	196	27.04 %	93	223	41.70 %
Leg. Dist. 28	61	89	68.54 %	15	109	13.76 %	57	239	23.85 %	112	299	37.46 %
Leg. Dist. 29	67	123	54.47 %	19	94	20.21 %	56	194	28.87 %	109	316	34.49 %
TOTAL:	624	932	66.95 %	221	981	22.53 %	827	2,582	32.03 %	1,173	2,817	41.64 %
TOWNS												
Brighton	254	356	71.35 %	69	323	21.36 %	207	784	26.40 %	400	1,012	39.53 %
Chili	205	308	66.56 %	66	494	13.36 %	223	872	25.57 %	505	1,459	34.61 %
Clarkson	0	2	0.00 %	14	125	11.20 %	44	162	27.16 %	178	407	43.73 %
East Rochester	73	93	78.49 %	20	73	27.40 %	48	170	28.24 %	124	271	45.76 %
Gates	78	120	65.00 %	54	339	15.93 %	171	686	24.93 %	413	1,081	38.21 %
Greece	558	970	57.53 %	166	1,587	10.46 %	491	2,454	20.01 %	1,175	4,140	28.38 %
Hamlin	18	23	78.26 %	40	194	20.62 %	70	244	28.69 %	224	490	45.71 %
Henrietta	39	71	54.93 %	55	455	12.09 %	208	976	21.31 %	475	1,483	32.03 %
Irondequoit	422	662	63.75 %	121	630	19.21 %	318	1,120	28.39 %	838	1,946	43.06 %
Mendon	9	14	64.29 %	43	225	19.11 %	54	202	26.73 %	386	631	61.17 %
Ogden	73	107	68.22 %	57	360	15.83 %	137	612	22.39 %	430	1,144	37.59 %
Parma	16	28	57.14 %	40	319	12.54 %	63	387	16.28 %	236	785	30.06 %
Penfield	198	284	69.72 %	72	547	13.16 %	213	834	25.54 %	747	1,984	37.65 %
Perinton	40	70	57.14 %	80	670	11.94 %	257	1,244	20.66 %	884	2,793	31.65 %
Pittsford	109	149	73.15 %	40	432	9.26 %	122	578	21.11 %	526	1,467	35.86 %
Riga	12	18	66.67 %	55	138	39.86 %	69	160	43.13 %	227	372	61.02 %
Rush	35	41	85.37 %	7	53	13.21 %	29	91	31.87 %	101	184	54.89 %
Sweden	27	39	69.23 %	27	248	10.89 %	59	299	19.73 %	186	494	37.65 %
Webster	151	212	71.23 %	72	586	12.29 %	261	1,103	23.66 %	818	2,201	37.16 %
Wheatland	8	14	57.14 %	10	110	9.09 %	34	141	24.11 %	77	247	31.17 %
TOTAL:	2,325	3,581	64.93 %	1,108	7,908	14.01 %	3,078	13,119	23.46 %	8,950	24,591	36.40 %
GRAND TOTAL:	2,949	4,513	65.34 %	1,329	8,889	14.95 %	3,905	15,701	24.87 %	10,123	27,408	36.93 %

2005 GENERAL ELECTION
REPUBLICAN TURNOUT BY AGE

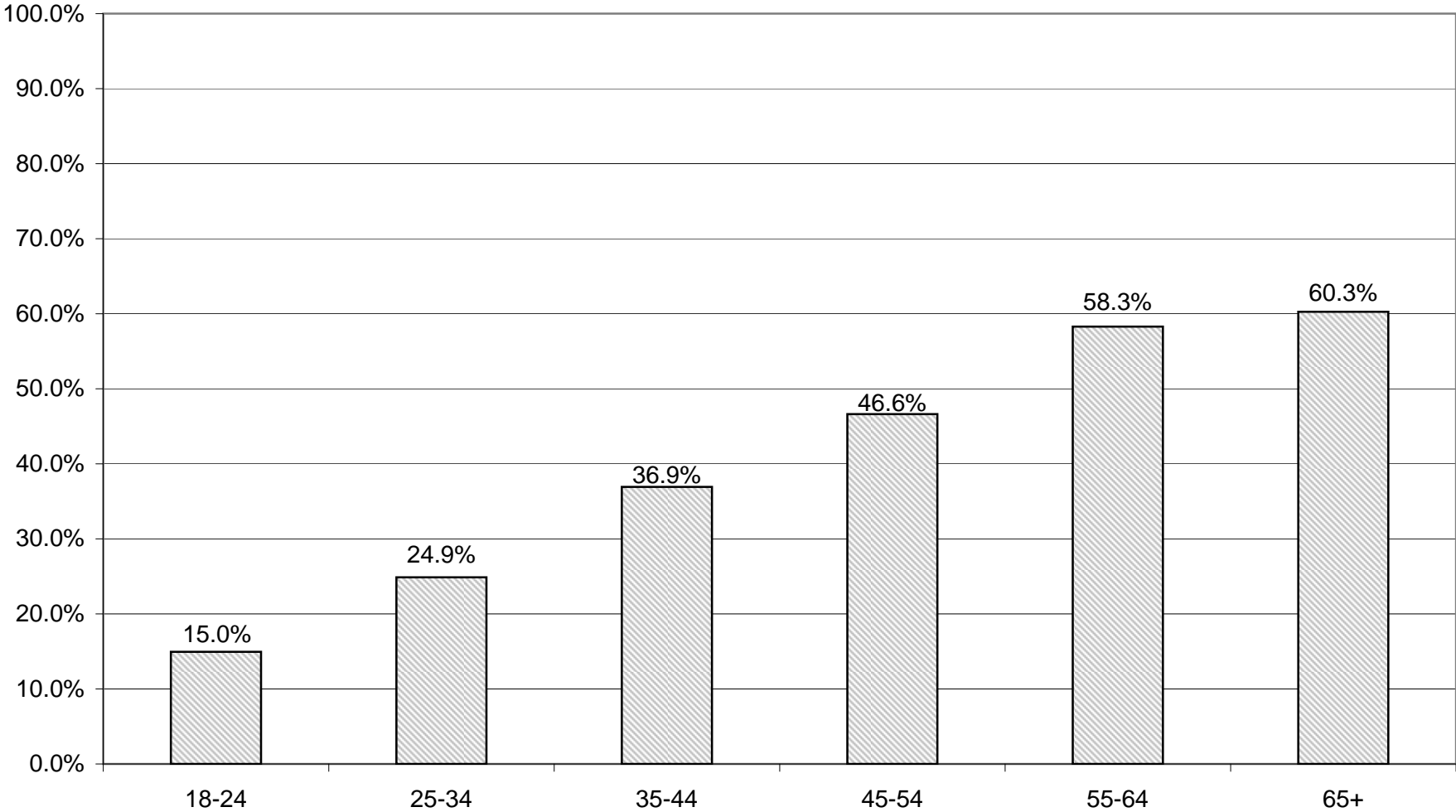
LT/LD SUMMARY
Part 2 of 2

LEGISLATIVE DISTRICT OR TOWN CITY	45-54			55-64			65+		
	VOTED	REGISTERED	TURNOUT	VOTED	REGISTERED	TURNOUT	VOTED	REGISTERED	TURNOUT
Leg. Dist. 06	116	162	71.60 %	106	158	67.09 %	153	248	61.69 %
Leg. Dist. 07	59	99	59.60 %	54	80	67.50 %	117	162	72.22 %
Leg. Dist. 21	183	321	57.01 %	171	271	63.10 %	249	429	58.04 %
Leg. Dist. 22	48	136	35.29 %	40	92	43.48 %	53	117	45.30 %
Leg. Dist. 23	269	414	64.98 %	242	352	68.75 %	244	390	62.56 %
Leg. Dist. 24	148	253	58.50 %	119	205	58.05 %	234	389	60.15 %
Leg. Dist. 25	76	154	49.35 %	63	116	54.31 %	125	237	52.74 %
Leg. Dist. 26	188	324	58.02 %	143	234	61.11 %	186	284	65.49 %
Leg. Dist. 27	147	257	57.20 %	118	185	63.78 %	149	251	59.36 %
Leg. Dist. 28	180	352	51.14 %	137	237	57.81 %	195	348	56.03 %
Leg. Dist. 29	137	295	46.44 %	141	255	55.29 %	238	399	59.65 %
TOTAL:	1,551	2,767	56.05 %	1,334	2,185	61.05 %	1,943	3,254	59.71 %
TOWNS									
Brighton	585	1,122	52.14 %	645	1,027	62.80 %	1,351	2,137	63.22 %
Chili	699	1,485	47.07 %	673	1,160	58.02 %	979	1,622	60.36 %
Clarkson	203	380	53.42 %	172	257	66.93 %	221	359	61.56 %
East Rochester	138	275	50.18 %	105	187	56.15 %	194	303	64.03 %
Gates	580	1,160	50.00 %	708	1,108	63.90 %	1,346	2,052	65.59 %
Greece	1,844	4,803	38.39 %	1,963	3,820	51.39 %	3,635	6,721	54.08 %
Hamlin	347	617	56.24 %	303	442	68.55 %	273	411	66.42 %
Henrietta	615	1,527	40.28 %	626	1,207	51.86 %	1,029	1,818	56.60 %
Irondequoit	1,159	2,159	53.68 %	1,166	1,809	64.46 %	2,414	3,827	63.08 %
Mendon	443	693	63.92 %	356	517	68.86 %	376	555	67.75 %
Ogden	585	1,248	46.88 %	469	811	57.83 %	615	1,009	60.95 %
Parma	330	946	34.88 %	388	747	51.94 %	462	961	48.07 %
Penfield	925	2,112	43.80 %	898	1,529	58.73 %	1,431	2,385	60.00 %
Perinton	1,223	2,985	40.97 %	1,330	2,470	53.85 %	2,016	3,336	60.43 %
Pittsford	792	1,782	44.44 %	829	1,429	58.01 %	1,529	2,383	64.16 %
Riga	301	412	73.06 %	258	339	76.11 %	260	337	77.15 %
Rush	125	251	49.80 %	131	189	69.31 %	185	281	65.84 %
Sweden	275	609	45.16 %	277	452	61.28 %	337	565	59.65 %
Webster	1,041	2,156	48.28 %	1,022	1,715	59.59 %	1,603	2,471	64.87 %
Wheatland	116	272	42.65 %	114	224	50.89 %	175	333	52.55 %
TOTAL:	12,326	26,994	45.66 %	12,433	21,439	57.99 %	20,431	33,866	60.33 %
GRAND TOTAL:	13,877	29,761	46.63 %	13,767	23,624	58.28 %	22,374	37,120	60.27 %

REPUBLICAN TURNOUT - TOTAL AND GENDER 2005 GENERAL ELECTION



REPUBLICAN TURNOUT BY AGE GROUP 2005 GENERAL ELECTION



DEMOCRATIC SUMMARY

2005 GENERAL ELECTION
DEMOCRATIC TURNOUT BY GENDER

LT/LD SUMMARY

LEGISLATIVE DISTRICT OR TOWN CITY	TOTAL VOTERS			MALES			FEMALES		
	VOTED	REGISTERED	TURNOUT	VOTED	REGISTERED	TURNOUT	VOTED	REGISTERED	TURNOUT
Leg. Dist. 06	621	1,105	56.20 %	232	408	56.86 %	389	697	55.81 %
Leg. Dist. 07	317	585	54.19 %	119	232	51.29 %	198	353	56.09 %
Leg. Dist. 21	3,223	7,509	42.92 %	1,251	2,925	42.77 %	1,972	4,584	43.02 %
Leg. Dist. 22	2,022	6,858	29.48 %	710	2,682	26.47 %	1,312	4,176	31.42 %
Leg. Dist. 23	3,201	5,992	53.42 %	1,419	2,577	55.06 %	1,782	3,415	52.18 %
Leg. Dist. 24	2,033	3,593	56.58 %	837	1,477	56.67 %	1,196	2,116	56.52 %
Leg. Dist. 25	2,654	6,725	39.46 %	1,066	2,791	38.19 %	1,588	3,934	40.37 %
Leg. Dist. 26	1,399	3,282	42.63 %	540	1,276	42.32 %	859	2,006	42.82 %
Leg. Dist. 27	3,844	9,110	42.20 %	1,402	3,449	40.65 %	2,442	5,661	43.14 %
Leg. Dist. 28	1,861	5,057	36.80 %	722	1,946	37.10 %	1,139	3,111	36.61 %
Leg. Dist. 29	2,480	6,667	37.20 %	919	2,553	36.00 %	1,561	4,114	37.94 %
TOTAL:	23,655	56,483	41.88 %	9,217	22,316	41.30 %	14,438	34,167	42.26 %
TOWNS									
Brighton	4,672	9,012	51.84 %	1,805	3,470	52.02 %	2,867	5,542	51.73 %
Chili	1,855	5,330	34.80 %	755	2,091	36.11 %	1,100	3,239	33.96 %
Clarkson	369	949	38.88 %	158	374	42.25 %	211	575	36.70 %
East Rochester	491	1,113	44.12 %	196	421	46.56 %	295	692	42.63 %
Gates	2,362	5,942	39.75 %	933	2,321	40.20 %	1,429	3,621	39.46 %
Greece	5,295	17,044	31.07 %	2,138	6,553	32.63 %	3,157	10,491	30.09 %
Hamlin	412	1,202	34.28 %	172	496	34.68 %	240	706	33.99 %
Henrietta	2,176	6,711	32.42 %	941	2,671	35.23 %	1,235	4,040	30.57 %
Irondequoit	5,572	11,850	47.02 %	2,166	4,420	49.00 %	3,406	7,430	45.84 %
Mendon	811	1,541	52.63 %	325	598	54.35 %	486	943	51.54 %
Ogden	1,026	2,897	35.42 %	418	1,140	36.67 %	608	1,757	34.60 %
Parma	628	2,229	28.17 %	266	885	30.06 %	362	1,344	26.93 %
Penfield	2,674	6,656	40.17 %	1,072	2,563	41.83 %	1,602	4,093	39.14 %
Perinton	3,128	8,890	35.19 %	1,271	3,340	38.05 %	1,857	5,550	33.46 %
Pittsford	2,270	5,215	43.53 %	911	2,005	45.44 %	1,359	3,210	42.34 %
Riga	441	810	54.44 %	170	316	53.80 %	271	494	54.86 %
Rush	315	642	49.07 %	138	254	54.33 %	177	388	45.62 %
Sweden	665	1,899	35.02 %	295	739	39.92 %	370	1,160	31.90 %
Webster	3,219	7,652	42.07 %	1,309	2,960	44.22 %	1,910	4,692	40.71 %
Wheatland	294	924	31.82 %	131	386	33.94 %	163	538	30.30 %
TOTAL:	38,675	98,508	39.26 %	15,570	38,003	40.97 %	23,105	60,505	38.19 %
GRAND TOTAL:	62,330	154,991	40.22 %	24,787	60,319	41.09 %	37,543	94,672	39.66 %

2005 GENERAL ELECTION
DEMOCRATIC TURNOUT BY AGE

LT/LD SUMMARY
Part 1 of 2

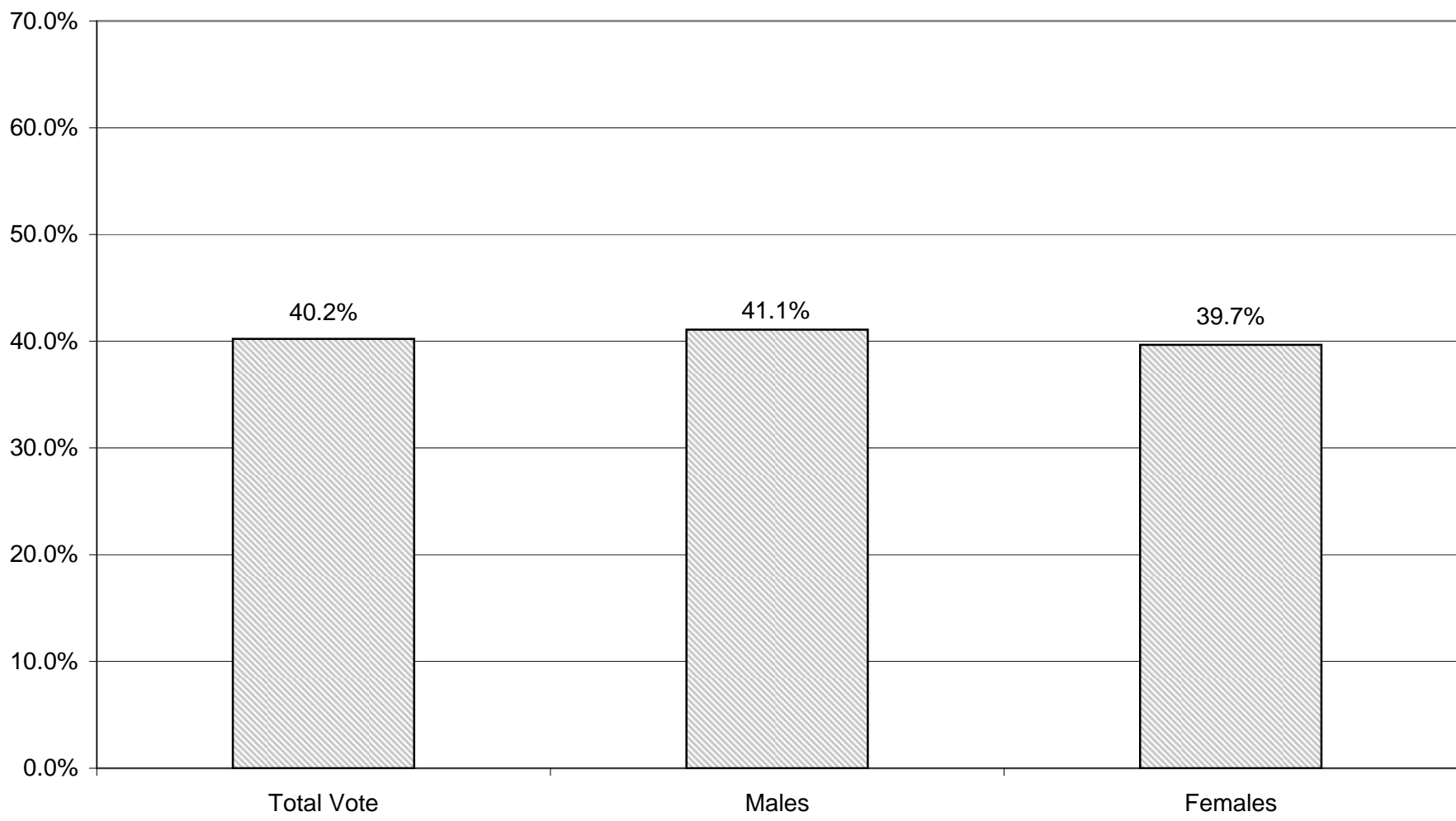
LEGISLATIVE DISTRICT OR TOWN CITY	NDOB			18-24			25-34			35-44		
	VOTED	REGISTERED	TURNOUT	VOTED	REGISTERED	TURNOUT	VOTED	REGISTERED	TURNOUT	VOTED	REGISTERED	TURNOUT
Leg. Dist. 06	19	24	79.17 %	18	73	24.66 %	63	182	34.62 %	123	221	55.66 %
Leg. Dist. 07	6	10	60.00 %	10	51	19.61 %	11	59	18.64 %	30	83	36.14 %
Leg. Dist. 21	97	131	74.05 %	141	757	18.63 %	449	1,591	28.22 %	640	1,618	39.56 %
Leg. Dist. 22	33	56	58.93 %	109	881	12.37 %	207	1,251	16.55 %	346	1,413	24.49 %
Leg. Dist. 23	74	92	80.43 %	157	580	27.07 %	528	1,558	33.89 %	577	1,102	52.36 %
Leg. Dist. 24	41	59	69.49 %	61	232	26.29 %	292	743	39.30 %	372	672	55.36 %
Leg. Dist. 25	51	72	70.83 %	137	799	17.15 %	267	1,074	24.86 %	430	1,342	32.04 %
Leg. Dist. 26	29	37	78.38 %	58	363	15.98 %	189	670	28.21 %	269	720	37.36 %
Leg. Dist. 27	71	96	73.96 %	156	978	15.95 %	387	1,546	25.03 %	761	1,955	38.93 %
Leg. Dist. 28	43	70	61.43 %	74	557	13.29 %	193	941	20.51 %	347	1,024	33.89 %
Leg. Dist. 29	79	120	65.83 %	103	715	14.41 %	222	1,097	20.24 %	403	1,424	28.30 %
TOTAL:	543	767	70.80 %	1,024	5,986	17.11 %	2,808	10,712	26.21 %	4,298	11,574	37.13 %
TOWNS												
Brighton	80	106	75.47 %	80	817	9.79 %	310	1,192	26.01 %	692	1,468	47.14 %
Chili	82	120	68.33 %	40	516	7.75 %	115	784	14.67 %	231	952	24.26 %
Clarkson	2	3	66.67 %	4	82	4.88 %	24	121	19.83 %	79	202	39.11 %
East Rochester	27	44	61.36 %	21	104	20.19 %	59	194	30.41 %	74	197	37.56 %
Gates	40	61	65.57 %	45	496	9.07 %	149	799	18.65 %	290	1,022	28.38 %
Greece	200	338	59.17 %	117	1,635	7.16 %	295	2,359	12.51 %	603	2,823	21.36 %
Hamlin	3	6	50.00 %	14	127	11.02 %	31	190	16.32 %	67	241	27.80 %
Henrietta	24	30	80.00 %	63	632	9.97 %	157	1,063	14.77 %	288	1,267	22.73 %
Irondequoit	174	275	63.27 %	93	835	11.14 %	366	1,440	25.42 %	782	2,048	38.18 %
Mendon	2	2	100.00 %	30	162	18.52 %	39	177	22.03 %	177	331	53.47 %
Ogden	29	38	76.32 %	19	264	7.20 %	55	411	13.38 %	163	534	30.52 %
Parma	5	10	50.00 %	17	240	7.08 %	26	261	9.96 %	102	456	22.37 %
Penfield	62	100	62.00 %	42	551	7.62 %	116	693	16.74 %	398	1,168	34.08 %
Perinton	14	25	56.00 %	61	828	7.37 %	185	1,153	16.05 %	413	1,600	25.81 %
Pittsford	21	32	65.63 %	43	508	8.46 %	85	457	18.60 %	335	911	36.77 %
Riga	5	6	83.33 %	15	74	20.27 %	35	118	29.66 %	79	144	54.86 %
Rush	7	12	58.33 %	9	59	15.25 %	16	63	25.40 %	62	119	52.10 %
Sweden	10	14	71.43 %	21	298	7.05 %	25	255	9.80 %	85	277	30.69 %
Webster	82	131	62.60 %	61	593	10.29 %	184	930	19.78 %	466	1,445	32.25 %
Wheatland	2	6	33.33 %	9	86	10.47 %	11	115	9.57 %	36	173	20.81 %
TOTAL:	871	1,359	64.09 %	804	8,907	9.03 %	2,283	12,775	17.87 %	5,422	17,378	31.20 %
GRAND TOTAL:	1,414	2,126	66.51 %	1,828	14,893	12.27 %	5,091	23,487	21.68 %	9,720	28,952	33.57 %

2005 GENERAL ELECTION
DEMOCRATIC TURNOUT BY AGE

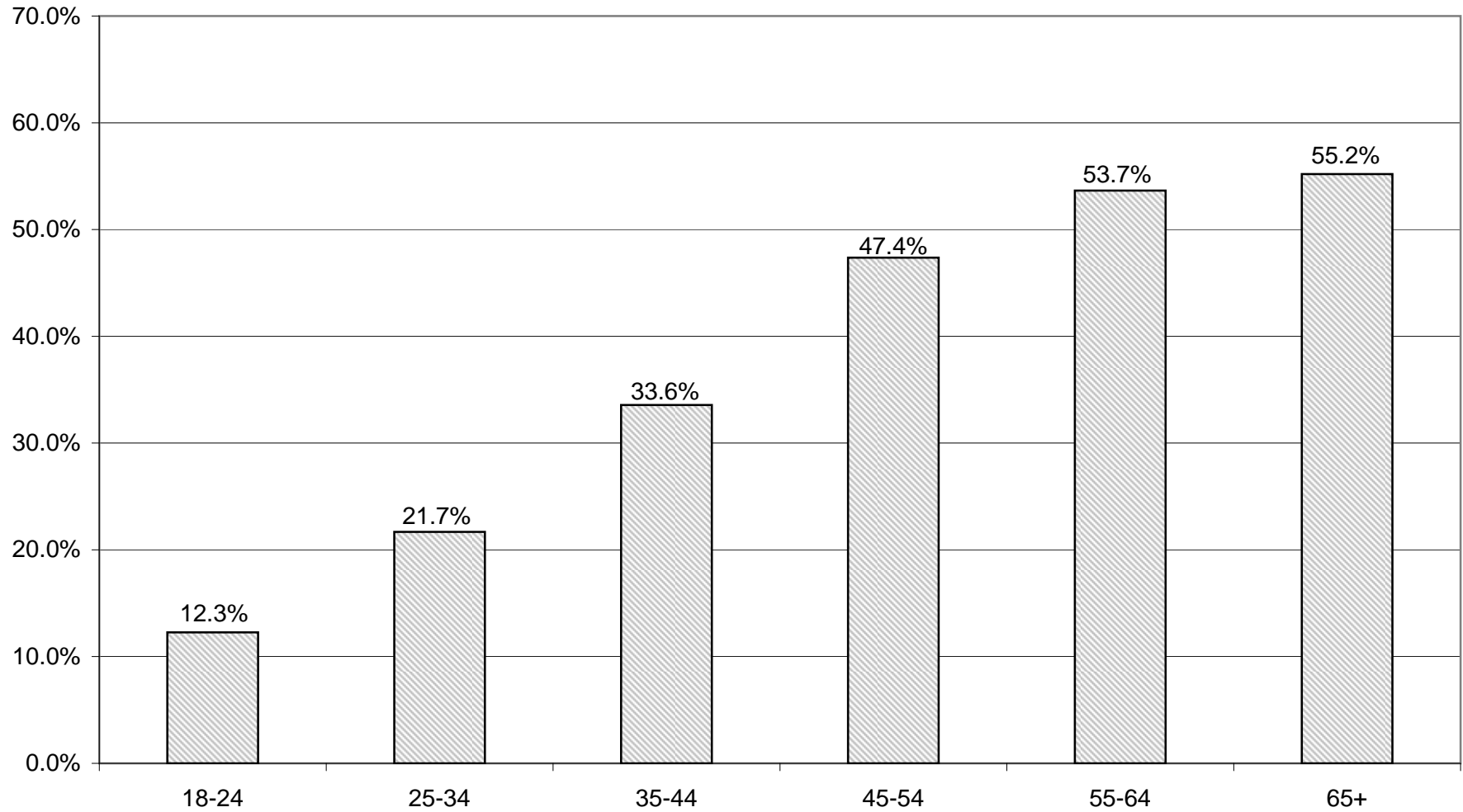
LT/LD SUMMARY
Part 2 of 2

LEGISLATIVE DISTRICT OR TOWN	45-54			55-64			65+		
	VOTED	REGISTERED	TURNOUT	VOTED	REGISTERED	TURNOUT	VOTED	REGISTERED	TURNOUT
CITY									
Leg. Dist. 06	134	233	57.51 %	122	176	69.32 %	142	196	72.45 %
Leg. Dist. 07	101	129	78.29 %	69	113	61.06 %	90	140	64.29 %
Leg. Dist. 21	818	1,516	53.96 %	576	1,023	56.30 %	502	873	57.50 %
Leg. Dist. 22	514	1,408	36.51 %	429	991	43.29 %	384	858	44.76 %
Leg. Dist. 23	734	1,071	68.53 %	718	981	73.19 %	413	608	67.93 %
Leg. Dist. 24	531	762	69.69 %	393	572	68.71 %	343	553	62.03 %
Leg. Dist. 25	582	1,286	45.26 %	569	999	56.96 %	618	1,153	53.60 %
Leg. Dist. 26	350	668	52.40 %	259	425	60.94 %	245	399	61.40 %
Leg. Dist. 27	1,012	1,935	52.30 %	856	1,451	58.99 %	601	1,149	52.31 %
Leg. Dist. 28	479	1,065	44.98 %	372	747	49.80 %	353	653	54.06 %
Leg. Dist. 29	564	1,232	45.78 %	550	1,050	52.38 %	559	1,029	54.32 %
TOTAL:	5,819	11,305	51.47 %	4,913	8,528	57.61 %	4,250	7,611	55.84 %
TOWNS									
Brighton	1,181	1,910	61.83 %	1,029	1,594	64.55 %	1,300	1,925	67.53 %
Chili	437	1,107	39.48 %	459	952	48.21 %	491	899	54.62 %
Clarkson	87	211	41.23 %	87	158	55.06 %	86	172	50.00 %
East Rochester	110	209	52.63 %	80	156	51.28 %	120	209	57.42 %
Gates	453	1,019	44.46 %	541	1,022	52.94 %	844	1,523	55.42 %
Greece	1,240	3,644	34.03 %	1,249	2,882	43.34 %	1,591	3,363	47.31 %
Hamlin	116	267	43.45 %	107	215	49.77 %	74	156	47.44 %
Henrietta	518	1,331	38.92 %	497	1,111	44.73 %	629	1,277	49.26 %
Irondequoit	1,295	2,405	53.85 %	1,122	1,938	57.89 %	1,740	2,909	59.81 %
Mendon	264	405	65.19 %	193	284	67.96 %	106	180	58.89 %
Ogden	288	705	40.85 %	233	477	48.85 %	239	468	51.07 %
Parma	152	512	29.69 %	174	389	44.73 %	152	361	42.11 %
Penfield	711	1,566	45.40 %	621	1,203	51.62 %	724	1,375	52.65 %
Perinton	795	1,986	40.03 %	832	1,757	47.35 %	828	1,541	53.73 %
Pittsford	652	1,291	50.50 %	541	1,038	52.12 %	593	978	60.63 %
Riga	130	203	64.04 %	95	139	68.35 %	82	126	65.08 %
Rush	92	168	54.76 %	67	123	54.47 %	62	98	63.27 %
Sweden	173	405	42.72 %	190	338	56.21 %	161	312	51.60 %
Webster	759	1,566	48.47 %	770	1,394	55.24 %	897	1,593	56.31 %
Wheatland	77	185	41.62 %	80	171	46.78 %	79	188	42.02 %
TOTAL:	9,530	21,095	45.18 %	8,967	17,341	51.71 %	10,798	19,653	54.94 %
GRAND TOTAL:	15,349	32,400	47.37 %	13,880	25,869	53.65 %	15,048	27,264	55.19 %

DEMOCRATIC TURNOUT - TOTAL AND GENDER 2005 GENERAL ELECTION



DEMOCRATIC TURNOUT BY AGE GROUP 2005 GENERAL ELECTION



INDEPENDENCE SUMMARY

2005 GENERAL ELECTION
INDEPENDENCE TURNOUT BY GENDER

LT/LD SUMMARY

LEGISLATIVE DISTRICT OR TOWN	TOTAL VOTERS			MALES			FEMALES		
	VOTED	REGISTERED	TURNOUT	VOTED	REGISTERED	TURNOUT	VOTED	REGISTERED	TURNOUT
CITY									
Leg. Dist. 06	45	109	41.28 %	25	50	50.00 %	20	59	33.90 %
Leg. Dist. 07	21	63	33.33 %	10	29	34.48 %	11	34	32.35 %
Leg. Dist. 21	126	453	27.81 %	58	204	28.43 %	68	249	27.31 %
Leg. Dist. 22	24	166	14.46 %	13	79	16.46 %	11	87	12.64 %
Leg. Dist. 23	182	554	32.85 %	97	268	36.19 %	85	286	29.72 %
Leg. Dist. 24	87	253	34.39 %	44	136	32.35 %	43	117	36.75 %
Leg. Dist. 25	65	230	28.26 %	30	119	25.21 %	35	111	31.53 %
Leg. Dist. 26	75	242	30.99 %	38	119	31.93 %	37	123	30.08 %
Leg. Dist. 27	89	302	29.47 %	41	170	24.12 %	48	132	36.36 %
Leg. Dist. 28	65	252	25.79 %	35	124	28.23 %	30	128	23.44 %
Leg. Dist. 29	64	263	24.33 %	36	125	28.80 %	28	138	20.29 %
TOTAL:	843	2,887	29.20 %	427	1,423	30.01 %	416	1,464	28.42 %
TOWNS									
Brighton	174	637	27.32 %	78	289	26.99 %	96	348	27.59 %
Chili	105	557	18.85 %	55	261	21.07 %	50	296	16.89 %
Clarkson	27	150	18.00 %	14	69	20.29 %	13	81	16.05 %
East Rochester	51	154	33.12 %	26	75	34.67 %	25	79	31.65 %
Gates	130	484	26.86 %	65	238	27.31 %	65	246	26.42 %
Greece	344	1,935	17.78 %	185	911	20.31 %	159	1,024	15.53 %
Hamlin	42	194	21.65 %	23	90	25.56 %	19	104	18.27 %
Henrietta	124	642	19.31 %	74	329	22.49 %	50	313	15.97 %
Irondequoit	316	1,117	28.29 %	158	521	30.33 %	158	596	26.51 %
Mendon	64	181	35.36 %	31	77	40.26 %	33	104	31.73 %
Ogden	71	353	20.11 %	38	172	22.09 %	33	181	18.23 %
Parma	64	306	20.92 %	31	146	21.23 %	33	160	20.63 %
Penfield	195	800	24.38 %	90	356	25.28 %	105	444	23.65 %
Perinton	207	1,021	20.27 %	104	474	21.94 %	103	547	18.83 %
Pittsford	124	499	24.85 %	48	208	23.08 %	76	291	26.12 %
Riga	57	132	43.18 %	19	50	38.00 %	38	82	46.34 %
Rush	15	67	22.39 %	8	30	26.67 %	7	37	18.92 %
Sweden	48	239	20.08 %	29	122	23.77 %	19	117	16.24 %
Webster	254	931	27.28 %	129	456	28.29 %	125	475	26.32 %
Wheatland	19	112	16.96 %	12	55	21.82 %	7	57	12.28 %
TOTAL:	2,431	10,511	23.13 %	1,217	4,929	24.69 %	1,214	5,582	21.75 %
GRAND TOTAL:	3,274	13,398	24.44 %	1,644	6,352	25.88 %	1,630	7,046	23.13 %

2005 GENERAL ELECTION
INDEPENDENCE TURNOUT BY AGE

LT/LD SUMMARY
Part 1 of 2

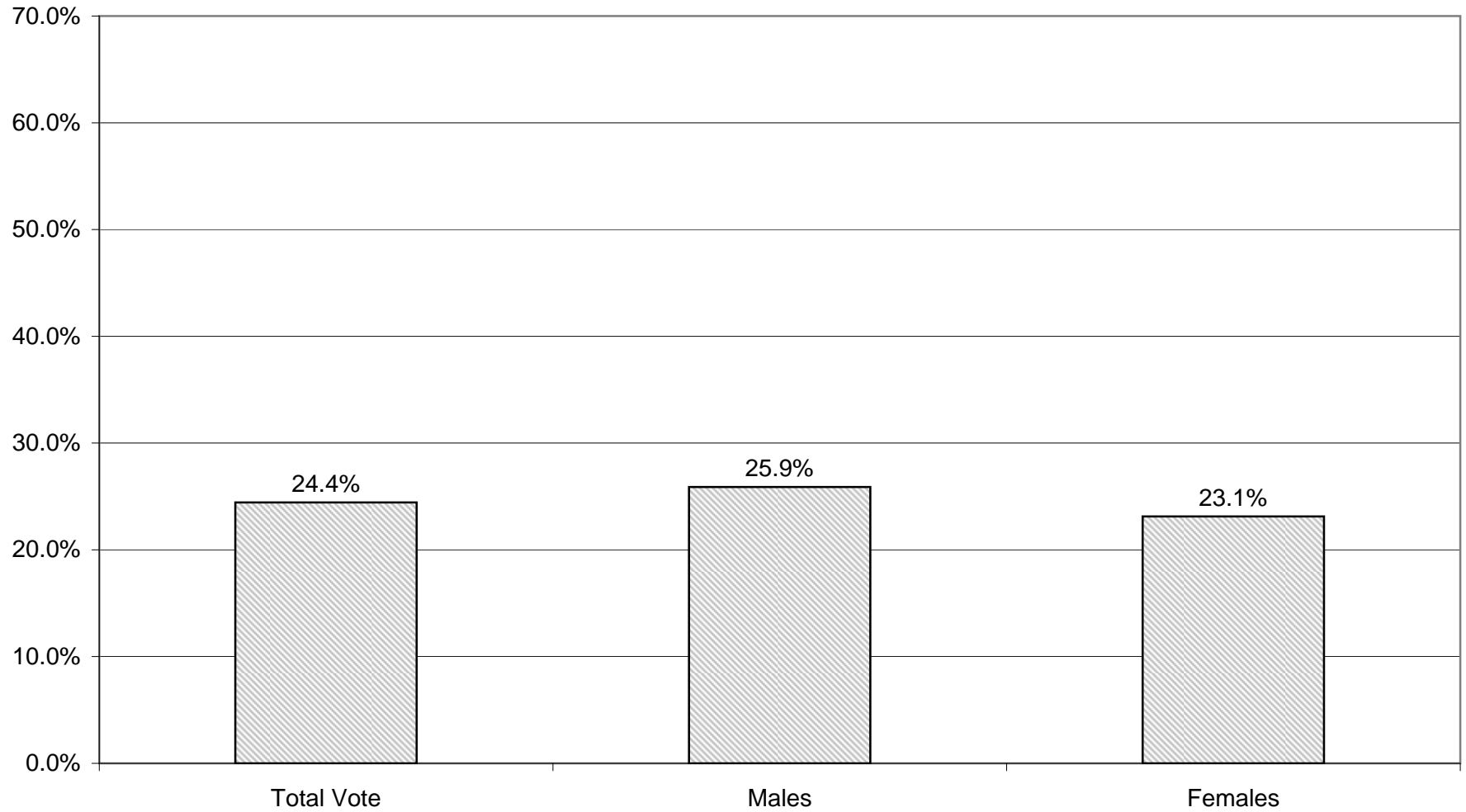
LEGISLATIVE DISTRICT OR TOWN CITY	NDOB			18-24			25-34			35-44		
	VOTED	REGISTERED	TURNOUT	VOTED	REGISTERED	TURNOUT	VOTED	REGISTERED	TURNOUT	VOTED	REGISTERED	TURNOUT
Leg. Dist. 06	0	0	0.00 %	1	12	8.33 %	10	31	32.26 %	10	22	45.45 %
Leg. Dist. 07	0	0	0.00 %	3	6	50.00 %	2	15	13.33 %	1	10	10.00 %
Leg. Dist. 21	0	0	0.00 %	8	57	14.04 %	34	167	20.36 %	32	110	29.09 %
Leg. Dist. 22	0	0	0.00 %	3	38	7.89 %	8	54	14.81 %	1	30	3.33 %
Leg. Dist. 23	0	0	0.00 %	12	77	15.58 %	76	263	28.90 %	43	109	39.45 %
Leg. Dist. 24	2	2	100.00 %	7	31	22.58 %	21	80	26.25 %	31	69	44.93 %
Leg. Dist. 25	0	0	0.00 %	6	35	17.14 %	20	72	27.78 %	16	51	31.37 %
Leg. Dist. 26	0	0	0.00 %	7	45	15.56 %	18	85	21.18 %	24	51	47.06 %
Leg. Dist. 27	0	0	0.00 %	10	45	22.22 %	17	86	19.77 %	21	82	25.61 %
Leg. Dist. 28	0	0	0.00 %	6	43	13.95 %	18	79	22.78 %	10	50	20.00 %
Leg. Dist. 29	0	0	0.00 %	2	43	4.65 %	14	88	15.91 %	16	51	31.37 %
TOTAL:	2	2	100.00 %	65	432	15.05 %	238	1,020	23.33 %	205	635	32.28 %
TOWNS												
Brighton	0	0	0.00 %	7	98	7.14 %	27	167	16.17 %	52	150	34.67 %
Chili	0	0	0.00 %	8	100	8.00 %	20	150	13.33 %	22	136	16.18 %
Clarkson	0	0	0.00 %	4	29	13.79 %	5	30	16.67 %	7	52	13.46 %
East Rochester	0	0	0.00 %	3	22	13.64 %	11	42	26.19 %	15	35	42.86 %
Gates	0	0	0.00 %	3	69	4.35 %	23	123	18.70 %	31	118	26.27 %
Greece	0	0	0.00 %	18	344	5.23 %	42	450	9.33 %	80	490	16.33 %
Hamlin	0	0	0.00 %	3	37	8.11 %	8	46	17.39 %	10	43	23.26 %
Henrietta	0	0	0.00 %	11	114	9.65 %	22	177	12.43 %	23	160	14.38 %
Irondequoit	0	0	0.00 %	24	180	13.33 %	58	279	20.79 %	78	259	30.12 %
Mendon	0	0	0.00 %	3	37	8.11 %	5	27	18.52 %	23	40	57.50 %
Ogden	0	0	0.00 %	5	69	7.25 %	13	89	14.61 %	18	94	19.15 %
Parma	0	0	0.00 %	8	45	17.78 %	4	76	5.26 %	14	70	20.00 %
Penfield	0	0	0.00 %	10	143	6.99 %	23	161	14.29 %	48	187	25.67 %
Perinton	0	0	0.00 %	8	161	4.97 %	19	225	8.44 %	44	274	16.06 %
Pittsford	0	0	0.00 %	2	87	2.30 %	13	89	14.61 %	37	129	28.68 %
Riga	0	0	0.00 %	5	27	18.52 %	10	30	33.33 %	17	33	51.52 %
Rush	0	0	0.00 %	0	13	0.00 %	1	12	8.33 %	5	16	31.25 %
Sweden	0	0	0.00 %	6	66	9.09 %	9	53	16.98 %	10	45	22.22 %
Webster	0	0	0.00 %	12	156	7.69 %	36	211	17.06 %	64	222	28.83 %
Wheatland	0	0	0.00 %	1	18	5.56 %	1	33	3.03 %	8	29	27.59 %
TOTAL:	0	0	0.00 %	141	1,815	7.77 %	350	2,470	14.17 %	606	2,582	23.47 %
GRAND TOTAL:	2	2	100.00 %	206	2,247	9.17 %	588	3,490	16.85 %	811	3,217	25.21 %

2005 GENERAL ELECTION
INDEPENDENCE TURNOUT BY AGE

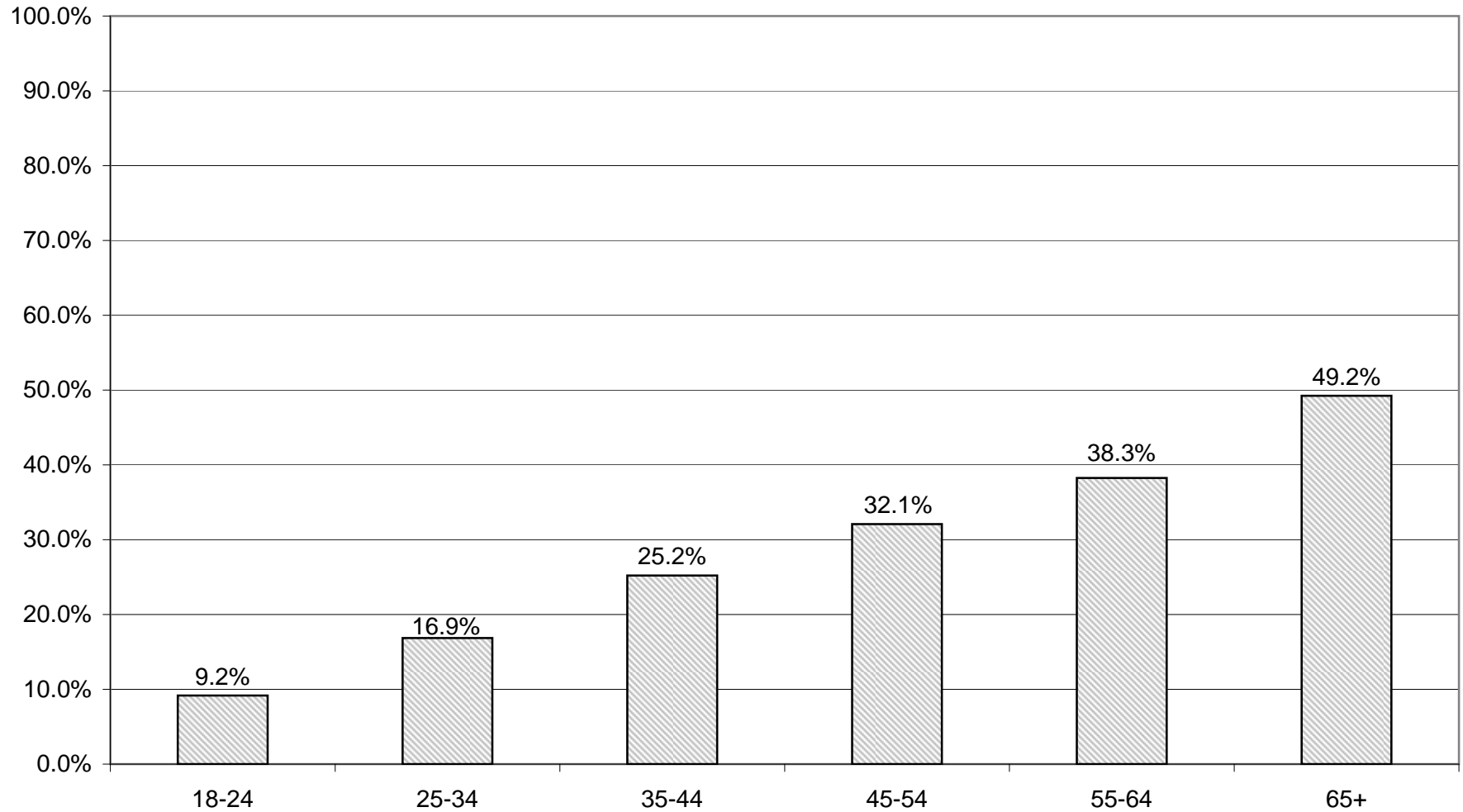
LT/LD SUMMARY
Part 2 of 2

LEGISLATIVE DISTRICT OR TOWN CITY	45-54			55-64			65+		
	VOTED	REGISTERED	TURNOUT	VOTED	REGISTERED	TURNOUT	VOTED	REGISTERED	TURNOUT
Leg. Dist. 06	12	27	44.44 %	5	8	62.50 %	7	9	77.78 %
Leg. Dist. 07	9	17	52.94 %	2	8	25.00 %	4	7	57.14 %
Leg. Dist. 21	28	63	44.44 %	14	32	43.75 %	10	24	41.67 %
Leg. Dist. 22	8	28	28.57 %	3	14	21.43 %	1	2	50.00 %
Leg. Dist. 23	30	57	52.63 %	18	35	51.43 %	3	13	23.08 %
Leg. Dist. 24	16	34	47.06 %	5	22	22.73 %	5	15	33.33 %
Leg. Dist. 25	11	44	25.00 %	10	18	55.56 %	2	10	20.00 %
Leg. Dist. 26	17	36	47.22 %	8	22	36.36 %	1	3	33.33 %
Leg. Dist. 27	21	50	42.00 %	17	28	60.71 %	3	11	27.27 %
Leg. Dist. 28	20	49	40.82 %	8	23	34.78 %	3	8	37.50 %
Leg. Dist. 29	10	37	27.03 %	13	24	54.17 %	9	20	45.00 %
TOTAL:	182	442	41.18 %	103	234	44.02 %	48	122	39.34 %
TOWNS									
Brighton	36	100	36.00 %	21	61	34.43 %	31	61	50.82 %
Chili	19	82	23.17 %	16	51	31.37 %	20	38	52.63 %
Clarkson	7	27	25.93 %	2	6	33.33 %	2	6	33.33 %
East Rochester	11	32	34.38 %	6	15	40.00 %	5	8	62.50 %
Gates	31	77	40.26 %	14	41	34.15 %	28	56	50.00 %
Greece	87	327	26.61 %	62	179	34.64 %	55	145	37.93 %
Hamlin	9	41	21.95 %	7	19	36.84 %	5	8	62.50 %
Henrietta	25	95	26.32 %	19	52	36.54 %	24	44	54.55 %
Irondequoit	72	199	36.18 %	31	102	30.39 %	53	98	54.08 %
Mendon	20	47	42.55 %	9	17	52.94 %	4	13	30.77 %
Ogden	17	55	30.91 %	8	29	27.59 %	10	17	58.82 %
Parma	18	69	26.09 %	13	29	44.83 %	7	17	41.18 %
Penfield	40	150	26.67 %	31	72	43.06 %	43	87	49.43 %
Perinton	55	177	31.07 %	33	94	35.11 %	48	90	53.33 %
Pittsford	28	96	29.17 %	13	42	30.95 %	31	56	55.36 %
Riga	13	25	52.00 %	8	11	72.73 %	4	6	66.67 %
Rush	3	13	23.08 %	5	10	50.00 %	1	3	33.33 %
Sweden	8	42	19.05 %	3	11	27.27 %	12	22	54.55 %
Webster	50	173	28.90 %	40	82	48.78 %	52	87	59.77 %
Wheatland	3	18	16.67 %	2	9	22.22 %	4	5	80.00 %
TOTAL:	552	1,845	29.92 %	343	932	36.80 %	439	867	50.63 %
GRAND TOTAL:	734	2,287	32.09 %	446	1,166	38.25 %	487	989	49.24 %

INDEPENDENCE TURNOUT - TOTAL AND GENDER 2005 GENERAL ELECTION



INDEPENDENCE TURNOUT BY AGE GROUP 2005 GENERAL ELECTION



CONSERVATIVE SUMMARY

2005 GENERAL ELECTION
CONSERVATIVE TURNOUT BY GENDER

LT/LD SUMMARY

LEGISLATIVE DISTRICT OR TOWN CITY	TOTAL VOTERS			MALES			FEMALES		
	VOTED	REGISTERED	TURNOUT	VOTED	REGISTERED	TURNOUT	VOTED	REGISTERED	TURNOUT
Leg. Dist. 06	49	91	53.85 %	25	51	49.02 %	24	40	60.00 %
Leg. Dist. 07	22	27	81.48 %	15	16	93.75 %	7	11	63.64 %
Leg. Dist. 21	56	111	50.45 %	34	67	50.75 %	22	44	50.00 %
Leg. Dist. 22	16	45	35.56 %	11	28	39.29 %	5	17	29.41 %
Leg. Dist. 23	60	101	59.41 %	38	63	60.32 %	22	38	57.89 %
Leg. Dist. 24	44	78	56.41 %	23	46	50.00 %	21	32	65.63 %
Leg. Dist. 25	20	49	40.82 %	11	29	37.93 %	9	20	45.00 %
Leg. Dist. 26	73	133	54.89 %	44	70	62.86 %	29	63	46.03 %
Leg. Dist. 27	32	85	37.65 %	19	52	36.54 %	13	33	39.39 %
Leg. Dist. 28	84	140	60.00 %	44	81	54.32 %	40	59	67.80 %
Leg. Dist. 29	50	111	45.05 %	33	72	45.83 %	17	39	43.59 %
TOTAL:	506	971	52.11 %	297	575	51.65 %	209	396	52.78 %
TOWNS									
Brighton	98	214	45.79 %	60	128	46.88 %	38	86	44.19 %
Chili	212	462	45.89 %	133	274	48.54 %	79	188	42.02 %
Clarkson	49	113	43.36 %	32	69	46.38 %	17	44	38.64 %
East Rochester	34	86	39.53 %	20	49	40.82 %	14	37	37.84 %
Gates	194	397	48.87 %	118	221	53.39 %	76	176	43.18 %
Greece	590	1,570	37.58 %	330	845	39.05 %	260	725	35.86 %
Hamlin	55	127	43.31 %	36	73	49.32 %	19	54	35.19 %
Henrietta	160	491	32.59 %	93	264	35.23 %	67	227	29.52 %
Irondequoit	357	704	50.71 %	206	395	52.15 %	151	309	48.87 %
Mendon	58	96	60.42 %	33	56	58.93 %	25	40	62.50 %
Ogden	139	360	38.61 %	76	180	42.22 %	63	180	35.00 %
Parma	92	254	36.22 %	54	145	37.24 %	38	109	34.86 %
Penfield	158	429	36.83 %	97	253	38.34 %	61	176	34.66 %
Perinton	200	465	43.01 %	124	291	42.61 %	76	174	43.68 %
Pittsford	100	191	52.36 %	68	121	56.20 %	32	70	45.71 %
Riga	59	83	71.08 %	37	50	74.00 %	22	33	66.67 %
Rush	25	51	49.02 %	16	28	57.14 %	9	23	39.13 %
Sweden	46	130	35.38 %	28	77	36.36 %	18	53	33.96 %
Webster	246	540	45.56 %	147	312	47.12 %	99	228	43.42 %
Wheatland	27	77	35.06 %	17	49	34.69 %	10	28	35.71 %
TOTAL:	2,899	6,840	42.38 %	1,725	3,880	44.46 %	1,174	2,960	39.66 %
GRAND TOTAL:	3,405	7,811	43.59 %	2,022	4,455	45.39 %	1,383	3,356	41.21 %

2005 GENERAL ELECTION
CONSERVATIVE TURNOUT BY AGE

LT/LD SUMMARY
Part 1 of 2

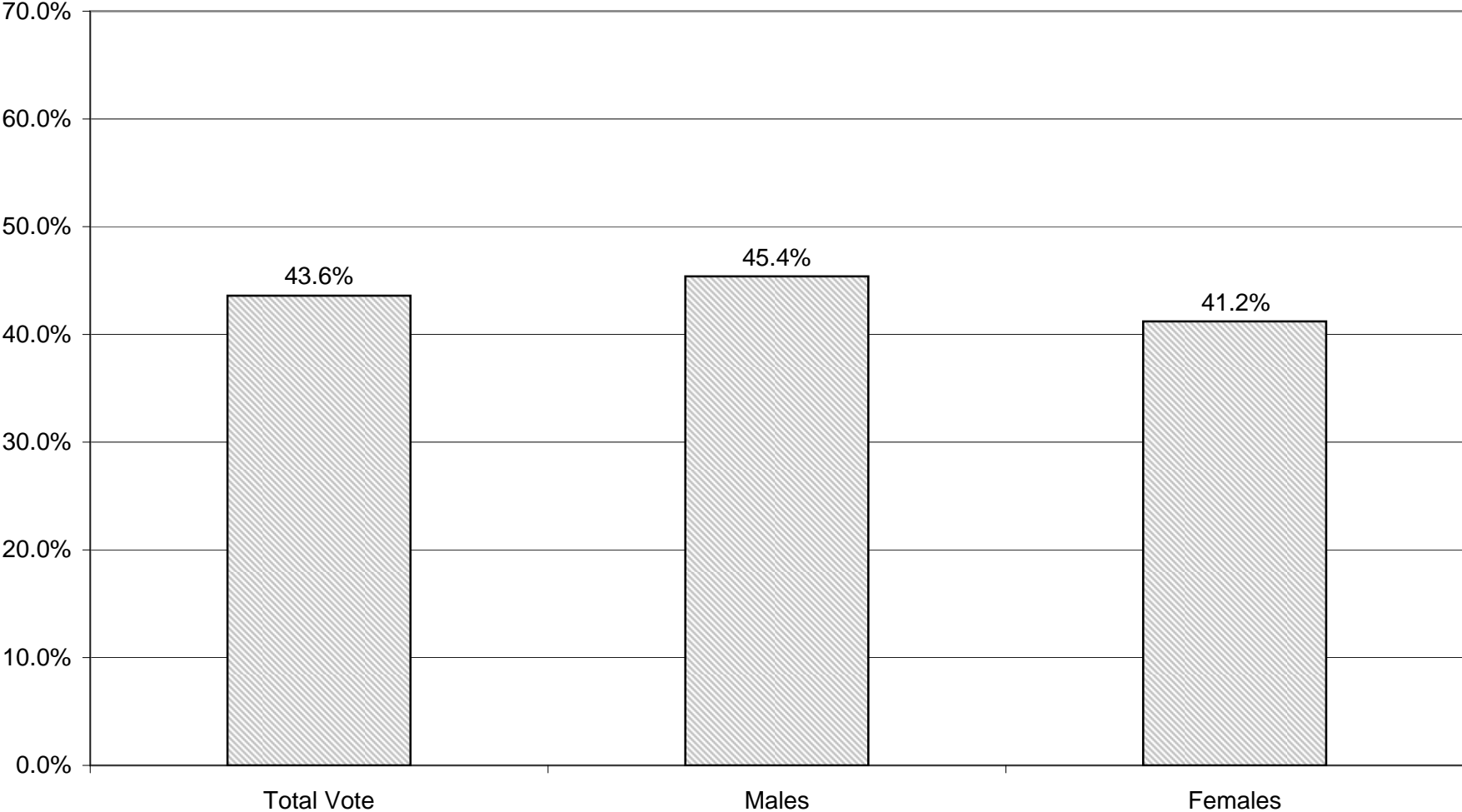
LEGISLATIVE DISTRICT OR TOWN CITY	NDOB			18-24			25-34			35-44		
	VOTED	REGISTERED	TURNOUT	VOTED	REGISTERED	TURNOUT	VOTED	REGISTERED	TURNOUT	VOTED	REGISTERED	TURNOUT
Leg. Dist. 06	1	1	100.00 %	0	3	0.00 %	6	15	40.00 %	12	24	50.00 %
Leg. Dist. 07	0	0	0.00 %	0	0	0.00 %	0	1	0.00 %	6	6	100.00 %
Leg. Dist. 21	3	3	100.00 %	3	5	60.00 %	6	17	35.29 %	5	20	25.00 %
Leg. Dist. 22	0	0	0.00 %	0	0	0.00 %	2	11	18.18 %	3	10	30.00 %
Leg. Dist. 23	1	1	100.00 %	0	2	0.00 %	9	17	52.94 %	17	25	68.00 %
Leg. Dist. 24	2	2	100.00 %	1	2	50.00 %	8	18	44.44 %	4	12	33.33 %
Leg. Dist. 25	1	2	50.00 %	0	1	0.00 %	0	6	0.00 %	2	10	20.00 %
Leg. Dist. 26	1	1	100.00 %	0	4	0.00 %	8	17	47.06 %	14	27	51.85 %
Leg. Dist. 27	1	1	100.00 %	0	5	0.00 %	1	13	7.69 %	8	21	38.10 %
Leg. Dist. 28	0	0	0.00 %	1	2	50.00 %	2	12	16.67 %	17	29	58.62 %
Leg. Dist. 29	0	0	0.00 %	0	8	0.00 %	9	18	50.00 %	9	25	36.00 %
TOTAL:	10	11	90.91 %	5	32	15.63 %	51	145	35.17 %	97	209	46.41 %
TOWNS												
Brighton	4	4	100.00 %	4	11	36.36 %	6	28	21.43 %	14	36	38.89 %
Chili	3	3	100.00 %	6	27	22.22 %	16	51	31.37 %	30	100	30.00 %
Clarkson	0	0	0.00 %	1	8	12.50 %	6	12	50.00 %	13	43	30.23 %
East Rochester	0	1	0.00 %	1	7	14.29 %	0	12	0.00 %	12	24	50.00 %
Gates	1	2	50.00 %	1	12	8.33 %	16	50	32.00 %	39	106	36.79 %
Greece	6	13	46.15 %	17	107	15.89 %	37	159	23.27 %	89	307	28.99 %
Hamlin	0	0	0.00 %	0	3	0.00 %	2	10	20.00 %	12	27	44.44 %
Henrietta	2	3	66.67 %	3	28	10.71 %	15	49	30.61 %	25	96	26.04 %
Irondequoit	8	9	88.89 %	6	23	26.09 %	20	76	26.32 %	53	135	39.26 %
Mendon	0	0	0.00 %	1	1	100.00 %	3	14	21.43 %	11	18	61.11 %
Ogden	2	2	100.00 %	3	26	11.54 %	3	28	10.71 %	29	85	34.12 %
Parma	0	0	0.00 %	2	12	16.67 %	7	30	23.33 %	13	56	23.21 %
Penfield	1	2	50.00 %	2	25	8.00 %	6	43	13.95 %	32	77	41.56 %
Perinton	0	0	0.00 %	1	13	7.69 %	9	38	23.68 %	21	76	27.63 %
Pittsford	3	3	100.00 %	1	4	25.00 %	3	10	30.00 %	12	36	33.33 %
Riga	0	0	0.00 %	0	4	0.00 %	3	8	37.50 %	21	21	100.00 %
Rush	0	0	0.00 %	0	0	0.00 %	0	3	0.00 %	8	14	57.14 %
Sweden	0	0	0.00 %	3	9	33.33 %	5	17	29.41 %	7	33	21.21 %
Webster	2	2	100.00 %	5	25	20.00 %	14	58	24.14 %	43	113	38.05 %
Wheatland	0	0	0.00 %	1	1	100.00 %	1	7	14.29 %	5	21	23.81 %
TOTAL:	32	44	72.73 %	58	346	16.76 %	172	703	24.47 %	489	1,424	34.34 %
GRAND TOTAL:	42	55	76.36 %	63	378	16.67 %	223	848	26.30 %	586	1,633	35.88 %

2005 GENERAL ELECTION
CONSERVATIVE TURNOUT BY AGE

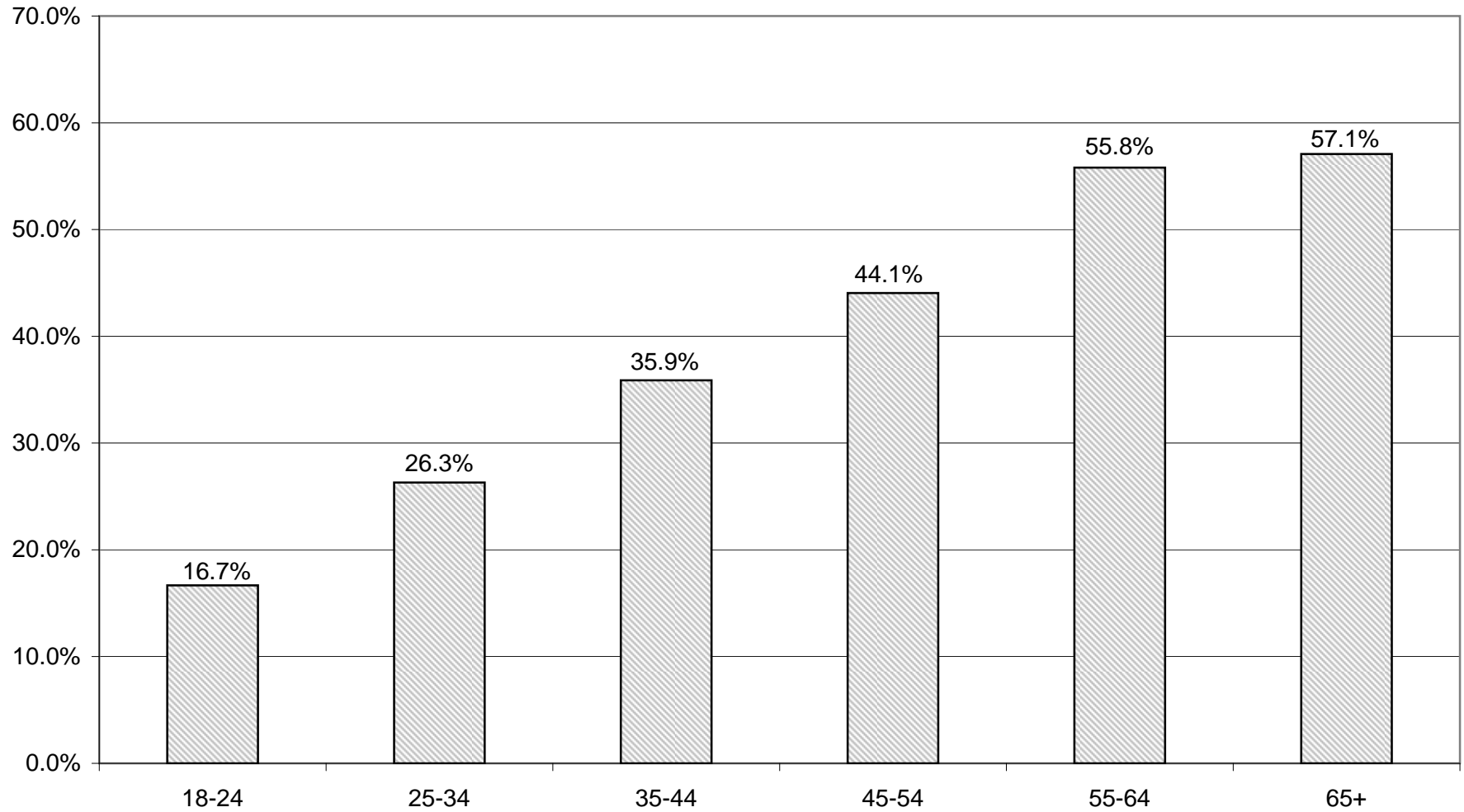
LT/LD SUMMARY
Part 2 of 2

LEGISLATIVE DISTRICT OR TOWN CITY	45-54			55-64			65+		
	VOTED	REGISTERED	TURNOUT	VOTED	REGISTERED	TURNOUT	VOTED	REGISTERED	TURNOUT
Leg. Dist. 06	11	18	61.11 %	14	18	77.78 %	5	12	41.67 %
Leg. Dist. 07	7	9	77.78 %	8	10	80.00 %	1	1	100.00 %
Leg. Dist. 21	23	39	58.97 %	10	19	52.63 %	6	8	75.00 %
Leg. Dist. 22	5	14	35.71 %	4	6	66.67 %	2	4	50.00 %
Leg. Dist. 23	10	22	45.45 %	13	20	65.00 %	10	14	71.43 %
Leg. Dist. 24	10	19	52.63 %	11	15	73.33 %	8	10	80.00 %
Leg. Dist. 25	9	15	60.00 %	5	8	62.50 %	3	7	42.86 %
Leg. Dist. 26	24	44	54.55 %	16	24	66.67 %	10	16	62.50 %
Leg. Dist. 27	10	20	50.00 %	7	18	38.89 %	5	7	71.43 %
Leg. Dist. 28	32	45	71.11 %	16	32	50.00 %	16	20	80.00 %
Leg. Dist. 29	11	25	44.00 %	15	28	53.57 %	6	7	85.71 %
TOTAL:	152	270	56.30 %	119	198	60.10 %	72	106	67.92 %
TOWNS									
Brighton	21	48	43.75 %	21	42	50.00 %	28	45	62.22 %
Chili	55	112	49.11 %	54	95	56.84 %	48	74	64.86 %
Clarkson	16	29	55.17 %	10	15	66.67 %	3	6	50.00 %
East Rochester	14	25	56.00 %	7	14	50.00 %	0	3	0.00 %
Gates	59	94	62.77 %	46	81	56.79 %	32	52	61.54 %
Greece	179	473	37.84 %	142	299	47.49 %	120	212	56.60 %
Hamlin	24	56	42.86 %	11	18	61.11 %	6	13	46.15 %
Henrietta	35	129	27.13 %	48	110	43.64 %	32	76	42.11 %
Irondequoit	100	187	53.48 %	97	148	65.54 %	73	126	57.94 %
Mendon	22	33	66.67 %	13	19	68.42 %	8	11	72.73 %
Ogden	44	114	38.60 %	34	65	52.31 %	24	40	60.00 %
Parma	24	78	30.77 %	32	48	66.67 %	14	30	46.67 %
Penfield	40	117	34.19 %	48	101	47.52 %	29	64	45.31 %
Perinton	38	111	34.23 %	72	126	57.14 %	59	101	58.42 %
Pittsford	19	36	52.78 %	36	58	62.07 %	26	44	59.09 %
Riga	16	24	66.67 %	14	15	93.33 %	5	11	45.45 %
Rush	6	15	40.00 %	8	14	57.14 %	3	5	60.00 %
Sweden	17	44	38.64 %	11	19	57.89 %	3	8	37.50 %
Webster	67	157	42.68 %	70	113	61.95 %	45	72	62.50 %
Wheatland	11	25	44.00 %	6	13	46.15 %	3	10	30.00 %
TOTAL:	807	1,907	42.32 %	780	1,413	55.20 %	561	1,003	55.93 %
GRAND TOTAL:	959	2,177	44.05 %	899	1,611	55.80 %	633	1,109	57.08 %

CONSERVATIVE TURNOUT - TOTAL AND GENDER 2005 GENERAL ELECTION



CONSERVATIVE TURNOUT BY AGE GROUP 2005 GENERAL ELECTION



WORKING FAMILIES SUMMARY

2005 GENERAL ELECTION
WORKING FAMILIES TURNOUT BY GENDER

LT/LD SUMMARY

LEGISLATIVE DISTRICT OR TOWN CITY	TOTAL VOTERS			MALES			FEMALES		
	VOTED	REGISTERED	TURNOUT	VOTED	REGISTERED	TURNOUT	VOTED	REGISTERED	TURNOUT
Leg. Dist. 06	1	8	12.50 %	1	3	33.33 %	0	5	0.00 %
Leg. Dist. 07	3	5	60.00 %	2	3	66.67 %	1	2	50.00 %
Leg. Dist. 21	11	52	21.15 %	1	19	5.26 %	10	33	30.30 %
Leg. Dist. 22	7	57	12.28 %	2	19	10.53 %	5	38	13.16 %
Leg. Dist. 23	6	28	21.43 %	3	11	27.27 %	3	17	17.65 %
Leg. Dist. 24	7	21	33.33 %	4	7	57.14 %	3	14	21.43 %
Leg. Dist. 25	7	36	19.44 %	1	16	6.25 %	6	20	30.00 %
Leg. Dist. 26	7	31	22.58 %	3	12	25.00 %	4	19	21.05 %
Leg. Dist. 27	11	60	18.33 %	3	21	14.29 %	8	39	20.51 %
Leg. Dist. 28	11	67	16.42 %	4	22	18.18 %	7	45	15.56 %
Leg. Dist. 29	4	50	8.00 %	3	14	21.43 %	1	36	2.78 %
TOTAL:	75	415	18.07 %	27	147	18.37 %	48	268	17.91 %
TOWNS									
Brighton	4	26	15.38 %	3	12	25.00 %	1	14	7.14 %
Chili	8	30	26.67 %	5	16	31.25 %	3	14	21.43 %
Clarkson	2	12	16.67 %	1	4	25.00 %	1	8	12.50 %
East Rochester	2	18	11.11 %	2	6	33.33 %	0	12	0.00 %
Gates	4	31	12.90 %	1	13	7.69 %	3	18	16.67 %
Greece	26	129	20.16 %	11	42	26.19 %	15	87	17.24 %
Hamlin	3	9	33.33 %	2	4	50.00 %	1	5	20.00 %
Henrietta	2	30	6.67 %	1	14	7.14 %	1	16	6.25 %
Irondequoit	11	49	22.45 %	5	24	20.83 %	6	25	24.00 %
Mendon	0	3	0.00 %	0	3	0.00 %	0	0	0.00 %
Ogden	4	22	18.18 %	2	13	15.38 %	2	9	22.22 %
Parma	3	24	12.50 %	3	15	20.00 %	0	9	0.00 %
Penfield	3	28	10.71 %	2	10	20.00 %	1	18	5.56 %
Perinton	2	23	8.70 %	1	13	7.69 %	1	10	10.00 %
Pittsford	4	14	28.57 %	0	4	0.00 %	4	10	40.00 %
Riga	3	12	25.00 %	0	6	0.00 %	3	6	50.00 %
Rush	0	5	0.00 %	0	5	0.00 %	0	0	0.00 %
Sweden	2	11	18.18 %	0	5	0.00 %	2	6	33.33 %
Webster	3	28	10.71 %	2	15	13.33 %	1	13	7.69 %
Wheatland	1	7	14.29 %	1	5	20.00 %	0	2	0.00 %
TOTAL:	87	511	17.03 %	42	229	18.34 %	45	282	15.96 %
GRAND TOTAL:	162	926	17.49 %	69	376	18.35 %	93	550	16.91 %

2005 GENERAL ELECTION
WORKING FAMILIES TURNOUT BY AGE

LT/LD SUMMARY
Part 1 of 2

LEGISLATIVE DISTRICT OR TOWN CITY	NDOB			18-24			25-34			35-44		
	VOTED	REGISTERED	TURNOUT	VOTED	REGISTERED	TURNOUT	VOTED	REGISTERED	TURNOUT	VOTED	REGISTERED	TURNOUT
Leg. Dist. 06	0	0	0.00 %	0	0	0.00 %	0	4	0.00 %	1	4	25.00 %
Leg. Dist. 07	0	0	0.00 %	0	2	0.00 %	1	1	100.00 %	0	0	0.00 %
Leg. Dist. 21	0	0	0.00 %	2	10	20.00 %	4	21	19.05 %	3	12	25.00 %
Leg. Dist. 22	0	0	0.00 %	0	16	0.00 %	4	24	16.67 %	0	8	0.00 %
Leg. Dist. 23	0	0	0.00 %	0	0	0.00 %	1	10	10.00 %	2	7	28.57 %
Leg. Dist. 24	0	0	0.00 %	0	6	0.00 %	2	4	50.00 %	3	8	37.50 %
Leg. Dist. 25	0	0	0.00 %	2	4	50.00 %	2	12	16.67 %	2	14	14.29 %
Leg. Dist. 26	0	0	0.00 %	0	5	0.00 %	1	11	9.09 %	2	10	20.00 %
Leg. Dist. 27	0	0	0.00 %	0	14	0.00 %	1	21	4.76 %	6	12	50.00 %
Leg. Dist. 28	0	0	0.00 %	0	8	0.00 %	4	28	14.29 %	2	20	10.00 %
Leg. Dist. 29	0	0	0.00 %	0	12	0.00 %	1	14	7.14 %	1	17	5.88 %
TOTAL:	0	0	0.00 %	4	77	5.19 %	21	150	14.00 %	22	112	19.64 %
TOWNS												
Brighton	0	0	0.00 %	0	6	0.00 %	0	8	0.00 %	0	5	0.00 %
Chili	0	0	0.00 %	0	1	0.00 %	0	6	0.00 %	1	7	14.29 %
Clarkson	0	0	0.00 %	0	4	0.00 %	0	2	0.00 %	2	1	200.00 %
East Rochester	0	0	0.00 %	0	6	0.00 %	1	4	25.00 %	0	7	0.00 %
Gates	0	0	0.00 %	0	3	0.00 %	0	9	0.00 %	3	12	25.00 %
Greece	0	0	0.00 %	3	16	18.75 %	4	33	12.12 %	8	48	16.67 %
Hamlin	0	0	0.00 %	1	3	33.33 %	2	3	66.67 %	0	2	0.00 %
Henrietta	0	0	0.00 %	1	1	100.00 %	1	4	25.00 %	0	14	0.00 %
Irondequoit	0	0	0.00 %	0	7	0.00 %	2	10	20.00 %	3	20	15.00 %
Mendon	0	0	0.00 %	0	2	0.00 %	0	0	0.00 %	0	1	0.00 %
Ogden	0	0	0.00 %	0	2	0.00 %	1	6	16.67 %	2	11	18.18 %
Parma	0	0	0.00 %	0	1	0.00 %	0	5	0.00 %	0	7	0.00 %
Penfield	0	0	0.00 %	0	1	0.00 %	0	7	0.00 %	1	6	16.67 %
Perinton	0	0	0.00 %	0	7	0.00 %	2	6	33.33 %	0	4	0.00 %
Pittsford	0	0	0.00 %	0	3	0.00 %	0	0	0.00 %	3	6	50.00 %
Riga	0	0	0.00 %	0	1	0.00 %	3	7	42.86 %	0	2	0.00 %
Rush	0	0	0.00 %	0	0	0.00 %	0	1	0.00 %	0	1	0.00 %
Sweden	0	0	0.00 %	0	1	0.00 %	0	6	0.00 %	1	2	50.00 %
Webster	0	0	0.00 %	0	2	0.00 %	1	10	10.00 %	1	12	8.33 %
Wheatland	0	0	0.00 %	0	1	0.00 %	1	3	33.33 %	0	3	0.00 %
TOTAL:	0	0	0.00 %	5	68	7.35 %	18	130	13.85 %	25	171	14.62 %
GRAND TOTAL:	0	0	0.00 %	9	145	6.21 %	39	280	13.93 %	47	283	16.61 %

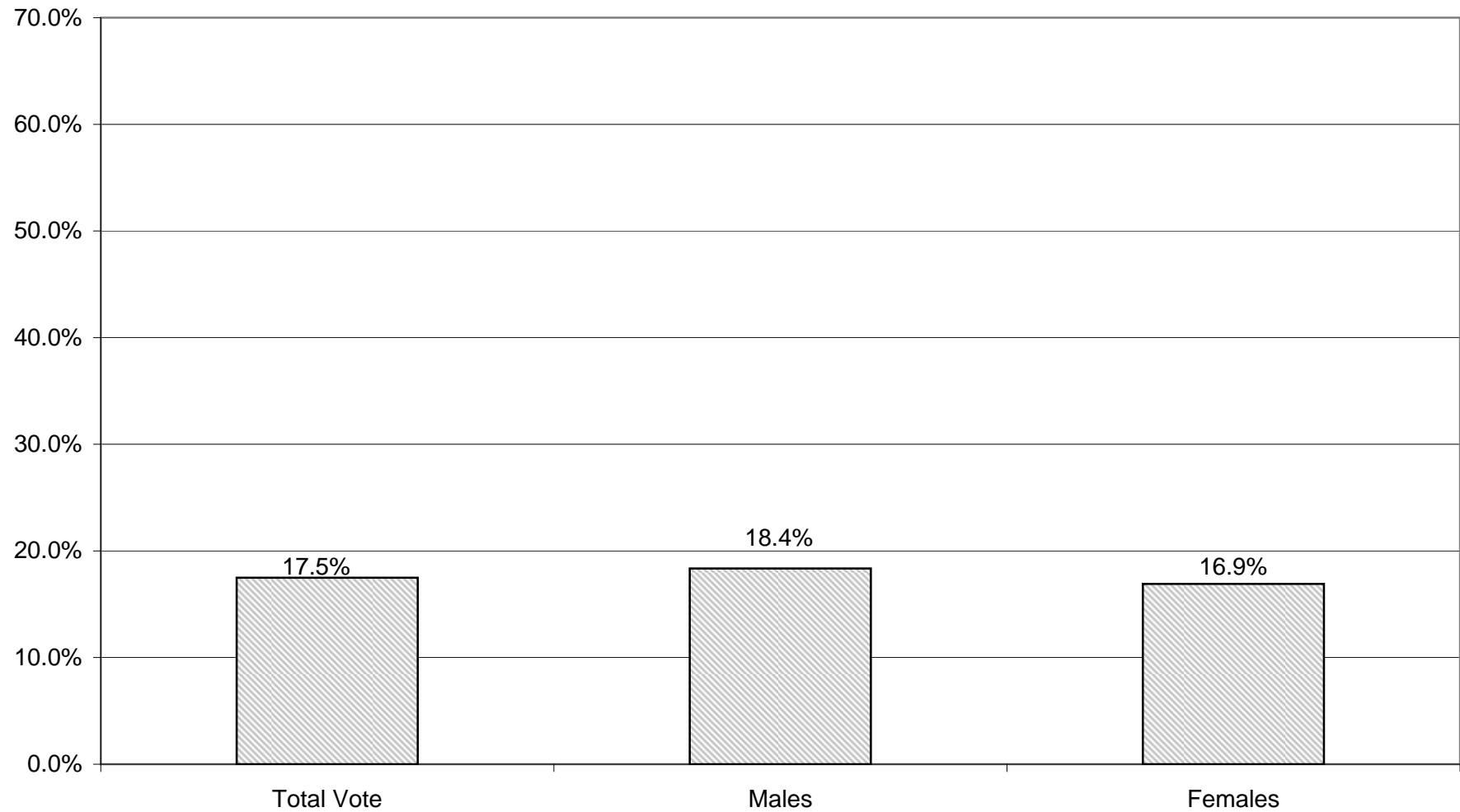
2006 GENERAL ELECTION
WORKING FAMILIES TURNOUT BY AGE

LT/LD SUMMARY

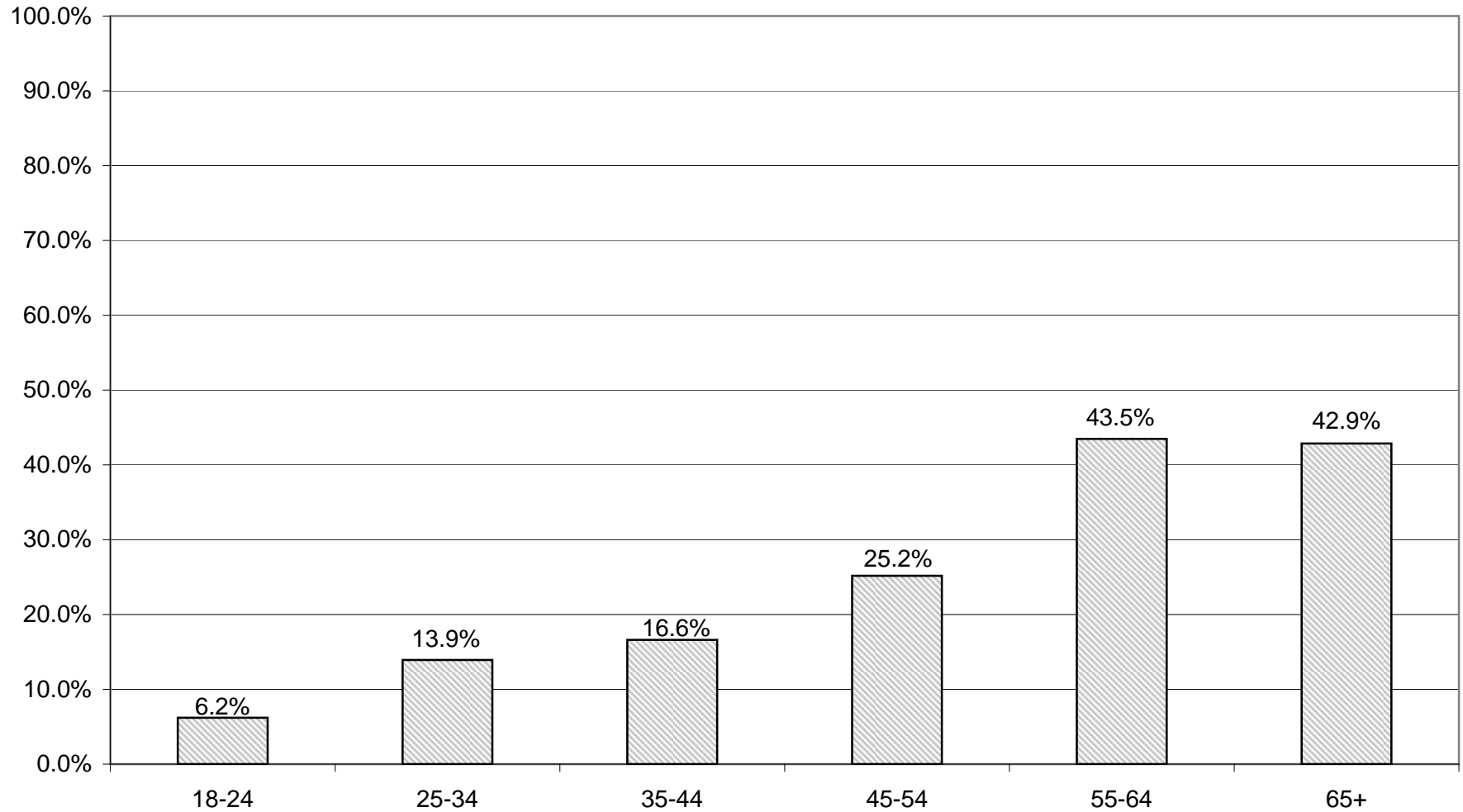
Part 2 of 2

LEGISLATIVE DISTRICT OR TOWN	45-54			55-64			65+		
	VOTED	REGISTERED	TURNOUT	VOTED	REGISTERED	TURNOUT	VOTED	REGISTERED	TURNOUT
CITY									
Leg. Dist. 06	0	0	0.00 %	0	0	0.00 %	0	0	0.00 %
Leg. Dist. 07	2	2	100.00 %	0	0	0.00 %	0	0	0.00 %
Leg. Dist. 21	2	9	22.22 %	0	0	0.00 %	0	0	0.00 %
Leg. Dist. 22	2	8	25.00 %	1	1	100.00 %	0	0	0.00 %
Leg. Dist. 23	1	8	12.50 %	1	2	50.00 %	1	1	100.00 %
Leg. Dist. 24	0	1	0.00 %	2	2	100.00 %	0	0	0.00 %
Leg. Dist. 25	0	3	0.00 %	1	2	50.00 %	0	1	0.00 %
Leg. Dist. 26	1	2	50.00 %	1	1	100.00 %	2	2	100.00 %
Leg. Dist. 27	2	9	22.22 %	1	2	50.00 %	1	2	50.00 %
Leg. Dist. 28	4	9	44.44 %	1	1	100.00 %	0	1	0.00 %
Leg. Dist. 29	1	4	25.00 %	1	3	33.33 %	0	0	0.00 %
TOTAL:	15	55	27.27 %	2	14	64.29 %	4	7	57.14 %
TOWNS									
Brighton	2	3	66.67 %	2	4	50.00 %	0	0	0.00 %
Chili	7	15	46.67 %	0	1	0.00 %	0	0	0.00 %
Clarkson	0	5	0.00 %	0	0	0.00 %	0	0	0.00 %
East Rochester	0	0	0.00 %	1	1	100.00 %	0	0	0.00 %
Gates	0	4	0.00 %	1	3	33.33 %	0	0	0.00 %
Greece	6	22	27.27 %	3	6	50.00 %	2	4	50.00 %
Hamlin	0	1	0.00 %	0	0	0.00 %	0	0	0.00 %
Henrietta	0	8	0.00 %	0	2	0.00 %	0	1	0.00 %
Irondequoit	2	7	28.57 %	3	3	100.00 %	1	2	50.00 %
Mendon	0	0	0.00 %	0	0	0.00 %	1	0	0.00 %
Ogden	1	3	33.33 %	0	0	0.00 %	0	0	0.00 %
Parma	2	7	28.57 %	0	2	0.00 %	1	2	50.00 %
Penfield	2	5	40.00 %	0	7	0.00 %	0	2	0.00 %
Perinton	0	5	0.00 %	0	1	0.00 %	0	0	0.00 %
Pittsford	0	3	0.00 %	1	1	100.00 %	0	1	0.00 %
Riga	0	2	0.00 %	0	0	0.00 %	0	0	0.00 %
Rush	0	3	0.00 %	0	0	0.00 %	0	0	0.00 %
Sweden	1	2	50.00 %	0	0	0.00 %	0	0	0.00 %
Webster	0	1	0.00 %	0	1	0.00 %	1	2	50.00 %
Wheatland	0	0	0.00 %	0	0	0.00 %	0	0	0.00 %
TOTAL:	23	96	23.96 %	3	32	34.38 %	5	14	35.71 %
GRAND TOTAL:	38	151	25.17 %	20	46	43.48 %	9	21	42.86 %

WORKING FAMILIES TURNOUT - TOTAL AND GENDER 2005 GENERAL ELECTION



WORKING FAMILIES TURNOUT BY AGE GROUP 2005 GENERAL ELECTION



BLANKS SUMMARY

2005 GENERAL ELECTION
BLANK TURNOUT BY GENDER

LT/LD SUMMARY

LEGISLATIVE DISTRICT OR TOWN	TOTAL VOTERS			MALES			FEMALES		
	VOTED	REGISTERED	TURNOUT	VOTED	REGISTERED	TURNOUT	VOTED	REGISTERED	TURNOUT
CITY									
Leg. Dist. 06	356	807	44.11 %	176	368	47.83 %	180	439	41.00 %
Leg. Dist. 07	153	359	42.62 %	77	173	44.51 %	76	186	40.86 %
Leg. Dist. 21	940	2,777	33.85 %	486	1,347	36.08 %	454	1,430	31.75 %
Leg. Dist. 22	213	1,597	13.34 %	109	706	15.44 %	104	891	11.67 %
Leg. Dist. 23	1,350	3,208	42.08 %	727	1,691	42.99 %	623	1,517	41.07 %
Leg. Dist. 24	752	1,820	41.32 %	406	947	42.87 %	346	873	39.63 %
Leg. Dist. 25	415	1,718	24.16 %	232	899	25.81 %	183	819	22.34 %
Leg. Dist. 26	512	1,639	31.24 %	249	760	32.76 %	263	879	29.92 %
Leg. Dist. 27	609	2,053	29.66 %	304	1,003	30.31 %	305	1,050	29.05 %
Leg. Dist. 28	478	2,006	23.83 %	236	874	27.00 %	242	1,132	21.38 %
Leg. Dist. 29	506	2,124	23.82 %	237	929	25.51 %	269	1,195	22.51 %
TOTAL:	6,284	20,108	31.25 %	3,239	9,697	33.40 %	3,045	10,411	29.25 %
TOWNS									
Brighton	2,031	5,331	38.10 %	1,025	2,583	39.68 %	1,006	2,748	36.61 %
Chili	1,212	4,502	26.92 %	616	2,183	28.22 %	596	2,319	25.70 %
Clarkson	262	855	30.64 %	141	431	32.71 %	121	424	28.54 %
East Rochester	367	999	36.74 %	181	441	41.04 %	186	558	33.33 %
Gates	1,208	4,322	27.95 %	609	2,090	29.14 %	599	2,232	26.84 %
Greece	3,725	15,671	23.77 %	1,955	7,448	26.25 %	1,770	8,223	21.52 %
Hamlin	344	1,287	26.73 %	197	637	30.93 %	147	650	22.62 %
Henrietta	1,184	4,994	23.71 %	627	2,515	24.93 %	557	2,479	22.47 %
Irondequoit	3,224	8,705	37.04 %	1,637	4,136	39.58 %	1,587	4,569	34.73 %
Mendon	749	1,465	51.13 %	375	715	52.45 %	374	750	49.87 %
Ogden	842	3,179	26.49 %	456	1,571	29.03 %	386	1,608	24.00 %
Parma	608	2,766	21.98 %	304	1,316	23.10 %	304	1,450	20.97 %
Penfield	1,932	6,354	30.41 %	1,027	3,045	33.73 %	905	3,309	27.35 %
Perinton	2,330	8,264	28.19 %	1,233	4,033	30.57 %	1,097	4,231	25.93 %
Pittsford	1,481	4,660	31.78 %	748	2,261	33.08 %	733	2,399	30.55 %
Riga	470	917	51.25 %	243	460	52.83 %	227	457	49.67 %
Rush	249	653	38.13 %	124	324	38.27 %	125	329	37.99 %
Sweden	414	1,611	25.70 %	214	785	27.26 %	200	826	24.21 %
Webster	2,455	7,432	33.03 %	1,290	3,564	36.20 %	1,165	3,868	30.12 %
Wheatland	184	800	23.00 %	97	399	24.31 %	87	401	21.70 %
TOTAL:	25,271	84,767	29.81 %	13,099	40,937	32.00 %	12,172	43,830	27.77 %
GRAND TOTAL:	31,555	104,875	30.09 %	16,338	50,634	32.27 %	15,217	54,241	28.05 %

2005 GENERAL ELECTION
BLANK TURNOUT BY AGE

LT/LD SUMMARY
Part 1 of 2

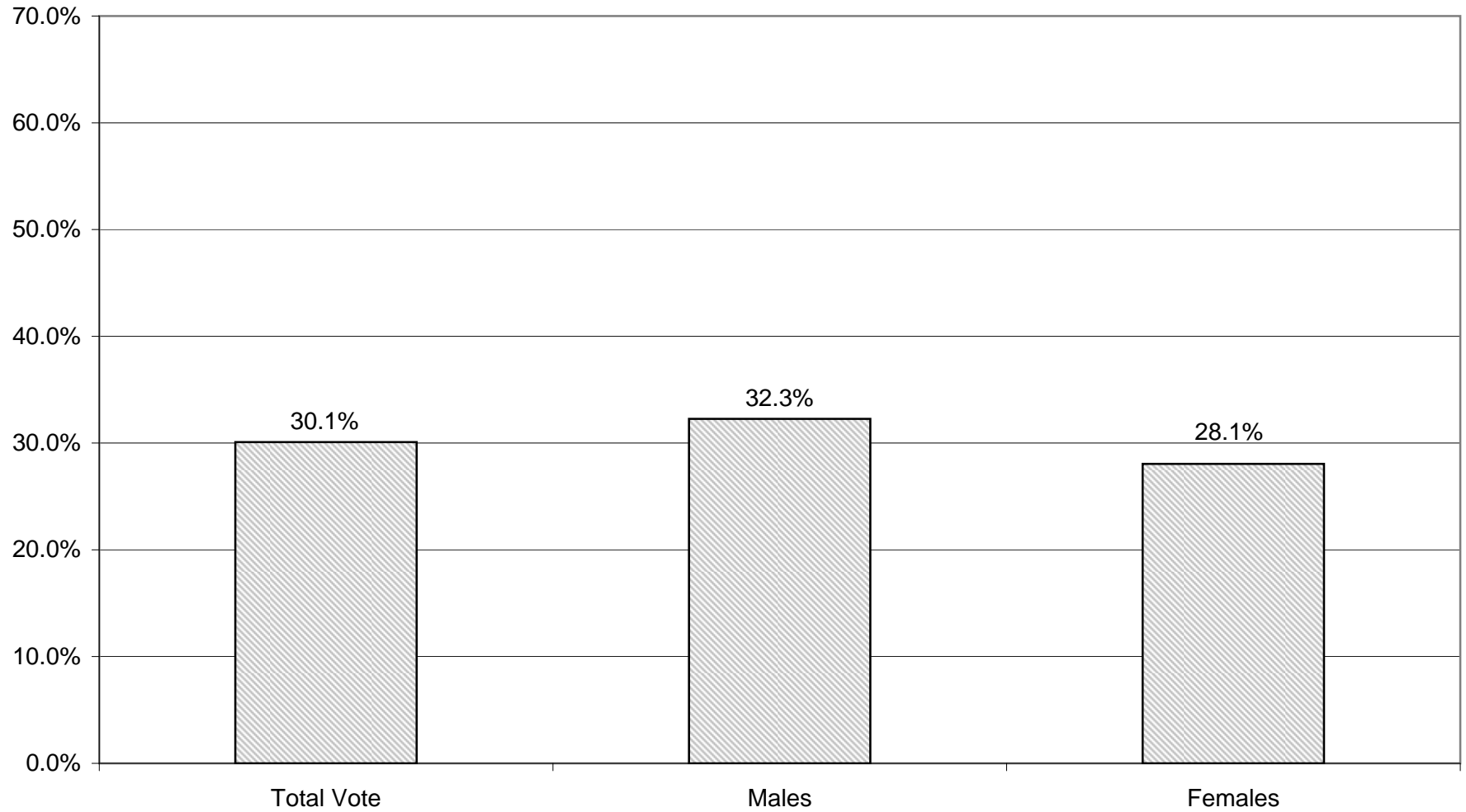
LEGISLATIVE DISTRICT OR TOWN CITY	NDOB			18-24			25-34			35-44		
	VOTED	REGISTERED	TURNOUT	VOTED	REGISTERED	TURNOUT	VOTED	REGISTERED	TURNOUT	VOTED	REGISTERED	TURNOUT
Leg. Dist. 06	3	3	100.00 %	18	84	21.43 %	41	171	23.98 %	65	158	41.14 %
Leg. Dist. 07	0	1	0.00 %	4	36	11.11 %	13	57	22.81 %	25	68	36.76 %
Leg. Dist. 21	7	9	77.78 %	58	333	17.42 %	201	835	24.07 %	185	572	32.34 %
Leg. Dist. 22	3	6	50.00 %	23	314	7.32 %	34	455	7.47 %	38	328	11.59 %
Leg. Dist. 23	17	22	77.27 %	88	395	22.28 %	278	1,066	26.08 %	279	639	43.66 %
Leg. Dist. 24	6	10	60.00 %	34	197	17.26 %	148	524	28.24 %	158	355	44.51 %
Leg. Dist. 25	2	4	50.00 %	30	392	7.65 %	82	426	19.25 %	75	323	23.22 %
Leg. Dist. 26	2	3	66.67 %	29	233	12.45 %	59	427	13.82 %	122	350	34.86 %
Leg. Dist. 27	10	14	71.43 %	56	301	18.60 %	88	534	16.48 %	100	421	23.75 %
Leg. Dist. 28	10	15	66.67 %	30	322	9.32 %	48	440	10.91 %	91	473	19.24 %
Leg. Dist. 29	9	16	56.25 %	15	309	4.85 %	56	477	11.74 %	95	442	21.49 %
TOTAL:	69	103	66.99 %	385	2,916	13.20 %	1,048	5,412	19.36 %	1,233	4,129	29.86 %
TOWNS												
Brighton	27	33	81.82 %	59	556	10.61 %	161	981	16.41 %	331	932	35.52 %
Chili	14	18	77.78 %	31	610	5.08 %	88	880	10.00 %	218	888	24.55 %
Clarkson	0	0	0.00 %	13	119	10.92 %	24	141	17.02 %	62	202	30.69 %
East Rochester	8	11	72.73 %	13	134	9.70 %	36	199	18.09 %	73	181	40.33 %
Gates	8	12	66.67 %	42	503	8.35 %	90	872	10.32 %	220	889	24.75 %
Greece	51	84	60.71 %	132	2,207	5.98 %	219	2,717	8.06 %	574	2,895	19.83 %
Hamlin	1	1	100.00 %	14	182	7.69 %	30	231	12.99 %	75	293	25.60 %
Henrietta	4	10	40.00 %	30	600	5.00 %	111	965	11.50 %	210	1,072	19.59 %
Irondequoit	60	86	69.77 %	105	937	11.21 %	232	1,470	15.78 %	549	1,604	34.23 %
Mendon	4	4	100.00 %	24	178	13.48 %	48	141	34.04 %	168	332	50.60 %
Ogden	8	12	66.67 %	22	404	5.45 %	52	555	9.37 %	168	684	24.56 %
Parma	2	2	100.00 %	21	439	4.78 %	40	454	8.81 %	125	573	21.82 %
Penfield	18	32	56.25 %	52	706	7.37 %	123	894	13.76 %	350	1,202	29.12 %
Perinton	5	13	38.46 %	56	947	5.91 %	145	1,211	11.97 %	367	1,604	22.88 %
Pittsford	8	14	57.14 %	26	512	5.08 %	62	581	10.67 %	239	833	28.69 %
Riga	1	1	100.00 %	20	115	17.39 %	39	134	29.10 %	102	197	51.78 %
Rush	0	0	0.00 %	3	62	4.84 %	13	81	16.05 %	50	121	41.32 %
Sweden	0	0	0.00 %	14	259	5.41 %	26	293	8.87 %	70	321	21.81 %
Webster	28	36	77.78 %	64	768	8.33 %	161	1,095	14.70 %	446	1,598	27.91 %
Wheatland	2	3	66.67 %	8	104	7.69 %	12	129	9.30 %	39	180	21.67 %
TOTAL:	249	372	66.94 %	749	10,342	7.24 %	1,712	14,024	12.21 %	4,436	16,601	26.72 %
GRAND TOTAL:	318	475	66.95 %	1,134	13,258	8.55 %	2,760	19,436	14.20 %	5,669	20,730	27.35 %

2005 GENERAL ELECTION
BLANK TURNOUT BY AGE

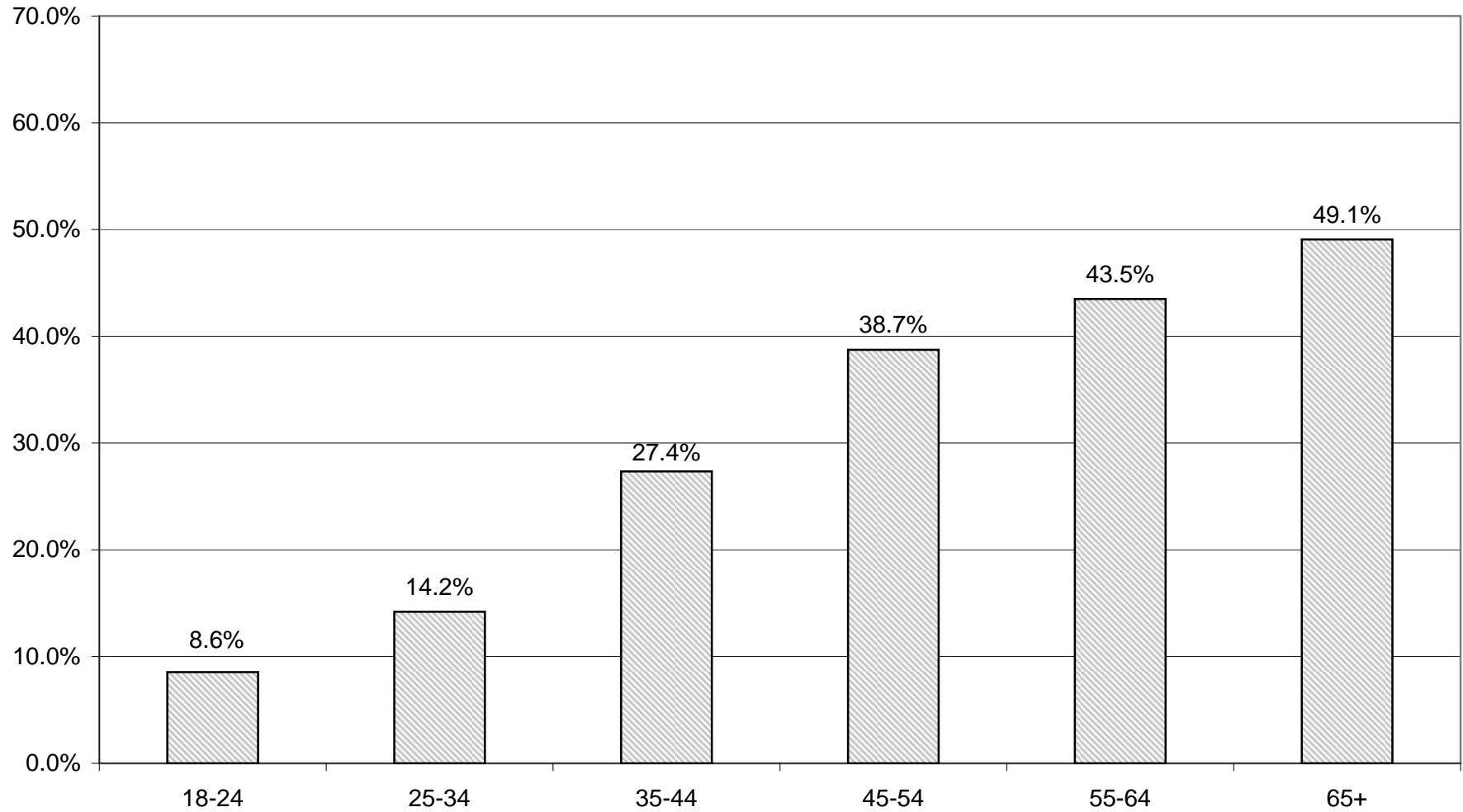
LT/LD SUMMARY
Part 2 of 2

LEGISLATIVE DISTRICT OR TOWN CITY	45-54			55-64			65+		
	VOTED	REGISTERED	TURNOUT	VOTED	REGISTERED	TURNOUT	VOTED	REGISTERED	TURNOUT
Leg. Dist. 06	117	196	59.69 %	56	97	57.73 %	56	98	57.14 %
Leg. Dist. 07	45	89	50.56 %	35	62	56.45 %	31	46	67.39 %
Leg. Dist. 21	221	512	43.16 %	164	303	54.13 %	104	213	48.83 %
Leg. Dist. 22	53	266	19.92 %	38	151	25.17 %	24	77	31.17 %
Leg. Dist. 23	303	465	65.16 %	239	387	61.76 %	146	234	62.39 %
Leg. Dist. 24	170	310	54.84 %	120	214	56.07 %	116	210	55.24 %
Leg. Dist. 25	99	251	39.44 %	76	167	45.51 %	51	155	32.90 %
Leg. Dist. 26	153	328	46.65 %	98	190	51.58 %	49	108	45.37 %
Leg. Dist. 27	176	382	46.07 %	120	261	45.98 %	59	140	42.14 %
Leg. Dist. 28	139	374	37.17 %	95	226	42.04 %	65	156	41.67 %
Leg. Dist. 29	137	408	33.58 %	116	272	42.65 %	78	200	39.00 %
TOTAL:	1,613	3,581	45.04 %	1,157	2,330	49.66 %	779	1,637	47.59 %
TOWNS									
Brighton	530	1,103	48.05 %	432	820	52.68 %	491	906	54.19 %
Chili	400	1,086	36.83 %	269	647	41.58 %	192	373	51.47 %
Clarkson	85	226	37.61 %	46	104	44.23 %	32	63	50.79 %
East Rochester	104	221	47.06 %	70	147	47.62 %	63	106	59.43 %
Gates	307	886	34.65 %	236	576	40.97 %	305	584	52.23 %
Greece	1,182	3,747	31.55 %	855	2,400	35.63 %	712	1,621	43.92 %
Hamlin	126	336	37.50 %	66	174	37.93 %	32	70	45.71 %
Henrietta	319	1,092	29.21 %	266	741	35.90 %	244	514	47.47 %
Irondequoit	920	2,013	45.70 %	701	1,344	52.16 %	657	1,251	52.52 %
Mendon	262	410	63.90 %	162	268	60.45 %	81	132	61.36 %
Ogden	302	842	35.87 %	177	448	39.51 %	113	234	48.29 %
Parma	196	690	28.41 %	158	411	38.44 %	66	197	33.50 %
Penfield	597	1,633	36.56 %	458	1,125	40.71 %	334	762	43.83 %
Perinton	682	1,973	34.57 %	619	1,548	39.99 %	456	968	47.11 %
Pittsford	401	1,102	36.39 %	351	882	39.80 %	394	736	53.53 %
Riga	170	250	68.00 %	83	142	58.45 %	55	78	70.51 %
Rush	80	194	41.24 %	68	133	51.13 %	35	62	56.45 %
Sweden	149	384	38.80 %	108	237	45.57 %	47	117	40.17 %
Webster	742	1,854	40.02 %	563	1,232	45.70 %	451	849	53.12 %
Wheatland	60	192	31.25 %	37	113	32.74 %	26	79	32.91 %
TOTAL:	7,614	20,234	37.63 %	5,725	13,492	42.43 %	4,786	9,702	49.33 %
GRAND TOTAL:	9,227	23,815	38.74 %	6,882	15,822	43.50 %	5,565	11,339	49.08 %

BLANKS TURNOUT - TOTAL AND GENDER 2005 GENERAL ELECTION

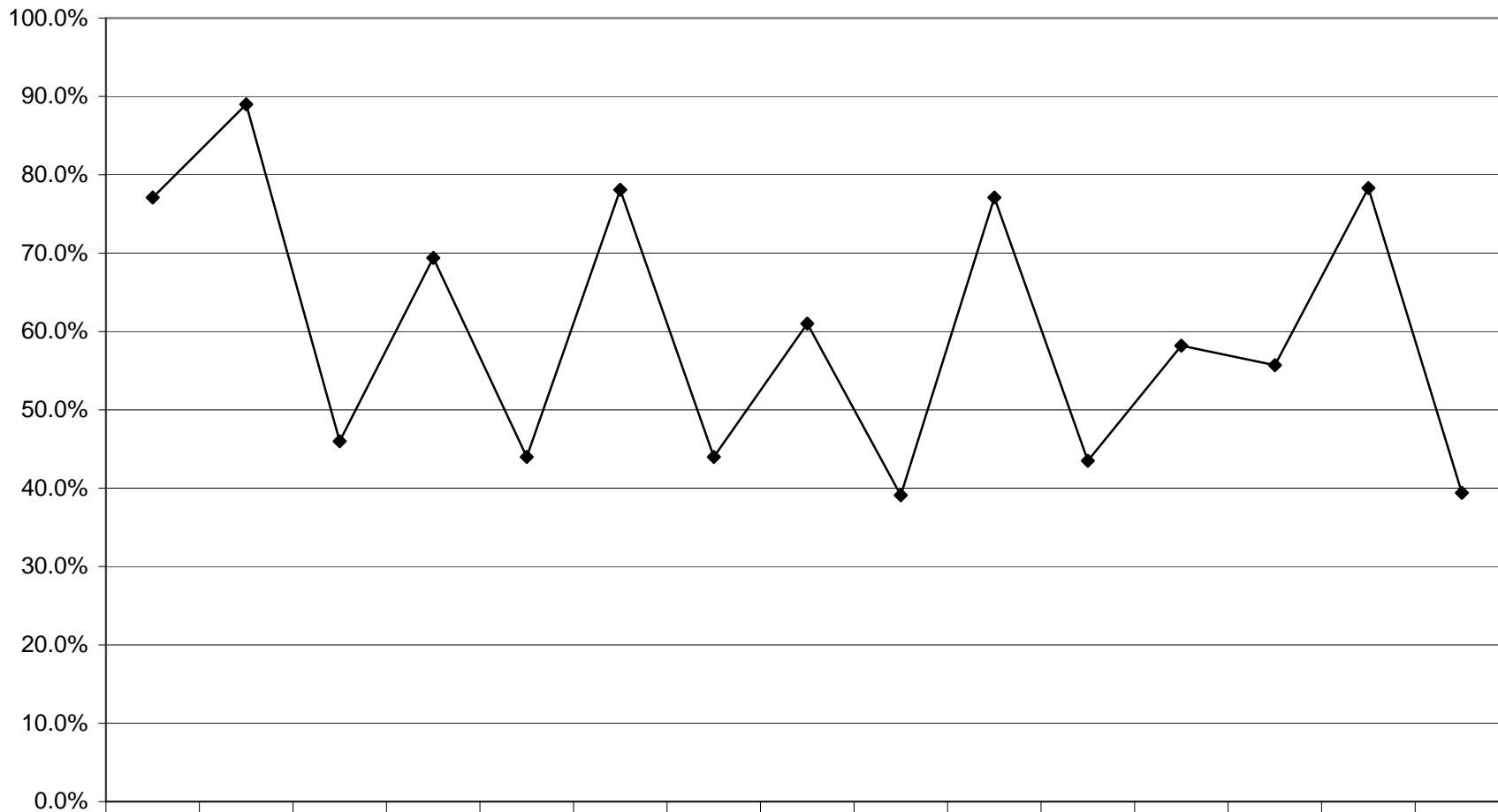


BLANKS TURNOUT BY AGE GROUP 2005 GENERAL ELECTION



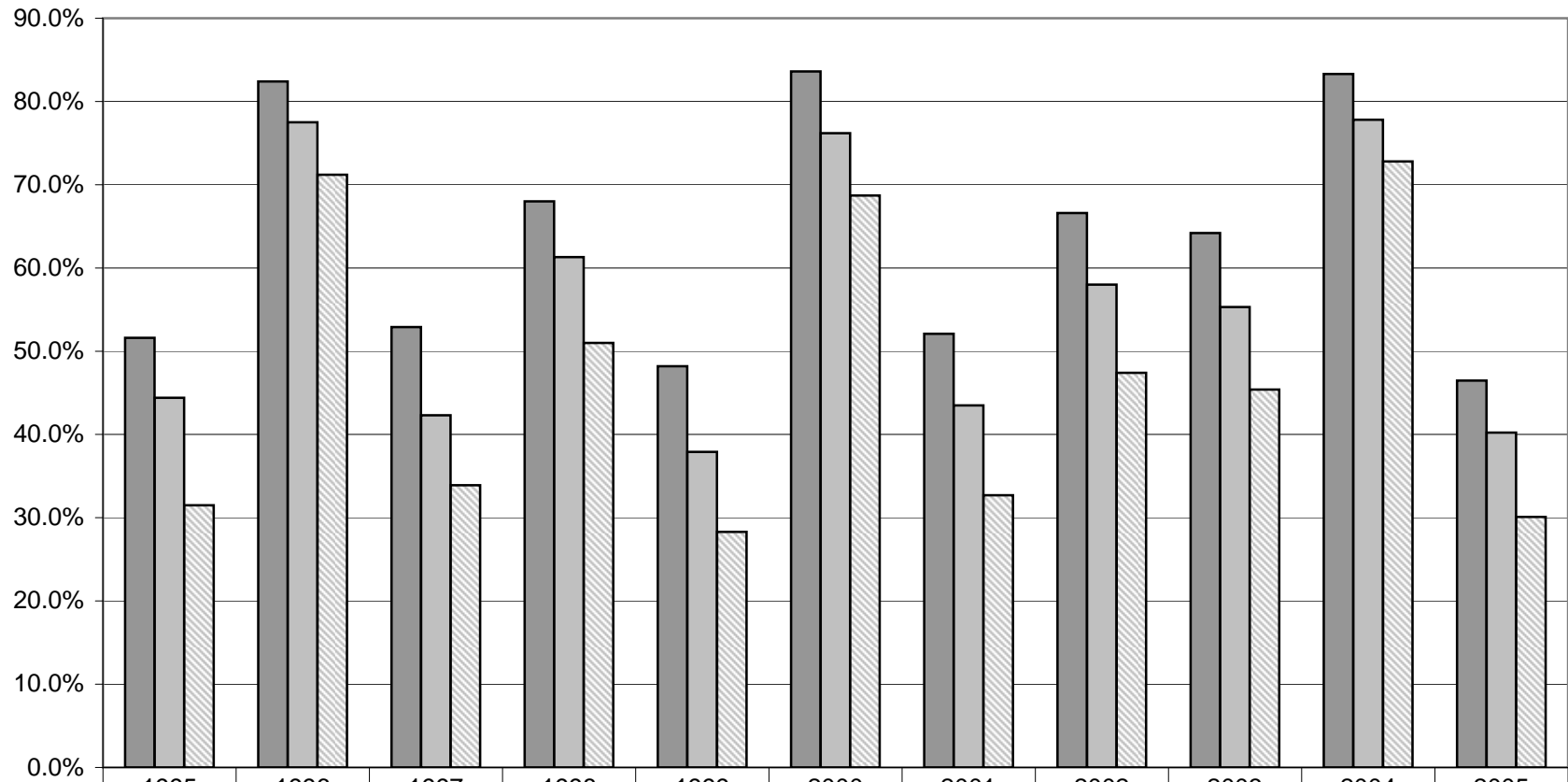
HISTORIC DATA

VOTER TURNOUT FOR THE GENERAL ELECTION 1991 Through 2005



—◆— Turnout	77.1%	89.0%	46.0%	69.4%	44.0%	78.1%	44.0%	61.0%	39.1%	77.1%	43.5%	58.2%	55.7%	78.3%	39.4%
-------------	-------	-------	-------	-------	-------	-------	-------	-------	-------	-------	-------	-------	-------	-------	-------

VOTER TURNOUT BY PARTY 1995 Through 2005 General Elections



	1995	1996	1997	1998	1999	2000	2001	2002	2003	2004	2005
■ Republicans	51.6%	82.4%	52.9%	68.0%	48.2%	83.6%	52.1%	66.6%	64.2%	83.3%	46.5%
■ Democrats	44.4%	77.5%	42.3%	61.3%	37.9%	76.2%	43.5%	58.0%	55.3%	77.8%	40.2%
▨ Blanks	31.5%	71.2%	33.9%	51.0%	28.3%	68.7%	32.7%	47.4%	45.4%	72.8%	30.1%