



# **VOTER TURNOUT SUMMARY REPORT 2022 PRIMARY ELECTION**

Monroe County Board of Elections  
39 W Main Street, Rochester NY 14614

**July 20, 2022**

Jackie Ortiz  
Commissioner of Elections

Lisa P Nicolay  
Commissioner of Elections



**2022 Primary Election  
Turnout by Age  
Part 1 of 2**



	No Date of Birth			18-24			25-34			35-44		
	Voted	Registered	Turnout	Voted	Registered	Turnout	Voted	Registered	Turnout	Voted	Registered	Turnout
Legislative District 7	0	4	0.0%	0	37	0.0%	7	93	7.5%	10	103	9.7%
Legislative District 16	0	0	0.0%	0	0	0.0%	0	0	0.0%	0	0	0.0%
Legislative District 21	2	20	10.0%	28	531	5.3%	195	2,081	9.4%	201	1,736	11.6%
Legislative District 22	0	8	0.0%	14	565	2.5%	48	1,517	3.2%	58	1,466	4.0%
Legislative District 23	1	9	11.1%	49	474	10.3%	328	2,701	12.1%	328	1,591	20.6%
Legislative District 24	0	11	0.0%	31	292	10.6%	264	1,679	15.7%	221	1,080	20.5%
Legislative District 25	0	23	0.0%	20	762	2.6%	168	1,914	8.8%	123	1,535	8.0%
Legislative District 26	0	17	0.0%	18	370	4.9%	54	1,100	4.9%	90	1,143	7.9%
Legislative District 27	1	13	7.7%	30	851	3.5%	100	2,049	4.9%	158	1,981	8.0%
Legislative District 28	0	8	0.0%	7	638	1.1%	21	1,443	1.5%	33	1,358	2.4%
Legislative District 29	0	11	0.0%	11	568	1.9%	40	1,444	2.8%	73	1,439	5.1%
<b>CITY Total</b>	<b>4</b>	<b>124</b>	<b>3.2%</b>	<b>208</b>	<b>5,088</b>	<b>4.1%</b>	<b>1,225</b>	<b>16,021</b>	<b>7.6%</b>	<b>1,295</b>	<b>13,432</b>	<b>9.6%</b>
Brighton	3	23	13.0%	147	1,278	11.5%	278	2,625	10.6%	376	2,550	14.7%
Chili	4	55	7.3%	54	845	6.4%	128	1,895	6.8%	180	1,993	9.0%
Clarkson	0	5	0.0%	12	234	5.1%	32	416	7.7%	32	393	8.1%
East Rochester	0	15	0.0%	4	114	3.5%	22	446	4.9%	34	391	8.7%
Gates	0	15	0.0%	40	731	5.5%	120	1,912	6.3%	141	1,888	7.5%
Greece	6	144	4.2%	153	2,736	5.6%	292	5,748	5.1%	368	6,084	6.0%
Hamlin	0	5	0.0%	17	226	7.5%	34	481	7.1%	71	541	13.1%
Henrietta	0	16	0.0%	74	1,347	5.5%	203	2,737	7.4%	223	2,566	8.7%
Irondequoit	1	76	1.3%	74	1,314	5.6%	273	3,716	7.3%	399	3,847	10.4%
Mendon	0	5	0.0%	18	392	4.6%	40	559	7.2%	54	653	8.3%
Ogden	7	22	31.8%	48	646	7.4%	58	1,199	4.8%	119	1,414	8.4%
Parma	0	11	0.0%	31	429	7.2%	61	869	7.0%	68	1,128	6.0%
Penfield	1	38	2.6%	84	1,234	6.8%	154	2,228	6.9%	222	2,907	7.6%
Perinton	3	24	12.5%	112	1,574	7.1%	185	2,975	6.2%	290	3,354	8.6%
Pittsford	1	18	5.6%	98	1,276	7.7%	85	1,639	5.2%	180	1,991	9.0%
Riga	1	5	20.0%	14	171	8.2%	17	326	5.2%	31	332	9.3%
Rush	0	6	0.0%	5	112	4.5%	9	198	4.5%	28	226	12.4%
Sweden	0	2	0.0%	19	458	4.1%	44	653	6.7%	53	664	8.0%
Webster	2	48	4.2%	85	1,343	6.3%	122	2,449	5.0%	227	2,981	7.6%
Wheatland	0	4	0.0%	10	132	7.6%	21	360	5.8%	37	349	10.6%
<b>TOWNS Total</b>	<b>29</b>	<b>537</b>	<b>5.4%</b>	<b>1,099</b>	<b>16,592</b>	<b>6.6%</b>	<b>2,178</b>	<b>33,431</b>	<b>6.5%</b>	<b>3,133</b>	<b>36,252</b>	<b>8.6%</b>
<b>GRAND Total</b>	<b>33</b>	<b>661</b>	<b>5.0%</b>	<b>1,307</b>	<b>21,680</b>	<b>6.0%</b>	<b>3,403</b>	<b>49,452</b>	<b>6.9%</b>	<b>4,428</b>	<b>49,684</b>	<b>8.9%</b>



**2022 Primary Election  
Turnout by Age  
Part 2 of 2**



	45-54			55-64			65 +		
	Voted	Registered	Turnout	Voted	Registered	Turnout	Voted	Registered	Turnout
Legislative District 7	7	89	7.9%	48	187	25.7%	102	328	31.1%
Legislative District 16	0	0	0.0%	0	1	0.0%	0	8	0.0%
Legislative District 21	178	1,488	12.0%	352	1,652	21.3%	645	2,099	30.7%
Legislative District 22	67	1,367	4.9%	162	1,634	9.9%	336	1,922	17.5%
Legislative District 23	207	1,046	19.8%	388	1,394	27.8%	1,068	2,275	46.9%
Legislative District 24	157	711	22.1%	285	870	32.8%	578	1,276	45.3%
Legislative District 25	100	1,333	7.5%	256	1,681	15.2%	593	2,152	27.6%
Legislative District 26	95	1,066	8.9%	187	1,168	16.0%	371	1,412	26.3%
Legislative District 27	166	1,797	9.2%	391	2,136	18.3%	835	2,646	31.6%
Legislative District 28	84	1,389	6.0%	148	1,462	10.1%	299	1,519	19.7%
Legislative District 29	95	1,505	6.3%	225	1,783	12.6%	549	2,415	22.7%
<b>CITY Total</b>	<b>1,156</b>	<b>11,791</b>	<b>9.8%</b>	<b>2,442</b>	<b>13,968</b>	<b>17.5%</b>	<b>5,376</b>	<b>18,052</b>	<b>29.8%</b>
Brighton	441	2,438	18.1%	577	2,596	22.2%	1,969	5,439	36.2%
Chili	212	1,922	11.0%	482	2,593	18.6%	1,145	4,080	28.1%
Clarkson	63	482	13.1%	115	575	20.0%	274	889	30.8%
East Rochester	30	365	8.2%	73	466	15.7%	154	684	22.5%
Gates	168	1,800	9.3%	395	2,493	15.8%	1,051	4,392	23.9%
Greece	460	5,917	7.8%	1,179	7,990	14.8%	3,326	14,419	23.1%
Hamlin	58	508	11.4%	151	793	19.0%	361	1,174	30.7%
Henrietta	275	2,481	11.1%	563	3,195	17.6%	1,523	5,215	29.2%
Irondequoit	354	3,369	10.5%	785	4,318	18.2%	1,994	7,472	26.7%
Mendon	87	736	11.8%	192	1,086	17.7%	408	1,388	29.4%
Ogden	160	1,473	10.9%	328	1,817	18.1%	781	2,770	28.2%
Parma	115	1,063	10.8%	249	1,379	18.1%	642	2,264	28.4%
Penfield	339	2,895	11.7%	623	3,460	18.0%	1,721	6,124	28.1%
Perinton	376	3,446	10.9%	766	4,434	17.3%	2,438	8,202	29.7%
Pittsford	251	2,337	10.7%	422	2,552	16.5%	1,415	4,727	29.9%
Riga	56	373	15.0%	135	627	21.5%	300	972	30.9%
Rush	28	224	12.5%	112	454	24.7%	199	631	31.5%
Sweden	77	650	11.8%	164	815	20.1%	440	1,476	29.8%
Webster	317	3,167	10.0%	745	4,101	18.2%	1,992	7,211	27.6%
Wheatland	35	281	12.5%	84	424	19.8%	215	713	30.2%
<b>TOWNS Total</b>	<b>3,902</b>	<b>35,927</b>	<b>10.9%</b>	<b>8,140</b>	<b>46,168</b>	<b>17.6%</b>	<b>22,348</b>	<b>80,242</b>	<b>27.9%</b>
<b>GRAND Total</b>	<b>5,058</b>	<b>47,718</b>	<b>10.6%</b>	<b>10,582</b>	<b>60,136</b>	<b>17.6%</b>	<b>27,724</b>	<b>98,294</b>	<b>28.2%</b>



## 2022 Primary Election Turnout by Gender



	Total Voters			Males			Females			Undeclared		
	Voted	Registered	Turnout	Voted	Registered	Turnout	Voted	Registered	Turnout	Voted	Registered	Turnout
Legislative District 7	174	841	20.7%	76	379	20.1%	98	462	21.2%	0	0	0.0
Legislative District 16	0	9	0.0%	0	4	0.0%	0	5	0.0%	0	0	0.0
Legislative District 21	1,601	9,607	16.7%	642	4,041	15.9%	959	5,556	17.3%	0	10	0.0
Legislative District 22	685	8,479	8.1%	272	3,564	7.6%	413	4,889	8.4%	0	26	0.0
Legislative District 23	2,369	9,490	25.0%	1,074	4,453	24.1%	1,293	5,028	25.7%	2	9	22.2
Legislative District 24	1,536	5,919	26.0%	697	2,700	25.8%	837	3,199	26.2%	2	20	10.0
Legislative District 25	1,260	9,400	13.4%	518	4,050	12.8%	740	5,315	13.9%	2	35	5.7
Legislative District 26	815	6,276	13.0%	318	2,631	12.1%	497	3,639	13.7%	0	6	0.0
Legislative District 27	1,681	11,473	14.7%	607	4,695	12.9%	1,071	6,762	15.8%	3	16	18.8
Legislative District 28	592	7,817	7.6%	252	3,198	7.9%	339	4,595	7.4%	1	24	4.2
Legislative District 29	993	9,165	10.8%	378	3,866	9.8%	612	5,273	11.6%	3	26	11.5
CITY Total	11,706	78,476	14.9%	4,834	33,581	14.4%	6,859	44,723	15.3%	13	172	7.6
Brighton	3,791	16,949	22.4%	1,508	7,157	21.1%	2,282	9,765	23.4%	1	27	3.7
Chili	2,205	13,383	16.5%	971	6,006	16.2%	1,234	7,364	16.8%	0	13	0.0
Clarkson	528	2,994	17.6%	262	1,433	18.3%	266	1,559	17.1%	0	2	0.0
East Rochester	317	2,481	12.8%	133	1,127	11.8%	184	1,353	13.6%	0	1	0.0
Gates	1,915	13,231	14.5%	871	5,792	15.0%	1,043	7,426	14.0%	1	13	7.7
Greece	5,784	43,038	13.4%	2,591	18,877	13.7%	3,190	24,117	13.2%	3	44	6.8
Hamlin	692	3,728	18.6%	351	1,794	19.6%	341	1,931	17.7%	0	3	0.0
Henrietta	2,861	17,557	16.3%	1,244	7,860	15.8%	1,617	9,681	16.7%	0	16	0.0
Irondequoit	3,880	24,112	16.1%	1,644	10,433	15.8%	2,235	13,662	16.4%	1	17	5.9
Mendon	799	4,819	16.6%	361	2,231	16.2%	438	2,587	16.9%	0	1	0.0
Ogden	1,501	9,341	16.1%	696	4,319	16.1%	805	5,017	16.0%	0	5	0.0
Parma	1,166	7,143	16.3%	536	3,348	16.0%	630	3,791	16.6%	0	4	0.0
Penfield	3,144	18,886	16.6%	1,356	8,415	16.1%	1,786	10,455	17.1%	2	16	12.5
Perinton	4,170	24,009	17.4%	1,838	10,691	17.2%	2,331	13,307	17.5%	1	11	9.1
Pittsford	2,452	14,540	16.9%	1,058	6,549	16.2%	1,391	7,980	17.4%	3	11	27.3
Riga	554	2,806	19.7%	261	1,330	19.6%	293	1,474	19.9%	0	2	0.0
Rush	381	1,851	20.6%	181	864	20.9%	200	986	20.3%	0	1	0.0
Sweden	797	4,718	16.9%	344	2,155	16.0%	453	2,556	17.7%	0	7	0.0
Webster	3,490	21,300	16.4%	1,556	9,464	16.4%	1,934	11,822	16.4%	0	14	0.0
Wheatland	402	2,263	17.8%	186	1,061	17.5%	216	1,200	18.0%	0	2	0.0
TOWNS Total	40,829	249,149	16.4%	17,948	110,906	16.2%	22,869	138,033	16.6%	12	210	5.7
GRAND Total	52,535	327,625	16.0%	22,782	144,487	15.8%	29,728	182,756	16.3%	25	382	6.5%



**2022 Primary Election  
Democratic Turnout by Age  
Part 1 of 2**



	No Date of Birth			18-24			25-34			35-44		
	Voted	Registered	Turnout	Voted	Registered	Turnout	Voted	Registered	Turnout	Voted	Registered	Turnout
Legislative District 7	0	2	0.0%	0	31	0.0%	6	71	8.5%	7	77	9.1%
Legislative District 16	0	0	0.0%	0	0	0.0%	0	0	0.0%	0	0	0.0%
Legislative District 21	0	8	0.0%	27	492	5.5%	189	1,875	10.1%	186	1,572	11.8%
Legislative District 22	0	6	0.0%	14	529	2.6%	46	1,410	3.3%	50	1,357	3.7%
Legislative District 23	0	3	0.0%	46	394	11.7%	309	2,272	13.6%	312	1,345	23.2%
Legislative District 24	0	5	0.0%	29	267	10.9%	254	1,510	16.8%	212	968	21.9%
Legislative District 25	0	10	0.0%	20	720	2.8%	162	1,778	9.1%	118	1,426	8.3%
Legislative District 26	0	3	0.0%	17	311	5.5%	47	943	5.0%	69	947	7.3%
Legislative District 27	1	7	14.3%	28	810	3.5%	98	1,925	5.1%	156	1,859	8.4%
Legislative District 28	0	3	0.0%	6	586	1.0%	15	1,340	1.1%	30	1,242	2.4%
Legislative District 29	0	3	0.0%	11	522	2.1%	35	1,327	2.6%	64	1,300	4.9%
<b>CITY Total</b>	<b>1</b>	<b>50</b>	<b>2.0%</b>	<b>198</b>	<b>4,662</b>	<b>4.2%</b>	<b>1,161</b>	<b>14,451</b>	<b>8.0%</b>	<b>1,204</b>	<b>12,093</b>	<b>10.0%</b>
Brighton	1	3	33.3%	132	1,044	12.6%	245	2,145	11.4%	333	2,049	16.3%
Chili	2	19	10.5%	28	516	5.4%	80	1,128	7.1%	89	1,173	7.6%
Clarkson	0	3	0.0%	4	90	4.4%	12	186	6.5%	8	163	4.9%
East Rochester	0	6	0.0%	3	80	3.8%	12	306	3.9%	25	265	9.4%
Gates	0	4	0.0%	25	496	5.0%	76	1,266	6.0%	90	1,246	7.2%
Greece	1	32	3.1%	78	1,655	4.7%	181	3,662	4.9%	188	3,604	5.2%
Hamlin	0	2	0.0%	6	97	6.2%	13	193	6.7%	17	213	8.0%
Henrietta	0	4	0.0%	48	990	4.8%	159	1,995	8.0%	153	1,784	8.6%
Irondequoit	0	25	0.0%	46	914	5.0%	226	2,727	8.3%	309	2,833	10.9%
Mendon	0	1	0.0%	11	240	4.6%	30	348	8.6%	25	340	7.4%
Ogden	1	6	16.7%	17	302	5.6%	29	602	4.8%	47	678	6.9%
Parma	0	3	0.0%	14	173	8.1%	25	351	7.1%	18	477	3.8%
Penfield	0	9	0.0%	58	788	7.4%	111	1,312	8.5%	143	1,804	7.9%
Perinton	1	7	14.3%	72	995	7.2%	131	1,867	7.0%	202	2,173	9.3%
Pittsford	0	4	0.0%	70	858	8.2%	62	1,103	5.6%	130	1,345	9.7%
Riga	0	0	0.0%	7	84	8.3%	5	122	4.1%	9	132	6.8%
Rush	0	1	0.0%	2	53	3.8%	2	101	2.0%	18	111	16.2%
Sweden	0	2	0.0%	17	280	6.1%	21	342	6.1%	28	335	8.4%
Webster	0	17	0.0%	45	765	5.9%	82	1,434	5.7%	125	1,651	7.6%
Wheatland	0	1	0.0%	6	73	8.2%	9	198	4.5%	18	171	10.5%
<b>TOWNS Total</b>	<b>6</b>	<b>149</b>	<b>4.0%</b>	<b>689</b>	<b>10,493</b>	<b>6.6%</b>	<b>1,511</b>	<b>21,388</b>	<b>7.1%</b>	<b>1,975</b>	<b>22,547</b>	<b>8.8%</b>
<b>GRAND Total</b>	<b>7</b>	<b>199</b>	<b>3.5%</b>	<b>887</b>	<b>15,155</b>	<b>5.9%</b>	<b>2,672</b>	<b>35,839</b>	<b>7.5%</b>	<b>3,179</b>	<b>34,640</b>	<b>9.2%</b>

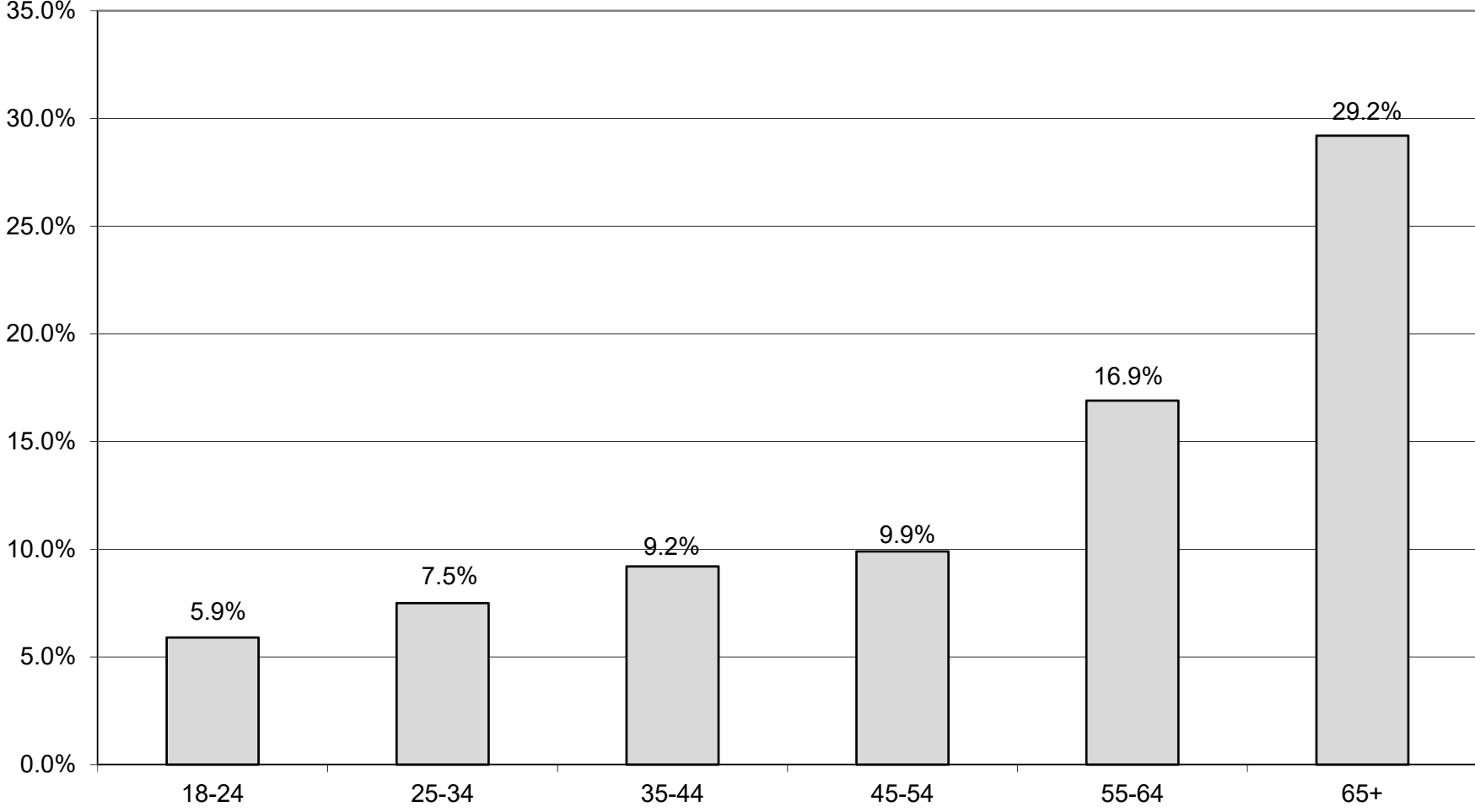


**2022 Primary Election  
Democratic Turnout by Age  
Part 2 of 2**



	45-54			55-64			65 +		
	Voted	Registered	Turnout	Voted	Registered	Turnout	Voted	Registered	Turnout
Legislative District 7	3	65	4.6%	36	123	29.3%	66	217	30.4%
Legislative District 16	0	0	0.0%	0	1	0.0%	0	4	0.0%
Legislative District 21	164	1,315	12.5%	311	1,421	21.9%	564	1,740	32.4%
Legislative District 22	63	1,281	4.9%	151	1,504	10.0%	317	1,771	17.9%
Legislative District 23	185	853	21.7%	328	1,051	31.2%	944	1,809	52.2%
Legislative District 24	147	630	23.3%	256	735	34.8%	521	1,045	49.9%
Legislative District 25	94	1,226	7.7%	236	1,536	15.4%	556	1,948	28.5%
Legislative District 26	69	776	8.9%	127	829	15.3%	245	941	26.0%
Legislative District 27	158	1,678	9.4%	356	1,916	18.6%	777	2,391	32.5%
Legislative District 28	77	1,233	6.2%	126	1,253	10.1%	239	1,221	19.6%
Legislative District 29	78	1,324	5.9%	190	1,578	12.0%	449	2,051	21.9%
<b>CITY Total</b>	<b>1,038</b>	<b>10,381</b>	<b>10.0%</b>	<b>2,117</b>	<b>11,947</b>	<b>17.7%</b>	<b>4,678</b>	<b>15,138</b>	<b>30.9%</b>
Brighton	367	1,836	20.0%	449	1,785	25.2%	1,526	3,695	41.3%
Chili	81	940	8.6%	173	1,142	15.1%	481	1,933	24.9%
Clarkson	13	175	7.4%	31	177	17.5%	98	322	30.4%
East Rochester	17	212	8.0%	35	233	15.0%	86	345	24.9%
Gates	81	1,070	7.6%	139	1,245	11.2%	487	2,271	21.4%
Greece	172	3,053	5.6%	426	3,606	11.8%	1,409	6,589	21.4%
Hamlin	8	146	5.5%	27	229	11.8%	86	350	24.6%
Henrietta	143	1,466	9.8%	260	1,631	15.9%	861	2,782	30.9%
Irondequoit	229	2,210	10.4%	438	2,552	17.2%	1,235	4,421	27.9%
Mendon	31	333	9.3%	76	450	16.9%	186	601	30.9%
Ogden	43	602	7.1%	76	640	11.9%	255	1,076	23.7%
Parma	32	360	8.9%	58	427	13.6%	200	835	24.0%
Penfield	170	1,479	11.5%	272	1,506	18.1%	896	3,042	29.5%
Perinton	203	1,844	11.0%	370	1,995	18.5%	1,288	3,951	32.6%
Pittsford	136	1,326	10.3%	242	1,257	19.3%	877	2,517	34.8%
Riga	7	129	5.4%	25	181	13.8%	91	313	29.1%
Rush	10	100	10.0%	31	166	18.7%	65	258	25.2%
Sweden	31	294	10.5%	56	289	19.4%	214	659	32.5%
Webster	125	1,524	8.2%	297	1,728	17.2%	961	3,519	27.3%
Wheatland	7	130	5.4%	26	168	15.5%	86	316	27.2%
<b>TOWNS Total</b>	<b>1,906</b>	<b>19,229</b>	<b>9.9%</b>	<b>3,507</b>	<b>21,407</b>	<b>16.4%</b>	<b>11,388</b>	<b>39,795</b>	<b>28.6%</b>
<b>GRAND Total</b>	<b>2,944</b>	<b>29,610</b>	<b>9.9%</b>	<b>5,624</b>	<b>33,354</b>	<b>16.9%</b>	<b>16,066</b>	<b>54,933</b>	<b>29.2%</b>

# DEMOCRATIC TURNOUT BY AGE GROUP 2022 PRIMARY ELECTION





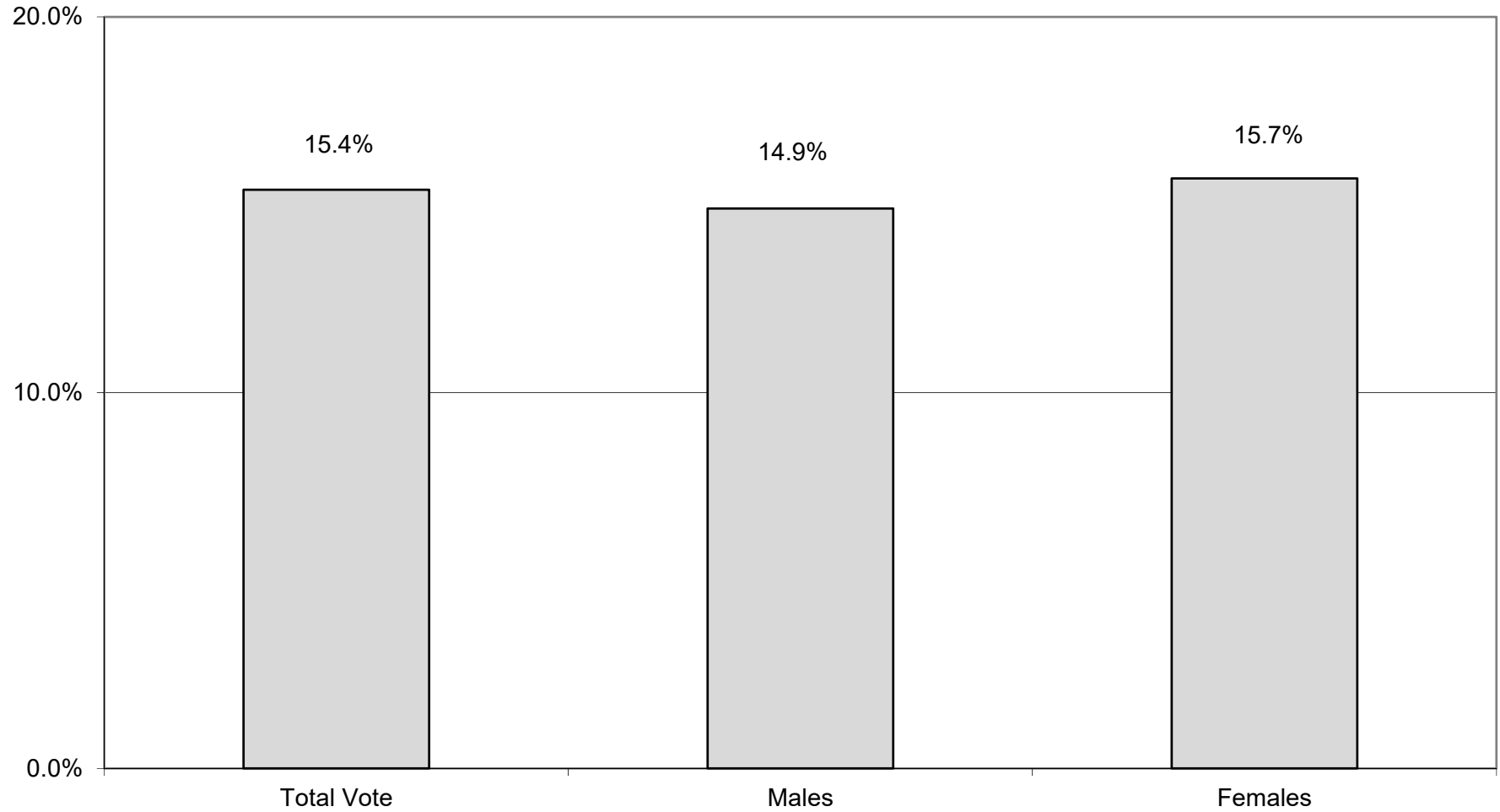
## 2022 Primary Election Democratic Turnout by Gender



	Total Voters			Males			Females			Undeclared		
	Voted	Registered	Turnout	Voted	Registered	Turnout	Voted	Registered	Turnout	Voted	Registered	Turnout
Legislative District 7	118	586	20.1%	47	252	18.7%	71	334	21.3%	0	0	0.0%
Legislative District 16	0	5	0.0%	0	2	0.0%	0	3	0.0%	0	0	0.0%
Legislative District 21	1,441	8,423	17.1%	557	3,381	16.5%	884	5,033	17.6%	0	9	0.0%
Legislative District 22	641	7,858	8.2%	251	3,236	7.8%	390	4,599	8.5%	0	23	0.0%
Legislative District 23	2,124	7,727	27.5%	935	3,427	27.3%	1,187	4,293	27.6%	2	7	28.6%
Legislative District 24	1,419	5,160	27.5%	636	2,274	28.0%	781	2,868	27.2%	2	18	11.1%
Legislative District 25	1,186	8,644	13.7%	483	3,632	13.3%	701	4,979	14.1%	2	33	6.1%
Legislative District 26	574	4,750	12.1%	197	1,822	10.8%	377	2,922	12.9%	0	6	0.0%
Legislative District 27	1,574	10,586	14.9%	553	4,193	13.2%	1,018	6,377	16.0%	3	16	18.8%
Legislative District 28	493	6,878	7.2%	194	2,665	7.3%	299	4,192	7.1%	0	21	0.0%
Legislative District 29	827	8,105	10.2%	300	3,291	9.1%	525	4,790	11.0%	2	24	8.3%
<b>CITY Total</b>	<b>10,397</b>	<b>68,722</b>	<b>15.1%</b>	<b>4,153</b>	<b>28,175</b>	<b>14.7%</b>	<b>6,233</b>	<b>40,390</b>	<b>15.4%</b>	<b>11</b>	<b>157</b>	<b>7.0%</b>
Brighton	3,053	12,557	24.3%	1,154	4,927	23.4%	1,898	7,609	24.9%	1	21	4.8%
Chili	934	6,851	13.6%	331	2,645	12.5%	603	4,198	14.4%	0	8	0.0%
Clarkson	166	1,116	14.9%	70	441	15.9%	96	675	14.2%	0	0	0.0%
East Rochester	178	1,447	12.3%	64	586	10.9%	114	861	13.2%	0	0	0.0%
Gates	898	7,598	11.8%	335	2,894	11.6%	562	4,695	12.0%	1	9	11.1%
Greece	2,455	22,201	11.1%	911	8,270	11.0%	1,544	13,905	11.1%	0	26	0.0%
Hamlin	157	1,230	12.8%	54	440	12.3%	103	789	13.1%	0	1	0.0%
Henrietta	1,624	10,652	15.2%	579	4,237	13.7%	1,045	6,402	16.3%	0	13	0.0%
Irondequoit	2,483	15,682	15.8%	919	5,991	15.3%	1,564	9,681	16.2%	0	10	0.0%
Mendon	359	2,313	15.5%	129	858	15.0%	230	1,454	15.8%	0	1	0.0%
Ogden	468	3,906	12.0%	170	1,482	11.5%	298	2,422	12.3%	0	2	0.0%
Parma	347	2,626	13.2%	107	968	11.1%	240	1,657	14.5%	0	1	0.0%
Penfield	1,650	9,940	16.6%	592	3,727	15.9%	1,057	6,205	17.0%	1	8	12.5%
Perinton	2,267	12,832	17.7%	844	4,873	17.3%	1,422	7,950	17.9%	1	9	11.1%
Pittsford	1,517	8,410	18.0%	587	3,287	17.9%	927	5,115	18.1%	3	8	37.5%
Riga	144	961	15.0%	54	376	14.4%	90	585	15.4%	0	0	0.0%
Rush	128	790	16.2%	48	310	15.5%	80	480	16.7%	0	0	0.0%
Sweden	367	2,201	16.7%	126	847	14.9%	241	1,348	17.9%	0	6	0.0%
Webster	1,635	10,638	15.4%	593	3,925	15.1%	1,042	6,704	15.5%	0	9	0.0%
Wheatland	152	1,057	14.4%	57	418	13.6%	95	637	14.9%	0	2	0.0%
<b>TOWNS Total</b>	<b>20,982</b>	<b>135,008</b>	<b>15.5%</b>	<b>7,724</b>	<b>51,502</b>	<b>15.0%</b>	<b>13,251</b>	<b>83,372</b>	<b>15.9%</b>	<b>7</b>	<b>134</b>	<b>5.2%</b>
<b>GRAND Total</b>	<b>31,379</b>	<b>203,730</b>	<b>15.4%</b>	<b>11,877</b>	<b>79,677</b>	<b>14.9%</b>	<b>19,484</b>	<b>123,762</b>	<b>15.7%</b>	<b>18</b>	<b>291</b>	<b>6.19%</b>



## DEMOCRATIC TURNOUT - TOTAL AND GENDER 2022 PRIMARY ELECTION





**2022 Primary Election  
Republican Turnout by Age  
Part 1 of 2**



	No Date of Birth			18-24			25-34			35-44		
	Voted	Registered	Turnout	Voted	Registered	Turnout	Voted	Registered	Turnout	Voted	Registered	Turnout
Legislative District 7	0	2	0.0%	0	6	0.0%	1	22	4.5%	3	26	11.5%
Legislative District 16	0	0	0.0%	0	0	0.0%	0	0	0.0%	0	0	0.0%
Legislative District 21	2	12	16.7%	1	39	2.6%	6	206	2.9%	15	164	9.1%
Legislative District 22	0	2	0.0%	0	36	0.0%	2	107	1.9%	8	109	7.3%
Legislative District 23	1	6	16.7%	3	80	3.8%	19	429	4.4%	16	246	6.5%
Legislative District 24	0	6	0.0%	2	25	8.0%	10	169	5.9%	9	112	8.0%
Legislative District 25	0	13	0.0%	0	42	0.0%	6	136	4.4%	5	109	4.6%
Legislative District 26	0	14	0.0%	1	59	1.7%	7	157	4.5%	21	196	10.7%
Legislative District 27	0	6	0.0%	2	41	4.9%	2	124	1.6%	2	122	1.6%
Legislative District 28	0	5	0.0%	1	52	1.9%	6	103	5.8%	3	116	2.6%
Legislative District 29	0	8	0.0%	0	46	0.0%	5	117	4.3%	9	139	6.5%
<b>CITY Total</b>	<b>3</b>	<b>74</b>	<b>4.1%</b>	<b>10</b>	<b>426</b>	<b>2.3%</b>	<b>64</b>	<b>1,570</b>	<b>4.1%</b>	<b>91</b>	<b>1,339</b>	<b>6.8%</b>
Brighton	2	20	10.0%	15	234	6.4%	33	480	6.9%	43	501	8.6%
Chili	2	36	5.6%	26	329	7.9%	48	767	6.3%	91	820	11.1%
Clarkson	0	2	0.0%	8	144	5.6%	20	230	8.7%	24	230	10.4%
East Rochester	0	9	0.0%	1	34	2.9%	10	140	7.1%	9	126	7.1%
Gates	0	11	0.0%	15	235	6.4%	44	646	6.8%	51	642	7.9%
Greece	5	112	4.5%	75	1,081	6.9%	111	2,086	5.3%	180	2,480	7.3%
Hamlin	0	3	0.0%	11	129	8.5%	21	288	7.3%	54	328	16.5%
Henrietta	0	12	0.0%	26	357	7.3%	44	742	5.9%	70	782	9.0%
Irondequoit	1	51	2.0%	28	400	7.0%	47	989	4.8%	90	1,014	8.9%
Mendon	0	4	0.0%	7	152	4.6%	10	211	4.7%	29	313	9.3%
Ogden	6	16	37.5%	31	344	9.0%	29	597	4.9%	72	736	9.8%
Parma	0	8	0.0%	17	256	6.6%	36	518	6.9%	50	651	7.7%
Penfield	1	29	3.4%	26	446	5.8%	43	916	4.7%	79	1,103	7.2%
Perinton	2	17	11.8%	40	579	6.9%	54	1,108	4.9%	88	1,181	7.5%
Pittsford	1	14	7.1%	28	418	6.7%	23	536	4.3%	50	646	7.7%
Riga	1	5	20.0%	7	87	8.0%	12	204	5.9%	22	200	11.0%
Rush	0	5	0.0%	3	59	5.1%	7	97	7.2%	10	115	8.7%
Sweden	0	0	0.0%	2	178	1.1%	23	311	7.4%	25	329	7.6%
Webster	2	31	6.5%	40	578	6.9%	40	1,015	3.9%	102	1,330	7.7%
Wheatland	0	3	0.0%	4	59	6.8%	12	162	7.4%	19	178	10.7%
<b>TOWNS Total</b>	<b>23</b>	<b>388</b>	<b>5.9%</b>	<b>410</b>	<b>6,099</b>	<b>6.7%</b>	<b>667</b>	<b>12,043</b>	<b>5.5%</b>	<b>1,158</b>	<b>13,705</b>	<b>8.4%</b>
<b>GRAND Total</b>	<b>26</b>	<b>462</b>	<b>5.6%</b>	<b>420</b>	<b>6,525</b>	<b>6.4%</b>	<b>731</b>	<b>13,613</b>	<b>5.4%</b>	<b>1,249</b>	<b>15,044</b>	<b>8.3%</b>

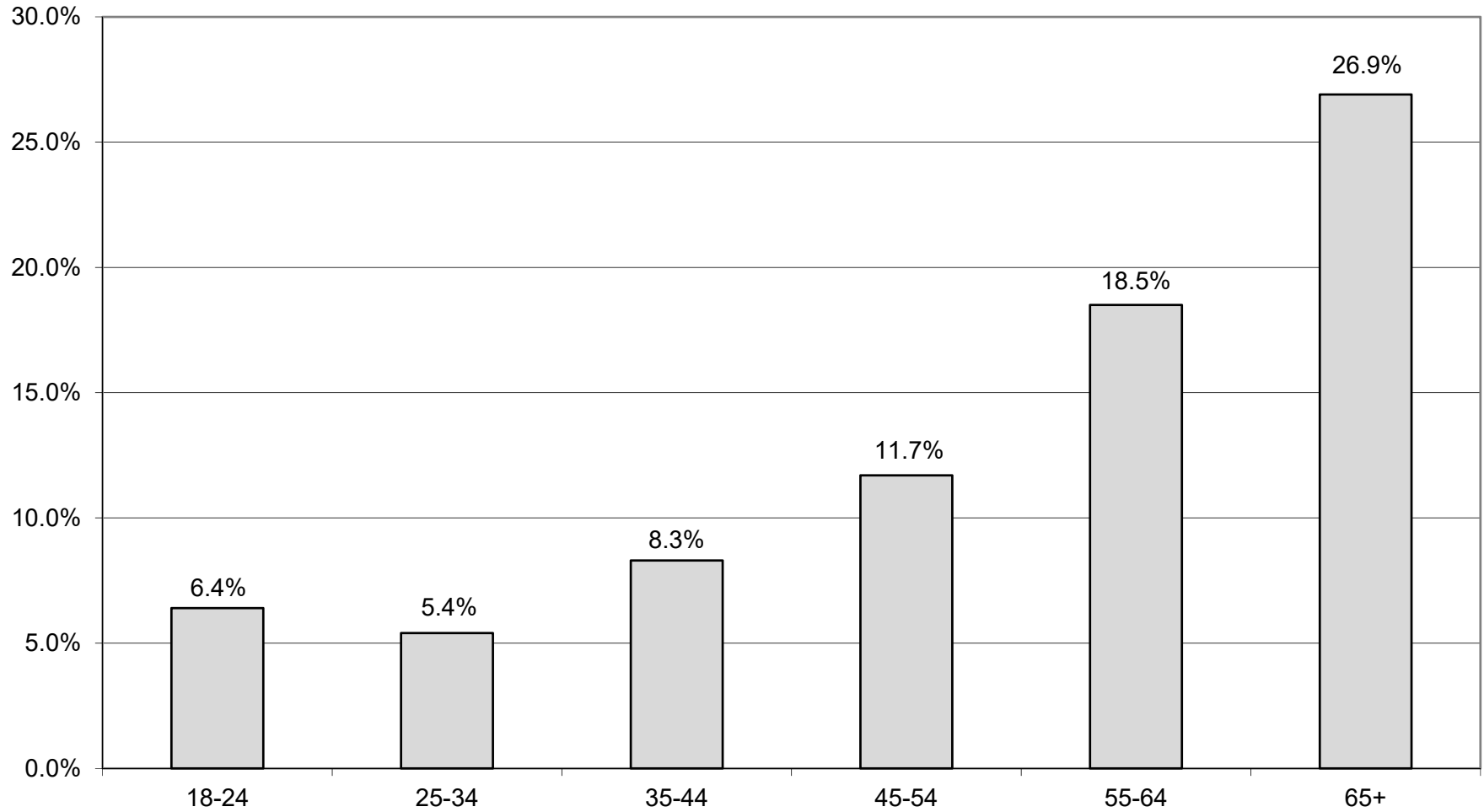


**2022 Primary Election  
Republican Turnout by Age  
Part 2 of 2**



	45-54			55-64			65 +		
	Voted	Registered	Turnout	Voted	Registered	Turnout	Voted	Registered	Turnout
Legislative District 7	4	24	16.7%	12	64	18.8%	36	111	32.4%
Legislative District 16	0	0	0.0%	0	0	0.0%	0	4	0.0%
Legislative District 21	14	173	8.1%	41	231	17.7%	81	359	22.6%
Legislative District 22	4	86	4.7%	11	130	8.5%	19	151	12.6%
Legislative District 23	22	193	11.4%	60	343	17.5%	124	466	26.6%
Legislative District 24	10	81	12.3%	29	135	21.5%	57	231	24.7%
Legislative District 25	6	107	5.6%	20	145	13.8%	37	204	18.1%
Legislative District 26	26	290	9.0%	60	339	17.7%	126	471	26.8%
Legislative District 27	8	119	6.7%	35	220	15.9%	58	255	22.7%
Legislative District 28	7	156	4.5%	22	209	10.5%	60	298	20.1%
Legislative District 29	17	181	9.4%	35	205	17.1%	100	364	27.5%
<b>CITY Total</b>	<b>118</b>	<b>1,410</b>	<b>8.4%</b>	<b>325</b>	<b>2,021</b>	<b>16.1%</b>	<b>698</b>	<b>2,914</b>	<b>24.0%</b>
Brighton	74	602	12.3%	128	811	15.8%	443	1,744	25.4%
Chili	131	982	13.3%	309	1,451	21.3%	664	2,147	30.9%
Clarkson	50	307	16.3%	84	398	21.1%	176	567	31.0%
East Rochester	13	153	8.5%	38	233	16.3%	68	339	20.1%
Gates	87	730	11.9%	256	1,248	20.5%	564	2,121	26.6%
Greece	288	2,864	10.1%	753	4,384	17.2%	1,917	7,830	24.5%
Hamlin	50	362	13.8%	124	564	22.0%	275	824	33.4%
Henrietta	132	1,015	13.0%	303	1,564	19.4%	662	2,433	27.2%
Irondequoit	125	1,159	10.8%	347	1,766	19.6%	759	3,051	24.9%
Mendon	56	403	13.9%	116	636	18.2%	222	787	28.2%
Ogden	117	871	13.4%	252	1,177	21.4%	526	1,694	31.1%
Parma	83	703	11.8%	191	952	20.1%	442	1,429	30.9%
Penfield	169	1,416	11.9%	351	1,954	18.0%	825	3,082	26.8%
Perinton	173	1,602	10.8%	396	2,439	16.2%	1,150	4,251	27.1%
Pittsford	115	1,011	11.4%	180	1,295	13.9%	538	2,210	24.3%
Riga	49	244	20.1%	110	446	24.7%	209	659	31.7%
Rush	18	124	14.5%	81	288	28.1%	134	373	35.9%
Sweden	46	356	12.9%	108	526	20.5%	226	817	27.7%
Webster	192	1,643	11.7%	448	2,373	18.9%	1,031	3,692	27.9%
Wheatland	28	151	18.5%	58	256	22.7%	129	397	32.5%
<b>TOWNS Total</b>	<b>1,996</b>	<b>16,698</b>	<b>12.0%</b>	<b>4,633</b>	<b>24,761</b>	<b>18.7%</b>	<b>10,960</b>	<b>40,447</b>	<b>27.1%</b>
<b>GRAND Total</b>	<b>2,114</b>	<b>18,108</b>	<b>11.7%</b>	<b>4,958</b>	<b>26,782</b>	<b>18.5%</b>	<b>11,658</b>	<b>43,361</b>	<b>26.9%</b>

## REPUBLICAN TURNOUT BY AGE GROUP 2022 PRIMARY ELECTION





## 2022 Primary Election Republican Turnout by Gender



	Total Voters			Males			Females			Undeclared		
	Voted	Registered	Turnout	Voted	Registered	Turnout	Voted	Registered	Turnout	Voted	Registered	Turnout
Legislative District 7	56	255	22.0%	29	127	22.8%	27	128	21.1%	0	0	0.0%
Legislative District 16	0	4	0.0%	0	2	0.0%	0	2	0.0%	0	0	0.0%
Legislative District 21	160	1,184	13.5%	85	660	12.9%	75	523	14.3%	0	1	0.0%
Legislative District 22	44	621	7.1%	21	328	6.4%	23	290	7.9%	0	3	0.0%
Legislative District 23	245	1,763	13.9%	139	1,026	13.5%	106	735	14.4%	0	2	0.0%
Legislative District 24	117	759	15.4%	61	426	14.3%	56	331	16.9%	0	2	0.0%
Legislative District 25	74	756	9.8%	35	418	8.4%	39	336	11.6%	0	2	0.0%
Legislative District 26	241	1,526	15.8%	121	809	15.0%	120	717	16.7%	0	0	0.0%
Legislative District 27	107	887	12.1%	54	502	10.8%	53	385	13.8%	0	0	0.0%
Legislative District 28	99	939	10.5%	58	533	10.9%	40	403	9.9%	1	3	33.3%
Legislative District 29	166	1,060	15.7%	78	575	13.6%	87	483	18.0%	1	2	50.0%
<b>CITY Total</b>	<b>1,309</b>	<b>9,754</b>	<b>13.4%</b>	<b>681</b>	<b>5,406</b>	<b>12.6%</b>	<b>626</b>	<b>4,333</b>	<b>14.4%</b>	<b>2</b>	<b>15</b>	<b>13.3%</b>
Brighton	738	4,392	16.8%	354	2,230	15.9%	384	2,156	17.8%	0	6	0.0%
Chili	1,271	6,532	19.5%	640	3,361	19.0%	631	3,166	19.9%	0	5	0.0%
Clarkson	362	1,878	19.3%	192	992	19.4%	170	884	19.2%	0	2	0.0%
East Rochester	139	1,034	13.4%	69	541	12.8%	70	492	14.2%	0	1	0.0%
Gates	1,017	5,633	18.1%	536	2,898	18.5%	481	2,731	17.6%	0	4	0.0%
Greece	3,329	20,837	16.0%	1,680	10,607	15.8%	1,646	10,212	16.1%	3	18	16.7%
Hamlin	535	2,498	21.4%	297	1,354	21.9%	238	1,142	20.8%	0	2	0.0%
Henrietta	1,237	6,905	17.9%	665	3,623	18.4%	572	3,279	17.4%	0	3	0.0%
Irondequoit	1,397	8,430	16.6%	725	4,442	16.3%	671	3,981	16.9%	1	7	14.3%
Mendon	440	2,506	17.6%	232	1,373	16.9%	208	1,133	18.4%	0	0	0.0%
Ogden	1,033	5,435	19.0%	526	2,837	18.5%	507	2,595	19.5%	0	3	0.0%
Parma	819	4,517	18.1%	429	2,380	18.0%	390	2,134	18.3%	0	3	0.0%
Penfield	1,494	8,946	16.7%	764	4,688	16.3%	729	4,250	17.2%	1	8	12.5%
Perinton	1,903	11,177	17.0%	994	5,818	17.1%	909	5,357	17.0%	0	2	0.0%
Pittsford	935	6,130	15.3%	471	3,262	14.4%	464	2,865	16.2%	0	3	0.0%
Riga	410	1,845	22.2%	207	954	21.7%	203	889	22.8%	0	2	0.0%
Rush	253	1,061	23.8%	133	554	24.0%	120	506	23.7%	0	1	0.0%
Sweden	430	2,517	17.1%	218	1,308	16.7%	212	1,208	17.5%	0	1	0.0%
Webster	1,855	10,662	17.4%	963	5,539	17.4%	892	5,118	17.4%	0	5	0.0%
Wheatland	250	1,206	20.7%	129	643	20.1%	121	563	21.5%	0	0	0.0%
<b>TOWNS Total</b>	<b>19,847</b>	<b>114,141</b>	<b>17.4%</b>	<b>10,224</b>	<b>59,404</b>	<b>17.2%</b>	<b>9,618</b>	<b>54,661</b>	<b>17.6%</b>	<b>5</b>	<b>76</b>	<b>6.6%</b>
<b>GRAND Total</b>	<b>21,156</b>	<b>123,895</b>	<b>17.1%</b>	<b>10,905</b>	<b>64,810</b>	<b>16.8%</b>	<b>10,244</b>	<b>58,994</b>	<b>17.4%</b>	<b>7</b>	<b>91</b>	<b>7.69%</b>

# REPUBLICAN TURNOUT - TOTAL AND GENDER 2022 PRIMARY ELECTION

