



VOTER TURNOUT SUMMARY REPORT 2014 GENERAL ELECTION

Monroe County Board of Elections
39 West Main Street, Rochester, New York 14614

December 5, 2014

Peter M. Quinn
Commissioner of Elections

Thomas F. Ferrarese
Commissioner of Elections

CONTENTS DESCRIPTION

General Summary.....	Page 1
Democratic Summary.....	Page 12
Republican Summary	Page 18
Conservative Summary	Page 24
Working Families Summary.....	Page 30
Independence Summary.....	Page 36
Green Summary.....	Page 42
Blank Summary.....	Page 48
Historical Data.....	Page 54

GENERAL SUMMARY

2014 GENERAL ELECTION
VOTER TURNOUT BY GENDER

LT/LD SUMMARY

LEGISLATIVE DISTRICT OR TOWN	TOTAL VOTERS			MALES			FEMALES		
	VOTED	REGISTERED	TURNOUT	VOTED	REGISTERED	TURNOUT	VOTED	REGISTERED	TURNOUT
CITY									
Leg. Dist. 07	533	1,169	45.59%	253	520	48.65%	280	649	43.14%
Leg. Dist. 16	8	13	61.54%	3	4	75.00%	5	9	55.56%
Leg. Dist. 21	4,789	12,391	38.65%	2,081	5,271	39.48%	2,708	7,120	38.03%
Leg. Dist. 22	2,596	11,165	23.25%	1,069	4,593	23.27%	1,527	6,572	23.23%
Leg. Dist. 23	6,116	11,940	51.22%	3,140	5,845	53.72%	2,976	6,095	48.83%
Leg. Dist. 24	3,503	7,233	48.43%	1,689	3,377	50.01%	1,814	3,856	47.04%
Leg. Dist. 25	3,576	11,500	31.10%	1,575	5,063	31.11%	2,001	6,437	31.09%
Leg. Dist. 26	3,151	8,011	39.33%	1,427	3,396	42.02%	1,724	4,615	37.36%
Leg. Dist. 27	4,777	14,458	33.04%	1,936	6,033	32.09%	2,841	8,425	33.72%
Leg. Dist. 28	2,558	10,178	25.13%	1,159	4,194	27.63%	1,399	5,984	23.38%
Leg. Dist. 29	3,562	11,930	29.86%	1,513	4,937	30.65%	2,049	6,993	29.30%
CITY TOTAL:	35,169	99,988	35.17%	15,845	43,233	36.65%	19,324	56,755	34.05%
TOWNS									
Brighton	11,547	21,850	52.85%	5,229	9,705	53.88%	6,318	12,145	52.02%
Chili	9,022	18,628	48.43%	4,457	8,712	51.16%	4,565	9,916	46.04%
Clarkson	1,969	3,879	50.76%	1,004	1,843	54.48%	965	2,036	47.40%
East Rochester	1,653	3,702	44.65%	771	1,696	45.46%	882	2,006	43.97%
Gates	7,847	17,553	44.70%	3,731	7,841	47.58%	4,116	9,712	42.38%
Greece	27,141	60,917	44.55%	13,279	27,525	48.24%	13,862	33,392	41.51%
Hamlin	2,579	5,247	49.15%	1,352	2,538	53.27%	1,227	2,709	45.29%
Henrietta	10,404	22,108	47.06%	5,075	10,324	49.16%	5,329	11,784	45.22%
Irondequoit	17,350	33,794	51.34%	8,092	15,006	53.93%	9,258	18,788	49.28%
Mendon	3,617	6,458	56.01%	1,845	3,144	58.68%	1,772	3,314	53.47%
Ogden	6,370	12,650	50.36%	3,167	5,892	53.75%	3,203	6,758	47.40%
Parma	4,850	10,238	47.37%	2,466	4,921	50.11%	2,384	5,317	44.84%
Penfield	13,662	25,390	53.81%	6,625	11,813	56.08%	7,037	13,577	51.83%
Perinton	18,454	33,098	55.76%	8,898	15,324	58.07%	9,556	17,774	53.76%
Pittsford	11,122	19,660	56.57%	5,323	9,119	58.37%	5,799	10,541	55.01%
Riga	2,091	3,864	54.11%	1,036	1,829	56.64%	1,055	2,035	51.84%
Rush	1,563	2,552	61.25%	776	1,233	62.94%	787	1,319	59.67%
Sweden	3,093	6,113	50.60%	1,517	2,839	53.43%	1,576	3,274	48.14%
Webster	14,564	28,672	50.80%	7,160	13,225	54.14%	7,404	15,447	47.93%
Wheatland	1,641	3,170	51.77%	827	1,479	55.92%	814	1,691	48.14%
TOWNS TOTAL:	170,539	339,543	50.23%	82,630	156,008	52.97%	87,909	183,535	47.90%
GRAND TOTAL:	205,708	439,531	46.80%	98,475	199,241	49.43%	107,233	240,290	44.63%

2014 GENERAL ELECTION
VOTER TURNOUT BY PARTY

LT/LD SUMMARY
Part 1 of 2

LEGISLATIVE DISTRICT OR TOWN	DEMOCRAT			REPUBLICAN			CONSERVATIVE			WORKING FAMILIES		
	VOTED	REGISTERED	TURNOUT	VOTED	REGISTERED	TURNOUT	VOTED	REGISTERED	TURNOUT	VOTED	REGISTERED	TURNOUT
CITY												
Leg. Dist. 07	203	477	42.56%	165	307	53.75%	15	23	65.22%	3	6	50.00%
Leg. Dist. 16	3	5	60.00%	2	4	50.00%	0	0	0.00%	0	0	0.00%
Leg. Dist. 21	3,052	7,872	38.77%	704	1,399	50.32%	45	89	50.56%	21	77	27.27%
Leg. Dist. 22	2,181	8,360	26.09%	162	588	27.55%	17	54	31.48%	11	92	11.96%
Leg. Dist. 23	3,377	6,121	55.17%	1,126	2,058	54.71%	70	122	57.38%	21	43	48.84%
Leg. Dist. 24	2,085	3,977	52.43%	526	1,018	51.67%	25	55	45.45%	14	33	42.42%
Leg. Dist. 25	2,788	8,438	33.04%	281	776	36.21%	29	55	52.73%	11	68	16.18%
Leg. Dist. 26	1,474	3,997	36.88%	834	1,623	51.39%	100	166	60.24%	12	57	21.05%
Leg. Dist. 27	3,609	10,700	33.73%	498	1,049	47.47%	49	98	50.00%	12	82	14.63%
Leg. Dist. 28	1,661	6,654	24.96%	444	1,091	40.70%	43	93	46.24%	8	93	8.60%
Leg. Dist. 29	2,527	8,080	31.27%	508	1,210	41.98%	47	119	39.50%	9	75	12.00%
CITY TOTAL:	22,960	64,681	35.50%	5,250	11,123	47.20%	440	874	50.34%	122	626	19.49%
TOWNS												
Brighton	5,603	9,919	56.49%	3,097	5,360	57.78%	127	223	56.95%	14	37	37.84%
Chili	2,657	5,851	45.41%	3,902	6,713	58.13%	295	473	62.37%	23	46	50.00%
Clarkson	438	985	44.47%	976	1,626	60.02%	74	117	63.25%	2	13	15.38%
East Rochester	562	1,256	44.75%	589	1,084	54.34%	41	80	51.25%	3	20	15.00%
Gates	2,758	6,590	41.85%	3,035	5,420	56.00%	251	415	60.48%	20	73	27.40%
Greece	7,825	19,275	40.60%	11,663	21,284	54.80%	887	1,610	55.09%	50	213	23.47%
Hamlin	478	1,157	41.31%	1,408	2,330	60.43%	84	146	57.53%	8	20	40.00%
Henrietta	3,545	8,019	44.21%	4,119	7,062	58.33%	270	477	56.60%	12	53	22.64%
Irondequoit	6,674	13,161	50.71%	5,684	9,422	60.33%	424	706	60.06%	24	90	26.67%
Mendon	949	1,765	53.77%	1,692	2,637	64.16%	65	117	55.56%	4	9	44.44%
Ogden	1,489	3,246	45.87%	3,020	5,077	59.48%	239	390	61.28%	11	42	26.19%
Parma	1,023	2,446	41.82%	2,389	4,184	57.10%	167	274	60.95%	20	48	41.67%
Penfield	4,124	7,708	53.50%	5,563	9,096	61.16%	270	439	61.50%	12	45	26.67%
Perinton	5,397	9,927	54.37%	7,949	12,430	63.95%	315	490	64.29%	15	59	25.42%
Pittsford	3,645	6,277	58.07%	4,611	7,250	63.60%	138	208	66.35%	7	14	50.00%
Riga	429	849	50.53%	1,092	1,743	62.65%	69	99	69.70%	3	15	20.00%
Rush	416	683	60.91%	696	1,022	68.10%	41	57	71.93%	6	11	54.55%
Sweden	863	1,755	49.17%	1,357	2,269	59.81%	88	142	61.97%	7	27	25.93%
Webster	4,175	8,484	49.21%	6,004	10,159	59.10%	411	631	65.13%	20	57	35.09%
Wheatland	426	927	45.95%	761	1,206	63.10%	59	91	64.84%	3	6	50.00%
TOWNS TOTAL:	53,476	110,280	48.49%	69,607	117,374	59.30%	4,315	7,185	60.06%	264	898	29.40%
GRAND TOTAL:	76,436	174,961	43.69%	74,857	128,497	58.26%	4,755	8,059	59.00%	386	1,524	25.33%

2014 GENERAL ELECTION
VOTER TURNOUT BY PARTY

LT/LD SUMMARY

Part 2 of 2

LEGISLATIVE DISTRICT OR TOWN	INDEPENDENCE			GREEN			BLANK		
	VOTED	REGISTERED	TURNOUT	VOTED	REGISTERED	TURNOUT	VOTED	REGISTERED	TURNOUT
CITY									
Leg. Dist. 07	24	64	37.50%	3	6	50.00%	120	286	41.96%
Leg. Dist. 16	2	2	100.00%	0	0	0.00%	1	2	50.00%
Leg. Dist. 21	169	462	36.58%	30	54	55.56%	768	2,438	31.50%
Leg. Dist. 22	39	253	15.42%	7	19	36.84%	179	1,799	9.95%
Leg. Dist. 23	266	618	43.04%	55	95	57.89%	1,201	2,883	41.66%
Leg. Dist. 24	129	340	37.94%	42	82	51.22%	682	1,728	39.47%
Leg. Dist. 25	77	320	24.06%	30	53	56.60%	360	1,790	20.11%
Leg. Dist. 26	143	378	37.83%	6	14	42.86%	582	1,776	32.77%
Leg. Dist. 27	119	410	29.02%	17	35	48.57%	473	2,084	22.70%
Leg. Dist. 28	78	314	24.84%	7	26	26.92%	317	1,907	16.62%
Leg. Dist. 29	88	328	26.83%	9	20	45.00%	374	2,098	17.83%
CITY TOTAL:	1,134	3,489	32.50%	206	404	50.99%	5,057	18,791	26.91%
TOWNS									
Brighton	370	1,002	36.93%	44	89	49.44%	2,292	5,220	43.91%
Chili	326	850	38.35%	13	34	38.24%	1,806	4,661	38.75%
Clarkson	81	220	36.82%	1	2	50.00%	397	916	43.34%
East Rochester	85	256	33.20%	5	14	35.71%	368	992	37.10%
Gates	315	842	37.41%	17	32	53.13%	1,451	4,181	34.70%
Greece	1,106	2,990	36.99%	32	107	29.91%	5,578	15,438	36.13%
Hamlin	115	279	41.22%	8	17	47.06%	478	1,298	36.83%
Henrietta	390	1,047	37.25%	20	41	48.78%	2,048	5,409	37.86%
Irondequoit	713	1,724	41.36%	48	115	41.74%	3,783	8,576	44.11%
Mendon	145	347	41.79%	12	26	46.15%	750	1,557	48.17%
Ogden	254	642	39.56%	6	26	23.08%	1,351	3,227	41.87%
Parma	210	546	38.46%	7	14	50.00%	1,034	2,726	37.93%
Penfield	597	1,378	43.32%	8	43	18.60%	3,088	6,681	46.22%
Perinton	744	1,629	45.67%	32	96	33.33%	4,002	8,467	47.27%
Pittsford	398	881	45.18%	14	41	34.15%	2,309	4,989	46.28%
Riga	82	207	39.61%	3	6	50.00%	413	945	43.70%
Rush	55	112	49.11%	4	7	57.14%	345	660	52.27%
Sweden	138	351	39.32%	14	19	73.68%	626	1,550	40.39%
Webster	596	1,528	39.01%	13	48	27.08%	3,345	7,765	43.08%
Wheatland	78	168	46.43%	2	5	40.00%	312	767	40.68%
TOWNS TOTAL:	6,798	16,999	39.99%	303	782	38.75%	35,776	86,025	41.59%
GRAND TOTAL:	7,932	20,488	38.72%	509	1,186	42.92%	40,833	104,816	38.96%

2014 GENERAL ELECTION
VOTER TURNOUT BY AGE

LT/LD SUMMARY
Part 1 of 2

LEGISLATIVE DISTRICT OR TOWN	NDOB			18-24			25-34			35-44		
	VOTED	REGISTERED	TURNOUT	VOTED	REGISTERED	TURNOUT	VOTED	REGISTERED	TURNOUT	VOTED	REGISTERED	TURNOUT
Leg. Dist. 07	3	15	20.00%	8	60	13.33%	33	153	21.57%	48	131	36.64%
Leg. Dist. 16	1	1	100.00%	0	0	0.00%	0	1	0.00%	0	0	0.00%
Leg. Dist. 21	53	95	55.79%	113	1,110	10.18%	645	2,741	23.53%	754	2,253	33.47%
Leg. Dist. 22	18	36	50.00%	83	1,289	6.44%	223	2,327	9.58%	290	1,928	15.04%
Leg. Dist. 23	53	75	70.67%	142	736	19.29%	1,053	3,216	32.74%	812	1,795	45.24%
Leg. Dist. 24	26	44	59.09%	69	432	15.97%	657	1,970	33.35%	535	1,174	45.57%
Leg. Dist. 25	28	72	38.89%	95	1,316	7.22%	446	2,460	18.13%	432	1,781	24.26%
Leg. Dist. 26	28	55	50.91%	53	554	9.57%	325	1,526	21.30%	428	1,363	31.40%
Leg. Dist. 27	37	65	56.92%	167	1,488	11.22%	436	2,901	15.03%	587	2,383	24.63%
Leg. Dist. 28	19	47	40.43%	82	1,088	7.54%	214	2,128	10.06%	340	1,876	18.12%
Leg. Dist. 29	30	75	40.00%	90	1,222	7.36%	282	2,257	12.49%	402	2,004	20.06%
CITY TOTAL:	296	580	51.03%	902	9,295	9.70%	4,314	21,680	19.90%	4,628	16,688	27.73%
Brighton	128	209	61.24%	249	1,411	17.65%	874	3,246	26.93%	1,322	3,078	42.95%
Chili	121	202	59.90%	263	1,232	21.35%	699	2,862	24.42%	1,021	2,774	36.81%
Clarkson	2	8	25.00%	47	242	19.42%	137	491	27.90%	236	605	39.01%
East Rochester	32	55	58.18%	42	288	14.58%	156	620	25.16%	195	558	34.95%
Gates	34	78	43.59%	187	966	19.36%	574	2,713	21.16%	758	2,468	30.71%
Greece	318	663	47.96%	653	4,144	15.76%	1,979	9,150	21.63%	2,421	8,177	29.61%
Hamlin	6	20	30.00%	71	363	19.56%	182	737	24.69%	290	762	38.06%
Henrietta	35	63	55.56%	260	1,560	16.67%	888	3,442	25.80%	1,171	3,354	34.91%
Irondequoit	217	412	52.67%	377	1,970	19.14%	1,426	5,170	27.58%	2,019	4,879	41.38%
Mendon	5	13	38.46%	103	642	16.04%	160	695	23.02%	382	796	47.99%
Ogden	54	81	66.67%	214	811	26.39%	493	1,827	26.98%	741	1,933	38.33%
Parma	14	38	36.84%	139	771	18.03%	340	1,388	24.50%	500	1,441	34.70%
Penfield	118	207	57.00%	295	1,562	18.89%	800	3,152	25.38%	1,513	3,601	42.02%
Perinton	31	77	40.26%	422	2,749	15.35%	1,098	3,930	27.94%	2,028	4,427	45.81%
Pittsford	54	89	60.67%	262	1,493	17.55%	476	1,999	23.81%	1,203	2,604	46.20%
Riga	4	14	28.57%	67	252	26.59%	152	514	29.57%	218	497	43.86%
Rush	30	43	69.77%	43	176	24.43%	82	266	30.83%	131	274	47.81%
Sweden	12	22	54.55%	98	430	22.79%	219	877	24.97%	328	852	38.50%
Webster	114	234	48.72%	329	1,687	19.50%	832	3,491	23.83%	1,530	4,076	37.54%
Wheatland	7	12	58.33%	57	243	23.46%	155	517	29.98%	161	384	41.93%
TOWNS TOTAL:	1,336	2,540	52.60%	4,178	22,992	18.17%	11,722	47,087	24.89%	18,168	47,540	38.22%
GRAND TOTAL:	1,632	3,120	52.31%	5,080	32,287	15.73%	16,036	68,767	23.32%	22,796	64,228	35.49%

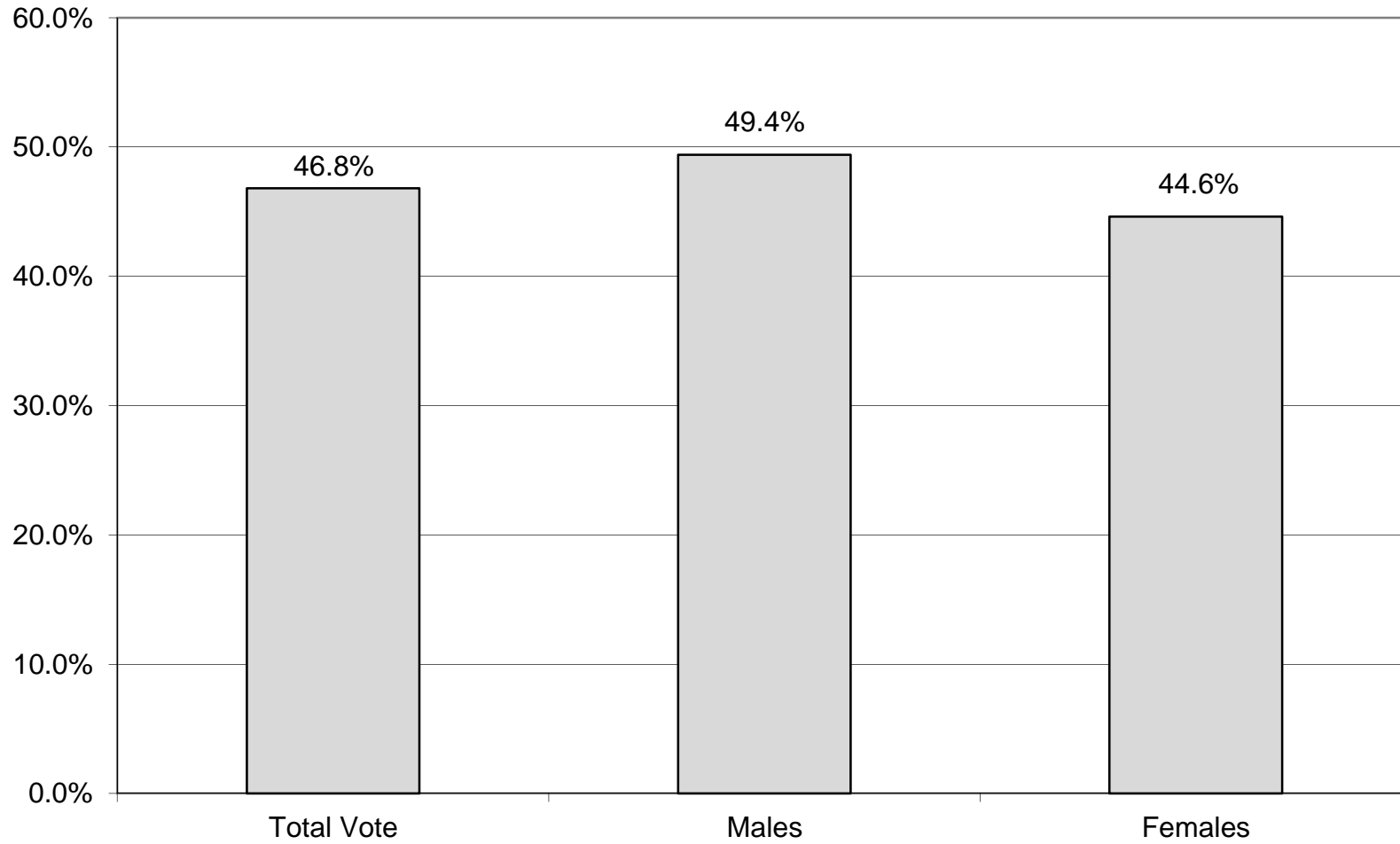
2014 GENERAL ELECTION
VOTER TURNOUT BY AGE

LT/LD SUMMARY
Part 2 of 2

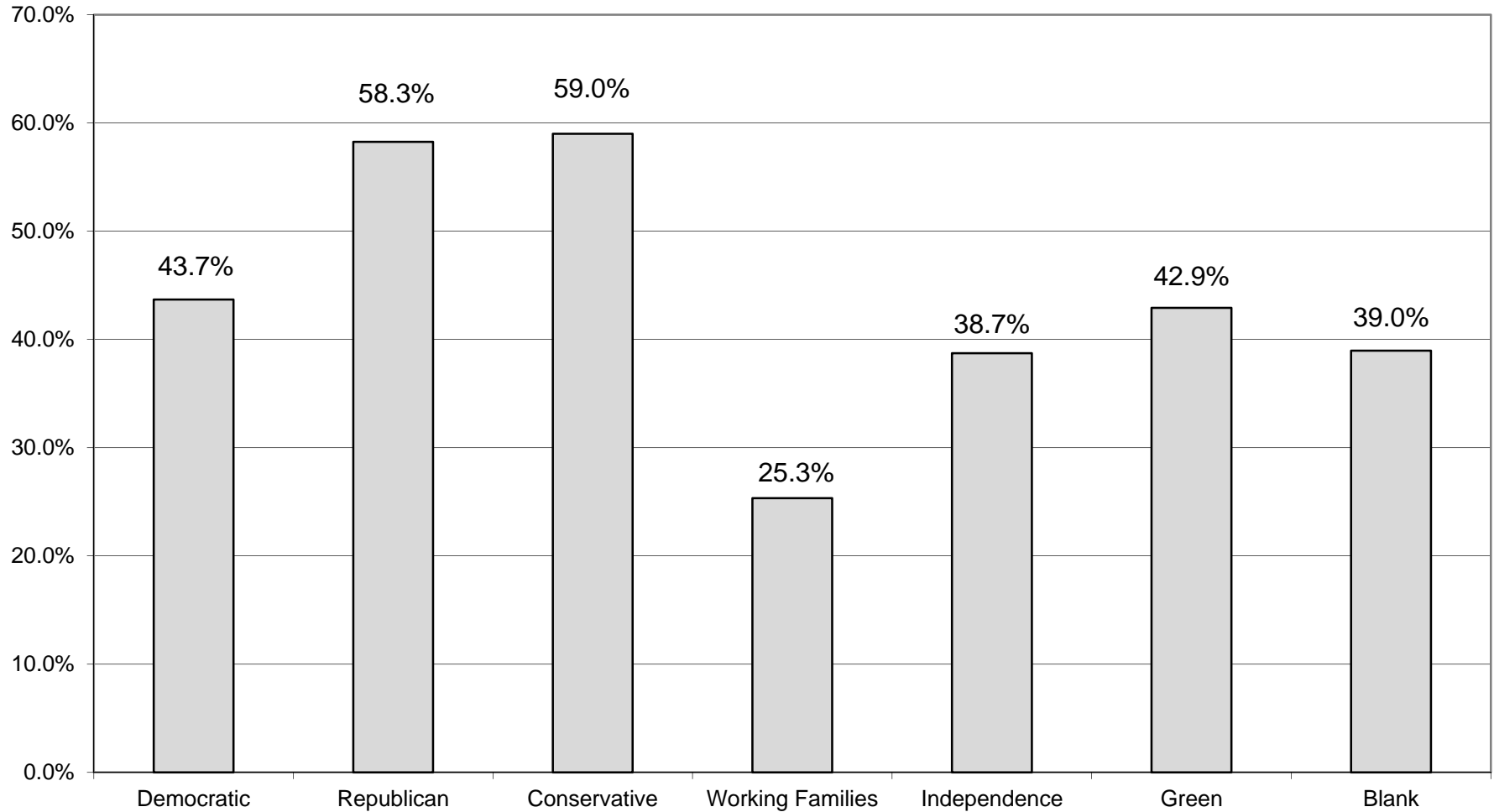
LEGISLATIVE
DISTRICT

OR TOWN	45-54			55-64			65+		
	VOTED	REGISTERED	TURNOUT	VOTED	REGISTERED	TURNOUT	VOTED	REGISTERED	TURNOUT
Leg. Dist. 07	74	181	40.88%	175	296	59.12%	192	333	57.66%
Leg. Dist. 16	0	0	0.00%	2	4	50.00%	5	7	71.43%
Leg. Dist. 21	922	2,257	40.85%	1,120	2,053	54.55%	1,182	1,882	62.81%
Leg. Dist. 22	480	2,090	22.97%	726	1,773	40.95%	776	1,722	45.06%
Leg. Dist. 23	1,048	1,874	55.92%	1,374	2,046	67.16%	1,634	2,198	74.34%
Leg. Dist. 24	611	1,138	53.69%	825	1,295	63.71%	780	1,180	66.10%
Leg. Dist. 25	690	2,041	33.81%	824	1,825	45.15%	1,061	2,005	52.92%
Leg. Dist. 26	626	1,527	41.00%	827	1,567	52.78%	864	1,419	60.89%
Leg. Dist. 27	930	2,726	34.12%	1,266	2,460	51.46%	1,354	2,435	55.61%
Leg. Dist. 28	557	1,985	28.06%	736	1,788	41.16%	610	1,266	48.18%
Leg. Dist. 29	673	2,162	31.13%	993	2,101	47.26%	1,092	2,109	51.78%
CITY TOTAL:	6,611	17,981	36.77%	8,868	17,208	51.53%	9,550	16,556	57.68%
Brighton	2,084	3,767	55.32%	2,624	4,018	65.31%	4,266	6,121	69.69%
Chili	1,770	3,601	49.15%	2,315	3,661	63.23%	2,833	4,296	65.95%
Clarkson	499	922	54.12%	504	787	64.04%	544	824	66.02%
East Rochester	329	710	46.34%	407	695	58.56%	492	776	63.40%
Gates	1,444	3,253	44.39%	1,813	3,166	57.26%	3,037	4,909	61.87%
Greece	4,770	10,874	43.87%	7,169	12,391	57.86%	9,831	15,518	63.35%
Hamlin	551	1,097	50.23%	757	1,200	63.08%	722	1,068	67.60%
Henrietta	1,949	4,112	47.40%	2,552	4,224	60.42%	3,549	5,353	66.30%
Irondequoit	3,218	6,148	52.34%	4,363	6,681	65.30%	5,730	8,534	67.14%
Mendon	968	1,567	61.77%	1,018	1,422	71.59%	981	1,323	74.15%
Ogden	1,352	2,641	51.19%	1,721	2,667	64.53%	1,795	2,690	66.73%
Parma	991	2,037	48.65%	1,350	2,212	61.03%	1,516	2,351	64.48%
Penfield	2,894	5,155	56.14%	3,504	5,220	67.13%	4,538	6,493	69.89%
Perinton	3,716	6,622	56.12%	4,573	6,531	70.02%	6,586	8,762	75.17%
Pittsford	2,351	4,091	57.47%	2,684	3,895	68.91%	4,092	5,489	74.55%
Riga	473	856	55.26%	553	870	63.56%	624	861	72.47%
Rush	311	523	59.46%	464	622	74.60%	502	648	77.47%
Sweden	617	1,181	52.24%	828	1,309	63.25%	991	1,442	68.72%
Webster	3,026	5,975	50.64%	3,623	5,780	62.68%	5,110	7,429	68.78%
Wheatland	310	592	52.36%	451	687	65.65%	500	735	68.03%
TOWNS TOTAL:	33,623	65,724	51.16%	43,273	68,038	63.60%	58,239	85,622	68.02%
GRAND TOTAL:	40,234	83,705	48.07%	52,141	85,246	61.17%	67,789	102,178	66.34%

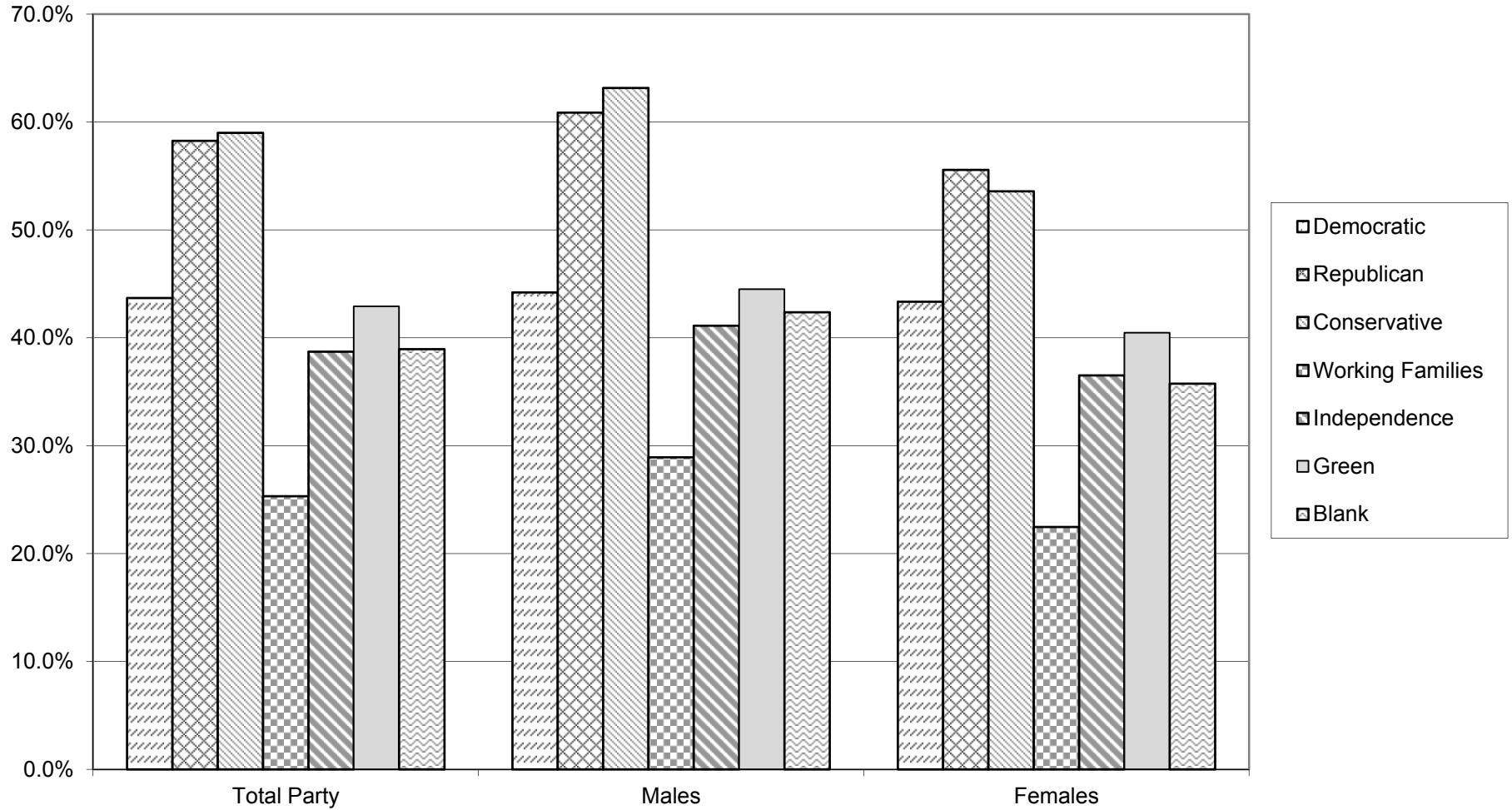
VOTER TURNOUT - TOTAL AND BY GENDER 2014 GENERAL ELECTION



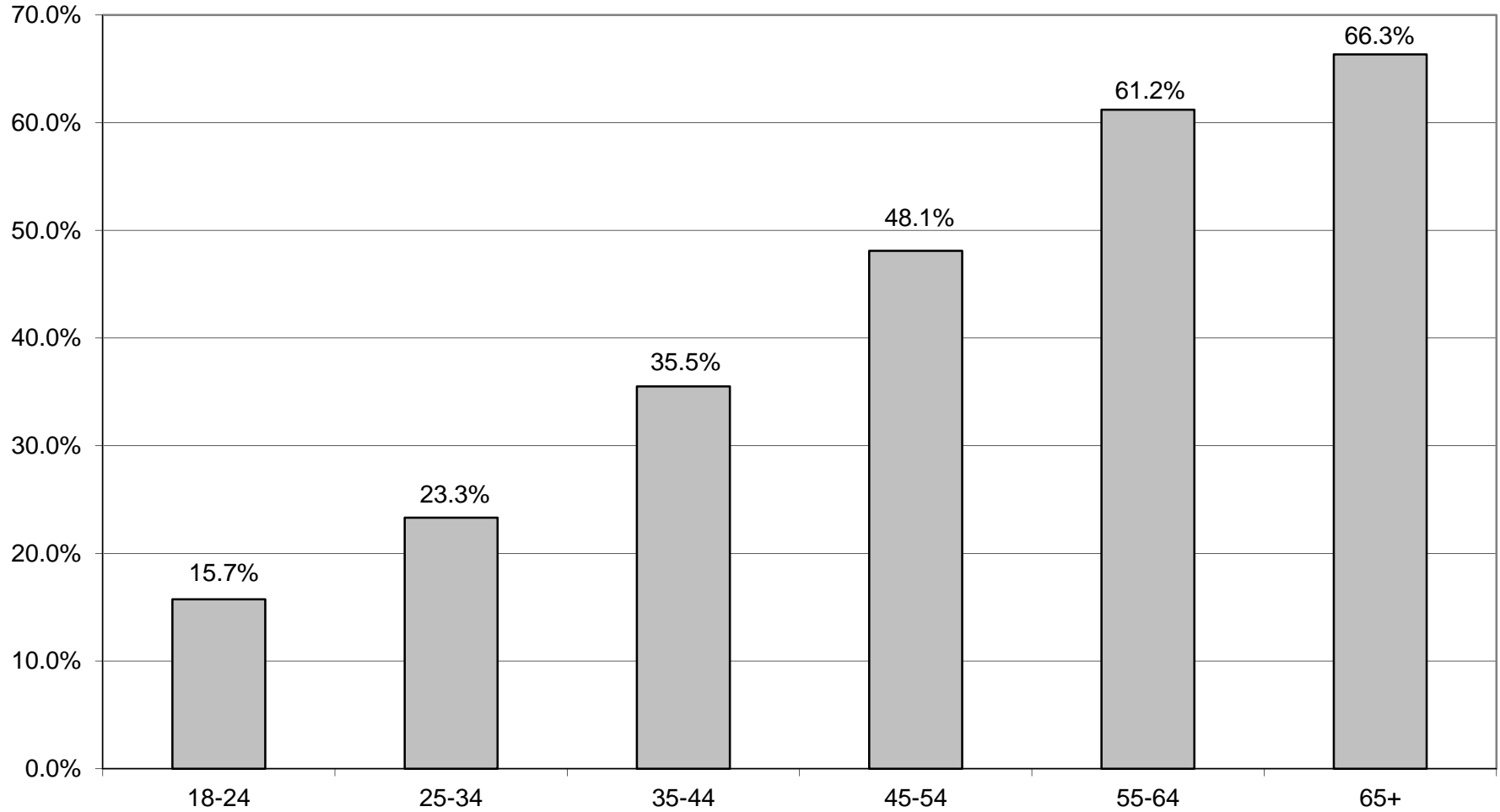
VOTER TURNOUT BY PARTY 2014 GENERAL ELECTION



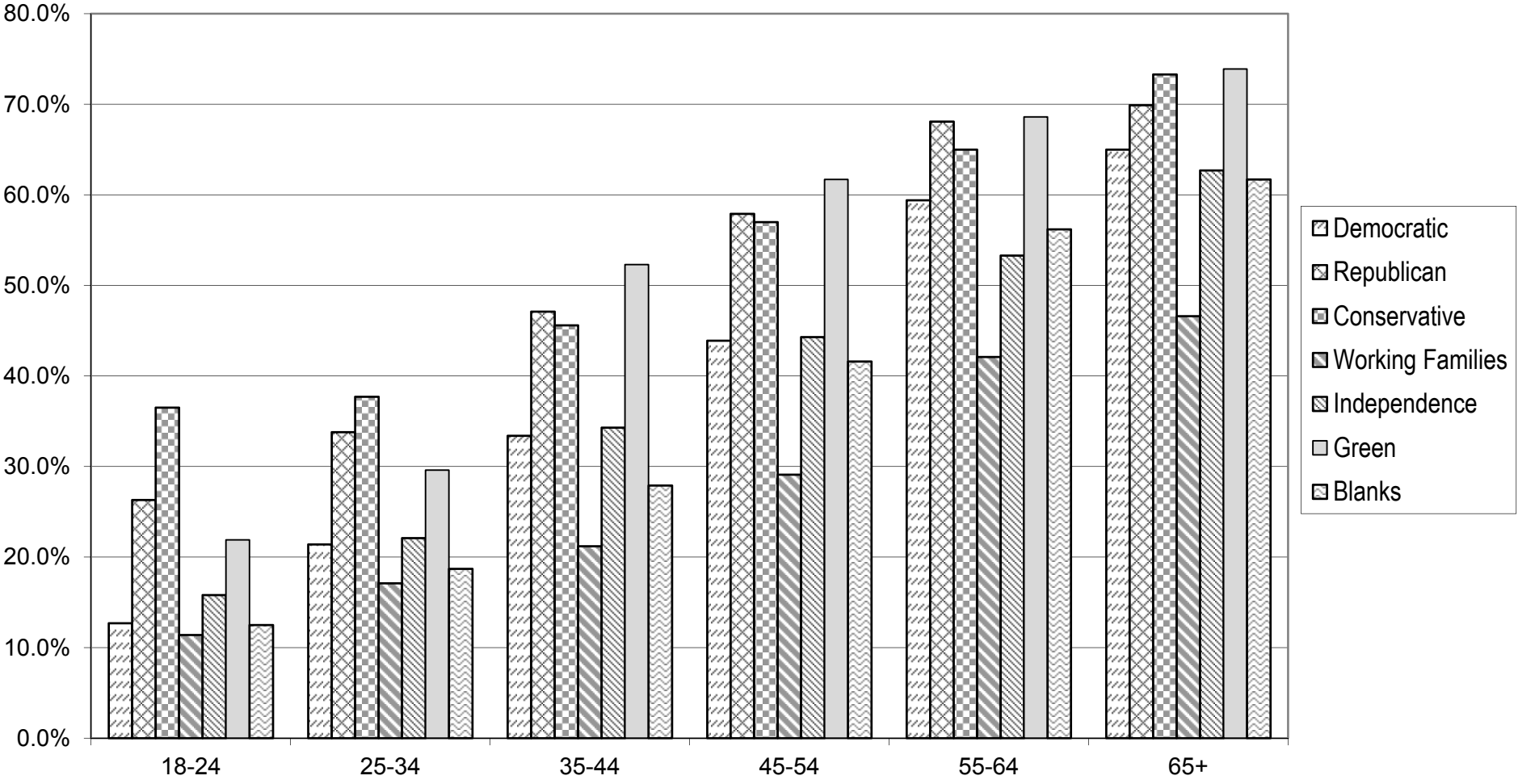
COMPARISON OF TOTAL AND GENDER TURNOUT 2014 GENERAL ELECTION



VOTER TURNOUT BY AGE GROUP 2014 GENERAL ELECTION



COMPARISON OF TURNOUT BY AGE GROUP 2014 GENERAL ELECTION



DEMOCRATIC SUMMARY

2014 GENERAL ELECTION
DEMOCRATIC TURNOUT BY GENDER

LT/LD SUMMARY

LEGISLATIVE DISTRICT OR TOWN	TOTAL VOTERS			MALES			FEMALES		
	VOTED	REGISTERED	TURNOUT	VOTED	REGISTERED	TURNOUT	VOTED	REGISTERED	TURNOUT
CITY									
Leg. Dist. 07	203	477	42.56%	80	180	44.44%	123	297	41.41%
Leg. Dist. 16	3	5	60.00%	1	1	100.00%	2	4	50.00%
Leg. Dist. 21	3,052	7,872	38.77%	1,172	3,099	37.82%	1,880	4,773	39.39%
Leg. Dist. 22	2,181	8,360	26.09%	834	3,361	24.81%	1,347	4,999	26.95%
Leg. Dist. 23	3,377	6,121	55.17%	1,551	2,711	57.21%	1,826	3,410	53.55%
Leg. Dist. 24	2,085	3,977	52.43%	903	1,678	53.81%	1,182	2,299	51.41%
Leg. Dist. 25	2,788	8,438	33.04%	1,135	3,522	32.23%	1,653	4,916	33.62%
Leg. Dist. 26	1,474	3,997	36.88%	567	1,460	38.84%	907	2,537	35.75%
Leg. Dist. 27	3,609	10,700	33.73%	1,314	4,174	31.48%	2,295	6,526	35.17%
Leg. Dist. 28	1,661	6,654	24.96%	657	2,536	25.91%	1,004	4,118	24.38%
Leg. Dist. 29	2,527	8,080	31.27%	961	3,115	30.85%	1,566	4,965	31.54%
CITY TOTAL:	22,960	64,681	35.50%	9,175	25,837	35.51%	13,785	38,844	35.49%
TOWNS									
Brighton	5,603	9,919	56.49%	2,129	3,780	56.32%	3,474	6,139	56.59%
Chili	2,657	5,851	45.41%	1,092	2,344	46.59%	1,565	3,507	44.63%
Clarkson	438	985	44.47%	177	389	45.50%	261	596	43.79%
East Rochester	562	1,256	44.75%	222	502	44.22%	340	754	45.09%
Gates	2,758	6,590	41.85%	1,058	2,549	41.51%	1,700	4,041	42.07%
Greece	7,825	19,275	40.60%	3,057	7,225	42.31%	4,768	12,050	39.57%
Hamlin	478	1,157	41.31%	195	452	43.14%	283	705	40.14%
Henrietta	3,545	8,019	44.21%	1,413	3,173	44.53%	2,132	4,846	44.00%
Irondequoit	6,674	13,161	50.71%	2,548	4,896	52.04%	4,126	8,265	49.92%
Mendon	949	1,765	53.77%	389	701	55.49%	560	1,064	52.63%
Ogden	1,489	3,246	45.87%	577	1,221	47.26%	912	2,025	45.04%
Parma	1,023	2,446	41.82%	414	942	43.95%	609	1,504	40.49%
Penfield	4,124	7,708	53.50%	1,580	2,907	54.35%	2,544	4,801	52.99%
Perinton	5,397	9,927	54.37%	2,076	3,686	56.32%	3,321	6,241	53.21%
Pittsford	3,645	6,277	58.07%	1,426	2,418	58.97%	2,219	3,859	57.50%
Riga	429	849	50.53%	157	322	48.76%	272	527	51.61%
Rush	416	683	60.91%	167	278	60.07%	249	405	61.48%
Sweden	863	1,755	49.17%	348	692	50.29%	515	1,063	48.45%
Webster	4,175	8,484	49.21%	1,637	3,192	51.28%	2,538	5,292	47.96%
Wheatland	426	927	45.95%	174	359	48.47%	252	568	44.37%
TOWNS TOTAL:	53,476	110,280	48.49%	20,836	42,028	49.58%	32,640	68,252	47.82%
GRAND TOTAL:	76,436	174,961	43.69%	30,011	67,865	44.22%	46,425	107,096	43.35%

2014 GENERAL ELECTION
DEMOCRATIC TURNOUT BY AGE

LT/LD SUMMARY

Part 1 of 2

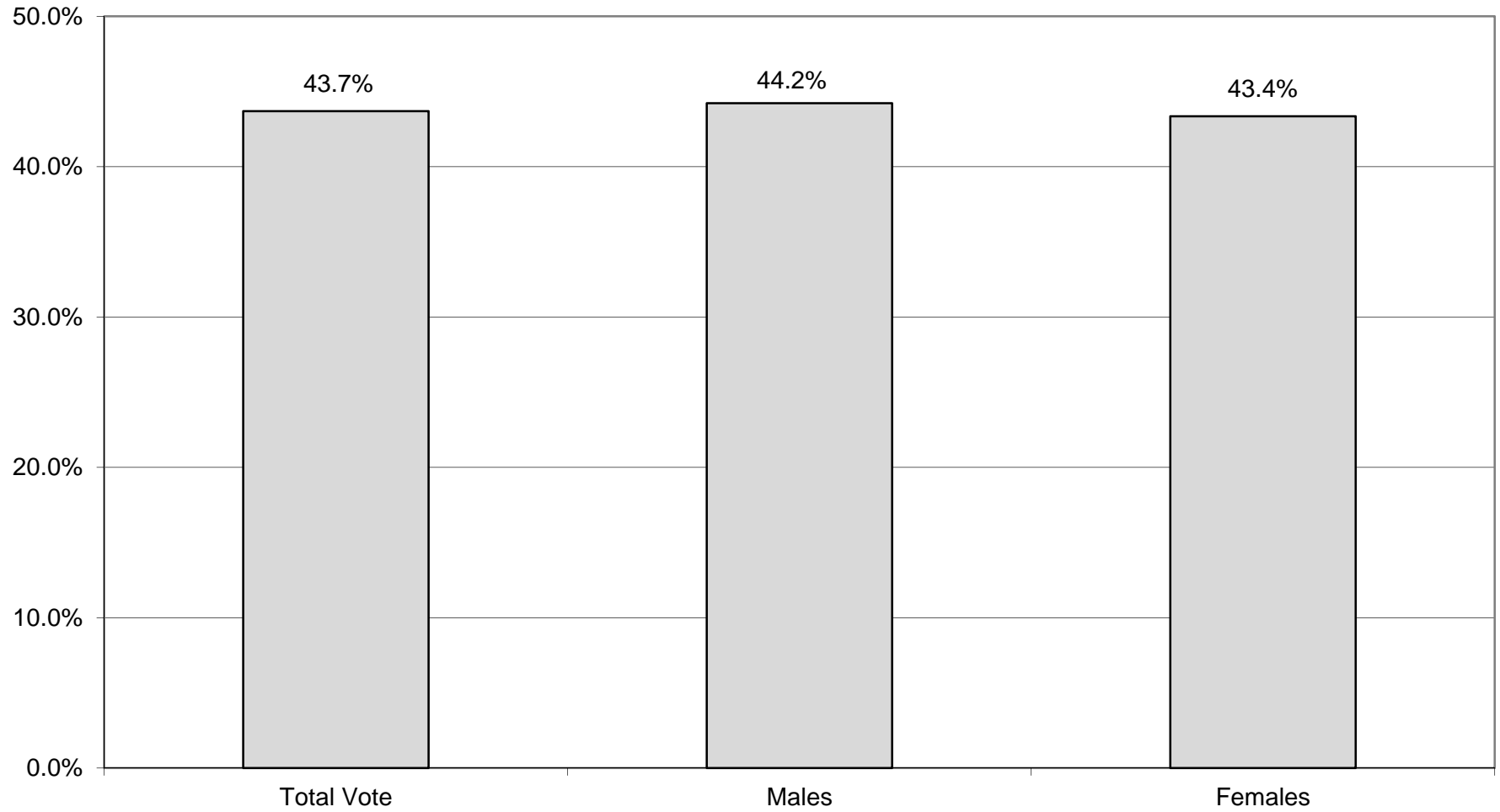
LEGISLATIVE DISTRICT OR TOWN CITY	NDOB			18-24			25-34			35-44		
	VOTED	REGISTERED	TURNOUT	VOTED	REGISTERED	TURNOUT	VOTED	REGISTERED	TURNOUT	VOTED	REGISTERED	TURNOUT
Leg. Dist. 07	1	5	20.00%	1	28	3.57%	8	59	13.56%	21	60	35.00%
Leg. Dist. 16	1	1	100.00%	0	0	0.00%	0	0	0.00%	0	0	0.00%
Leg. Dist. 21	24	36	66.67%	72	690	10.43%	363	1,665	21.80%	473	1,434	32.98%
Leg. Dist. 22	15	26	57.69%	63	838	7.52%	178	1,684	10.57%	249	1,411	17.65%
Leg. Dist. 23	23	29	79.31%	73	351	20.80%	526	1,508	34.88%	394	870	45.29%
Leg. Dist. 24	10	16	62.50%	45	239	18.83%	349	995	35.08%	315	652	48.31%
Leg. Dist. 25	21	43	48.84%	68	879	7.74%	304	1,656	18.36%	315	1,273	24.74%
Leg. Dist. 26	8	11	72.73%	19	317	5.99%	170	815	20.86%	224	714	31.37%
Leg. Dist. 27	23	36	63.89%	108	1,022	10.57%	302	2,104	14.35%	458	1,763	25.98%
Leg. Dist. 28	3	15	20.00%	55	707	7.78%	151	1,422	10.62%	234	1,259	18.59%
Leg. Dist. 29	13	33	39.39%	66	790	8.35%	193	1,506	12.82%	296	1,329	22.27%
CITY TOTAL:	142	251	56.57%	570	5,861	9.73%	2,544	13,414	18.97%	2,979	10,765	27.67%
TOWNS												
Brighton	34	54	62.96%	123	661	18.61%	418	1,441	29.01%	675	1,441	46.84%
Chili	43	64	67.19%	61	334	18.26%	212	969	21.88%	304	911	33.37%
Clarkson	0	4	0.00%	8	51	15.69%	23	132	17.42%	51	169	30.18%
East Rochester	11	21	52.38%	14	97	14.43%	52	215	24.19%	87	228	38.16%
Gates	10	19	52.63%	39	339	11.50%	186	1,068	17.42%	277	973	28.47%
Greece	76	169	44.97%	168	1,350	12.44%	609	3,231	18.85%	714	2,767	25.80%
Hamlin	0	4	0.00%	12	85	14.12%	37	190	19.47%	62	183	33.88%
Henrietta	10	20	50.00%	94	649	14.48%	322	1,357	23.73%	410	1,248	32.85%
Irondequoit	71	126	56.35%	118	795	14.84%	589	2,090	28.18%	839	1,962	42.76%
Mendon	1	2	50.00%	32	201	15.92%	44	213	20.66%	104	238	43.70%
Ogden	16	23	69.57%	37	182	20.33%	104	476	21.85%	182	532	34.21%
Parma	4	9	44.44%	18	197	9.14%	57	363	15.70%	108	362	29.83%
Penfield	26	58	44.83%	73	425	17.18%	268	1,014	26.43%	483	1,164	41.49%
Perinton	9	26	34.62%	118	867	13.61%	383	1,375	27.85%	696	1,495	46.56%
Pittsford	17	25	68.00%	84	474	17.72%	169	710	23.80%	444	915	48.52%
Riga	1	3	33.33%	13	45	28.89%	33	131	25.19%	50	120	41.67%
Rush	8	10	80.00%	12	53	22.64%	28	94	29.79%	34	71	47.89%
Sweden	4	9	44.44%	21	139	15.11%	58	249	23.29%	96	259	37.07%
Webster	31	79	39.24%	67	446	15.02%	245	1,088	22.52%	428	1,236	34.63%
Wheatland	2	5	40.00%	13	85	15.29%	39	152	25.66%	36	118	30.51%
TOWNS TOTAL:	374	730	51.23%	1,125	7,475	15.05%	3,876	16,558	23.41%	6,080	16,392	37.09%
GRAND TOTAL:	516	981	52.60%	1,695	13,336	12.71%	6,420	29,972	21.42%	9,059	27,157	33.36%

2014 GENERAL ELECTION
DEMOCRATIC TURNOUT BY AGE

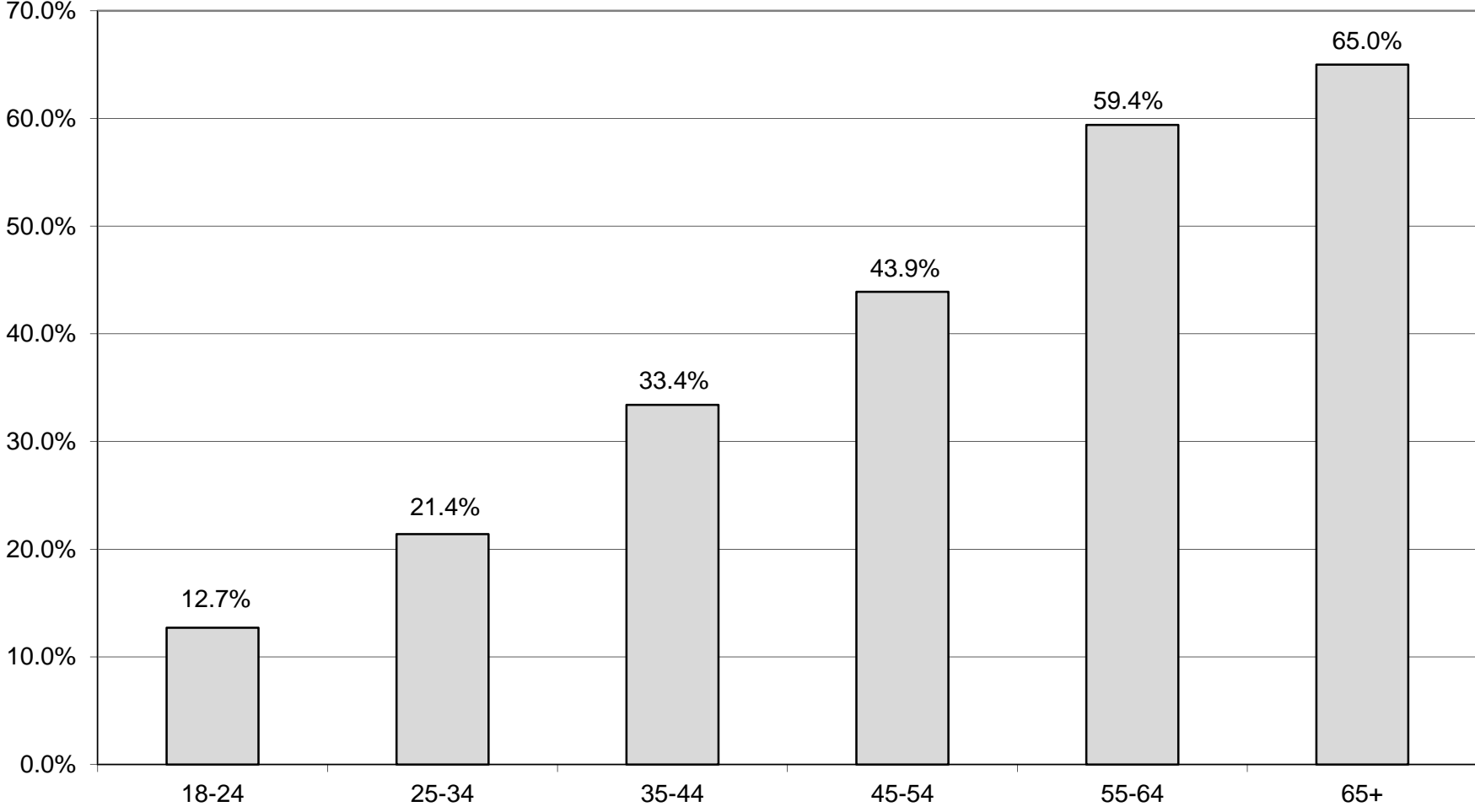
LT/LD SUMMARY
Part 2 of 2

LEGISLATIVE DISTRICT OR TOWN	45-54			55-64			65+		
	VOTED	REGISTERED	TURNOUT	VOTED	REGISTERED	TURNOUT	VOTED	REGISTERED	TURNOUT
CITY									
Leg. Dist. 07	24	71	33.80%	76	124	61.29%	72	130	55.38%
Leg. Dist. 16	0	0	0.00%	1	1	100.00%	1	3	33.33%
Leg. Dist. 21	612	1,495	40.94%	756	1,365	55.38%	752	1,187	63.35%
Leg. Dist. 22	418	1,625	25.72%	608	1,409	43.15%	650	1,367	47.55%
Leg. Dist. 23	566	970	58.35%	797	1,123	70.97%	998	1,270	78.58%
Leg. Dist. 24	377	656	57.47%	534	778	68.64%	455	641	70.98%
Leg. Dist. 25	546	1,573	34.71%	666	1,423	46.80%	868	1,591	54.56%
Leg. Dist. 26	298	781	38.16%	360	721	49.93%	395	638	61.91%
Leg. Dist. 27	754	2,135	35.32%	935	1,801	51.92%	1,029	1,839	55.95%
Leg. Dist. 28	377	1,319	28.58%	471	1,169	40.29%	370	763	48.49%
Leg. Dist. 29	498	1,523	32.70%	707	1,456	48.56%	754	1,443	52.25%
CITY TOTAL:	4,470	12,148	36.80%	5,911	11,370	51.99%	6,344	10,872	58.35%
TOWNS									
Brighton	1,025	1,677	61.12%	1,300	1,906	68.21%	2,028	2,739	74.04%
Chili	448	1,030	43.50%	692	1,135	60.97%	897	1,408	63.71%
Clarkson	86	197	43.65%	113	192	58.85%	157	240	65.42%
East Rochester	85	213	39.91%	143	228	62.72%	170	254	66.93%
Gates	440	1,133	38.83%	650	1,125	57.78%	1,156	1,933	59.80%
Greece	1,207	3,171	38.06%	2,090	3,790	55.15%	2,961	4,797	61.73%
Hamlin	93	219	42.47%	120	231	51.95%	154	245	62.86%
Henrietta	586	1,380	42.46%	867	1,460	59.38%	1,256	1,905	65.93%
Irondequoit	1,162	2,306	50.39%	1,701	2,625	64.80%	2,194	3,257	67.36%
Mendon	246	418	58.85%	274	365	75.07%	248	328	75.61%
Ogden	243	583	41.68%	406	684	59.36%	501	766	65.40%
Parma	187	428	43.69%	310	529	58.60%	339	558	60.75%
Penfield	774	1,399	55.33%	1,093	1,595	68.53%	1,407	2,053	68.53%
Perinton	1,003	1,790	56.03%	1,343	1,929	69.62%	1,845	2,445	75.46%
Pittsford	689	1,171	58.84%	960	1,321	72.67%	1,282	1,661	77.18%
Riga	78	167	46.71%	132	198	66.67%	122	185	65.95%
Rush	76	127	59.84%	135	168	80.36%	123	160	76.88%
Sweden	142	309	45.95%	220	351	62.68%	322	439	73.35%
Webster	764	1,582	48.29%	1,068	1,697	62.93%	1,572	2,356	66.72%
Wheatland	65	156	41.67%	104	172	60.47%	167	239	69.87%
TOWNS TOTAL:	9,399	19,456	48.31%	13,721	21,701	63.23%	18,901	27,968	67.58%
GRAND TOTAL:	13,869	31,604	43.88%	19,632	33,071	59.36%	25,245	38,840	65.00%

DEMOCRATIC TURNOUT - TOTAL AND GENDER 2014 GENERAL ELECTION



DEMOCRATIC TURNOUT BY AGE GROUP 2014 GENERAL ELECTION



REPUBLICAN SUMMARY

2014 GENERAL ELECTION
REPUBLICAN TURNOUT BY GENDER

LT/LD SUMMARY

LEGISLATIVE DISTRICT OR TOWN	TOTAL VOTERS			MALES			FEMALES		
	VOTED	REGISTERED	TURNOUT	VOTED	REGISTERED	TURNOUT	VOTED	REGISTERED	TURNOUT
CITY									
Leg. Dist. 07	165	307	53.75%	85	143	59.44%	80	164	48.78%
Leg. Dist. 16	2	4	50.00%	1	2	50.00%	1	2	50.00%
Leg. Dist. 21	704	1,399	50.32%	369	710	51.97%	335	689	48.62%
Leg. Dist. 22	162	588	27.55%	86	305	28.20%	76	283	26.86%
Leg. Dist. 23	1,126	2,058	54.71%	665	1,161	57.28%	461	897	51.39%
Leg. Dist. 24	526	1,018	51.67%	279	529	52.74%	247	489	50.51%
Leg. Dist. 25	281	776	36.21%	157	404	38.86%	124	372	33.33%
Leg. Dist. 26	834	1,623	51.39%	432	786	54.96%	402	837	48.03%
Leg. Dist. 27	498	1,049	47.47%	263	536	49.07%	235	513	45.81%
Leg. Dist. 28	444	1,091	40.70%	256	577	44.37%	188	514	36.58%
Leg. Dist. 29	508	1,210	41.98%	264	613	43.07%	244	597	40.87%
CITY TOTAL:	5,250	11,123	47.20%	2,857	5,766	49.55%	2,393	5,357	44.67%
TOWNS									
Brighton	3,097	5,360	57.78%	1,617	2,688	60.16%	1,480	2,672	55.39%
Chili	3,902	6,713	58.13%	2,056	3,336	61.63%	1,846	3,377	54.66%
Clarkson	976	1,626	60.02%	522	834	62.59%	454	792	57.32%
East Rochester	589	1,084	54.34%	309	538	57.43%	280	546	51.28%
Gates	3,035	5,420	56.00%	1,571	2,624	59.87%	1,464	2,796	52.36%
Greece	11,663	21,284	54.80%	6,189	10,668	58.01%	5,474	10,616	51.56%
Hamlin	1,408	2,330	60.43%	770	1,213	63.48%	638	1,117	57.12%
Henrietta	4,119	7,062	58.33%	2,195	3,621	60.62%	1,924	3,441	55.91%
Irondequoit	5,684	9,422	60.33%	2,947	4,680	62.97%	2,737	4,742	57.72%
Mendon	1,692	2,637	64.16%	943	1,408	66.97%	749	1,229	60.94%
Ogden	3,020	5,077	59.48%	1,576	2,539	62.07%	1,444	2,538	56.90%
Parma	2,389	4,184	57.10%	1,266	2,174	58.23%	1,123	2,010	55.87%
Penfield	5,563	9,096	61.16%	2,944	4,663	63.14%	2,619	4,433	59.08%
Perinton	7,949	12,430	63.95%	4,166	6,326	65.86%	3,783	6,104	61.98%
Pittsford	4,611	7,250	63.60%	2,452	3,711	66.07%	2,159	3,539	61.01%
Riga	1,092	1,743	62.65%	575	880	65.34%	517	863	59.91%
Rush	696	1,022	68.10%	372	526	70.72%	324	496	65.32%
Sweden	1,357	2,269	59.81%	716	1,162	61.62%	641	1,107	57.90%
Webster	6,004	10,159	59.10%	3,182	5,131	62.02%	2,822	5,028	56.13%
Wheatland	761	1,206	63.10%	396	595	66.55%	365	611	59.74%
TOWNS TOTAL:	69,607	117,374	59.30%	36,764	59,317	61.98%	32,843	58,057	56.57%
GRAND TOTAL:	74,857	128,497	58.26%	39,621	65,083	60.88%	35,236	63,414	55.57%

2014 GENERAL ELECTION
REPUBLICAN TURNOUT BY AGE

LT/LD SUMMARY
Part 1 of 2

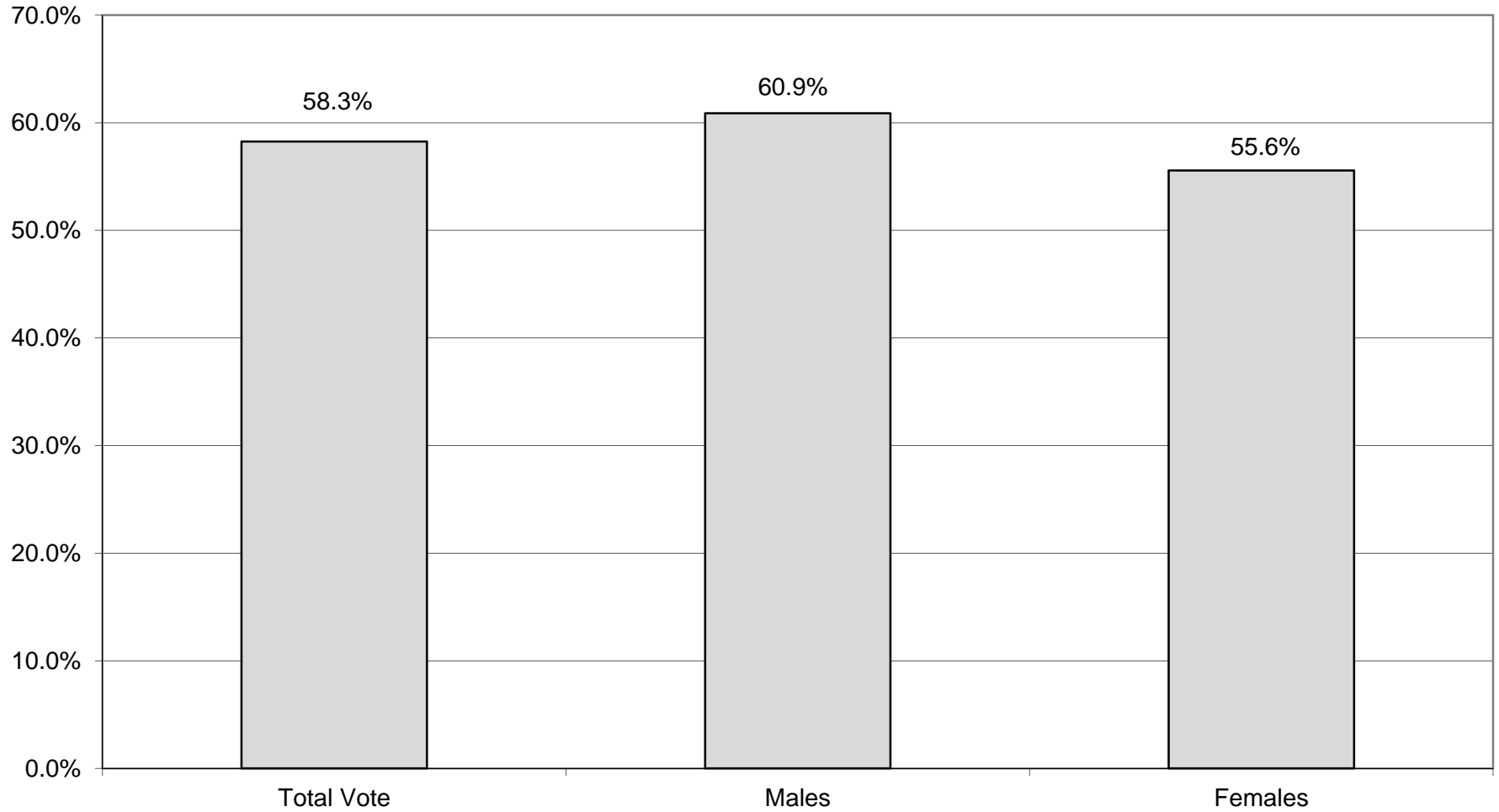
LEGISLATIVE DISTRICT OR TOWN CITY	NDOB			18-24			25-34			35-44		
	VOTED	REGISTERED	TURNOUT	VOTED	REGISTERED	TURNOUT	VOTED	REGISTERED	TURNOUT	VOTED	REGISTERED	TURNOUT
Leg. Dist. 07	2	10	20.00%	1	10	10.00%	8	32	25.00%	7	19	36.84%
Leg. Dist. 16	0	0	0.00%	0	0	0.00%	0	0	0.00%	0	0	0.00%
Leg. Dist. 21	25	53	47.17%	16	66	24.24%	82	224	36.61%	92	210	43.81%
Leg. Dist. 22	2	6	33.33%	4	43	9.30%	14	81	17.28%	5	77	6.49%
Leg. Dist. 23	26	41	63.41%	15	81	18.52%	180	488	36.89%	138	284	48.59%
Leg. Dist. 24	11	23	47.83%	5	33	15.15%	90	231	38.96%	60	118	50.85%
Leg. Dist. 25	6	28	21.43%	7	64	10.94%	31	143	21.68%	35	101	34.65%
Leg. Dist. 26	19	42	45.24%	13	52	25.00%	57	197	28.93%	94	216	43.52%
Leg. Dist. 27	11	24	45.83%	13	54	24.07%	53	167	31.74%	49	139	35.25%
Leg. Dist. 28	15	28	53.57%	8	43	18.60%	21	126	16.67%	47	145	32.41%
Leg. Dist. 29	16	38	42.11%	6	43	13.95%	31	134	23.13%	45	173	26.01%
CITY TOTAL:	133	293	45.39%	88	489	18.00%	567	1,823	31.10%	572	1,482	38.60%
TOWNS												
Brighton	80	139	57.55%	44	226	19.47%	198	596	33.22%	306	627	48.80%
Chili	71	124	57.26%	114	363	31.40%	259	717	36.12%	399	853	46.78%
Clarkson	2	4	50.00%	22	84	26.19%	61	157	38.85%	107	209	51.20%
East Rochester	20	31	64.52%	11	47	23.40%	46	127	36.22%	54	121	44.63%
Gates	23	56	41.07%	74	201	36.82%	191	569	33.57%	239	583	40.99%
Greece	215	448	47.99%	226	919	24.59%	715	2,210	32.35%	986	2,411	40.90%
Hamlin	6	15	40.00%	29	107	27.10%	83	248	33.47%	153	302	50.66%
Henrietta	20	35	57.14%	95	321	29.60%	279	770	36.23%	412	906	45.47%
Irondequoit	121	243	49.79%	107	315	33.97%	365	999	36.54%	532	1,057	50.33%
Mendon	3	10	30.00%	35	171	20.47%	64	214	29.91%	160	287	55.75%
Ogden	30	49	61.22%	104	277	37.55%	197	590	33.39%	340	675	50.37%
Parma	9	27	33.33%	62	211	29.38%	145	410	35.37%	225	496	45.36%
Penfield	80	129	62.02%	101	413	24.46%	289	833	34.69%	550	1,104	49.82%
Perinton	19	42	45.24%	135	713	18.93%	363	991	36.63%	769	1,393	55.20%
Pittsford	33	56	58.93%	80	364	21.98%	149	526	28.33%	429	810	52.96%
Riga	3	11	27.27%	32	96	33.33%	75	179	41.90%	106	194	54.64%
Rush	21	32	65.63%	17	55	30.91%	29	71	40.85%	59	102	57.84%
Sweden	8	13	61.54%	45	110	40.91%	88	257	34.24%	116	247	46.96%
Webster	67	129	51.94%	124	432	28.70%	308	950	32.42%	615	1,297	47.42%
Wheatland	5	6	83.33%	28	76	36.84%	61	157	38.85%	78	131	59.54%
TOWNS TOTAL:	836	1,599	52.28%	1,485	5,501	27.00%	3,965	11,571	34.27%	6,635	13,805	48.06%
GRAND TOTAL:	969	1,892	51.22%	1,573	5,990	26.26%	4,532	13,394	33.84%	7,207	15,287	47.14%

2014 GENERAL ELECTION
REPUBLICAN TURNOUT BY AGE

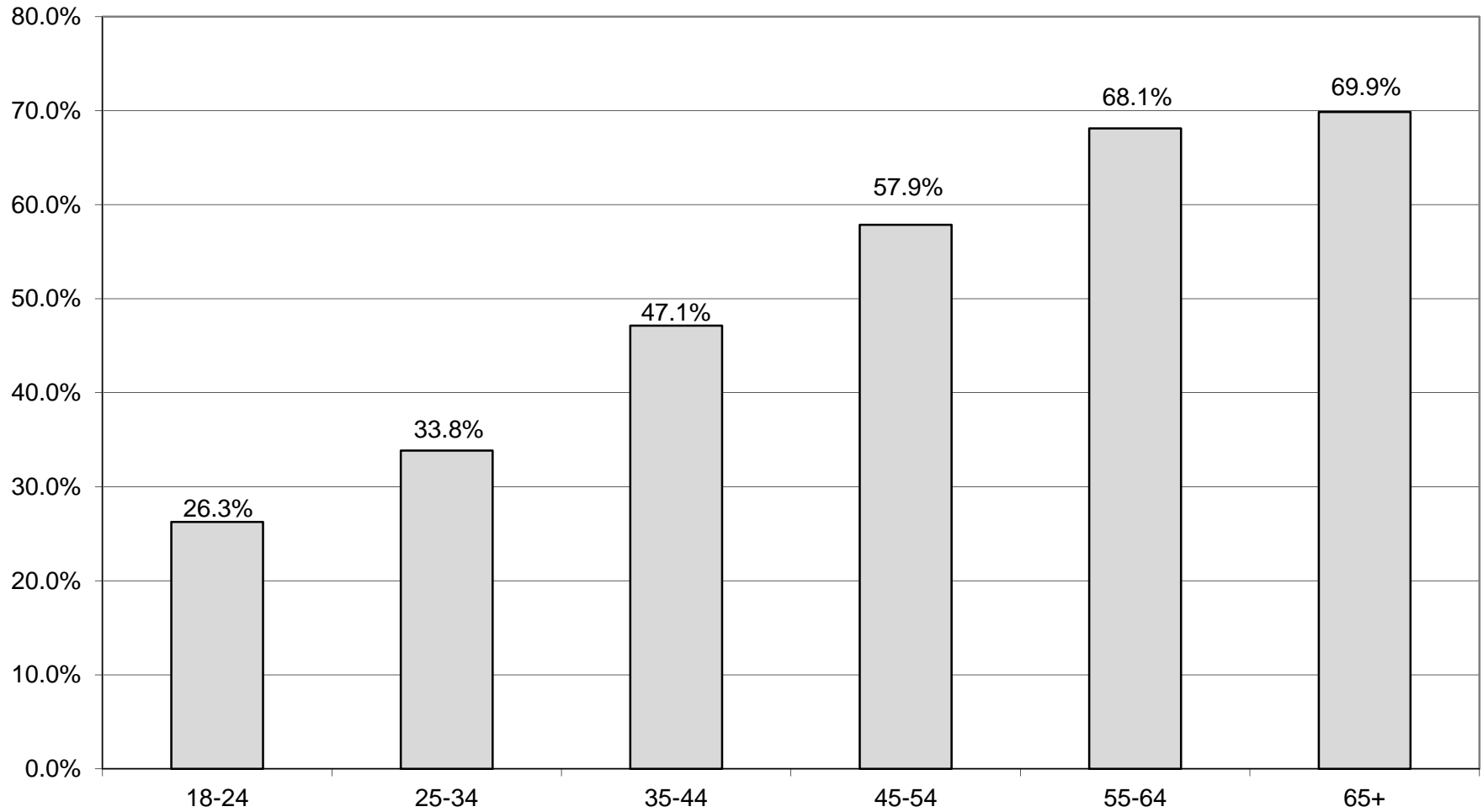
LT/LD SUMMARY
Part 2 of 2

LEGISLATIVE DISTRICT OR TOWN	45-54			55-64			65+		
	VOTED	REGISTERED	TURNOUT	VOTED	REGISTERED	TURNOUT	VOTED	REGISTERED	TURNOUT
CITY									
Leg. Dist. 07	28	48	58.33%	49	74	66.22%	70	114	61.40%
Leg. Dist. 16	0	0	0.00%	1	3	33.33%	1	1	100.00%
Leg. Dist. 21	123	257	47.86%	149	257	57.98%	217	332	65.36%
Leg. Dist. 22	22	118	18.64%	49	116	42.24%	66	147	44.90%
Leg. Dist. 23	195	339	57.52%	247	385	64.16%	325	440	73.86%
Leg. Dist. 24	74	154	48.05%	113	187	60.43%	173	272	63.60%
Leg. Dist. 25	53	136	38.97%	65	126	51.59%	84	178	47.19%
Leg. Dist. 26	154	326	47.24%	205	342	59.94%	292	448	65.18%
Leg. Dist. 27	81	164	49.39%	134	239	56.07%	157	262	59.92%
Leg. Dist. 28	86	220	39.09%	127	257	49.42%	140	272	51.47%
Leg. Dist. 29	76	226	33.63%	139	249	55.82%	195	347	56.20%
CITY TOTAL:	892	1,988	44.87%	1,278	2,235	57.18%	1,720	2,813	61.14%
TOWNS									
Brighton	518	916	56.55%	618	915	67.54%	1,333	1,941	68.68%
Chili	849	1,441	58.92%	900	1,330	67.67%	1,310	1,885	69.50%
Clarkson	256	408	62.75%	239	341	70.09%	289	423	68.32%
East Rochester	136	236	57.63%	137	222	61.71%	185	300	61.67%
Gates	579	1,022	56.65%	668	1,064	62.78%	1,261	1,925	65.51%
Greece	2,127	3,979	53.46%	2,814	4,361	64.53%	4,580	6,956	65.84%
Hamlin	296	492	60.16%	418	570	73.33%	423	596	70.97%
Henrietta	832	1,427	58.30%	974	1,436	67.83%	1,507	2,167	69.54%
Irondequoit	1,127	1,870	60.27%	1,295	1,813	71.43%	2,137	3,125	68.38%
Mendon	468	696	67.24%	443	604	73.34%	519	655	79.24%
Ogden	693	1,138	60.90%	768	1,072	71.64%	888	1,276	69.59%
Parma	498	873	57.04%	625	931	67.13%	825	1,236	66.75%
Penfield	1,260	2,065	61.02%	1,316	1,853	71.02%	1,967	2,699	72.88%
Perinton	1,703	2,791	61.02%	1,869	2,522	74.11%	3,091	3,978	77.70%
Pittsford	1,006	1,614	62.33%	1,037	1,436	72.21%	1,877	2,444	76.80%
Riga	251	398	63.07%	260	388	67.01%	365	477	76.52%
Rush	145	222	65.32%	184	239	76.99%	241	301	80.07%
Sweden	284	468	60.68%	348	492	70.73%	468	682	68.62%
Webster	1,324	2,322	57.02%	1,362	1,981	68.75%	2,204	3,048	72.31%
Wheatland	145	233	62.23%	197	257	76.65%	247	346	71.39%
TOWNS TOTAL:	14,497	24,611	58.90%	16,472	23,827	69.13%	25,717	36,460	70.53%
GRAND TOTAL:	15,389	26,599	57.86%	17,750	26,062	68.11%	27,437	39,273	69.86%

REPUBLICAN TURNOUT - TOTAL AND GENDER 2014 GENERAL ELECTION



REPUBLICAN TURNOUT BY AGE GROUP 2014 GENERAL ELECTION



CONSERVATIVE SUMMARY

2014 GENERAL ELECTION
CONSERVATIVE TURNOUT BY GENDER

LT/LD SUMMARY

LEGISLATIVE DISTRICT OR TOWN	TOTAL VOTERS			MALES			FEMALES		
	VOTED	REGISTERED	TURNOUT	VOTED	REGISTERED	TURNOUT	VOTED	REGISTERED	TURNOUT
CITY									
Leg. Dist. 07	15	23	65.22%	10	14	71.43%	5	9	55.56%
Leg. Dist. 16	0	0	0.00%	0	0	0.00%	0	0	0.00%
Leg. Dist. 21	45	89	50.56%	30	51	58.82%	15	38	39.47%
Leg. Dist. 22	17	54	31.48%	14	26	53.85%	3	28	10.71%
Leg. Dist. 23	70	122	57.38%	40	72	55.56%	30	50	60.00%
Leg. Dist. 24	25	55	45.45%	14	27	51.85%	11	28	39.29%
Leg. Dist. 25	29	55	52.73%	16	30	53.33%	13	25	52.00%
Leg. Dist. 26	100	166	60.24%	57	91	62.64%	43	75	57.33%
Leg. Dist. 27	49	98	50.00%	34	62	54.84%	15	36	41.67%
Leg. Dist. 28	43	93	46.24%	26	48	54.17%	17	45	37.78%
Leg. Dist. 29	47	119	39.50%	30	70	42.86%	17	49	34.69%
CITY TOTAL:	440	874	50.34%	271	491	55.19%	169	383	44.13%
TOWNS									
Brighton	127	223	56.95%	80	125	64.00%	47	98	47.96%
Chili	295	473	62.37%	178	280	63.57%	117	193	60.62%
Clarkson	74	117	63.25%	46	75	61.33%	28	42	66.67%
East Rochester	41	80	51.25%	22	45	48.89%	19	35	54.29%
Gates	251	415	60.48%	155	226	68.58%	96	189	50.79%
Greece	887	1,610	55.09%	501	841	59.57%	386	769	50.20%
Hamlin	84	146	57.53%	57	93	61.29%	27	53	50.94%
Henrietta	270	477	56.60%	156	267	58.43%	114	210	54.29%
Irondequoit	424	706	60.06%	261	414	63.04%	163	292	55.82%
Mendon	65	117	55.56%	41	72	56.94%	24	45	53.33%
Ogden	239	390	61.28%	143	207	69.08%	96	183	52.46%
Parma	167	274	60.95%	107	160	66.88%	60	114	52.63%
Penfield	270	439	61.50%	152	248	61.29%	118	191	61.78%
Perinton	315	490	64.29%	205	299	68.56%	110	191	57.59%
Pittsford	138	208	66.35%	87	128	67.97%	51	80	63.75%
Riga	69	99	69.70%	38	53	71.70%	31	46	67.39%
Rush	41	57	71.93%	25	32	78.13%	16	25	64.00%
Sweden	88	142	61.97%	54	79	68.35%	34	63	53.97%
Webster	411	631	65.13%	255	363	70.25%	156	268	58.21%
Wheatland	59	91	64.84%	42	55	76.36%	17	36	47.22%
TOWNS TOTAL:	4,315	7,185	60.06%	2,605	4,062	64.13%	1,710	3,123	54.76%
GRAND TOTAL:	4,755	8,059	59.00%	2,876	4,553	63.17%	1,879	3,506	53.59%

2014 GENERAL ELECTION
CONSERVATIVE TURNOUT BY AGE

LT/LD SUMMARY
Part 1 of 2

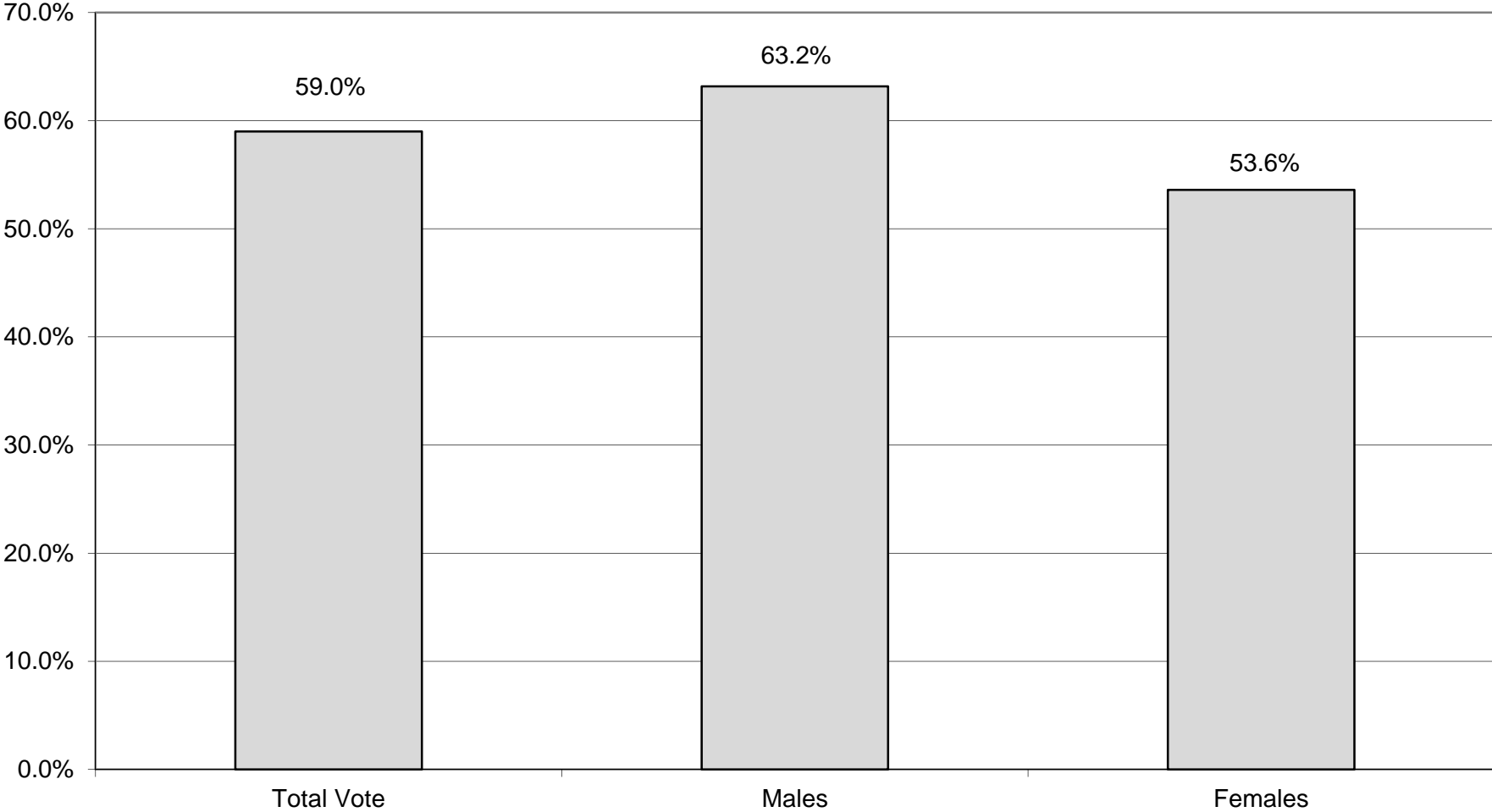
LEGISLATIVE DISTRICT OR TOWN CITY	NDOB			18-24			25-34			35-44		
	VOTED	REGISTERED	TURNOUT	VOTED	REGISTERED	TURNOUT	VOTED	REGISTERED	TURNOUT	VOTED	REGISTERED	TURNOUT
Leg. Dist. 07	0	0	0.00%	0	0	0.00%	2	2	100.00%	1	1	100.00%
Leg. Dist. 16	0	0	0.00%	0	0	0.00%	0	0	0.00%	0	0	0.00%
Leg. Dist. 21	1	1	100.00%	1	3	33.33%	4	17	23.53%	2	10	20.00%
Leg. Dist. 22	0	0	0.00%	0	3	0.00%	1	6	16.67%	2	8	25.00%
Leg. Dist. 23	0	0	0.00%	3	5	60.00%	12	30	40.00%	5	12	41.67%
Leg. Dist. 24	1	1	100.00%	0	2	0.00%	2	10	20.00%	3	8	37.50%
Leg. Dist. 25	0	0	0.00%	1	5	20.00%	5	7	71.43%	3	8	37.50%
Leg. Dist. 26	0	0	0.00%	3	11	27.27%	3	10	30.00%	7	15	46.67%
Leg. Dist. 27	0	0	0.00%	3	11	27.27%	4	12	33.33%	4	8	50.00%
Leg. Dist. 28	0	0	0.00%	1	2	50.00%	3	8	37.50%	1	11	9.09%
Leg. Dist. 29	0	0	0.00%	1	5	20.00%	4	12	33.33%	4	22	18.18%
CITY TOTAL:	2	2	100.00%	13	47	27.66%	40	114	35.09%	32	103	31.07%
TOWNS												
Brighton	0	0	0.00%	3	15	20.00%	10	25	40.00%	15	33	45.45%
Chili	2	2	100.00%	7	20	35.00%	25	51	49.02%	29	67	43.28%
Clarkson	0	0	0.00%	2	6	33.33%	8	13	61.54%	12	17	70.59%
East Rochester	0	0	0.00%	1	2	50.00%	1	7	14.29%	2	7	28.57%
Gates	0	0	0.00%	6	17	35.29%	16	43	37.21%	20	43	46.51%
Greece	7	7	100.00%	28	74	37.84%	46	158	29.11%	75	182	41.21%
Hamlin	0	0	0.00%	4	8	50.00%	2	12	16.67%	7	17	41.18%
Henrietta	0	1	0.00%	5	21	23.81%	16	50	32.00%	24	58	41.38%
Irondequoit	4	5	80.00%	7	24	29.17%	23	67	34.33%	45	94	47.87%
Mendon	0	0	0.00%	3	17	17.65%	5	8	62.50%	9	12	75.00%
Ogden	0	0	0.00%	11	26	42.31%	18	41	43.90%	26	46	56.52%
Parma	0	0	0.00%	10	19	52.63%	14	28	50.00%	20	35	57.14%
Penfield	0	1	0.00%	14	30	46.67%	14	33	42.42%	23	45	51.11%
Perinton	0	1	0.00%	10	26	38.46%	11	28	39.29%	24	56	42.86%
Pittsford	0	1	0.00%	7	12	58.33%	4	13	30.77%	11	23	47.83%
Riga	0	0	0.00%	4	11	36.36%	6	11	54.55%	8	12	66.67%
Rush	0	0	0.00%	0	2	0.00%	3	3	100.00%	1	4	25.00%
Sweden	0	0	0.00%	5	12	41.67%	7	17	41.18%	11	17	64.71%
Webster	3	3	100.00%	16	40	40.00%	21	50	42.00%	38	78	48.72%
Wheatland	0	0	0.00%	2	4	50.00%	3	5	60.00%	5	10	50.00%
TOWNS TOTAL:	16	21	76.19%	145	386	37.56%	253	663	38.16%	405	856	47.31%
GRAND TOTAL:	18	23	78.26%	158	433	36.49%	293	777	37.71%	437	959	45.57%

2014 GENERAL ELECTION
CONSERVATIVE TURNOUT BY AGE

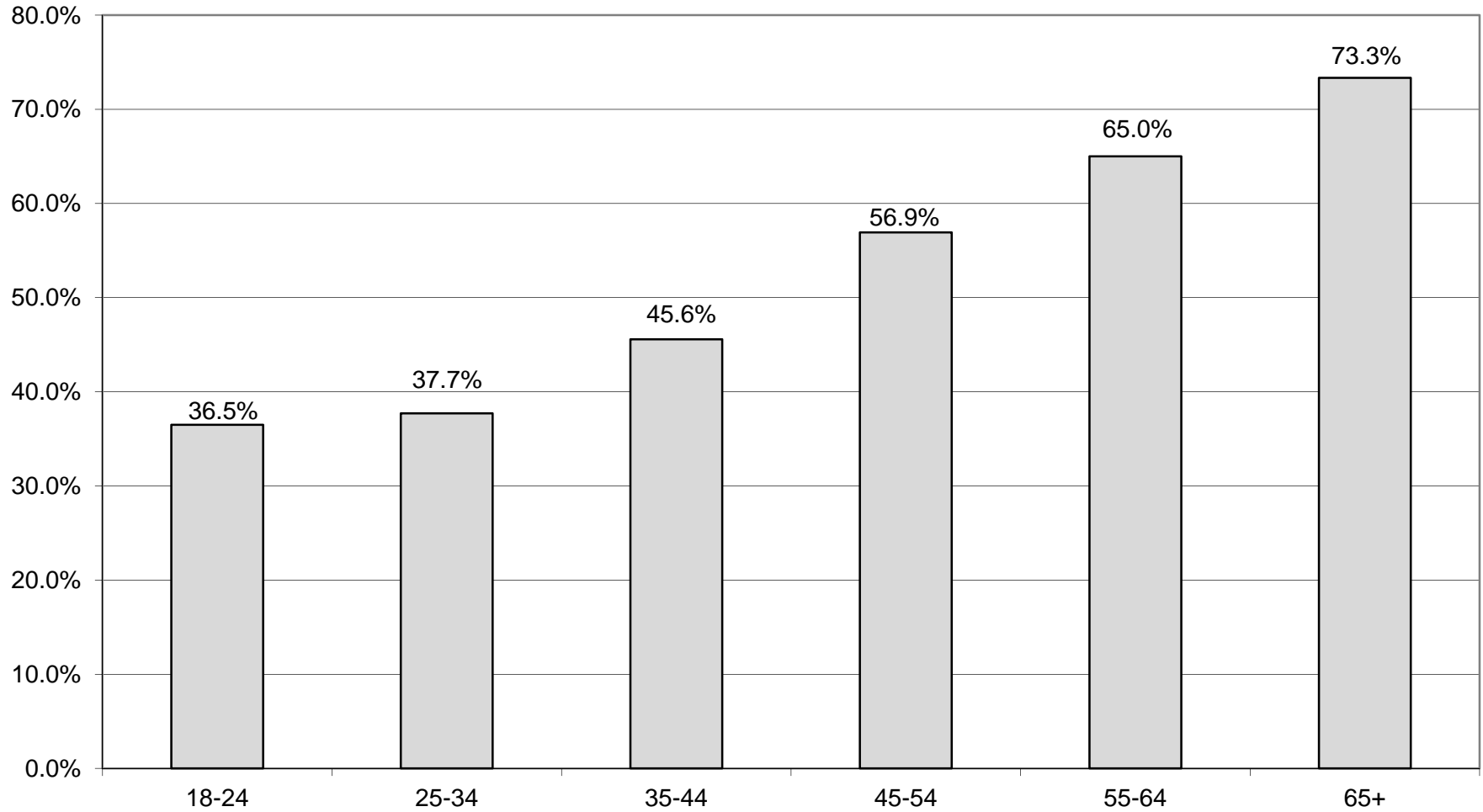
LT/LD SUMMARY
Part 2 of 2

LEGISLATIVE DISTRICT OR TOWN	45-54			55-64			65+		
	VOTED	REGISTERED	TURNOUT	VOTED	REGISTERED	TURNOUT	VOTED	REGISTERED	TURNOUT
CITY									
Leg. Dist. 07	4	5	80.00%	3	8	37.50%	5	7	71.43%
Leg. Dist. 16	0	0	0.00%	0	0	0.00%	0	0	0.00%
Leg. Dist. 21	12	17	70.59%	14	25	56.00%	11	16	68.75%
Leg. Dist. 22	2	9	22.22%	7	17	41.18%	5	11	45.45%
Leg. Dist. 23	16	27	59.26%	19	28	67.86%	15	20	75.00%
Leg. Dist. 24	5	8	62.50%	8	14	57.14%	6	12	50.00%
Leg. Dist. 25	5	11	45.45%	5	13	38.46%	10	11	90.91%
Leg. Dist. 26	21	34	61.76%	36	55	65.45%	30	41	73.17%
Leg. Dist. 27	8	20	40.00%	13	19	68.42%	17	28	60.71%
Leg. Dist. 28	7	19	36.84%	17	33	51.52%	14	20	70.00%
Leg. Dist. 29	9	23	39.13%	11	24	45.83%	18	33	54.55%
CITY TOTAL:	89	173	51.45%	133	236	56.36%	131	199	65.83%
TOWNS									
Brighton	24	42	57.14%	32	47	68.09%	43	61	70.49%
Chili	59	104	56.73%	71	100	71.00%	102	129	79.07%
Clarkson	26	38	68.42%	16	26	61.54%	10	17	58.82%
East Rochester	12	22	54.55%	17	29	58.62%	8	13	61.54%
Gates	62	100	62.00%	67	101	66.34%	80	111	72.07%
Greece	172	338	50.89%	286	446	64.13%	273	405	67.41%
Hamlin	25	36	69.44%	31	52	59.62%	15	21	71.43%
Henrietta	56	98	57.14%	66	111	59.46%	103	138	74.64%
Irondequoit	67	124	54.03%	131	190	68.95%	147	202	72.77%
Mendon	11	24	45.83%	20	28	71.43%	17	28	60.71%
Ogden	60	99	60.61%	67	99	67.68%	57	79	72.15%
Parma	37	62	59.68%	43	72	59.72%	43	58	74.14%
Penfield	59	102	57.84%	64	100	64.00%	96	128	75.00%
Perinton	49	88	55.68%	74	109	67.89%	147	182	80.77%
Pittsford	33	50	66.00%	22	35	62.86%	61	74	82.43%
Riga	20	26	76.92%	19	22	86.36%	12	17	70.59%
Rush	9	16	56.25%	13	15	86.67%	15	17	88.24%
Sweden	20	37	54.05%	30	38	78.95%	15	21	71.43%
Webster	82	129	63.57%	109	160	68.13%	142	171	83.04%
Wheatland	10	17	58.82%	21	33	63.64%	18	22	81.82%
TOWNS TOTAL:	893	1,552	57.54%	1,199	1,813	66.13%	1,404	1,894	74.13%
GRAND TOTAL:	982	1,725	56.93%	1,332	2,049	65.01%	1,535	2,093	73.34%

CONSERVATIVE TURNOUT - TOTAL AND GENDER 2014 GENERAL ELECTION



CONSERVATIVE TURNOUT BY AGE GROUP 2014 GENERAL ELECTION



WORKING FAMILIES SUMMARY

2014 GENERAL ELECTION
WORKING FAMILIES TURNOUT BY GENDER

LT/LD SUMMARY

LEGISLATIVE DISTRICT OR TOWN	TOTAL VOTERS			MALES			FEMALES		
	VOTED	REGISTERED	TURNOUT	VOTED	REGISTERED	TURNOUT	VOTED	REGISTERED	TURNOUT
CITY									
Leg. Dist. 07	3	6	50.00%	0	2	0.00%	3	4	75.00%
Leg. Dist. 16	0	0	0.00%	0	0	0.00%	0	0	0.00%
Leg. Dist. 21	21	77	27.27%	9	26	34.62%	12	51	23.53%
Leg. Dist. 22	11	92	11.96%	5	33	15.15%	6	59	10.17%
Leg. Dist. 23	21	43	48.84%	14	26	53.85%	7	17	41.18%
Leg. Dist. 24	14	33	42.42%	7	18	38.89%	7	15	46.67%
Leg. Dist. 25	11	68	16.18%	7	27	25.93%	4	41	9.76%
Leg. Dist. 26	12	57	21.05%	3	26	11.54%	9	31	29.03%
Leg. Dist. 27	12	82	14.63%	5	28	17.86%	7	54	12.96%
Leg. Dist. 28	8	93	8.60%	3	33	9.09%	5	60	8.33%
Leg. Dist. 29	9	75	12.00%	5	31	16.13%	4	44	9.09%
CITY TOTAL:	122	626	19.49%	58	250	23.20%	64	376	17.02%
TOWNS									
Brighton	14	37	37.84%	8	16	50.00%	6	21	28.57%
Chili	23	46	50.00%	11	21	52.38%	12	25	48.00%
Clarkson	2	13	15.38%	1	6	16.67%	1	7	14.29%
East Rochester	3	20	15.00%	1	10	10.00%	2	10	20.00%
Gates	20	73	27.40%	10	27	37.04%	10	46	21.74%
Greece	50	213	23.47%	25	90	27.78%	25	123	20.33%
Hamlin	8	20	40.00%	3	8	37.50%	5	12	41.67%
Henrietta	12	53	22.64%	6	23	26.09%	6	30	20.00%
Irondequoit	24	90	26.67%	14	50	28.00%	10	40	25.00%
Mendon	4	9	44.44%	1	4	25.00%	3	5	60.00%
Ogden	11	42	26.19%	5	22	22.73%	6	20	30.00%
Parma	20	48	41.67%	12	28	42.86%	8	20	40.00%
Penfield	12	45	26.67%	5	22	22.73%	7	23	30.43%
Perinton	15	59	25.42%	8	29	27.59%	7	30	23.33%
Pittsford	7	14	50.00%	4	8	50.00%	3	6	50.00%
Riga	3	15	20.00%	2	5	40.00%	1	10	10.00%
Rush	6	11	54.55%	4	8	50.00%	2	3	66.67%
Sweden	7	27	25.93%	3	12	25.00%	4	15	26.67%
Webster	20	57	35.09%	13	32	40.63%	7	25	28.00%
Wheatland	3	6	50.00%	1	3	33.33%	2	3	66.67%
TOWNS TOTAL:	264	898	29.40%	137	424	32.31%	127	474	26.79%
GRAND TOTAL:	386	1,524	25.33%	195	674	28.93%	191	850	22.47%

2014 GENERAL ELECTION
WORKING FAMILIES TURNOUT BY AGE

LT/LD SUMMARY
Part 1 of 2

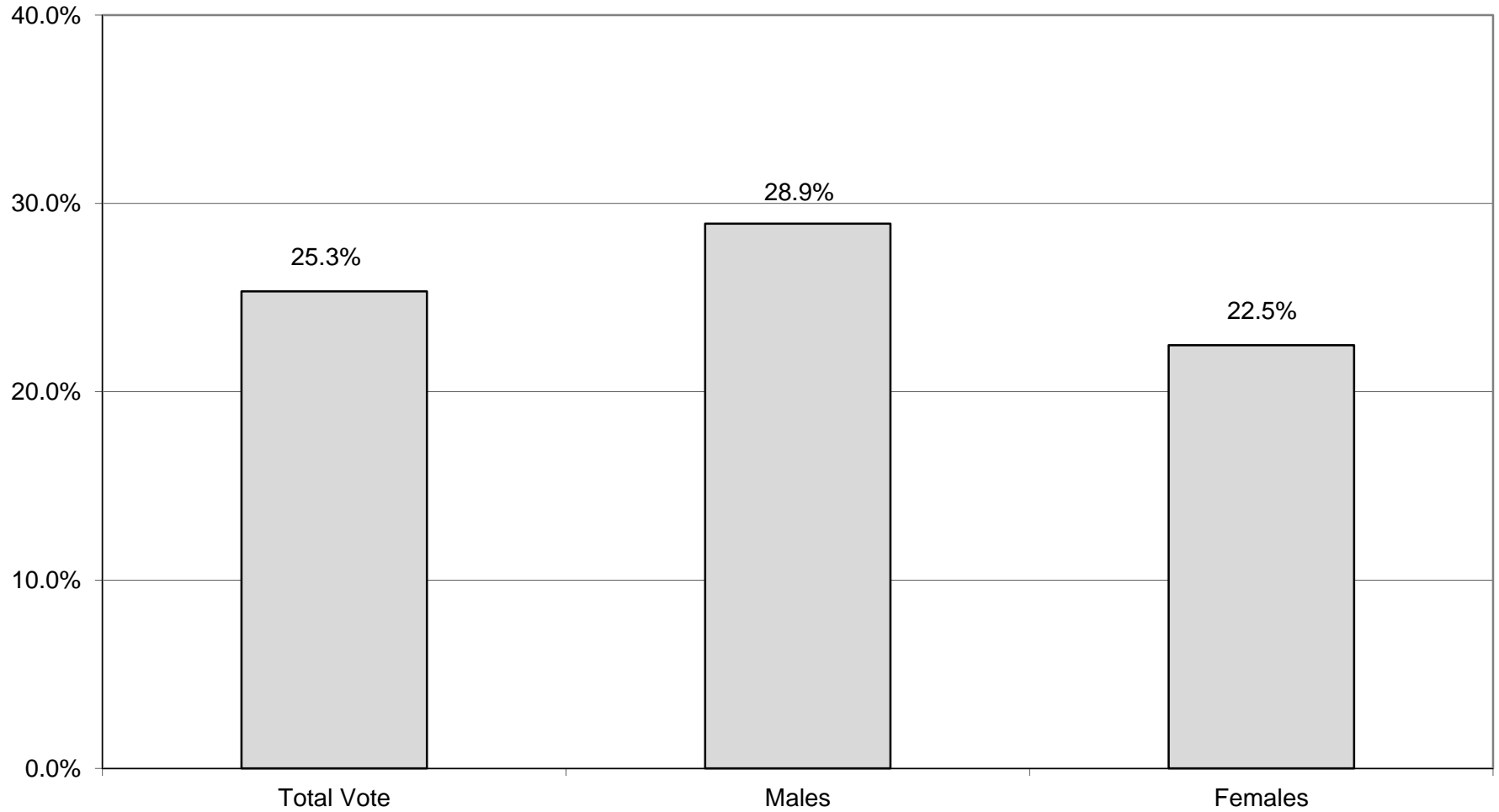
LEGISLATIVE DISTRICT OR TOWN	NDOB			18-24			25-34			35-44		
	VOTED	REGISTERED	TURNOUT	VOTED	REGISTERED	TURNOUT	VOTED	REGISTERED	TURNOUT	VOTED	REGISTERED	TURNOUT
CITY												
Leg. Dist. 07	0	0	0.00%	0	0	0.00%	1	3	33.33%	1	2	50.00%
Leg. Dist. 16	0	0	0.00%	0	0	0.00%	0	0	0.00%	0	0	0.00%
Leg. Dist. 21	0	0	0.00%	1	5	20.00%	7	28	25.00%	4	23	17.39%
Leg. Dist. 22	0	0	0.00%	0	9	0.00%	1	26	3.85%	6	29	20.69%
Leg. Dist. 23	0	0	0.00%	1	3	33.33%	5	14	35.71%	4	9	44.44%
Leg. Dist. 24	0	0	0.00%	0	1	0.00%	6	9	66.67%	2	11	18.18%
Leg. Dist. 25	0	0	0.00%	1	10	10.00%	1	18	5.56%	3	16	18.75%
Leg. Dist. 26	0	0	0.00%	0	4	0.00%	2	16	12.50%	4	19	21.05%
Leg. Dist. 27	0	0	0.00%	0	7	0.00%	3	27	11.11%	1	19	5.26%
Leg. Dist. 28	0	0	0.00%	0	12	0.00%	1	27	3.70%	4	23	17.39%
Leg. Dist. 29	0	0	0.00%	1	7	14.29%	2	20	10.00%	3	27	11.11%
CITY TOTAL:	0	0	0.00%	4	58	6.90%	29	188	15.43%	32	178	17.98%
TOWNS												
Brighton	0	0	0.00%	2	4	50.00%	0	4	0.00%	5	13	38.46%
Chili	0	0	0.00%	0	2	0.00%	2	8	25.00%	5	10	50.00%
Clarkson	0	0	0.00%	0	0	0.00%	0	2	0.00%	0	5	0.00%
East Rochester	0	0	0.00%	0	0	0.00%	0	5	0.00%	1	4	25.00%
Gates	0	0	0.00%	1	2	50.00%	1	13	7.69%	4	17	23.53%
Greece	0	0	0.00%	1	10	10.00%	9	51	17.65%	12	57	21.05%
Hamlin	0	0	0.00%	0	0	0.00%	2	6	33.33%	0	5	0.00%
Henrietta	0	0	0.00%	0	1	0.00%	2	13	15.38%	1	9	11.11%
Irondequoit	0	0	0.00%	0	5	0.00%	7	27	25.93%	7	23	30.43%
Mendon	0	0	0.00%	1	1	100.00%	0	1	0.00%	1	4	25.00%
Ogden	0	0	0.00%	0	3	0.00%	0	4	0.00%	3	14	21.43%
Parma	0	0	0.00%	1	1	100.00%	0	7	0.00%	5	15	33.33%
Penfield	0	0	0.00%	0	2	0.00%	2	6	33.33%	1	15	6.67%
Perinton	0	0	0.00%	0	3	0.00%	1	11	9.09%	4	23	17.39%
Pittsford	0	0	0.00%	0	1	0.00%	1	2	50.00%	0	0	0.00%
Riga	0	0	0.00%	1	1	100.00%	0	3	0.00%	1	6	16.67%
Rush	0	0	0.00%	0	0	0.00%	3	4	75.00%	0	2	0.00%
Sweden	0	0	0.00%	0	1	0.00%	1	6	16.67%	2	8	25.00%
Webster	0	0	0.00%	0	1	0.00%	3	12	25.00%	5	15	33.33%
Wheatland	0	0	0.00%	0	0	0.00%	1	2	50.00%	1	2	50.00%
TOWNS TOTAL:	0	0	0.00%	7	38	18.42%	35	187	18.72%	58	247	23.48%
GRAND TOTAL:	0	0	0.00%	11	96	11.46%	64	375	17.07%	90	425	21.18%

2014 GENERAL ELECTION
WORKING FAMILIES TURNOUT BY AGE

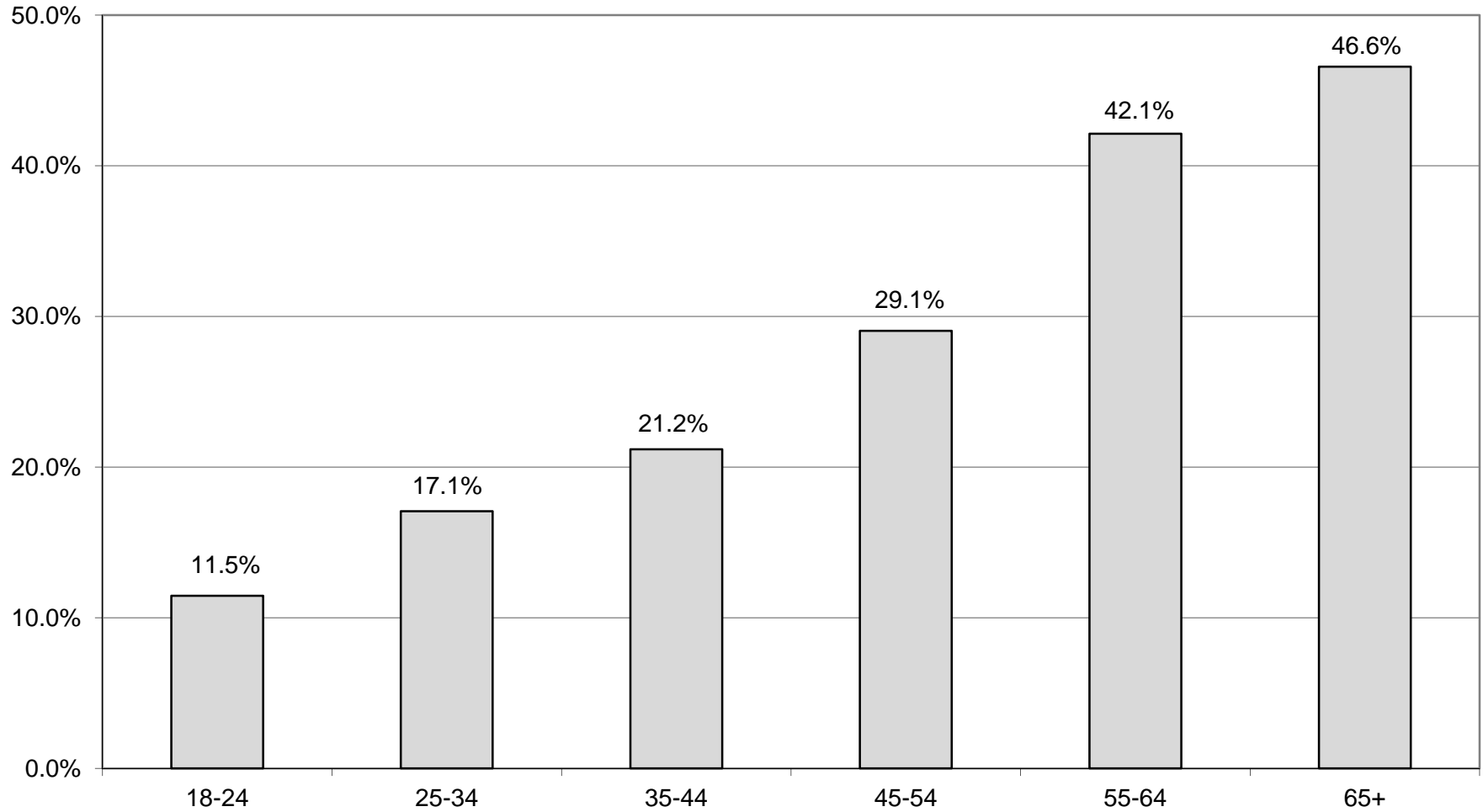
LT/LD SUMMARY
Part 2 of 2

LEGISLATIVE DISTRICT OR TOWN	45-54			55-64			65+		
	VOTED	REGISTERED	TURNOUT	VOTED	REGISTERED	TURNOUT	VOTED	REGISTERED	TURNOUT
CITY									
Leg. Dist. 07	0	0	0.00%	1	1	100.00%	0	0	0.00%
Leg. Dist. 16	0	0	0.00%	0	0	0.00%	0	0	0.00%
Leg. Dist. 21	6	12	50.00%	2	8	25.00%	1	1	100.00%
Leg. Dist. 22	3	17	17.65%	1	8	12.50%	0	3	0.00%
Leg. Dist. 23	4	7	57.14%	4	7	57.14%	3	3	100.00%
Leg. Dist. 24	1	3	33.33%	3	7	42.86%	2	2	100.00%
Leg. Dist. 25	3	13	23.08%	3	9	33.33%	0	2	0.00%
Leg. Dist. 26	3	12	25.00%	2	5	40.00%	1	1	100.00%
Leg. Dist. 27	4	17	23.53%	3	7	42.86%	1	5	20.00%
Leg. Dist. 28	2	24	8.33%	0	5	0.00%	1	2	50.00%
Leg. Dist. 29	1	15	6.67%	1	4	25.00%	1	2	50.00%
CITY TOTAL:	27	120	22.50%	20	61	32.79%	10	21	47.62%
TOWNS									
Brighton	4	12	33.33%	2	2	100.00%	1	2	50.00%
Chili	8	14	57.14%	8	10	80.00%	0	2	0.00%
Clarkson	0	1	0.00%	2	5	40.00%	0	0	0.00%
East Rochester	2	8	25.00%	0	3	0.00%	0	0	0.00%
Gates	4	20	20.00%	6	11	54.55%	4	10	40.00%
Greece	11	57	19.30%	13	28	46.43%	4	10	40.00%
Hamlin	6	8	75.00%	0	1	0.00%	0	0	0.00%
Henrietta	5	17	29.41%	2	11	18.18%	2	2	100.00%
Irondequoit	4	21	19.05%	5	10	50.00%	1	4	25.00%
Mendon	1	1	100.00%	1	2	50.00%	0	0	0.00%
Ogden	5	14	35.71%	2	6	33.33%	1	1	100.00%
Parma	7	12	58.33%	5	10	50.00%	2	3	66.67%
Penfield	4	9	44.44%	3	8	37.50%	2	5	40.00%
Perinton	3	12	25.00%	5	7	71.43%	2	3	66.67%
Pittsford	2	4	50.00%	3	4	75.00%	1	3	33.33%
Riga	0	2	0.00%	1	3	33.33%	0	0	0.00%
Rush	2	2	100.00%	1	3	33.33%	0	0	0.00%
Sweden	1	5	20.00%	2	6	33.33%	1	1	100.00%
Webster	7	17	41.18%	2	6	33.33%	3	6	50.00%
Wheatland	1	2	50.00%	0	0	0.00%	0	0	0.00%
TOWNS TOTAL:	77	238	32.35%	63	136	46.32%	24	52	46.15%
GRAND TOTAL:	104	358	29.05%	83	197	42.13%	34	73	46.58%

WORKING FAMILIES TURNOUT - TOTAL AND GENDER 2014 GENERAL ELECTION



WORKING FAMILIES TURNOUT BY AGE GROUP 2014 GENERAL ELECTION



INDEPENDENCE SUMMARY

2014 GENERAL ELECTION
INDEPENDENCE TURNOUT BY GENDER

LT/LD SUMMARY

LEGISLATIVE DISTRICT OR TOWN	TOTAL VOTERS			MALES			FEMALES		
	VOTED	REGISTERED	TURNOUT	VOTED	REGISTERED	TURNOUT	VOTED	REGISTERED	TURNOUT
CITY									
Leg. Dist. 07	24	64	37.50%	11	32	34.38%	13	32	40.63%
Leg. Dist. 16	2	2	100.00%	1	1	100.00%	1	1	100.00%
Leg. Dist. 21	169	462	36.58%	73	204	35.78%	96	258	37.21%
Leg. Dist. 22	39	253	15.42%	22	113	19.47%	17	140	12.14%
Leg. Dist. 23	266	618	43.04%	142	309	45.95%	124	309	40.13%
Leg. Dist. 24	129	340	37.94%	72	177	40.68%	57	163	34.97%
Leg. Dist. 25	77	320	24.06%	46	162	28.40%	31	158	19.62%
Leg. Dist. 26	143	378	37.83%	70	178	39.33%	73	200	36.50%
Leg. Dist. 27	119	410	29.02%	65	223	29.15%	54	187	28.88%
Leg. Dist. 28	78	314	24.84%	45	170	26.47%	33	144	22.92%
Leg. Dist. 29	88	328	26.83%	52	175	29.71%	36	153	23.53%
CITY TOTAL:	1,134	3,489	32.50%	599	1,744	34.35%	535	1,745	30.66%
TOWNS									
Brighton	370	1,002	36.93%	177	458	38.65%	193	544	35.48%
Chili	326	850	38.35%	154	407	37.84%	172	443	38.83%
Clarkson	81	220	36.82%	47	111	42.34%	34	109	31.19%
East Rochester	85	256	33.20%	38	128	29.69%	47	128	36.72%
Gates	315	842	37.41%	166	409	40.59%	149	433	34.41%
Greece	1,106	2,990	36.99%	578	1,404	41.17%	528	1,586	33.29%
Hamlin	115	279	41.22%	55	132	41.67%	60	147	40.82%
Henrietta	390	1,047	37.25%	182	474	38.40%	208	573	36.30%
Irondequoit	713	1,724	41.36%	342	799	42.80%	371	925	40.11%
Mendon	145	347	41.79%	74	165	44.85%	71	182	39.01%
Ogden	254	642	39.56%	137	322	42.55%	117	320	36.56%
Parma	210	546	38.46%	116	258	44.96%	94	288	32.64%
Penfield	597	1,378	43.32%	302	653	46.25%	295	725	40.69%
Perinton	744	1,629	45.67%	352	735	47.89%	392	894	43.85%
Pittsford	398	881	45.18%	178	389	45.76%	220	492	44.72%
Riga	82	207	39.61%	42	97	43.30%	40	110	36.36%
Rush	55	112	49.11%	28	50	56.00%	27	62	43.55%
Sweden	138	351	39.32%	76	168	45.24%	62	183	33.88%
Webster	596	1,528	39.01%	319	746	42.76%	277	782	35.42%
Wheatland	78	168	46.43%	44	90	48.89%	34	78	43.59%
TOWNS TOTAL:	6,798	16,999	39.99%	3,407	7,995	42.61%	3,391	9,004	37.66%
GRAND TOTAL:	7,932	20,488	38.72%	4,006	9,739	41.13%	3,926	10,749	36.52%

2014 GENERAL ELECTION
INDEPENDENCE TURNOUT BY AGE

LT/LD SUMMARY
Part 1 of 2

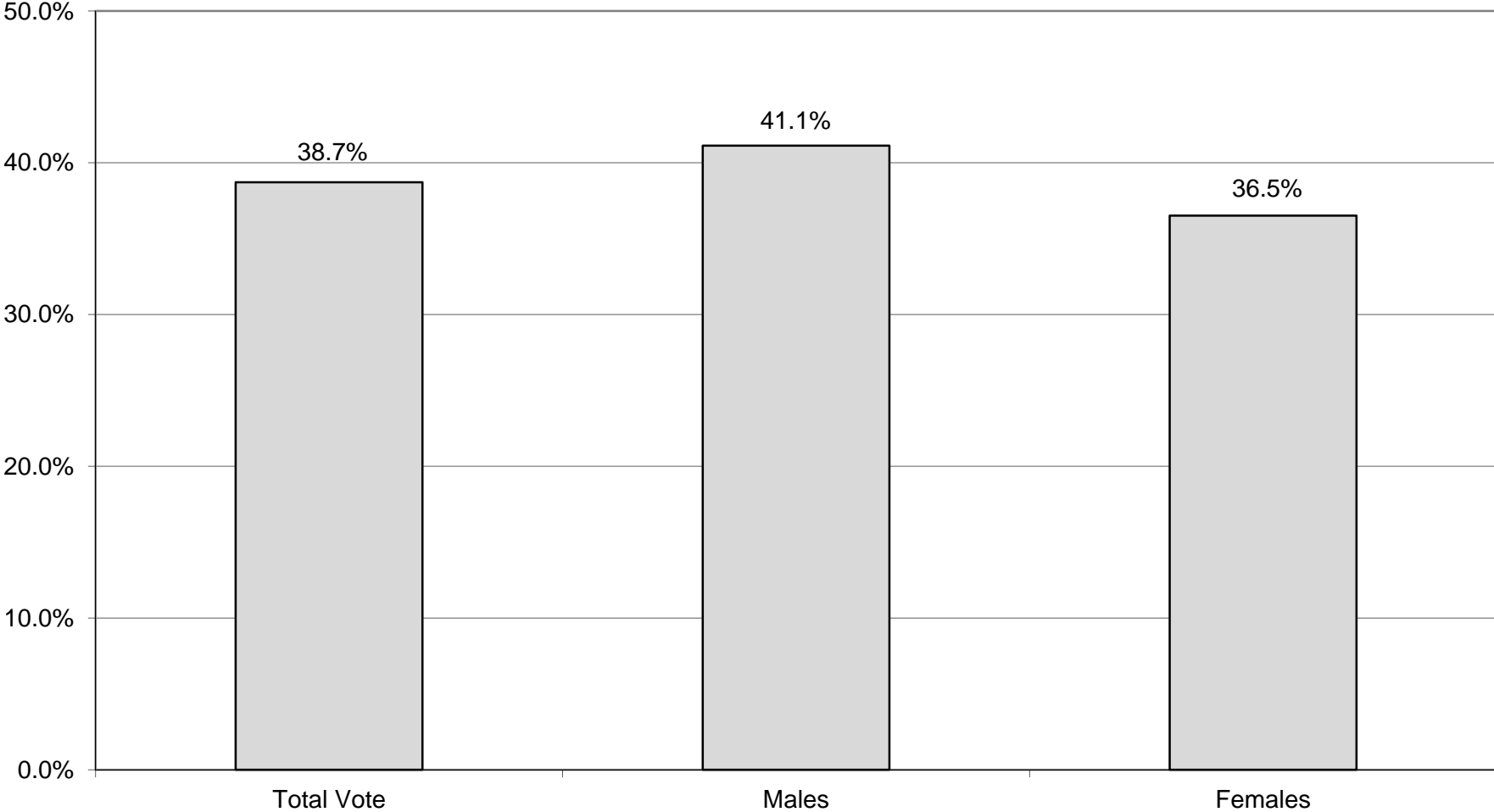
LEGISLATIVE DISTRICT OR TOWN	NDOB			18-24			25-34			35-44		
	VOTED	REGISTERED	TURNOUT	VOTED	REGISTERED	TURNOUT	VOTED	REGISTERED	TURNOUT	VOTED	REGISTERED	TURNOUT
CITY												
Leg. Dist. 07	0	0	0.00%	1	2	50.00%	2	10	20.00%	6	7	85.71%
Leg. Dist. 16	0	0	0.00%	0	0	0.00%	0	0	0.00%	0	0	0.00%
Leg. Dist. 21	0	0	0.00%	6	55	10.91%	40	132	30.30%	35	101	34.65%
Leg. Dist. 22	0	0	0.00%	2	49	4.08%	8	63	12.70%	4	46	8.70%
Leg. Dist. 23	0	0	0.00%	12	54	22.22%	71	227	31.28%	49	111	44.14%
Leg. Dist. 24	1	1	100.00%	3	18	16.67%	31	121	25.62%	29	74	39.19%
Leg. Dist. 25	0	0	0.00%	4	48	8.33%	12	88	13.64%	17	64	26.56%
Leg. Dist. 26	0	0	0.00%	1	26	3.85%	20	84	23.81%	22	77	28.57%
Leg. Dist. 27	0	0	0.00%	11	51	21.57%	14	98	14.29%	18	77	23.38%
Leg. Dist. 28	0	0	0.00%	5	31	16.13%	8	58	13.79%	12	73	16.44%
Leg. Dist. 29	0	0	0.00%	3	36	8.33%	12	86	13.95%	11	61	18.03%
CITY TOTAL:	1	1	100.00%	48	370	12.97%	218	967	22.54%	203	691	29.38%
TOWNS												
Brighton	0	0	0.00%	9	85	10.59%	40	236	16.95%	52	178	29.21%
Chili	0	0	0.00%	24	97	24.74%	37	182	20.33%	61	178	34.27%
Clarkson	0	0	0.00%	2	25	8.00%	10	34	29.41%	19	40	47.50%
East Rochester	0	0	0.00%	5	30	16.67%	13	61	21.31%	11	40	27.50%
Gates	0	0	0.00%	16	70	22.86%	33	177	18.64%	54	160	33.75%
Greece	0	0	0.00%	61	321	19.00%	122	640	19.06%	155	539	28.76%
Hamlin	0	0	0.00%	9	32	28.13%	16	55	29.09%	14	50	28.00%
Henrietta	0	0	0.00%	14	108	12.96%	59	226	26.11%	70	200	35.00%
Irondequoit	0	0	0.00%	18	150	12.00%	92	406	22.66%	150	352	42.61%
Mendon	0	0	0.00%	10	53	18.87%	10	56	17.86%	19	52	36.54%
Ogden	0	0	0.00%	8	55	14.55%	35	144	24.31%	45	141	31.91%
Parma	0	0	0.00%	9	64	14.06%	32	100	32.00%	37	121	30.58%
Penfield	0	0	0.00%	23	153	15.03%	54	273	19.78%	110	259	42.47%
Perinton	0	0	0.00%	23	162	14.20%	76	291	26.12%	120	272	44.12%
Pittsford	0	0	0.00%	17	119	14.29%	30	130	23.08%	67	152	44.08%
Riga	0	0	0.00%	2	13	15.38%	10	48	20.83%	14	39	35.90%
Rush	0	0	0.00%	2	11	18.18%	0	12	0.00%	8	21	38.10%
Sweden	0	0	0.00%	4	32	12.50%	14	68	20.59%	22	61	36.07%
Webster	0	0	0.00%	23	132	17.42%	66	282	23.40%	89	297	29.97%
Wheatland	0	0	0.00%	4	12	33.33%	11	37	29.73%	11	33	33.33%
TOWNS TOTAL:	0	0	0.00%	283	1,724	16.42%	760	3,458	21.98%	1,128	3,185	35.42%
GRAND TOTAL:	1	1	100.00%	331	2,094	15.81%	978	4,425	22.10%	1,331	3,876	34.34%

2014 GENERAL ELECTION
INDEPENDENCE TURNOUT BY AGE

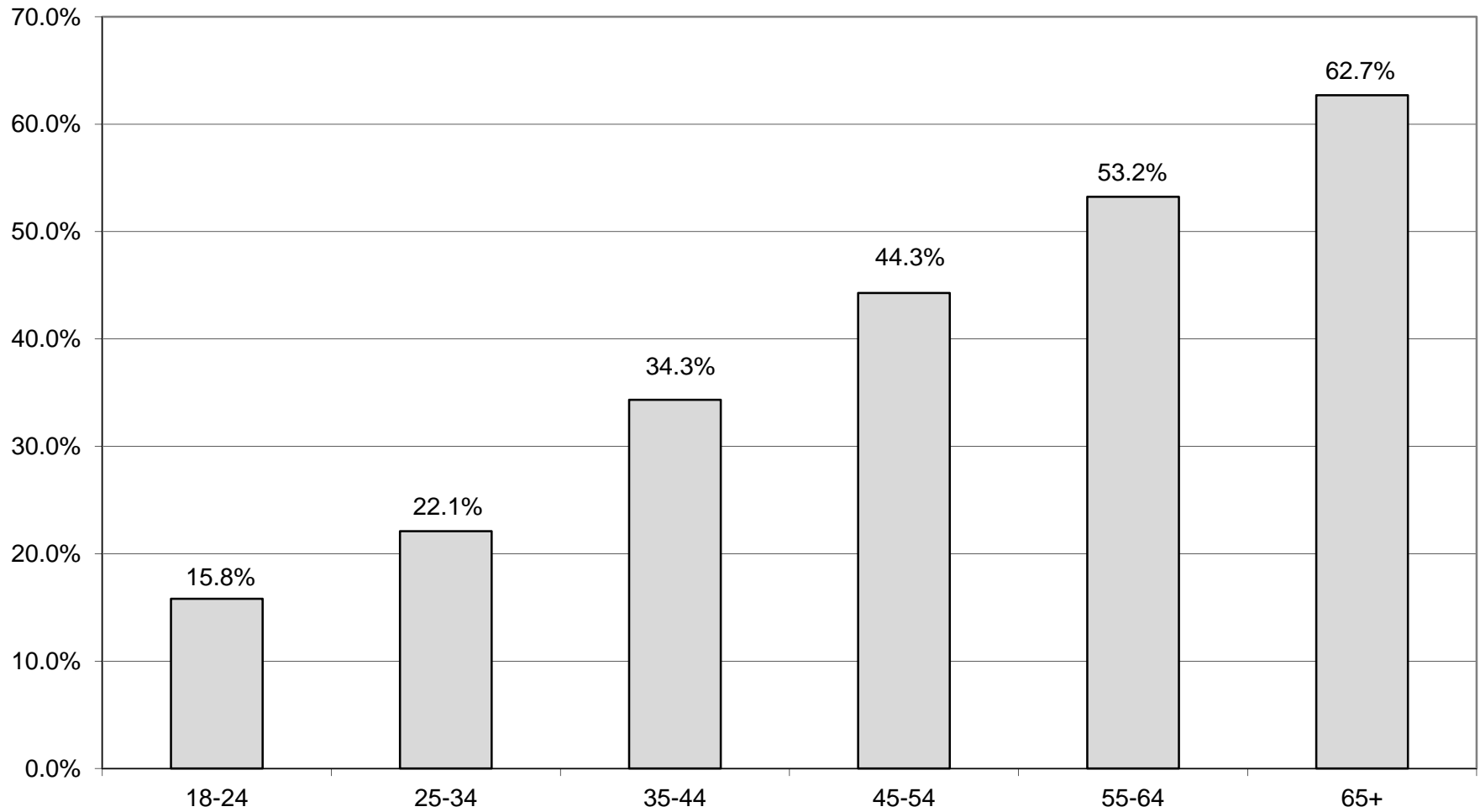
LT/LD SUMMARY
Part 2 of 2

LEGISLATIVE DISTRICT OR TOWN	45-54			55-64			65+		
	VOTED	REGISTERED	TURNOUT	VOTED	REGISTERED	TURNOUT	VOTED	REGISTERED	TURNOUT
CITY									
Leg. Dist. 07	3	10	30.00%	4	15	26.67%	8	20	40.00%
Leg. Dist. 16	0	0	0.00%	0	0	0.00%	2	2	100.00%
Leg. Dist. 21	32	70	45.71%	32	61	52.46%	24	43	55.81%
Leg. Dist. 22	4	37	10.81%	12	34	35.29%	9	24	37.50%
Leg. Dist. 23	57	105	54.29%	52	78	66.67%	25	43	58.14%
Leg. Dist. 24	29	60	48.33%	18	40	45.00%	18	26	69.23%
Leg. Dist. 25	18	53	33.96%	11	36	30.56%	15	31	48.39%
Leg. Dist. 26	37	76	48.68%	33	65	50.77%	30	50	60.00%
Leg. Dist. 27	20	74	27.03%	35	71	49.30%	21	39	53.85%
Leg. Dist. 28	18	70	25.71%	26	57	45.61%	9	25	36.00%
Leg. Dist. 29	21	56	37.50%	19	55	34.55%	22	34	64.71%
CITY TOTAL:	239	611	39.12%	242	512	47.27%	183	337	54.30%
TOWNS									
Brighton	78	168	46.43%	71	152	46.71%	120	183	65.57%
Chili	68	149	45.64%	64	114	56.14%	72	130	55.38%
Clarkson	22	60	36.67%	13	32	40.63%	15	29	51.72%
East Rochester	19	49	38.78%	21	45	46.67%	16	31	51.61%
Gates	55	150	36.67%	67	133	50.38%	90	152	59.21%
Greece	233	572	40.73%	221	430	51.40%	314	488	64.34%
Hamlin	27	67	40.30%	29	44	65.91%	20	31	64.52%
Henrietta	83	219	37.90%	82	149	55.03%	82	145	56.55%
Irondequoit	154	327	47.09%	158	265	59.62%	141	224	62.95%
Mendon	39	76	51.32%	40	60	66.67%	27	50	54.00%
Ogden	66	134	49.25%	54	91	59.34%	46	77	59.74%
Parma	46	101	45.54%	38	83	45.78%	48	77	62.34%
Penfield	150	287	52.26%	114	198	57.58%	146	208	70.19%
Perinton	172	356	48.31%	143	242	59.09%	210	306	68.63%
Pittsford	110	203	54.19%	75	128	58.59%	99	149	66.44%
Riga	21	42	50.00%	15	39	38.46%	20	26	76.92%
Rush	16	32	50.00%	11	14	78.57%	18	22	81.82%
Sweden	37	77	48.05%	31	63	49.21%	30	50	60.00%
Webster	139	332	41.87%	126	241	52.28%	153	244	62.70%
Wheatland	18	35	51.43%	18	32	56.25%	16	19	84.21%
TOWNS TOTAL:	1,553	3,436	45.20%	1,391	2,555	54.44%	1,683	2,641	63.73%
GRAND TOTAL:	1,792	4,047	44.28%	1,633	3,067	53.24%	1,866	2,978	62.66%

INDEPENDENCE TURNOUT - TOTAL AND GENDER 2014 GENERAL ELECTION



INDEPENDENCE TURNOUT BY AGE GROUP 2014 GENERAL ELECTION



GREEN SUMMARY

2014 GENERAL ELECTION
GREEN TURNOUT BY GENDER

LT/LD SUMMARY

LEGISLATIVE DISTRICT OR TOWN	TOTAL VOTERS			MALES			FEMALES		
	VOTED	REGISTERED	TURNOUT	VOTED	REGISTERED	TURNOUT	VOTED	REGISTERED	TURNOUT
CITY									
Leg. Dist. 07	3	6	50.00%	3	4	75.00%	0	2	0.00%
Leg. Dist. 16	0	0	0.00%	0	0	0.00%	0	0	0.00%
Leg. Dist. 21	30	54	55.56%	19	31	61.29%	11	23	47.83%
Leg. Dist. 22	7	19	36.84%	4	12	33.33%	3	7	42.86%
Leg. Dist. 23	55	95	57.89%	36	52	69.23%	19	43	44.19%
Leg. Dist. 24	42	82	51.22%	27	51	52.94%	15	31	48.39%
Leg. Dist. 25	30	53	56.60%	20	35	57.14%	10	18	55.56%
Leg. Dist. 26	6	14	42.86%	1	4	25.00%	5	10	50.00%
Leg. Dist. 27	17	35	48.57%	8	17	47.06%	9	18	50.00%
Leg. Dist. 28	7	26	26.92%	6	14	42.86%	1	12	8.33%
Leg. Dist. 29	9	20	45.00%	5	11	45.45%	4	9	44.44%
CITY TOTAL:	206	404	50.99%	129	231	55.84%	77	173	44.51%
TOWNS									
Brighton	44	89	49.44%	29	53	54.72%	15	36	41.67%
Chili	13	34	38.24%	7	18	38.89%	6	16	37.50%
Clarkson	1	2	50.00%	1	1	100.00%	0	1	0.00%
East Rochester	5	14	35.71%	1	8	12.50%	4	6	66.67%
Gates	17	32	53.13%	11	18	61.11%	6	14	42.86%
Greece	32	107	29.91%	23	78	29.49%	9	29	31.03%
Hamlin	8	17	47.06%	6	10	60.00%	2	7	28.57%
Henrietta	20	41	48.78%	14	27	51.85%	6	14	42.86%
Irondequoit	48	115	41.74%	33	75	44.00%	15	40	37.50%
Mendon	12	26	46.15%	7	16	43.75%	5	10	50.00%
Ogden	6	26	23.08%	3	16	18.75%	3	10	30.00%
Parma	7	14	50.00%	5	10	50.00%	2	4	50.00%
Penfield	8	43	18.60%	5	28	17.86%	3	15	20.00%
Perinton	32	96	33.33%	21	56	37.50%	11	40	27.50%
Pittsford	14	41	34.15%	9	28	32.14%	5	13	38.46%
Riga	3	6	50.00%	1	3	33.33%	2	3	66.67%
Rush	4	7	57.14%	3	4	75.00%	1	3	33.33%
Sweden	14	19	73.68%	7	9	77.78%	7	10	70.00%
Webster	13	48	27.08%	5	27	18.52%	8	21	38.10%
Wheatland	2	5	40.00%	0	3	0.00%	2	2	100.00%
TOWNS TOTAL:	303	782	38.75%	191	488	39.14%	112	294	38.10%
GRAND TOTAL:	509	1,186	42.92%	320	719	44.51%	189	467	40.47%

2014 GENERAL ELECTION
GREEN TURNOUT BY AGE

LT/LD SUMMARY
Part 1 of 2

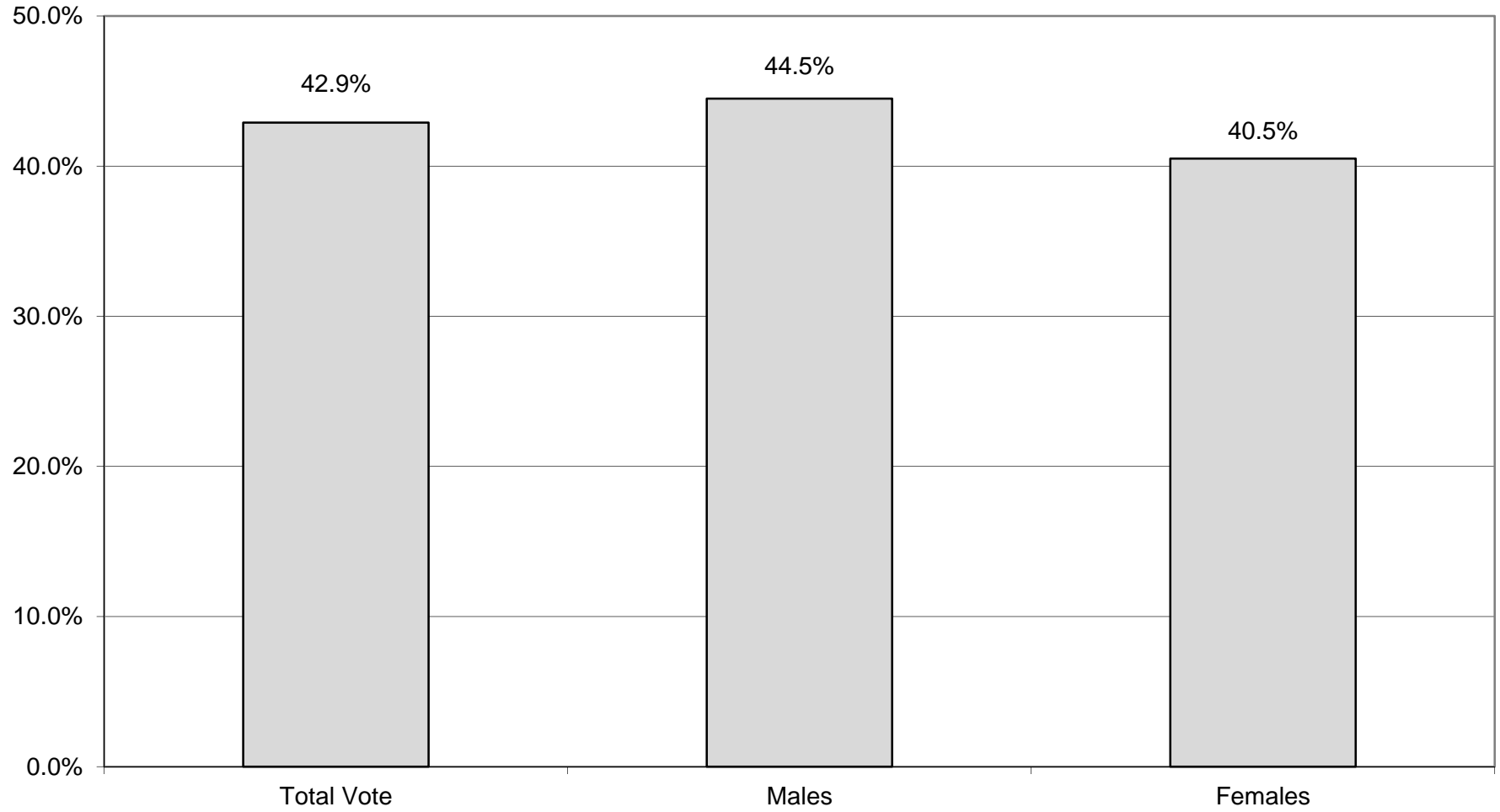
LEGISLATIVE DISTRICT OR TOWN	NDOB			18-24			25-34			35-44		
	VOTED	REGISTERED	TURNOUT	VOTED	REGISTERED	TURNOUT	VOTED	REGISTERED	TURNOUT	VOTED	REGISTERED	TURNOUT
CITY												
Leg. Dist. 07	0	0	0.00%	0	0	0.00%	1	3	33.33%	1	1	100.00%
Leg. Dist. 16	0	0	0.00%	0	0	0.00%	0	0	0.00%	0	0	0.00%
Leg. Dist. 21	0	0	0.00%	0	2	0.00%	12	23	52.17%	8	13	61.54%
Leg. Dist. 22	0	0	0.00%	1	7	14.29%	2	7	28.57%	0	0	0.00%
Leg. Dist. 23	0	0	0.00%	4	10	40.00%	13	31	41.94%	20	30	66.67%
Leg. Dist. 24	0	0	0.00%	0	1	0.00%	10	32	31.25%	15	22	68.18%
Leg. Dist. 25	0	0	0.00%	2	6	33.33%	13	23	56.52%	4	9	44.44%
Leg. Dist. 26	0	0	0.00%	1	1	100.00%	2	6	33.33%	0	3	0.00%
Leg. Dist. 27	0	0	0.00%	2	8	25.00%	5	14	35.71%	3	5	60.00%
Leg. Dist. 28	0	0	0.00%	0	3	0.00%	2	13	15.38%	1	4	25.00%
Leg. Dist. 29	0	0	0.00%	1	4	25.00%	2	5	40.00%	2	3	66.67%
CITY TOTAL:	0	0	0.00%	11	42	26.19%	62	157	39.49%	54	90	60.00%
TOWNS												
Brighton	0	0	0.00%	3	8	37.50%	5	20	25.00%	13	23	56.52%
Chili	0	0	0.00%	1	7	14.29%	2	9	22.22%	3	8	37.50%
Clarkson	0	0	0.00%	1	1	100.00%	0	0	0.00%	0	0	0.00%
East Rochester	0	0	0.00%	1	3	33.33%	0	4	0.00%	3	4	75.00%
Gates	0	0	0.00%	2	3	66.67%	4	12	33.33%	2	4	50.00%
Greece	0	0	0.00%	0	10	0.00%	11	56	19.64%	11	20	55.00%
Hamlin	0	0	0.00%	0	3	0.00%	4	10	40.00%	2	2	100.00%
Henrietta	0	0	0.00%	1	8	12.50%	6	14	42.86%	8	12	66.67%
Irondequoit	0	0	0.00%	5	16	31.25%	9	42	21.43%	11	30	36.67%
Mendon	0	0	0.00%	3	8	37.50%	3	10	30.00%	3	3	100.00%
Ogden	0	0	0.00%	1	5	20.00%	2	8	25.00%	3	8	37.50%
Parma	0	0	0.00%	0	3	0.00%	2	4	50.00%	3	5	60.00%
Penfield	0	0	0.00%	0	11	0.00%	4	15	26.67%	2	11	18.18%
Perinton	0	0	0.00%	3	23	13.04%	9	40	22.50%	8	17	47.06%
Pittsford	0	0	0.00%	2	9	22.22%	2	11	18.18%	2	7	28.57%
Riga	0	0	0.00%	0	0	0.00%	0	2	0.00%	1	2	50.00%
Rush	0	0	0.00%	0	1	0.00%	0	1	0.00%	1	2	50.00%
Sweden	0	0	0.00%	1	1	100.00%	1	4	25.00%	5	7	71.43%
Webster	0	0	0.00%	2	6	33.33%	5	24	20.83%	2	8	25.00%
Wheatland	0	0	0.00%	0	1	0.00%	1	3	33.33%	1	1	100.00%
TOWNS TOTAL:	0	0	0.00%	26	127	20.47%	70	289	24.22%	84	174	48.28%
GRAND TOTAL:	0	0	0.00%	37	169	21.89%	132	446	29.60%	138	264	52.27%

2014 GENERAL ELECTION
GREEN TURNOUT BY AGE

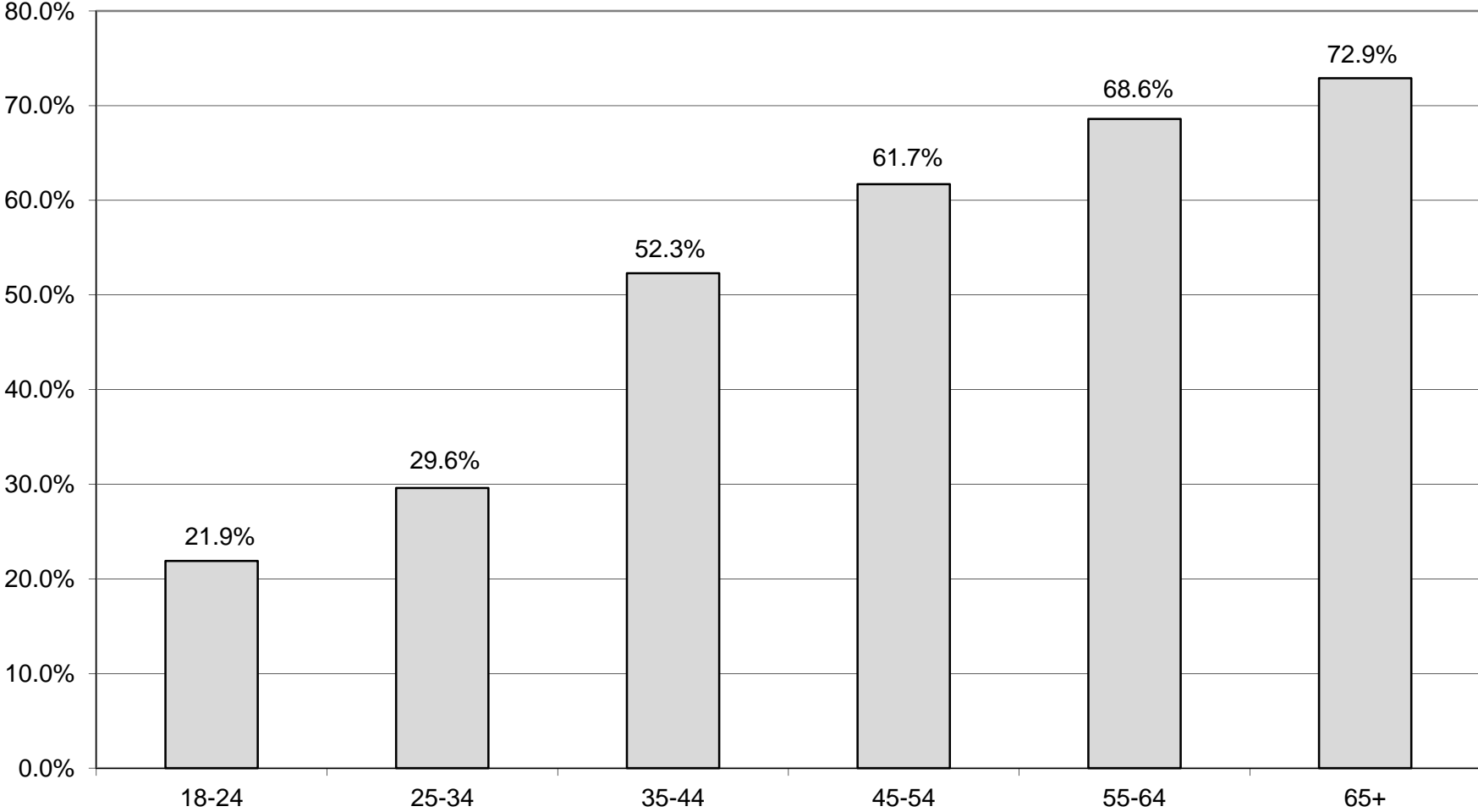
LT/LD SUMMARY
Part 2 of 2

LEGISLATIVE DISTRICT OR TOWN	45-54			55-64			65+		
	VOTED	REGISTERED	TURNOUT	VOTED	REGISTERED	TURNOUT	VOTED	REGISTERED	TURNOUT
CITY									
Leg. Dist. 07	0	1	0.00%	1	1	100.00%	0	0	0.00%
Leg. Dist. 16	0	0	0.00%	0	0	0.00%	0	0	0.00%
Leg. Dist. 21	3	6	50.00%	4	5	80.00%	3	5	60.00%
Leg. Dist. 22	2	3	66.67%	1	1	100.00%	1	1	100.00%
Leg. Dist. 23	13	17	76.47%	4	6	66.67%	1	1	100.00%
Leg. Dist. 24	9	14	64.29%	5	10	50.00%	3	3	100.00%
Leg. Dist. 25	2	4	50.00%	7	8	87.50%	2	3	66.67%
Leg. Dist. 26	2	2	100.00%	1	2	50.00%	0	0	0.00%
Leg. Dist. 27	3	3	100.00%	4	5	80.00%	0	0	0.00%
Leg. Dist. 28	2	3	66.67%	2	3	66.67%	0	0	0.00%
Leg. Dist. 29	2	3	66.67%	1	3	33.33%	1	2	50.00%
CITY TOTAL:	38	56	67.86%	30	44	68.18%	11	15	73.33%
TOWNS									
Brighton	14	23	60.87%	6	9	66.67%	3	6	50.00%
Chili	3	4	75.00%	2	4	50.00%	2	2	100.00%
Clarkson	0	0	0.00%	0	0	0.00%	0	1	0.00%
East Rochester	1	2	50.00%	0	1	0.00%	0	0	0.00%
Gates	6	10	60.00%	2	2	100.00%	1	1	100.00%
Greece	1	7	14.29%	6	9	66.67%	3	5	60.00%
Hamlin	1	1	100.00%	1	1	100.00%	0	0	0.00%
Henrietta	2	3	66.67%	1	2	50.00%	2	2	100.00%
Irondequoit	10	12	83.33%	10	12	83.33%	3	3	100.00%
Mendon	3	4	75.00%	0	1	0.00%	0	0	0.00%
Ogden	0	4	0.00%	0	1	0.00%	0	0	0.00%
Parma	2	2	100.00%	0	0	0.00%	0	0	0.00%
Penfield	0	4	0.00%	1	1	100.00%	1	1	100.00%
Perinton	4	6	66.67%	4	6	66.67%	4	4	100.00%
Pittsford	5	9	55.56%	1	3	33.33%	2	2	100.00%
Riga	0	0	0.00%	2	2	100.00%	0	0	0.00%
Rush	0	0	0.00%	2	2	100.00%	1	1	100.00%
Sweden	4	4	100.00%	2	2	100.00%	1	1	100.00%
Webster	1	3	33.33%	2	3	66.67%	1	4	25.00%
Wheatland	0	0	0.00%	0	0	0.00%	0	0	0.00%
TOWNS TOTAL:	57	98	58.16%	42	61	68.85%	24	33	72.73%
GRAND TOTAL:	95	154	61.69%	72	105	68.57%	35	48	72.92%

GREEN TURNOUT - TOTAL AND GENDER 2014 GENERAL ELECTION



GREEN TURNOUT BY AGE GROUP 2014 GENERAL ELECTION



BLANKS SUMMARY

2014 GENERAL ELECTION
BLANK TURNOUT BY GENDER

LT/LD SUMMARY

LEGISLATIVE DISTRICT OR TOWN	TOTAL VOTERS			MALES			FEMALES		
	VOTED	REGISTERED	TURNOUT	VOTED	REGISTERED	TURNOUT	VOTED	REGISTERED	TURNOUT
CITY									
Leg. Dist. 07	120	286	41.96%	64	145	44.14%	56	141	39.72%
Leg. Dist. 16	1	2	50.00%	0	0	0.00%	1	2	50.00%
Leg. Dist. 21	768	2,438	31.50%	409	1,150	35.57%	359	1,288	27.87%
Leg. Dist. 22	179	1,799	9.95%	104	743	14.00%	75	1,056	7.10%
Leg. Dist. 23	1,201	2,883	41.66%	692	1,514	45.71%	509	1,369	37.18%
Leg. Dist. 24	682	1,728	39.47%	387	897	43.14%	295	831	35.50%
Leg. Dist. 25	360	1,790	20.11%	194	883	21.97%	166	907	18.30%
Leg. Dist. 26	582	1,776	32.77%	297	851	34.90%	285	925	30.81%
Leg. Dist. 27	473	2,084	22.70%	247	993	24.87%	226	1,091	20.71%
Leg. Dist. 28	317	1,907	16.62%	166	816	20.34%	151	1,091	13.84%
Leg. Dist. 29	374	2,098	17.83%	196	922	21.26%	178	1,176	15.14%
CITY TOTAL:	5,057	18,791	26.91%	2,756	8,914	30.92%	2,301	9,877	23.30%
TOWNS									
Brighton	2,292	5,220	43.91%	1,189	2,585	46.00%	1,103	2,635	41.86%
Chili	1,806	4,661	38.75%	959	2,306	41.59%	847	2,355	35.97%
Clarkson	397	916	43.34%	210	427	49.18%	187	489	38.24%
East Rochester	368	992	37.10%	178	465	38.28%	190	527	36.05%
Gates	1,451	4,181	34.70%	760	1,988	38.23%	691	2,193	31.51%
Greece	5,578	15,438	36.13%	2,906	7,219	40.25%	2,672	8,219	32.51%
Hamlin	478	1,298	36.83%	266	630	42.22%	212	668	31.74%
Henrietta	2,048	5,409	37.86%	1,109	2,739	40.49%	939	2,670	35.17%
Irondequoit	3,783	8,576	44.11%	1,947	4,092	47.58%	1,836	4,484	40.95%
Mendon	750	1,557	48.17%	390	778	50.13%	360	779	46.21%
Ogden	1,351	3,227	41.87%	726	1,565	46.39%	625	1,662	37.61%
Parma	1,034	2,726	37.93%	546	1,349	40.47%	488	1,377	35.44%
Penfield	3,088	6,681	46.22%	1,637	3,292	49.73%	1,451	3,389	42.81%
Perinton	4,002	8,467	47.27%	2,070	4,193	49.37%	1,932	4,274	45.20%
Pittsford	2,309	4,989	46.28%	1,167	2,437	47.89%	1,142	2,552	44.75%
Riga	413	945	43.70%	221	469	47.12%	192	476	40.34%
Rush	345	660	52.27%	177	335	52.84%	168	325	51.69%
Sweden	626	1,550	40.39%	313	717	43.65%	313	833	37.58%
Webster	3,345	7,765	43.08%	1,749	3,734	46.84%	1,596	4,031	39.59%
Wheatland	312	767	40.68%	170	374	45.45%	142	393	36.13%
TOWNS TOTAL:	35,776	86,025	41.59%	18,690	41,694	44.83%	17,086	44,331	38.54%
GRAND TOTAL:	40,833	104,816	38.96%	21,446	50,608	42.38%	19,387	54,208	35.76%

2014 GENERAL ELECTION
BLANK TURNOUT BY AGE

LT/LD SUMMARY
Part 1 of 2

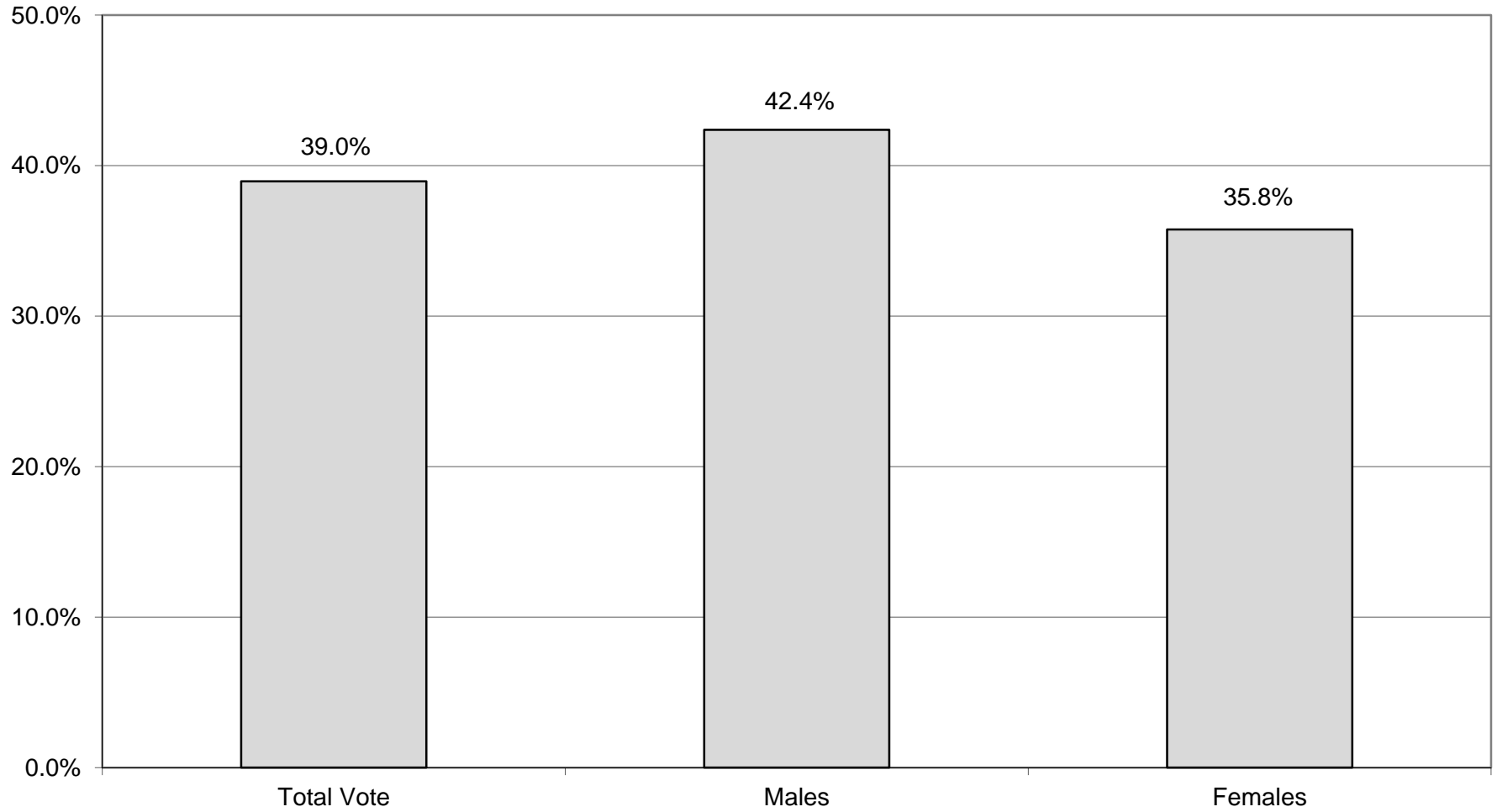
LEGISLATIVE DISTRICT OR TOWN CITY	NDOB			18-24			25-34			35-44		
	VOTED	REGISTERED	TURNOUT	VOTED	REGISTERED	TURNOUT	VOTED	REGISTERED	TURNOUT	VOTED	REGISTERED	TURNOUT
Leg. Dist. 07	0	0	0.00%	5	20	25.00%	11	44	25.00%	11	41	26.83%
Leg. Dist. 16	0	0	0.00%	0	0	0.00%	0	1	0.00%	0	0	0.00%
Leg. Dist. 21	3	5	60.00%	17	289	5.88%	137	652	21.01%	140	462	30.30%
Leg. Dist. 22	1	4	25.00%	13	340	3.82%	19	460	4.13%	24	357	6.72%
Leg. Dist. 23	4	5	80.00%	34	232	14.66%	246	918	26.80%	202	479	42.17%
Leg. Dist. 24	3	3	100.00%	16	138	11.59%	169	572	29.55%	111	289	38.41%
Leg. Dist. 25	1	1	100.00%	12	304	3.95%	80	525	15.24%	55	310	17.74%
Leg. Dist. 26	1	2	50.00%	16	143	11.19%	71	398	17.84%	77	319	24.14%
Leg. Dist. 27	3	5	60.00%	30	335	8.96%	55	479	11.48%	54	372	14.52%
Leg. Dist. 28	1	4	25.00%	13	290	4.48%	28	474	5.91%	41	361	11.36%
Leg. Dist. 29	1	4	25.00%	12	337	3.56%	38	494	7.69%	41	389	10.54%
CITY TOTAL:	18	33	54.55%	168	2,428	6.92%	854	5,017	17.02%	756	3,379	22.37%
TOWNS												
Brighton	14	16	87.50%	65	412	15.78%	203	924	21.97%	256	763	33.55%
Chili	5	12	41.67%	56	409	13.69%	162	926	17.49%	220	747	29.45%
Clarkson	0	0	0.00%	12	75	16.00%	35	153	22.88%	47	165	28.48%
East Rochester	1	3	33.33%	10	109	9.17%	44	201	21.89%	37	154	24.03%
Gates	1	3	33.33%	49	334	14.67%	143	831	17.21%	162	688	23.55%
Greece	20	39	51.28%	169	1,460	11.58%	467	2,804	16.65%	468	2,201	21.26%
Hamlin	0	1	0.00%	17	128	13.28%	38	216	17.59%	52	203	25.62%
Henrietta	5	7	71.43%	51	452	11.28%	204	1,012	20.16%	246	921	26.71%
Irondequoit	21	38	55.26%	122	665	18.35%	341	1,539	22.16%	435	1,361	31.96%
Mendon	1	1	100.00%	19	191	9.95%	34	193	17.62%	86	200	43.00%
Ogden	8	9	88.89%	53	263	20.15%	137	564	24.29%	142	517	27.47%
Parma	1	2	50.00%	39	276	14.13%	90	476	18.91%	102	407	25.06%
Penfield	12	19	63.16%	84	528	15.91%	169	978	17.28%	344	1,003	34.30%
Perinton	3	8	37.50%	133	955	13.93%	255	1,194	21.36%	407	1,171	34.76%
Pittsford	4	7	57.14%	72	514	14.01%	121	607	19.93%	250	697	35.87%
Riga	0	0	0.00%	15	86	17.44%	28	140	20.00%	38	124	30.65%
Rush	1	1	100.00%	12	54	22.22%	19	81	23.46%	28	72	38.89%
Sweden	0	0	0.00%	22	135	16.30%	50	276	18.12%	76	253	30.04%
Webster	13	23	56.52%	97	630	15.40%	184	1,085	16.96%	353	1,145	30.83%
Wheatland	0	1	0.00%	10	65	15.38%	39	161	24.22%	29	89	32.58%
TOWNS TOTAL:	110	190	57.89%	1,107	7,741	14.30%	2,763	14,361	19.24%	3,778	12,881	29.33%
GRAND TOTAL:	128	223	57.40%	1,275	10,169	12.54%	3,617	19,378	18.67%	4,534	16,260	27.88%

2014 GENERAL ELECTION
BLANK TURNOUT BY AGE

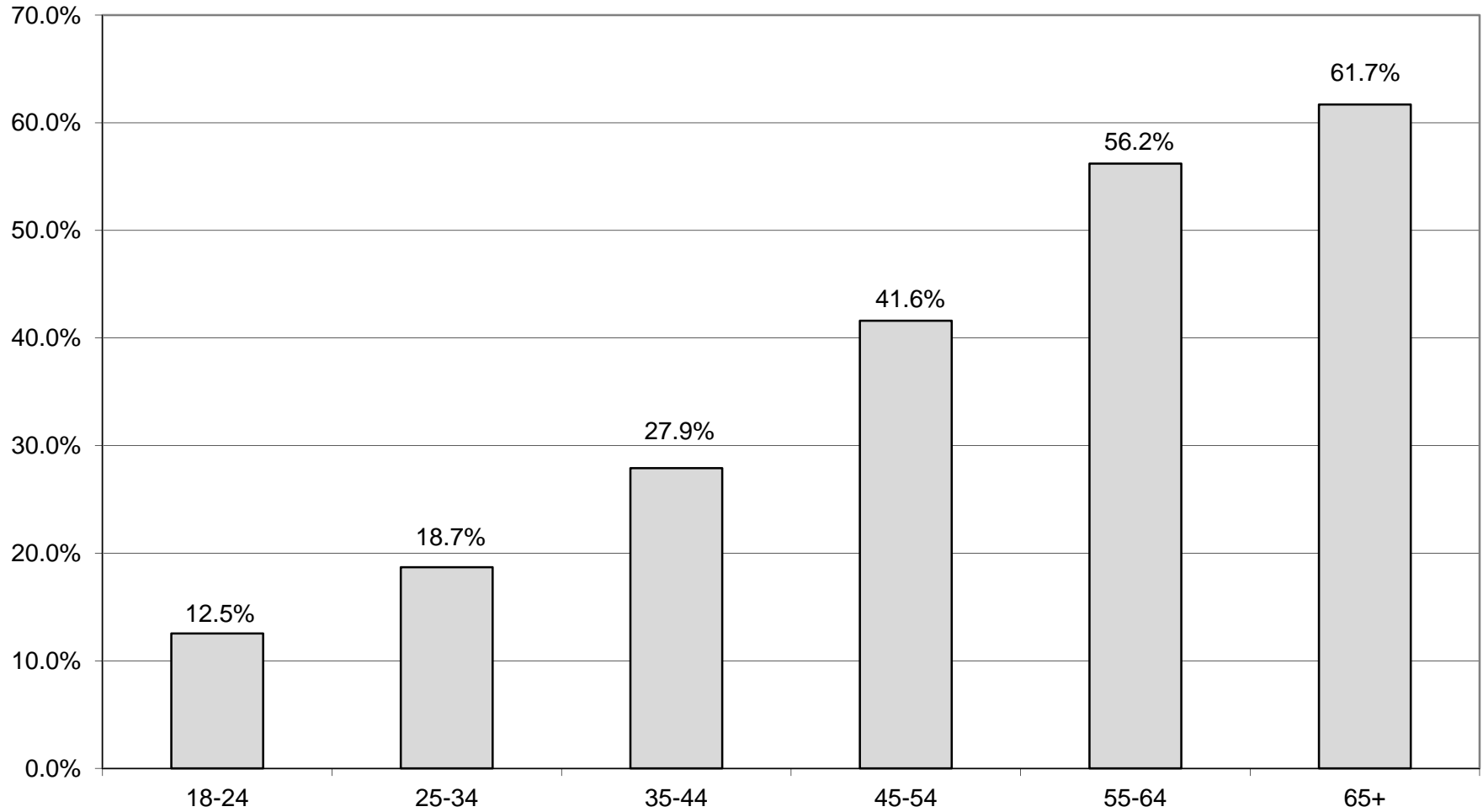
LT/LD SUMMARY
Part 2 of 2

LEGISLATIVE DISTRICT OR TOWN	45-54			55-64			65+		
	VOTED	REGISTERED	TURNOUT	VOTED	REGISTERED	TURNOUT	VOTED	REGISTERED	TURNOUT
CITY									
Leg. Dist. 07	15	46	32.61%	41	73	56.16%	37	62	59.68%
Leg. Dist. 16	0	0	0.00%	0	0	0.00%	1	1	100.00%
Leg. Dist. 21	134	400	33.50%	163	332	49.10%	174	298	58.39%
Leg. Dist. 22	29	281	10.32%	48	188	25.53%	45	169	26.63%
Leg. Dist. 23	197	409	48.17%	251	419	59.90%	267	421	63.42%
Leg. Dist. 24	116	243	47.74%	144	259	55.60%	123	224	54.91%
Leg. Dist. 25	63	251	25.10%	67	210	31.90%	82	189	43.39%
Leg. Dist. 26	111	296	37.50%	190	377	50.40%	116	241	48.13%
Leg. Dist. 27	60	313	19.17%	142	318	44.65%	129	262	49.24%
Leg. Dist. 28	65	330	19.70%	93	264	35.23%	76	184	41.30%
Leg. Dist. 29	66	316	20.89%	115	310	37.10%	101	248	40.73%
CITY TOTAL:	856	2,885	29.67%	1,254	2,750	45.60%	1,151	2,299	50.07%
TOWNS									
Brighton	421	929	45.32%	595	987	60.28%	738	1,189	62.07%
Chili	335	859	39.00%	578	968	59.71%	450	740	60.81%
Clarkson	109	218	50.00%	121	191	63.35%	73	114	64.04%
East Rochester	74	180	41.11%	89	167	53.29%	113	178	63.48%
Gates	298	818	36.43%	353	730	48.36%	445	777	57.27%
Greece	1,019	2,750	37.05%	1,739	3,327	52.27%	1,696	2,857	59.36%
Hamlin	103	274	37.59%	158	301	52.49%	110	175	62.86%
Henrietta	385	968	39.77%	560	1,055	53.08%	597	994	60.06%
Irondequoit	694	1,488	46.64%	1,063	1,766	60.19%	1,107	1,719	64.40%
Mendon	200	348	57.47%	240	362	66.30%	170	262	64.89%
Ogden	285	669	42.60%	424	714	59.38%	302	491	61.51%
Parma	214	559	38.28%	329	587	56.05%	259	419	61.81%
Penfield	647	1,289	50.19%	913	1,465	62.32%	919	1,399	65.69%
Perinton	782	1,579	49.53%	1,135	1,716	66.14%	1,287	1,844	69.79%
Pittsford	506	1,040	48.65%	586	968	60.54%	770	1,156	66.61%
Riga	103	221	46.61%	124	218	56.88%	105	156	67.31%
Rush	63	124	50.81%	118	181	65.19%	104	147	70.75%
Sweden	129	281	45.91%	195	357	54.62%	154	248	62.10%
Webster	709	1,590	44.59%	954	1,692	56.38%	1,035	1,600	64.69%
Wheatland	71	149	47.65%	111	193	57.51%	52	109	47.71%
TOWNS TOTAL:	7,147	16,333	43.76%	10,385	17,945	57.87%	10,486	16,574	63.27%
GRAND TOTAL:	8,003	19,218	41.64%	11,639	20,695	56.24%	11,637	18,873	61.66%

BLANK TURNOUT - TOTAL AND GENDER 2014 GENERAL ELECTION

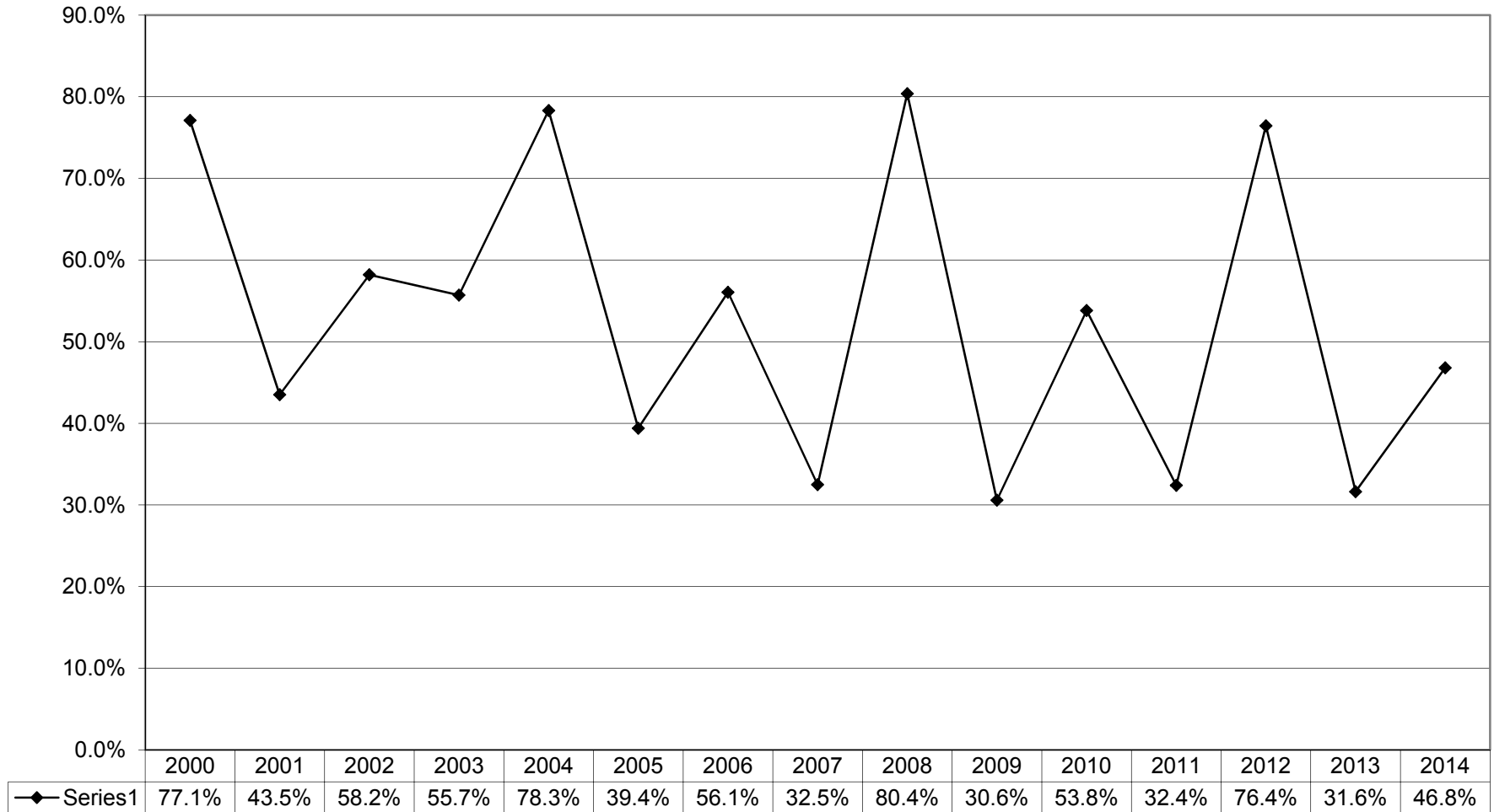


BLANKS TURNOUT BY AGE GROUP 2014 GENERAL ELECTION



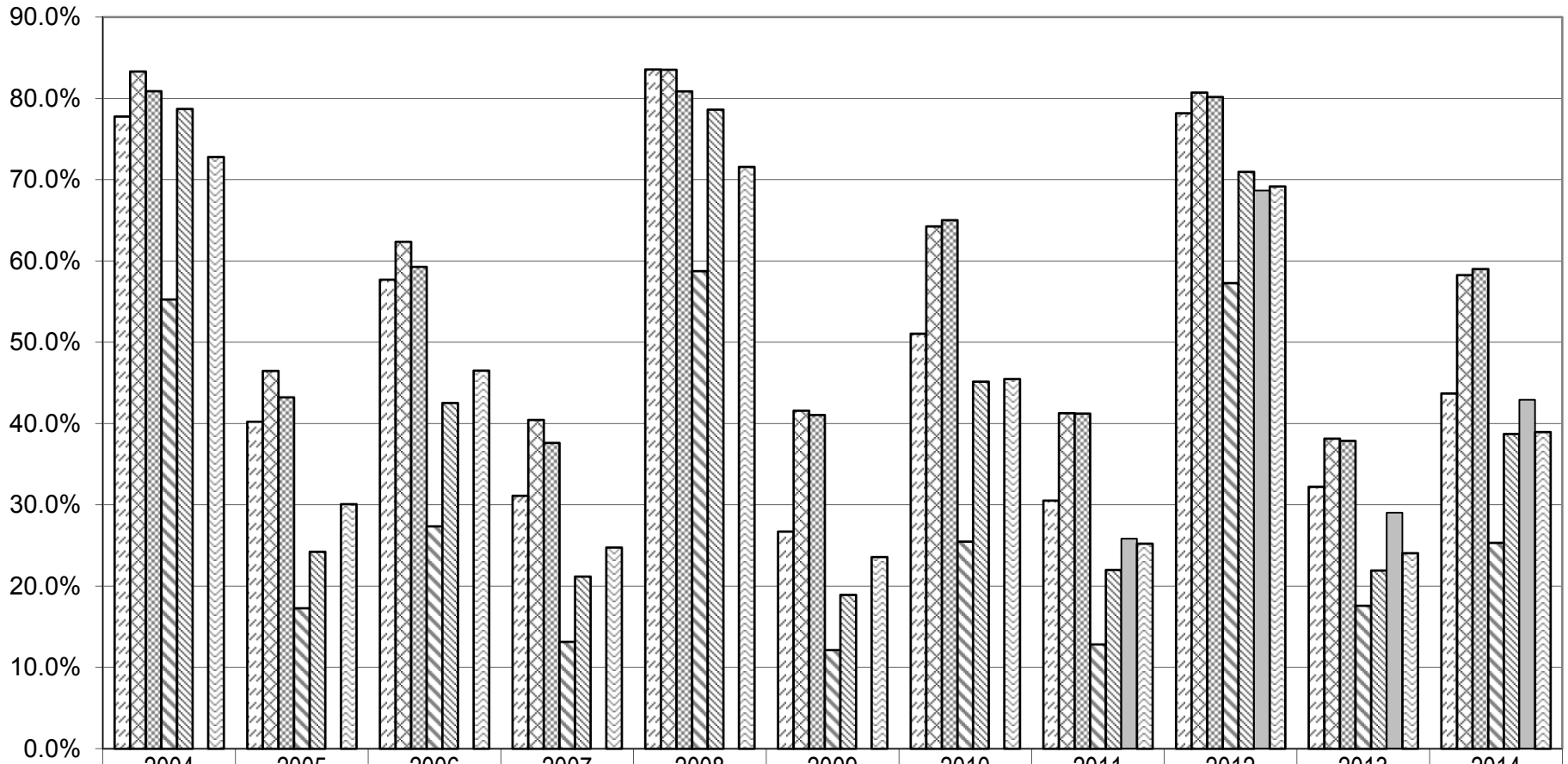
HISTORICAL DATA

VOTER TURNOUT FOR THE GENERAL ELECTION 2000 Through 2014



VOTER TURNOUT BY PARTY

2004 Through 2014 General Elections



	2004	2005	2006	2007	2008	2009	2010	2011	2012	2013	2014
Democrats	77.8%	40.2%	57.7%	31.1%	83.6%	26.7%	51.0%	30.5%	78.2%	32.2%	43.7%
Republicans	83.3%	46.5%	62.4%	40.4%	83.5%	41.6%	64.3%	41.3%	80.7%	38.2%	58.3%
Conservative	80.9%	43.2%	59.3%	37.6%	80.9%	41.1%	65.0%	41.2%	80.2%	37.9%	59.0%
Working Families	55.3%	17.3%	27.4%	13.2%	58.8%	12.1%	25.5%	12.8%	57.3%	17.6%	25.3%
Independence	78.7%	24.2%	42.5%	21.2%	78.6%	18.9%	45.2%	22.0%	71.0%	21.9%	38.7%
Green					Party Not	Constituted		25.8%	68.7%	29.0%	42.9%
Blanks	72.8%	30.1%	46.5%	24.7%	71.6%	23.6%	45.5%	25.2%	69.2%	24.1%	39.0%