



# **VOTER TURNOUT SUMMARY REPORT 2004 GENERAL ELECTION**

Monroe County Board of Elections  
39 West Main Street, Rochester, New York 14614

**January 21, 2005**

Peter M. Quinn  
Commissioner of Elections

Thomas F. Ferrarese  
Commissioner of Elections

# CONTENTS DESCRIPTION

General Summary.....	Page 1
Republican Summary .....	Page 12
Democratic Summary.....	Page 18
Independence Summary .....	Page 24
Conservative Summary .....	Page 30
Working Families Summary .....	Page 36
Blanks Summary .....	Page 42
Historical Data.....	Page 48

# **GENERAL SUMMARY**

2004 GENERAL ELECTION  
VOTER TURNOUT BY GENDER

LT/LD SUMMARY

LEGISLATIVE DISTRICT OR TOWN <b>CITY</b>	TOTAL VOTERS			MALES			FEMALES		
	VOTED	REGISTERED	TURNOUT	VOTED	REGISTERED	TURNOUT	VOTED	REGISTERED	TURNOUT
Leg. Dist. 06	2,422	3,185	76.04 %	1,060	1,408	75.28 %	1,362	1,777	76.65 %
Leg. Dist. 07	1,209	1,603	75.42 %	531	712	74.58 %	678	891	76.09 %
Leg. Dist. 21	9,330	13,086	71.30 %	3,951	5,643	70.02 %	5,379	7,443	72.27 %
Leg. Dist. 22	5,338	9,666	55.22 %	1,970	3,981	49.49 %	3,368	5,685	59.24 %
Leg. Dist. 23	10,682	13,210	80.86 %	5,064	6,337	79.91 %	5,618	6,873	81.74 %
Leg. Dist. 24	5,956	7,582	78.55 %	2,733	3,509	77.89 %	3,223	4,073	79.13 %
Leg. Dist. 25	6,797	10,365	65.58 %	2,896	4,675	61.95 %	3,901	5,690	68.56 %
Leg. Dist. 26	4,969	6,995	71.04 %	2,153	3,068	70.18 %	2,816	3,927	71.71 %
Leg. Dist. 27	9,286	13,291	69.87 %	3,638	5,554	65.50 %	5,648	7,737	73.00 %
Leg. Dist. 28	6,020	9,704	62.04 %	2,538	4,100	61.90 %	3,482	5,604	62.13 %
Leg. Dist. 29	7,204	11,232	64.14 %	2,900	4,669	62.11 %	4,304	6,563	65.58 %
<b>TOTAL:</b>	<b>69,213</b>	<b>99,919</b>	<b>69.27 %</b>	<b>29,434</b>	<b>43,656</b>	<b>67.42 %</b>	<b>39,779</b>	<b>56,263</b>	<b>70.70 %</b>
<b>TOWNS</b>									
Brighton	19,136	22,815	83.87 %	8,468	10,170	83.26 %	10,668	12,645	84.37 %
Chili	15,023	18,592	80.80 %	7,007	8,744	80.13 %	8,016	9,848	81.40 %
Clarkson	2,995	3,734	80.21 %	1,450	1,792	80.92 %	1,545	1,942	79.56 %
East Rochester	3,023	3,879	77.93 %	1,314	1,706	77.02 %	1,709	2,173	78.65 %
Gates	13,723	18,133	75.68 %	6,195	8,309	74.56 %	7,528	9,824	76.63 %
Greece	48,208	61,917	77.86 %	22,077	28,463	77.56 %	26,131	33,454	78.11 %
Hamlin	4,128	5,274	78.27 %	2,001	2,572	77.80 %	2,127	2,702	78.72 %
Henrietta	16,575	20,671	80.18 %	7,761	9,776	79.39 %	8,814	10,895	80.90 %
Irondequoit	28,413	35,352	80.37 %	12,651	15,770	80.22 %	15,762	19,582	80.49 %
Mendon	5,157	6,113	84.36 %	2,461	2,936	83.82 %	2,696	3,177	84.86 %
Ogden	9,881	12,231	80.79 %	4,673	5,829	80.17 %	5,208	6,402	81.35 %
Parma	7,700	9,780	78.73 %	3,676	4,711	78.03 %	4,024	5,069	79.38 %
Penfield	20,165	24,283	83.04 %	9,373	11,359	82.52 %	10,792	12,924	83.50 %
Perinton	27,714	32,813	84.46 %	12,834	15,332	83.71 %	14,880	17,481	85.12 %
Pittsford	16,177	19,126	84.58 %	7,544	8,961	84.19 %	8,633	10,165	84.93 %
Riga	3,009	3,707	81.17 %	1,415	1,761	80.35 %	1,594	1,946	81.91 %
Rush	2,132	2,531	84.24 %	1,025	1,236	82.93 %	1,107	1,295	85.48 %
Sweden	5,341	6,752	79.10 %	2,483	3,152	78.78 %	2,858	3,600	79.39 %
Webster	22,453	26,962	83.28 %	10,417	12,598	82.69 %	12,036	14,364	83.79 %
Wheatland	2,746	3,278	83.77 %	1,293	1,556	83.10 %	1,453	1,722	84.38 %
<b>TOTAL:</b>	<b>273,699</b>	<b>337,943</b>	<b>80.99 %</b>	<b>126,118</b>	<b>156,733</b>	<b>80.47 %</b>	<b>147,581</b>	<b>181,210</b>	<b>81.44 %</b>
<b>GRAND TOTAL:</b>	<b>342,912</b>	<b>437,862</b>	<b>78.32 %</b>	<b>155,552</b>	<b>200,389</b>	<b>77.63 %</b>	<b>187,360</b>	<b>237,473</b>	<b>78.90 %</b>

2004 GENERAL ELECTION  
VOTER TURNOUT BY PARTY

LT/LD SUMMARY  
Part 1 of 2

LEGISLATIVE DISTRICT OR TOWN	REPUBLICAN			DEMOCRAT			INDEPENDENCE		
	VOTED	REGISTERED	TURNOUT	VOTED	REGISTERED	TURNOUT	VOTED	REGISTERED	TURNOUT
<b>CITY</b>									
Leg. Dist. 06	797	1,002	79.54 %	870	1,127	77.20 %	84	112	75.00 %
Leg. Dist. 07	401	529	75.80 %	484	607	79.74 %	50	58	86.21 %
Leg. Dist. 21	1,696	2,246	75.51 %	5,284	7,264	72.74 %	316	421	75.06 %
Leg. Dist. 22	386	727	53.09 %	4,108	6,936	59.23 %	74	175	42.29 %
Leg. Dist. 23	2,287	2,814	81.27 %	5,098	6,139	83.04 %	434	551	78.77 %
Leg. Dist. 24	1,218	1,568	77.68 %	3,014	3,673	82.06 %	202	270	74.81 %
Leg. Dist. 25	666	1,026	64.91 %	4,748	7,064	67.21 %	160	261	61.30 %
Leg. Dist. 26	1,252	1,659	75.47 %	2,376	3,255	73.00 %	150	218	68.81 %
Leg. Dist. 27	1,012	1,398	72.39 %	6,710	9,275	72.35 %	174	284	61.27 %
Leg. Dist. 28	1,214	1,794	67.67 %	3,390	5,274	64.28 %	166	272	61.03 %
Leg. Dist. 29	1,218	1,787	68.16 %	4,559	6,805	66.99 %	164	260	63.08 %
<b>TOTAL:</b>	<b>12,147</b>	<b>16,550</b>	<b>73.40 %</b>	<b>40,641</b>	<b>57,419</b>	<b>70.78 %</b>	<b>1,974</b>	<b>2,882</b>	<b>68.49 %</b>
<b>TOWNS</b>									
Brighton	6,096	7,113	85.70 %	7,950	9,212	86.30 %	540	622	86.82 %
Chili	6,409	7,534	85.07 %	4,335	5,359	80.89 %	432	542	79.70 %
Clarkson	1,407	1,668	84.35 %	767	946	81.08 %	104	135	77.04 %
East Rochester	1,137	1,425	79.79 %	923	1,155	79.91 %	120	146	82.19 %
Gates	5,467	6,768	80.78 %	4,599	6,024	76.34 %	340	453	75.06 %
Greece	20,606	25,024	82.34 %	13,338	17,198	77.56 %	1,466	1,897	77.28 %
Hamlin	2,047	2,424	84.45 %	924	1,196	77.26 %	132	180	73.33 %
Henrietta	6,370	7,607	83.74 %	5,459	6,699	81.49 %	504	650	77.54 %
Irondequoit	10,415	12,569	82.86 %	9,814	12,047	81.46 %	860	1,057	81.36 %
Mendon	2,430	2,821	86.14 %	1,295	1,535	84.36 %	150	172	87.21 %
Ogden	4,528	5,367	84.37 %	2,382	2,913	81.77 %	270	329	82.07 %
Parma	3,488	4,191	83.23 %	1,763	2,231	79.02 %	224	293	76.45 %
Penfield	8,456	9,811	86.19 %	5,631	6,708	83.94 %	678	768	88.28 %
Perinton	12,131	13,860	87.53 %	7,580	8,938	84.81 %	896	1,036	86.49 %
Pittsford	7,356	8,443	87.13 %	4,483	5,201	86.19 %	438	473	92.60 %
Riga	1,499	1,757	85.32 %	650	812	80.05 %	112	124	90.32 %
Rush	938	1,080	86.85 %	554	650	85.23 %	58	62	93.55 %
Sweden	2,301	2,761	83.34 %	1,576	1,961	80.37 %	166	239	69.46 %
Webster	9,021	10,430	86.49 %	6,421	7,586	84.64 %	708	863	82.04 %
Wheatland	1,189	1,365	87.11 %	783	922	84.92 %	76	99	76.77 %
<b>TOTAL:</b>	<b>113,291</b>	<b>134,018</b>	<b>84.53 %</b>	<b>81,227</b>	<b>99,293</b>	<b>81.81 %</b>	<b>8,274</b>	<b>10,140</b>	<b>81.60 %</b>
<b>GRAND TOTAL:</b>	<b>125,438</b>	<b>150,568</b>	<b>83.31 %</b>	<b>121,868</b>	<b>156,712</b>	<b>77.77 %</b>	<b>10,248</b>	<b>13,022</b>	<b>78.70 %</b>

2004 GENERAL ELECTION  
VOTER TURNOUT BY PARTY

LT/LD SUMMARY  
Part 2 of 2

LEGISLATIVE DISTRICT OR TOWN	CONSERVATIVE			WORKING FAMILIES			BLANK		
	VOTED	REGISTERED	TURNOUT	VOTED	REGISTERED	TURNOUT	VOTED	REGISTERED	TURNOUT
<b>CITY</b>									
Leg. Dist. 06	82	106	77.36 %	5	7	71.43 %	586	831	70.52 %
Leg. Dist. 07	27	32	84.38 %	2	2	100.00 %	252	375	67.20 %
Leg. Dist. 21	90	121	74.38 %	21	46	45.65 %	1,950	2,988	65.26 %
Leg. Dist. 22	30	55	54.55 %	21	61	34.43 %	717	1,712	41.88 %
Leg. Dist. 23	89	106	83.96 %	20	34	58.82 %	2,768	3,566	77.62 %
Leg. Dist. 24	66	81	81.48 %	8	14	57.14 %	1,444	1,976	73.08 %
Leg. Dist. 25	41	56	73.21 %	18	34	52.94 %	1,159	1,924	60.24 %
Leg. Dist. 26	103	139	74.10 %	28	39	71.79 %	1,064	1,685	63.15 %
Leg. Dist. 27	65	89	73.03 %	25	61	40.98 %	1,297	2,184	59.39 %
Leg. Dist. 28	103	147	70.07 %	17	50	34.00 %	1,131	2,167	52.19 %
Leg. Dist. 29	84	120	70.00 %	12	47	25.53 %	1,178	2,213	53.23 %
<b>TOTAL:</b>	<b>780</b>	<b>1,052</b>	<b>74.14 %</b>	<b>177</b>	<b>395</b>	<b>44.81 %</b>	<b>13,546</b>	<b>21,621</b>	<b>62.65 %</b>
<b>TOWNS</b>									
Brighton	178	214	83.18 %	17	23	73.91 %	4,415	5,631	78.41 %
Chili	410	473	86.68 %	20	31	64.52 %	3,448	4,653	74.10 %
Clarkson	86	106	81.13 %	5	8	62.50 %	631	871	72.45 %
East Rochester	74	87	85.06 %	5	12	41.67 %	780	1,054	74.00 %
Gates	318	399	79.70 %	18	27	66.67 %	2,990	4,462	67.01 %
Greece	1,257	1,584	79.36 %	77	117	65.81 %	11,564	16,097	71.84 %
Hamlin	113	135	83.70 %	6	8	75.00 %	909	1,331	68.29 %
Henrietta	411	516	79.65 %	18	28	64.29 %	3,822	5,171	73.91 %
Irondequoit	584	733	79.67 %	31	44	70.45 %	6,756	8,902	75.89 %
Mendon	83	97	85.57 %	0	4	0.00 %	1,219	1,484	82.14 %
Ogden	295	360	81.94 %	14	21	66.67 %	2,409	3,241	74.33 %
Parma	207	260	79.62 %	14	20	70.00 %	2,014	2,785	72.32 %
Penfield	352	420	83.81 %	12	24	50.00 %	5,111	6,552	78.01 %
Perinton	403	487	82.75 %	13	21	61.90 %	6,788	8,471	80.13 %
Pittsford	175	199	87.94 %	11	13	84.62 %	3,785	4,797	78.90 %
Riga	69	83	83.13 %	4	8	50.00 %	696	923	75.41 %
Rush	48	55	87.27 %	4	5	80.00 %	540	679	79.53 %
Sweden	104	135	77.04 %	4	9	44.44 %	1,189	1,647	72.19 %
Webster	470	548	85.77 %	14	22	63.64 %	5,879	7,513	78.25 %
Wheatland	67	74	90.54 %	3	5	60.00 %	631	813	77.61 %
<b>TOTAL:</b>	<b>5,704</b>	<b>6,965</b>	<b>81.90 %</b>	<b>290</b>	<b>450</b>	<b>64.44 %</b>	<b>65,576</b>	<b>87,077</b>	<b>75.31 %</b>
<b>GRAND TOTAL:</b>	<b>6,484</b>	<b>8,017</b>	<b>80.88 %</b>	<b>467</b>	<b>845</b>	<b>55.27 %</b>	<b>79,122</b>	<b>108,698</b>	<b>72.79 %</b>

2004 GENERAL ELECTION  
VOTER TURNOUT BY AGE

LT/LD SUMMARY

Part 1 of 2

LEGISLATIVE DISTRICT OR TOWN	NDOB			18-24			25-34			35-44		
	VOTED	REGISTERED	TURNOUT	VOTED	REGISTERED	TURNOUT	VOTED	REGISTERED	TURNOUT	VOTED	REGISTERED	TURNOUT
Leg. Dist. 06	70	84	83.33 %	152	229	66.38 %	381	570	66.84 %	475	639	74.33 %
Leg. Dist. 07	35	46	76.09 %	66	118	55.93 %	125	204	61.27 %	157	231	67.97 %
Leg. Dist. 21	318	389	81.75 %	819	1,382	59.26 %	2,013	3,033	66.37 %	1,903	2,681	70.98 %
Leg. Dist. 22	69	106	65.09 %	609	1,349	45.14 %	959	1,979	48.46 %	1,051	2,028	51.82 %
Leg. Dist. 23	247	299	82.61 %	1,100	1,513	72.70 %	2,991	3,909	76.52 %	1,981	2,429	81.56 %
Leg. Dist. 24	136	165	82.42 %	462	649	71.19 %	1,325	1,769	74.90 %	1,066	1,363	78.21 %
Leg. Dist. 25	96	131	73.28 %	904	1,542	58.63 %	1,183	1,905	62.10 %	1,236	2,020	61.19 %
Leg. Dist. 26	127	155	81.94 %	455	768	59.24 %	915	1,477	61.95 %	1,084	1,547	70.07 %
Leg. Dist. 27	173	222	77.93 %	883	1,604	55.05 %	1,588	2,546	62.37 %	1,939	2,801	69.23 %
Leg. Dist. 28	138	202	68.32 %	604	1,196	50.50 %	1,031	1,939	53.17 %	1,213	2,012	60.29 %
Leg. Dist. 29	212	299	70.90 %	677	1,316	51.44 %	1,123	2,036	55.16 %	1,386	2,262	61.27 %
TOTAL:	1,621	2,098	77.26 %	6,731	11,666	57.70 %	13,634	21,367	63.81 %	13,491	20,013	67.41 %
Brighton	484	565	85.66 %	1,420	2,125	66.82 %	2,534	3,471	73.00 %	3,110	3,612	86.10 %
Chili	429	502	85.46 %	1,284	1,990	64.52 %	1,956	2,897	67.52 %	2,927	3,620	80.86 %
Clarkson	6	7	85.71 %	239	374	63.90 %	319	496	64.31 %	756	916	82.53 %
East Rochester	142	162	87.65 %	242	365	66.30 %	456	645	70.70 %	614	815	75.34 %
Gates	167	212	78.77 %	928	1,617	57.39 %	1,608	2,637	60.98 %	2,448	3,281	74.61 %
Greece	1,281	1,558	82.22 %	3,990	6,515	61.24 %	5,351	8,536	62.69 %	8,529	11,000	77.54 %
Hamlin	25	31	80.65 %	378	573	65.97 %	454	766	59.27 %	903	1,152	78.39 %
Henrietta	106	128	82.81 %	1,501	2,140	70.14 %	2,353	3,424	68.72 %	3,246	4,094	79.29 %
Irondequoit	927	1,166	79.50 %	1,810	2,799	64.67 %	3,261	4,679	69.69 %	4,948	6,143	80.55 %
Mendon	14	22	63.64 %	387	614	63.03 %	343	598	57.36 %	1,250	1,403	89.09 %
Ogden	146	168	86.90 %	865	1,283	67.42 %	1,140	1,791	63.65 %	2,165	2,595	83.43 %
Parma	42	50	84.00 %	640	1,065	60.09 %	827	1,292	64.01 %	1,619	2,018	80.23 %
Penfield	388	456	85.09 %	1,376	2,133	64.51 %	1,926	2,855	67.46 %	4,147	4,872	85.12 %
Perinton	97	120	80.83 %	1,916	2,913	65.77 %	2,799	4,163	67.24 %	5,649	6,565	86.05 %
Pittsford	195	219	89.04 %	1,080	1,718	62.86 %	1,112	1,856	59.91 %	3,077	3,549	86.70 %
Riga	23	30	76.67 %	248	391	63.43 %	277	435	63.68 %	655	805	81.37 %
Rush	50	57	87.72 %	119	199	59.80 %	175	257	68.09 %	446	518	86.10 %
Sweden	46	56	82.14 %	668	1,044	63.98 %	611	924	66.13 %	955	1,224	78.02 %
Webster	356	432	82.41 %	1,550	2,306	67.22 %	2,407	3,546	67.88 %	4,788	5,658	84.62 %
Wheatland	19	23	82.61 %	234	336	69.64 %	287	422	68.01 %	567	682	83.14 %
TOTAL:	4,943	5,964	82.88 %	20,875	32,500	64.23 %	30,196	45,690	66.09 %	52,799	64,522	81.83 %
GRAND TOTAL:	6,564	8,062	81.42 %	27,606	44,166	62.51 %	43,830	67,057	65.36 %	66,290	84,535	78.42 %

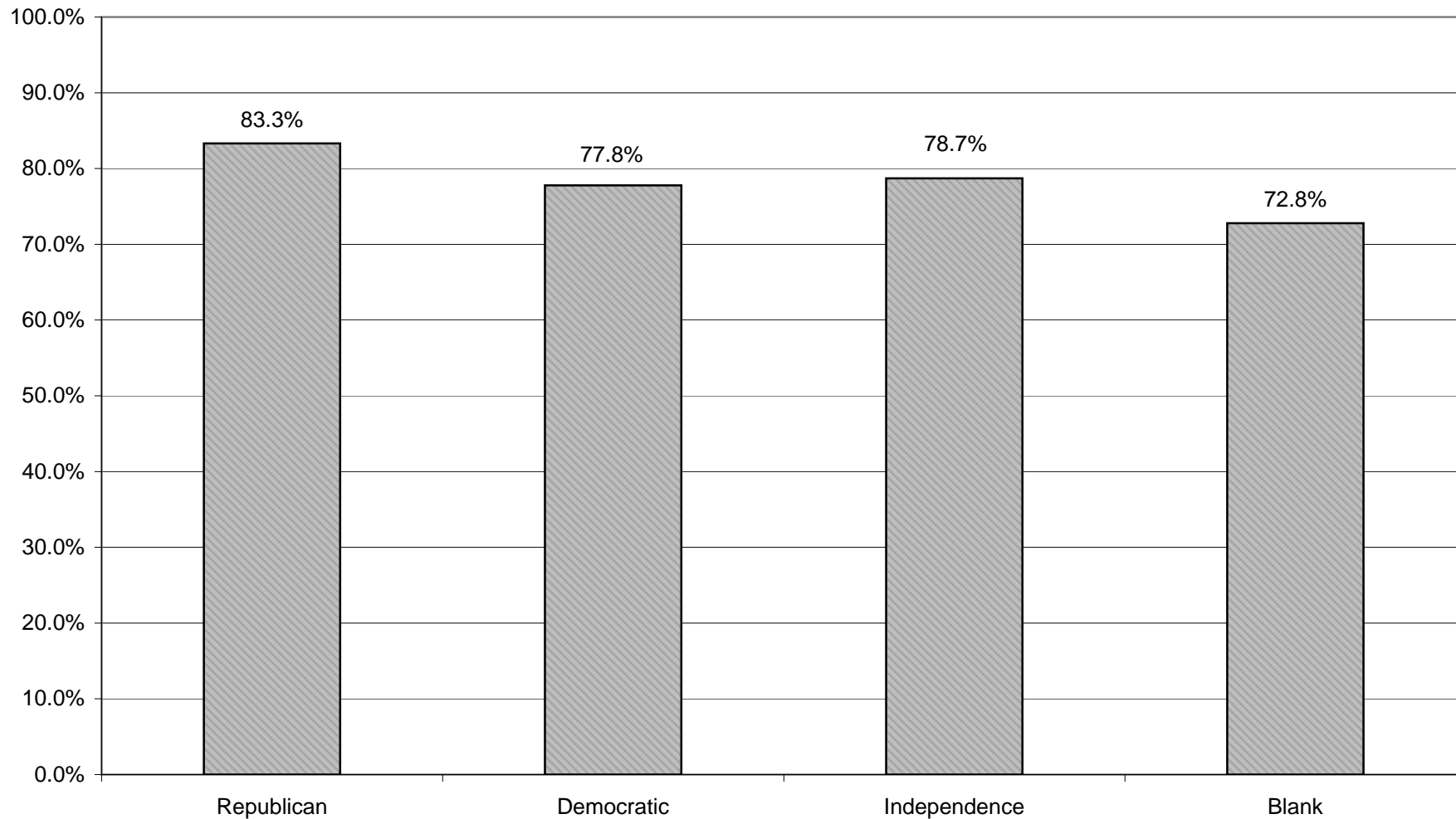
2004 GENERAL ELECTION  
VOTER TURNOUT BY AGE

LT/LD SUMMARY  
Part 2 of 2

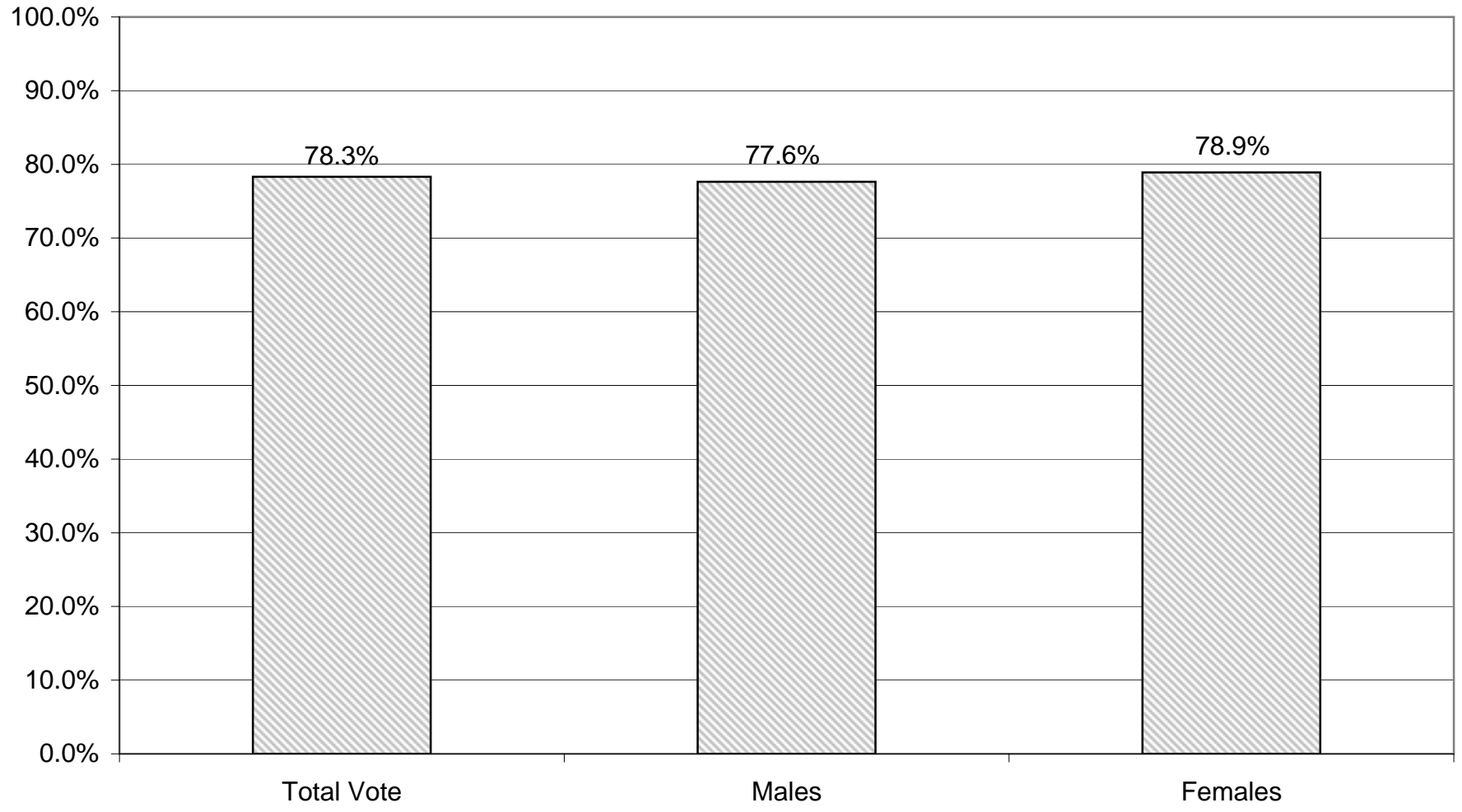
LEGISLATIVE DISTRICT OR TOWN	45-54			55-64			65+		
	VOTED	REGISTERED	TURNOUT	VOTED	REGISTERED	TURNOUT	VOTED	REGISTERED	TURNOUT
Leg. Dist. 06	538	655	82.14 %	363	424	85.61 %	443	584	75.86 %
Leg. Dist. 07	299	360	83.06 %	222	264	84.09 %	305	380	80.26 %
Leg. Dist. 21	1,868	2,448	76.31 %	1,233	1,563	78.89 %	1,176	1,590	73.96 %
Leg. Dist. 22	1,169	1,900	61.53 %	797	1,220	65.33 %	684	1,084	63.10 %
Leg. Dist. 23	1,803	2,106	85.61 %	1,543	1,697	90.93 %	1,017	1,257	80.91 %
Leg. Dist. 24	1,220	1,433	85.14 %	819	976	83.91 %	928	1,227	75.63 %
Leg. Dist. 25	1,220	1,814	67.25 %	1,033	1,344	76.86 %	1,125	1,609	69.92 %
Leg. Dist. 26	1,072	1,376	77.91 %	689	844	81.64 %	627	828	75.72 %
Leg. Dist. 27	2,034	2,686	75.73 %	1,533	1,907	80.39 %	1,136	1,525	74.49 %
Leg. Dist. 28	1,280	1,912	66.95 %	898	1,239	72.48 %	856	1,204	71.10 %
Leg. Dist. 29	1,367	2,045	66.85 %	1,211	1,567	77.28 %	1,228	1,707	71.94 %
TOTAL:	13,870	18,735	74.03 %	10,341	13,045	79.27 %	9,525	12,995	73.30 %
Brighton	4,017	4,405	91.19 %	3,158	3,431	92.04 %	4,413	5,206	84.77 %
Chili	3,402	3,857	88.20 %	2,502	2,806	89.17 %	2,523	2,920	86.40 %
Clarkson	748	852	87.79 %	448	501	89.42 %	479	588	81.46 %
East Rochester	630	762	82.68 %	424	495	85.66 %	515	635	81.10 %
Gates	2,655	3,237	82.02 %	2,419	2,820	85.78 %	3,498	4,329	80.80 %
Greece	11,194	13,094	85.49 %	8,059	9,191	87.68 %	9,804	12,023	81.54 %
Hamlin	1,126	1,298	86.75 %	733	835	87.78 %	509	619	82.23 %
Henrietta	3,553	4,148	85.66 %	2,758	3,119	88.43 %	3,058	3,618	84.52 %
Irondequoit	6,051	7,000	86.44 %	4,581	5,128	89.33 %	6,835	8,437	81.01 %
Mendon	1,443	1,554	92.86 %	975	1,041	93.66 %	745	881	84.56 %
Ogden	2,551	2,919	87.39 %	1,582	1,767	89.53 %	1,432	1,708	83.84 %
Parma	1,966	2,282	86.15 %	1,393	1,551	89.81 %	1,213	1,522	79.70 %
Penfield	4,902	5,457	89.83 %	3,543	3,916	90.47 %	3,883	4,594	84.52 %
Perinton	6,686	7,308	91.49 %	5,412	5,856	92.42 %	5,155	5,888	87.55 %
Pittsford	3,911	4,278	91.42 %	3,111	3,375	92.18 %	3,691	4,131	89.35 %
Riga	795	904	87.94 %	558	618	90.29 %	453	524	86.45 %
Rush	559	626	89.30 %	420	456	92.11 %	363	418	86.84 %
Sweden	1,275	1,468	86.85 %	959	1,054	90.99 %	827	982	84.22 %
Webster	5,193	5,771	89.98 %	3,924	4,335	90.52 %	4,235	4,914	86.18 %
Wheatland	633	701	90.30 %	478	527	90.70 %	528	587	89.95 %
TOTAL:	63,290	71,921	88.00 %	47,437	52,822	89.81 %	54,159	64,524	83.94 %
GRAND TOTAL:	77,160	90,656	85.11 %	57,778	65,867	87.72 %	63,684	77,519	82.15 %



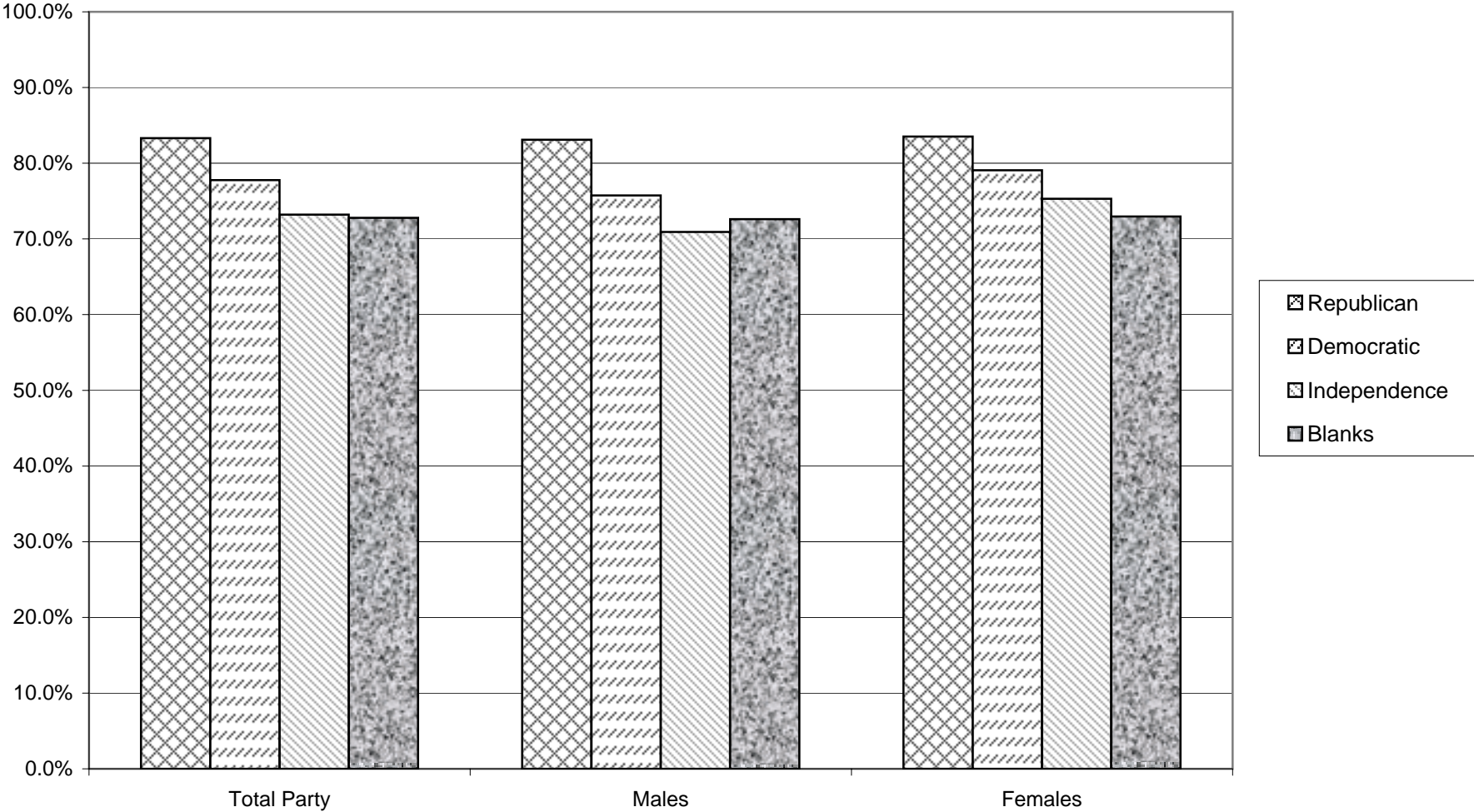
## VOTER TURNOUT BY PARTY 2004 GENERAL ELECTION



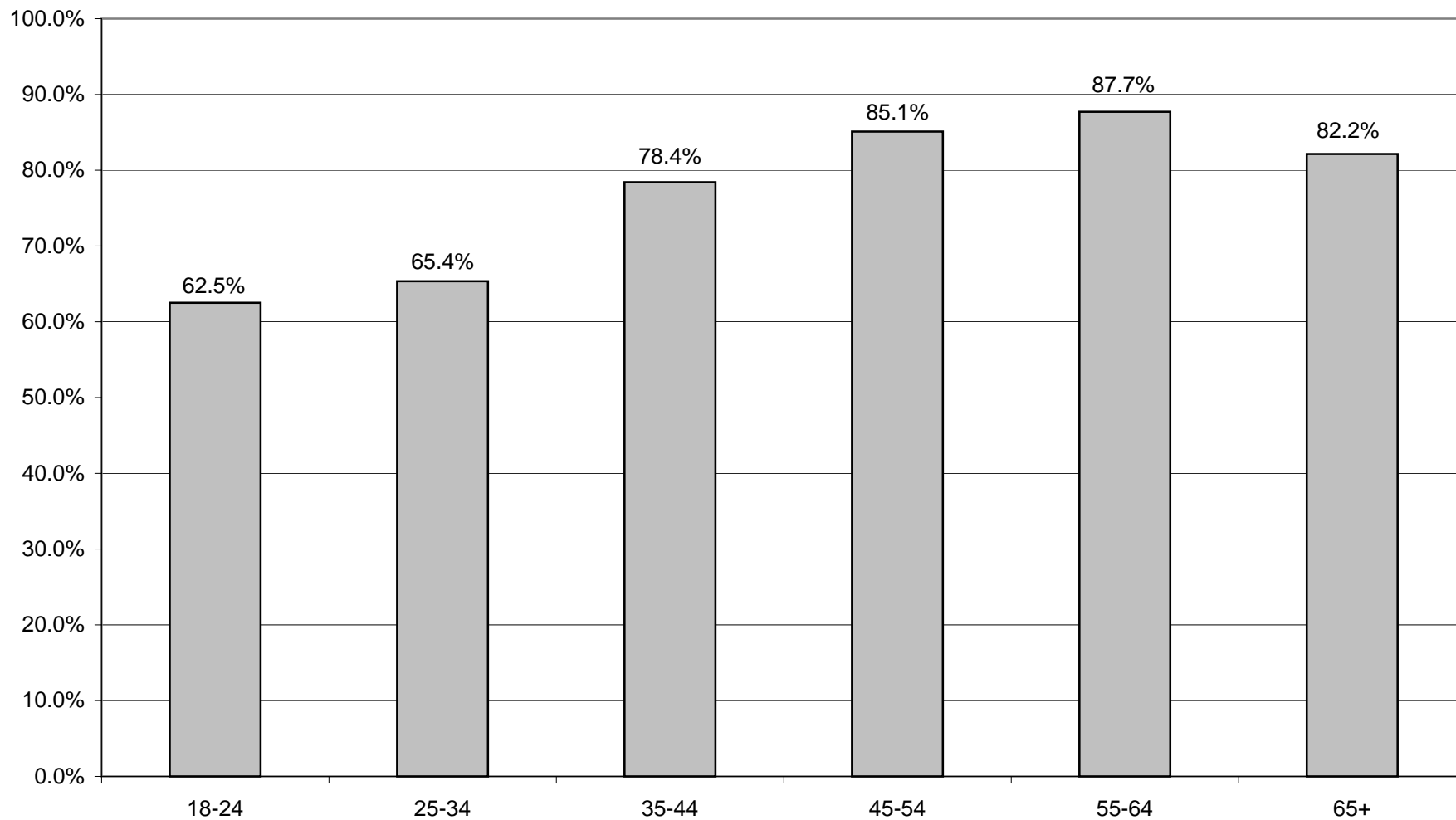
# VOTER TURNOUT - TOTAL AND BY GENDER 2004 GENERAL ELECTION



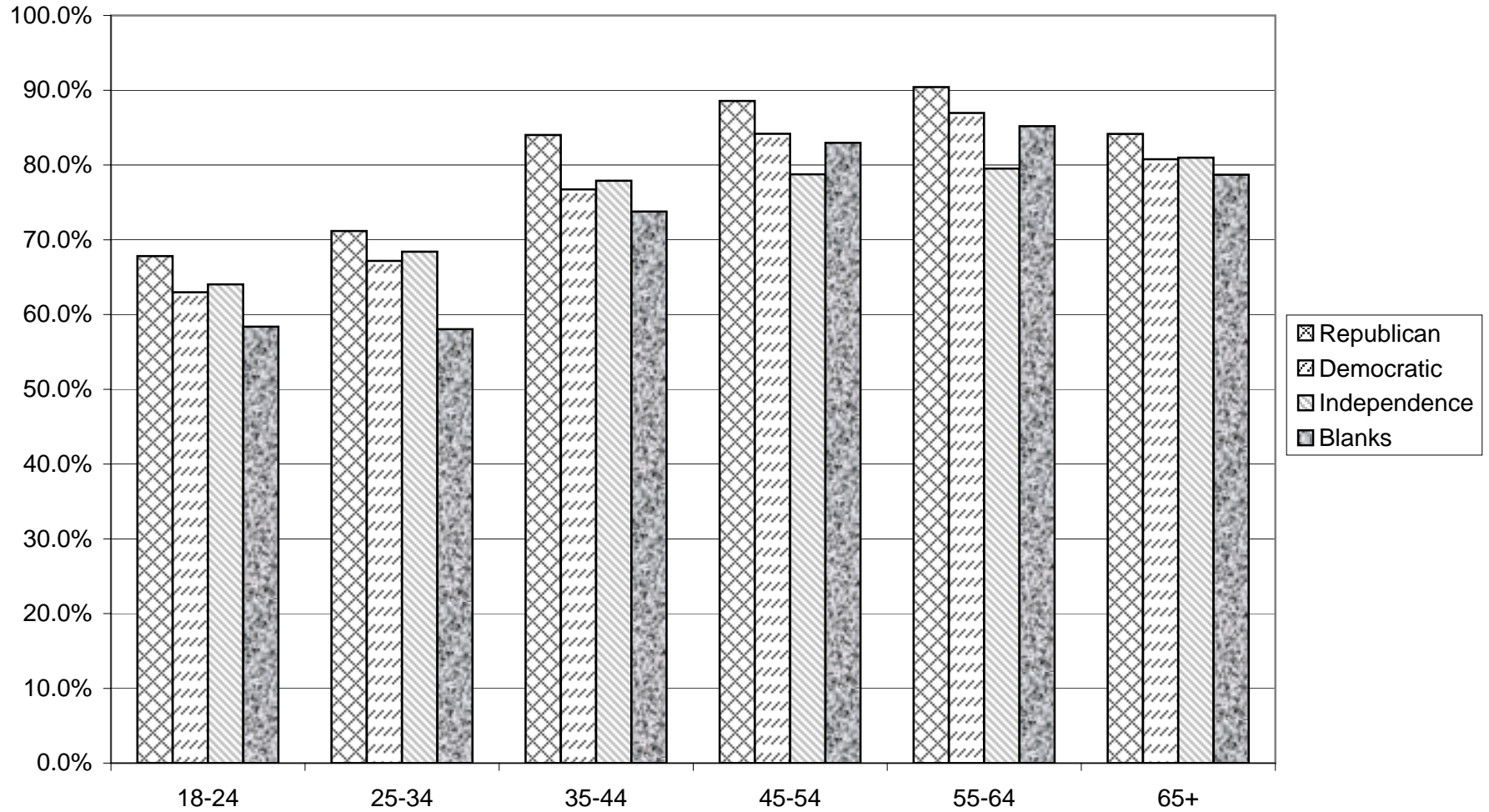
# COMPARISON OF TOTAL AND GENDER TURNOUT 2004 GENERAL ELECTION



## VOTER TURNOUT BY AGE GROUP 2004 GENERAL ELECTION



# COMPARISON OF TURNOUT BY AGE GROUP 2004 GENERAL ELECTION



# **REPUBLICAN SUMMARY**

2004 GENERAL ELECTION  
REPUBLICAN TURNOUT BY GENDER

LT/LD SUMMARY

LEGISLATIVE DISTRICT OR TOWN <b>CITY</b>	TOTAL VOTERS			MALES			FEMALES		
	VOTED	REGISTERED	TURNOUT	VOTED	REGISTERED	TURNOUT	VOTED	REGISTERED	TURNOUT
Leg. Dist. 06	797	1,002	79.54 %	386	496	77.82 %	411	506	81.23 %
Leg. Dist. 07	401	529	75.80 %	196	255	76.86 %	205	274	74.82 %
Leg. Dist. 21	1,696	2,246	75.51 %	825	1,099	75.07 %	871	1,147	75.94 %
Leg. Dist. 22	386	727	53.09 %	175	353	49.58 %	211	374	56.42 %
Leg. Dist. 23	2,287	2,814	81.27 %	1,245	1,509	82.50 %	1,042	1,305	79.85 %
Leg. Dist. 24	1,218	1,568	77.68 %	607	770	78.83 %	611	798	76.57 %
Leg. Dist. 25	666	1,026	64.91 %	353	551	64.07 %	313	475	65.89 %
Leg. Dist. 26	1,252	1,659	75.47 %	616	818	75.31 %	636	841	75.62 %
Leg. Dist. 27	1,012	1,398	72.39 %	488	673	72.51 %	524	725	72.28 %
Leg. Dist. 28	1,214	1,794	67.67 %	612	885	69.15 %	602	909	66.23 %
Leg. Dist. 29	1,218	1,787	68.16 %	588	863	68.13 %	630	924	68.18 %
<b>TOTAL:</b>	<b>12,147</b>	<b>16,550</b>	<b>73.40 %</b>	<b>6,091</b>	<b>8,272</b>	<b>73.63 %</b>	<b>6,056</b>	<b>8,278</b>	<b>73.16 %</b>
<b>TOWNS</b>									
Brighton	6,096	7,113	85.70 %	2,951	3,438	85.83 %	3,145	3,675	85.58 %
Chili	6,409	7,534	85.07 %	3,192	3,789	84.24 %	3,217	3,745	85.90 %
Clarkson	1,407	1,668	84.35 %	728	852	85.45 %	679	816	83.21 %
East Rochester	1,137	1,425	79.79 %	543	687	79.04 %	594	738	80.49 %
Gates	5,467	6,768	80.78 %	2,665	3,336	79.89 %	2,802	3,432	81.64 %
Greece	20,606	25,024	82.34 %	10,212	12,404	82.33 %	10,394	12,620	82.36 %
Hamlin	2,047	2,424	84.45 %	1,046	1,254	83.41 %	1,001	1,170	85.56 %
Henrietta	6,370	7,607	83.74 %	3,229	3,876	83.31 %	3,141	3,731	84.19 %
Irondequoit	10,415	12,569	82.86 %	5,085	6,100	83.36 %	5,330	6,469	82.39 %
Mendon	2,430	2,821	86.14 %	1,257	1,473	85.34 %	1,173	1,348	87.02 %
Ogden	4,528	5,367	84.37 %	2,303	2,730	84.36 %	2,225	2,637	84.38 %
Parma	3,488	4,191	83.23 %	1,790	2,188	81.81 %	1,698	2,003	84.77 %
Penfield	8,456	9,811	86.19 %	4,291	4,998	85.85 %	4,165	4,813	86.54 %
Perinton	12,131	13,860	87.53 %	6,094	7,006	86.98 %	6,037	6,854	88.08 %
Pittsford	7,356	8,443	87.13 %	3,740	4,325	86.47 %	3,616	4,118	87.81 %
Riga	1,499	1,757	85.32 %	735	870	84.48 %	764	887	86.13 %
Rush	938	1,080	86.85 %	493	569	86.64 %	445	511	87.08 %
Sweden	2,301	2,761	83.34 %	1,137	1,377	82.57 %	1,164	1,384	84.10 %
Webster	9,021	10,430	86.49 %	4,603	5,321	86.51 %	4,418	5,109	86.47 %
Wheatland	1,189	1,365	87.11 %	581	667	87.11 %	608	698	87.11 %
<b>TOTAL:</b>	<b>113,291</b>	<b>134,018</b>	<b>84.53 %</b>	<b>56,675</b>	<b>67,260</b>	<b>84.26 %</b>	<b>56,616</b>	<b>66,758</b>	<b>84.81 %</b>
<b>GRAND TOTAL:</b>	<b>125,438</b>	<b>150,568</b>	<b>83.31 %</b>	<b>62,766</b>	<b>75,532</b>	<b>83.10 %</b>	<b>62,672</b>	<b>75,036</b>	<b>83.52 %</b>

2004 GENERAL ELECTION  
REPUBLICAN TURNOUT BY AGE

LT/LD SUMMARY  
Part 1 of 2

LEGISLATIVE DISTRICT OR TOWN CITY	NDOB			18-24			25-34			35-44		
	VOTED	REGISTERED	TURNOUT	VOTED	REGISTERED	TURNOUT	VOTED	REGISTERED	TURNOUT	VOTED	REGISTERED	TURNOUT
Leg. Dist. 06	44	53	83.02 %	31	42	73.81 %	109	152	71.71 %	137	178	76.97 %
Leg. Dist. 07	25	32	78.13 %	12	24	50.00 %	34	53	64.15 %	43	62	69.35 %
Leg. Dist. 21	176	227	77.53 %	83	127	65.35 %	309	427	72.37 %	303	406	74.63 %
Leg. Dist. 22	21	31	67.74 %	28	72	38.89 %	48	117	41.03 %	70	153	45.75 %
Leg. Dist. 23	134	172	77.91 %	163	215	75.81 %	600	765	78.43 %	417	507	82.25 %
Leg. Dist. 24	72	85	84.71 %	60	79	75.95 %	219	288	76.04 %	181	238	76.05 %
Leg. Dist. 25	26	38	68.42 %	53	100	53.00 %	104	170	61.18 %	115	188	61.17 %
Leg. Dist. 26	79	101	78.22 %	78	106	73.58 %	162	245	66.12 %	254	347	73.20 %
Leg. Dist. 27	73	100	73.00 %	73	124	58.87 %	145	215	67.44 %	167	240	69.58 %
Leg. Dist. 28	73	104	70.19 %	67	121	55.37 %	160	281	56.94 %	208	328	63.41 %
Leg. Dist. 29	90	136	66.18 %	48	92	52.17 %	144	246	58.54 %	196	316	62.03 %
<b>TOTAL:</b>	<b>813</b>	<b>1,079</b>	<b>75.35 %</b>	<b>696</b>	<b>1,102</b>	<b>63.16 %</b>	<b>2,034</b>	<b>2,959</b>	<b>68.74 %</b>	<b>2,091</b>	<b>2,963</b>	<b>70.57 %</b>
<b>TOWNS</b>												
Brighton	335	398	84.17 %	280	387	72.35 %	692	881	78.55 %	915	1,047	87.39 %
Chili	288	342	84.21 %	401	554	72.38 %	729	977	74.62 %	1,255	1,477	84.97 %
Clarkson	2	2	100.00 %	93	129	72.09 %	119	162	73.46 %	352	415	84.82 %
East Rochester	92	101	91.09 %	54	85	63.53 %	118	178	66.29 %	237	300	79.00 %
Gates	106	135	78.52 %	234	371	63.07 %	494	753	65.60 %	902	1,128	79.96 %
Greece	875	1,076	81.32 %	1,132	1,714	66.04 %	1,840	2,623	70.15 %	3,567	4,293	83.09 %
Hamlin	20	23	86.96 %	139	197	70.56 %	191	274	69.71 %	418	493	84.79 %
Henrietta	68	81	83.95 %	371	514	72.18 %	784	1,051	74.60 %	1,235	1,490	82.89 %
Irondequoit	576	740	77.84 %	465	660	70.45 %	908	1,237	73.40 %	1,716	2,048	83.79 %
Mendon	8	16	50.00 %	147	225	65.33 %	133	222	59.91 %	585	645	90.70 %
Ogden	101	113	89.38 %	310	439	70.62 %	463	661	70.05 %	993	1,142	86.95 %
Parma	30	37	81.08 %	211	317	66.56 %	300	407	73.71 %	699	829	84.32 %
Penfield	268	312	85.90 %	388	562	69.04 %	685	948	72.26 %	1,833	2,077	88.25 %
Perinton	63	80	78.75 %	512	753	67.99 %	981	1,371	71.55 %	2,580	2,939	87.78 %
Pittsford	147	167	88.02 %	335	491	68.23 %	426	654	65.14 %	1,389	1,568	88.58 %
Riga	16	23	69.57 %	95	141	67.38 %	111	164	67.68 %	326	379	86.02 %
Rush	38	45	84.44 %	37	56	66.07 %	66	87	75.86 %	172	198	86.87 %
Sweden	34	40	85.00 %	187	300	62.33 %	211	291	72.51 %	439	527	83.30 %
Webster	203	248	81.85 %	412	603	68.33 %	861	1,171	73.53 %	1,960	2,214	88.53 %
Wheatland	13	14	92.86 %	87	111	78.38 %	104	142	73.24 %	230	269	85.50 %
<b>TOTAL:</b>	<b>3,283</b>	<b>3,993</b>	<b>82.22 %</b>	<b>5,890</b>	<b>8,609</b>	<b>68.42 %</b>	<b>10,216</b>	<b>14,254</b>	<b>71.67 %</b>	<b>21,803</b>	<b>25,478</b>	<b>85.58 %</b>
<b>GRAND TOTAL:</b>	<b>4,096</b>	<b>5,072</b>	<b>80.76 %</b>	<b>6,586</b>	<b>9,711</b>	<b>67.82 %</b>	<b>12,250</b>	<b>17,213</b>	<b>71.17 %</b>	<b>23,894</b>	<b>28,441</b>	<b>84.01 %</b>

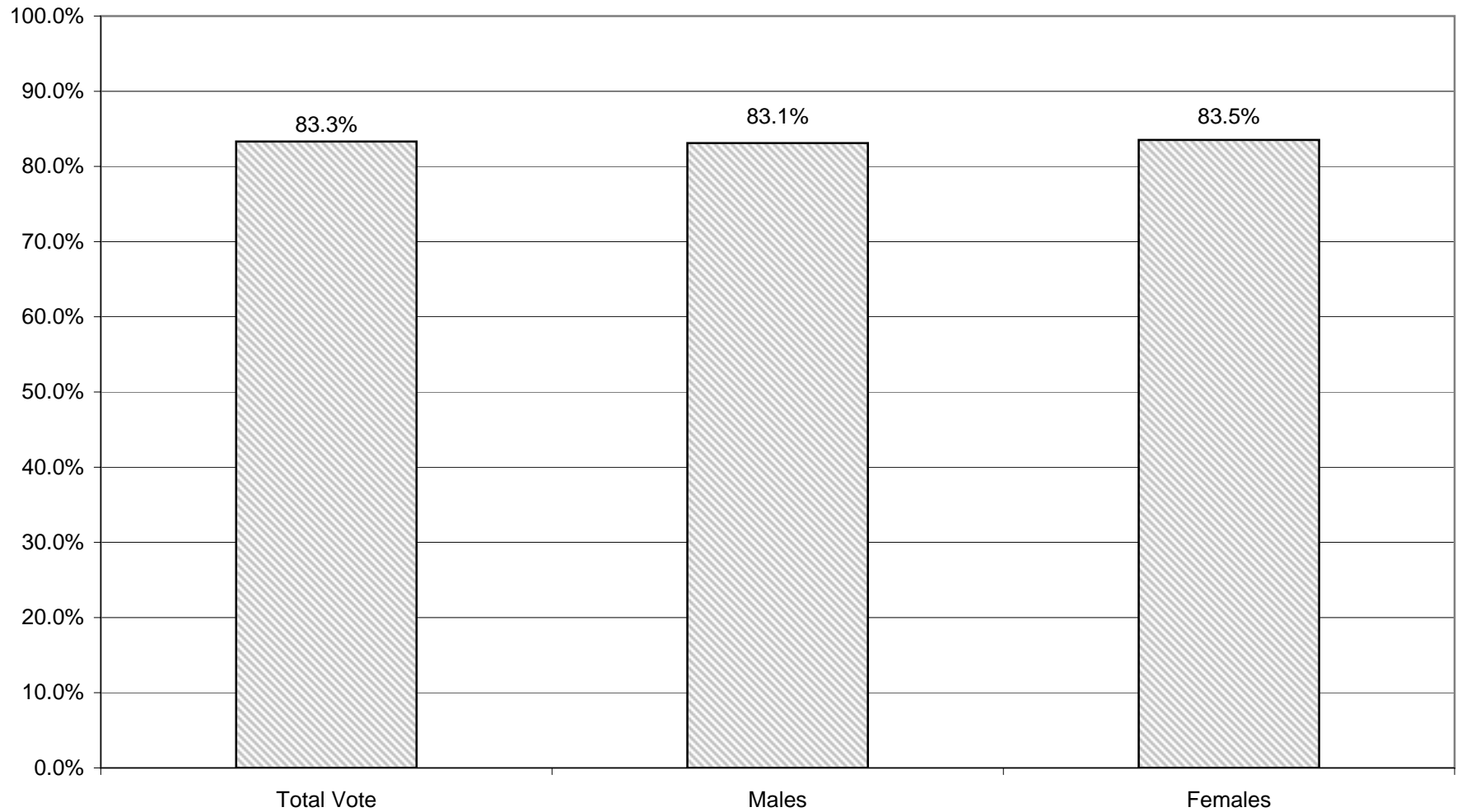


2004 GENERAL ELECTION  
REPUBLICAN TURNOUT BY AGE

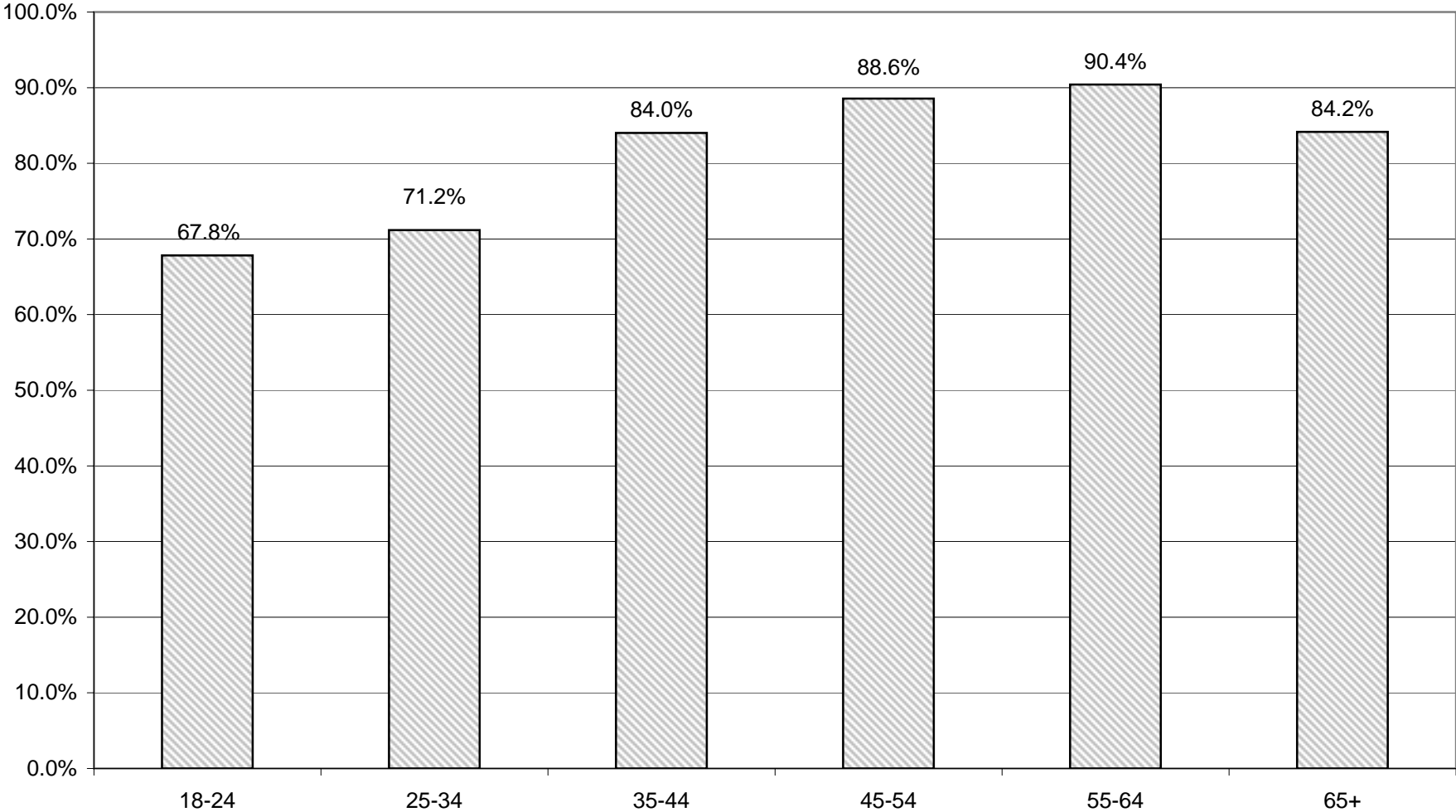
LT/LD SUMMARY  
Part 2 of 2

LEGISLATIVE DISTRICT OR TOWN CITY	45-54			55-64			65+		
	VOTED	REGISTERED	TURNOUT	VOTED	REGISTERED	TURNOUT	VOTED	REGISTERED	TURNOUT
Leg. Dist. 06	152	180	84.44 %	122	136	89.71 %	202	261	77.39 %
Leg. Dist. 07	79	100	79.00 %	69	83	83.13 %	139	175	79.43 %
Leg. Dist. 21	251	328	76.52 %	221	263	84.03 %	353	468	75.43 %
Leg. Dist. 22	73	133	54.89 %	68	100	68.00 %	78	121	64.46 %
Leg. Dist. 23	368	424	86.79 %	307	341	90.03 %	298	390	76.41 %
Leg. Dist. 24	203	250	81.20 %	163	200	81.50 %	320	428	74.77 %
Leg. Dist. 25	118	164	71.95 %	97	119	81.51 %	153	247	61.94 %
Leg. Dist. 26	249	320	77.81 %	192	225	85.33 %	238	315	75.56 %
Leg. Dist. 27	206	269	76.58 %	145	182	79.67 %	203	268	75.75 %
Leg. Dist. 28	256	354	72.32 %	195	248	78.63 %	255	358	71.23 %
Leg. Dist. 29	211	298	70.81 %	213	271	78.60 %	316	428	73.83 %
<b>TOTAL:</b>	<b>2,166</b>	<b>2,820</b>	<b>76.81 %</b>	<b>1,792</b>	<b>2,168</b>	<b>82.66 %</b>	<b>2,555</b>	<b>3,459</b>	<b>73.87 %</b>
<b>TOWNS</b>									
Brighton	1,004	1,117	89.88 %	952	1,036	91.89 %	1,918	2,247	85.36 %
Chili	1,301	1,424	91.36 %	1,055	1,165	90.56 %	1,380	1,595	86.52 %
Clarkson	331	364	90.93 %	215	240	89.58 %	295	356	82.87 %
East Rochester	223	267	83.52 %	155	186	83.33 %	258	308	83.77 %
Gates	971	1,142	85.03 %	996	1,127	88.38 %	1,764	2,112	83.52 %
Greece	4,169	4,729	88.16 %	3,419	3,804	89.88 %	5,604	6,785	82.59 %
Hamlin	557	618	90.13 %	387	432	89.58 %	335	387	86.56 %
Henrietta	1,317	1,501	87.74 %	1,056	1,186	89.04 %	1,539	1,784	86.27 %
Irondequoit	1,864	2,095	88.97 %	1,638	1,799	91.05 %	3,248	3,990	81.40 %
Mendon	617	657	93.91 %	462	492	93.90 %	478	564	84.75 %
Ogden	1,084	1,216	89.14 %	734	803	91.41 %	843	993	84.89 %
Parma	818	927	88.24 %	676	745	90.74 %	754	929	81.16 %
Penfield	1,834	2,013	91.11 %	1,415	1,538	92.00 %	2,033	2,361	86.11 %
Perinton	2,715	2,930	92.66 %	2,351	2,507	93.78 %	2,929	3,280	89.30 %
Pittsford	1,583	1,737	91.13 %	1,348	1,458	92.46 %	2,128	2,368	89.86 %
Riga	367	407	90.17 %	306	324	94.44 %	278	319	87.15 %
Rush	211	233	90.56 %	186	198	93.94 %	228	263	86.69 %
Sweden	513	579	88.60 %	436	474	91.98 %	481	550	87.45 %
Webster	1,899	2,077	91.43 %	1,566	1,705	91.85 %	2,120	2,412	87.89 %
Wheatland	247	268	92.16 %	210	230	91.30 %	298	331	90.03 %
<b>TOTAL:</b>	<b>23,625</b>	<b>26,301</b>	<b>89.83 %</b>	<b>19,563</b>	<b>21,449</b>	<b>91.21 %</b>	<b>28,911</b>	<b>33,934</b>	<b>85.20 %</b>
<b>GRAND TOTAL:</b>	<b>25,791</b>	<b>29,121</b>	<b>88.56 %</b>	<b>21,355</b>	<b>23,617</b>	<b>90.42 %</b>	<b>31,466</b>	<b>37,393</b>	<b>84.15 %</b>

# REPUBLICAN TURNOUT - TOTAL AND GENDER 2004 GENERAL ELECTION



# REPUBLICAN TURNOUT BY AGE GROUP 2004 GENERAL ELECTION



# **DEMOCRATIC SUMMARY**

2004 GENERAL ELECTION  
DEMOCRATIC TURNOUT BY GENDER

LT/LD SUMMARY

LEGISLATIVE DISTRICT OR TOWN	TOTAL VOTERS			MALES			FEMALES		
	VOTED	REGISTERED	TURNOUT	VOTED	REGISTERED	TURNOUT	VOTED	REGISTERED	TURNOUT
<b>CITY</b>									
Leg. Dist. 06	870	1,127	77.20 %	325	418	77.75 %	545	709	76.87 %
Leg. Dist. 07	484	607	79.74 %	175	224	78.13 %	309	383	80.68 %
Leg. Dist. 21	5,284	7,264	72.74 %	1,980	2,806	70.56 %	3,304	4,458	74.11 %
Leg. Dist. 22	4,108	6,936	59.23 %	1,457	2,737	53.23 %	2,651	4,199	63.13 %
Leg. Dist. 23	5,098	6,139	83.04 %	2,141	2,626	81.53 %	2,957	3,513	84.17 %
Leg. Dist. 24	3,014	3,673	82.06 %	1,231	1,514	81.31 %	1,783	2,159	82.58 %
Leg. Dist. 25	4,748	7,064	67.21 %	1,821	2,933	62.09 %	2,927	4,131	70.85 %
Leg. Dist. 26	2,376	3,255	73.00 %	888	1,255	70.76 %	1,488	2,000	74.40 %
Leg. Dist. 27	6,710	9,275	72.35 %	2,402	3,588	66.95 %	4,308	5,687	75.75 %
Leg. Dist. 28	3,390	5,274	64.28 %	1,271	2,038	62.37 %	2,119	3,236	65.48 %
Leg. Dist. 29	4,559	6,805	66.99 %	1,654	2,627	62.96 %	2,905	4,178	69.53 %
<b>TOTAL:</b>	<b>40,641</b>	<b>57,419</b>	<b>70.78 %</b>	<b>15,345</b>	<b>22,766</b>	<b>67.40 %</b>	<b>25,296</b>	<b>34,653</b>	<b>73.00 %</b>
<b>TOWNS</b>									
Brighton	7,950	9,212	86.30 %	3,049	3,564	85.55 %	4,901	5,648	86.77 %
Chili	4,335	5,359	80.89 %	1,711	2,128	80.40 %	2,624	3,231	81.21 %
Clarkson	767	946	81.08 %	298	361	82.55 %	469	585	80.17 %
East Rochester	923	1,155	79.91 %	337	422	79.86 %	586	733	79.95 %
Gates	4,599	6,024	76.34 %	1,770	2,365	74.84 %	2,829	3,659	77.32 %
Greece	13,338	17,198	77.56 %	5,079	6,642	76.47 %	8,259	10,556	78.24 %
Hamlin	924	1,196	77.26 %	369	487	75.77 %	555	709	78.28 %
Henrietta	5,459	6,699	81.49 %	2,139	2,683	79.72 %	3,320	4,016	82.67 %
Irondequoit	9,814	12,047	81.46 %	3,642	4,490	81.11 %	6,172	7,557	81.67 %
Mendon	1,295	1,535	84.36 %	499	596	83.72 %	796	939	84.77 %
Ogden	2,382	2,913	81.77 %	906	1,148	78.92 %	1,476	1,765	83.63 %
Parma	1,763	2,231	79.02 %	686	886	77.43 %	1,077	1,345	80.07 %
Penfield	5,631	6,708	83.94 %	2,138	2,595	82.39 %	3,493	4,113	84.93 %
Perinton	7,580	8,938	84.81 %	2,835	3,403	83.31 %	4,745	5,535	85.73 %
Pittsford	4,483	5,201	86.19 %	1,700	1,992	85.34 %	2,783	3,209	86.72 %
Riga	650	812	80.05 %	246	315	78.10 %	404	497	81.29 %
Rush	554	650	85.23 %	216	260	83.08 %	338	390	86.67 %
Sweden	1,576	1,961	80.37 %	622	777	80.05 %	954	1,184	80.57 %
Webster	6,421	7,586	84.64 %	2,449	2,944	83.19 %	3,972	4,642	85.57 %
Wheatland	783	922	84.92 %	330	396	83.33 %	453	526	86.12 %
<b>TOTAL:</b>	<b>81,227</b>	<b>99,293</b>	<b>81.81 %</b>	<b>31,021</b>	<b>38,454</b>	<b>80.67 %</b>	<b>50,206</b>	<b>60,839</b>	<b>82.52 %</b>
<b>GRAND TOTAL:</b>	<b>121,868</b>	<b>156,712</b>	<b>77.77 %</b>	<b>46,366</b>	<b>61,220</b>	<b>75.74 %</b>	<b>75,502</b>	<b>95,492</b>	<b>79.07 %</b>

2004 GENERAL ELECTION  
DEMOCRATIC TURNOUT BY AGE

LT/LD SUMMARY  
Part 2 of 2

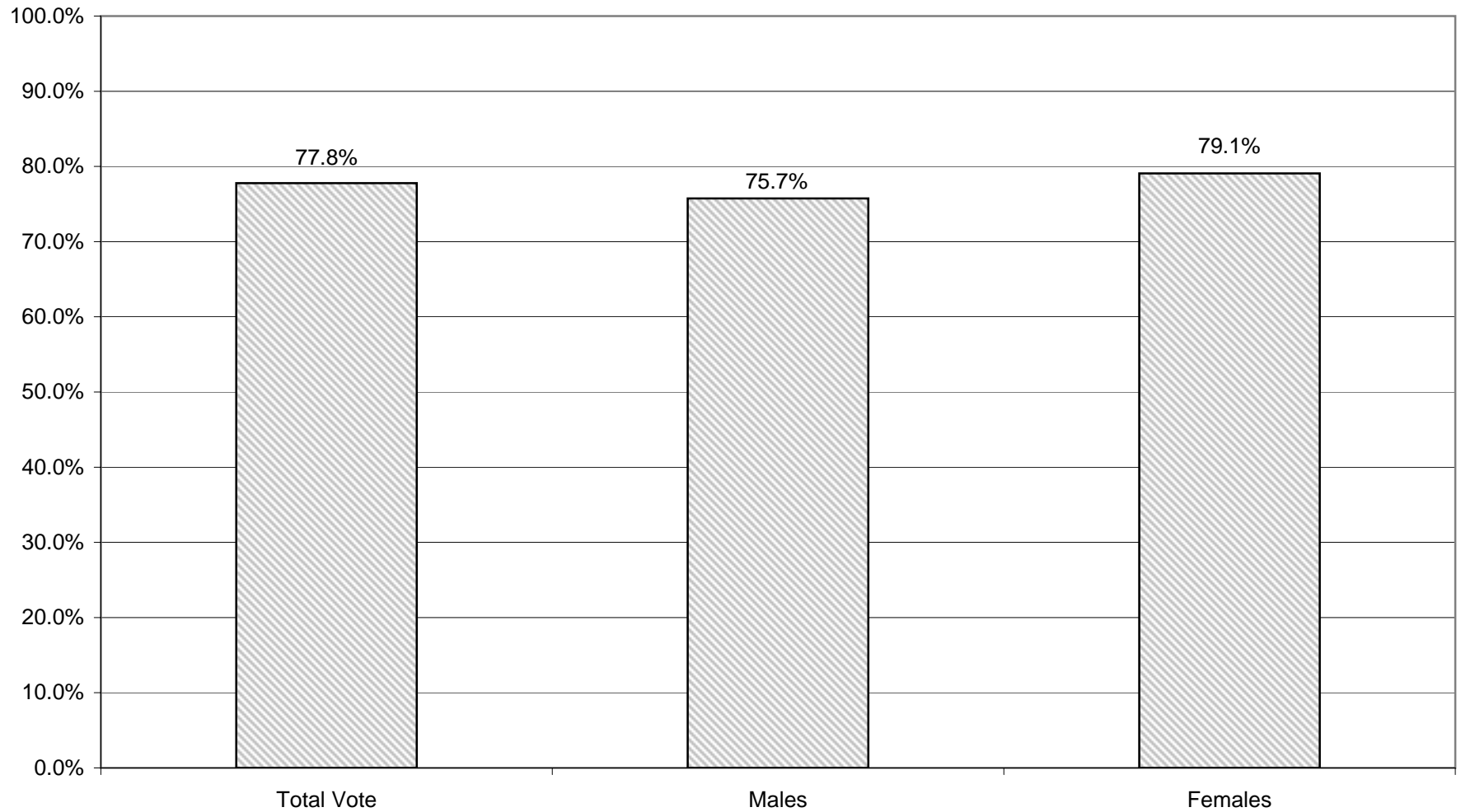
LEGISLATIVE DISTRICT OR TOWN	45-54			55-64			65+		
	VOTED	REGISTERED	TURNOUT	VOTED	REGISTERED	TURNOUT	VOTED	REGISTERED	TURNOUT
<b>CITY</b>									
Leg. Dist. 06	188	229	82.10 %	146	169	86.39 %	162	210	77.14 %
Leg. Dist. 07	129	145	88.97 %	90	101	89.11 %	121	149	81.21 %
Leg. Dist. 21	1,170	1,490	78.52 %	735	939	78.27 %	652	878	74.26 %
Leg. Dist. 22	934	1,438	64.95 %	645	954	67.61 %	552	875	63.09 %
Leg. Dist. 23	944	1,092	86.45 %	867	938	92.43 %	506	603	83.91 %
Leg. Dist. 24	706	800	88.25 %	468	534	87.64 %	433	560	77.32 %
Leg. Dist. 25	889	1,318	67.45 %	784	1,033	75.90 %	862	1,176	73.30 %
Leg. Dist. 26	514	650	79.08 %	333	402	82.84 %	308	384	80.21 %
Leg. Dist. 27	1,477	1,919	76.97 %	1,176	1,426	82.47 %	828	1,100	75.27 %
Leg. Dist. 28	714	1,072	66.60 %	516	722	71.47 %	488	667	73.16 %
Leg. Dist. 29	873	1,275	68.47 %	785	988	79.45 %	782	1,052	74.33 %
<b>TOTAL:</b>	<b>8,538</b>	<b>11,428</b>	<b>74.71 %</b>	<b>6,545</b>	<b>8,206</b>	<b>79.76 %</b>	<b>5,694</b>	<b>7,654</b>	<b>74.39 %</b>
<b>TOWNS</b>									
Brighton	1,864	1,986	93.86 %	1,429	1,520	94.01 %	1,667	1,924	86.64 %
Chili	1,003	1,136	88.29 %	821	917	89.53 %	734	851	86.25 %
Clarkson	185	208	88.94 %	138	152	90.79 %	127	165	76.97 %
East Rochester	189	226	83.63 %	128	149	85.91 %	167	208	80.29 %
Gates	857	1,039	82.48 %	877	1,030	85.15 %	1,211	1,519	79.72 %
Greece	3,174	3,724	85.23 %	2,382	2,712	87.83 %	2,683	3,317	80.89 %
Hamlin	235	274	85.77 %	187	208	89.90 %	111	146	76.03 %
Henrietta	1,162	1,329	87.43 %	959	1,075	89.21 %	1,022	1,222	83.63 %
Irondequoit	2,164	2,481	87.22 %	1,632	1,815	89.92 %	2,422	2,970	81.55 %
Mendon	387	408	94.85 %	249	268	92.91 %	147	167	88.02 %
Ogden	620	693	89.47 %	409	456	89.69 %	372	449	82.85 %
Parma	454	525	86.48 %	321	357	89.92 %	275	350	78.57 %
Penfield	1,437	1,548	92.83 %	1,048	1,148	91.29 %	1,117	1,341	83.30 %
Perinton	1,880	2,035	92.38 %	1,563	1,680	93.04 %	1,263	1,482	85.22 %
Pittsford	1,223	1,310	93.36 %	913	968	94.32 %	856	953	89.82 %
Riga	176	201	87.56 %	121	135	89.63 %	97	118	82.20 %
Rush	154	166	92.77 %	107	112	95.54 %	81	94	86.17 %
Sweden	375	412	91.02 %	311	337	92.28 %	246	293	83.96 %
Webster	1,428	1,558	91.66 %	1,216	1,331	91.36 %	1,302	1,540	84.55 %
Wheatland	173	194	89.18 %	164	173	94.80 %	158	170	92.94 %
<b>TOTAL:</b>	<b>19,140</b>	<b>21,453</b>	<b>89.22 %</b>	<b>14,975</b>	<b>16,543</b>	<b>90.52 %</b>	<b>16,058</b>	<b>19,279</b>	<b>83.29 %</b>
<b>GRAND TOTAL:</b>	<b>27,678</b>	<b>32,881</b>	<b>84.18 %</b>	<b>21,520</b>	<b>24,749</b>	<b>86.95 %</b>	<b>21,752</b>	<b>26,933</b>	<b>80.76 %</b>

2004 GENERAL ELECTION  
DEMOCRATIC TURNOUT BY AGE

LT/LD SUMMARY  
Part 2 of 2

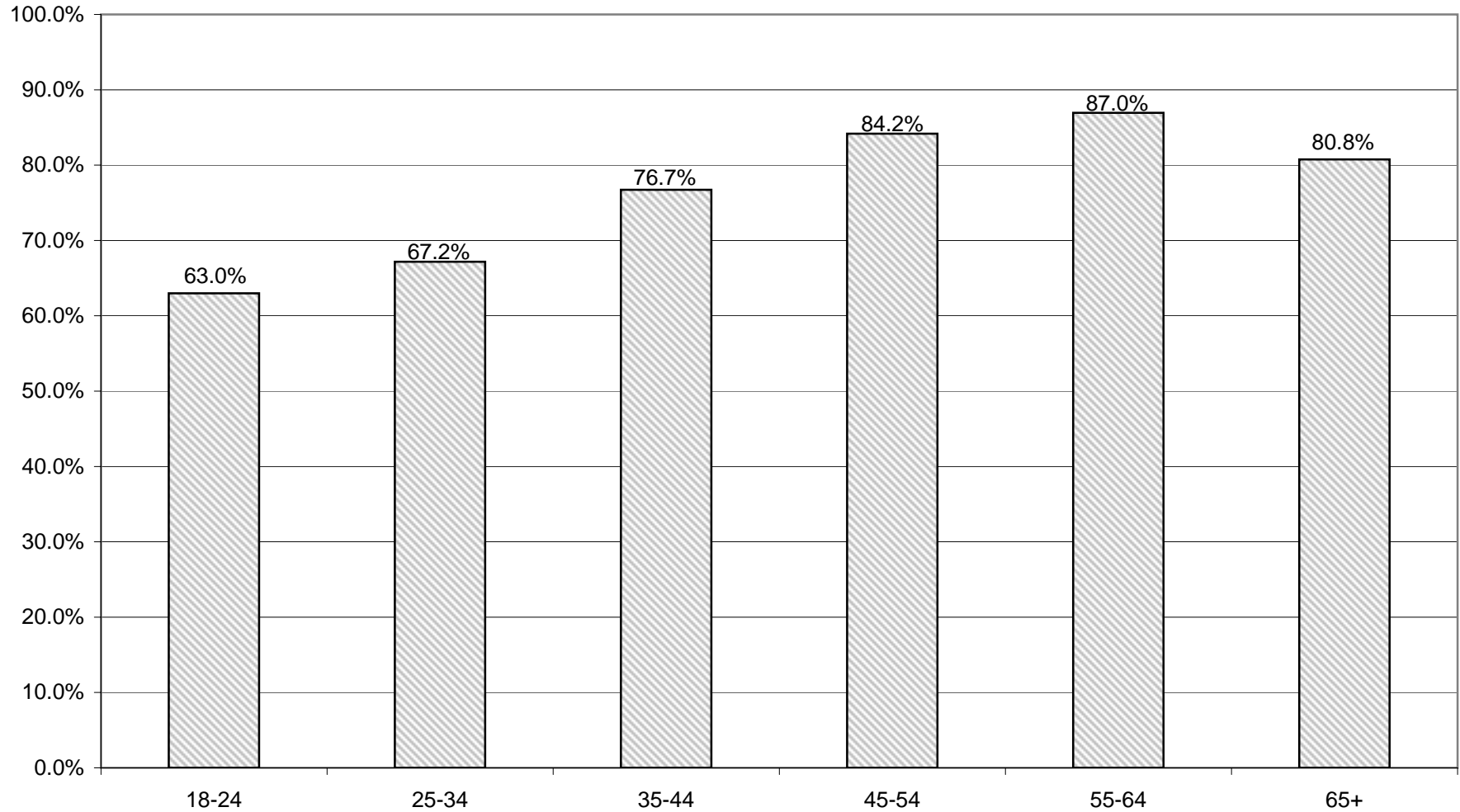
LEGISLATIVE DISTRICT OR TOWN	45-54			55-64			65+		
	VOTED	REGISTERED	TURNOUT	VOTED	REGISTERED	TURNOUT	VOTED	REGISTERED	TURNOUT
<b>CITY</b>									
Leg. Dist. 06	188	229	82.10 %	146	169	86.39 %	162	210	77.14 %
Leg. Dist. 07	129	145	88.97 %	90	101	89.11 %	121	149	81.21 %
Leg. Dist. 21	1,170	1,490	78.52 %	735	939	78.27 %	652	878	74.26 %
Leg. Dist. 22	934	1,438	64.95 %	645	954	67.61 %	552	875	63.09 %
Leg. Dist. 23	944	1,092	86.45 %	867	938	92.43 %	506	603	83.91 %
Leg. Dist. 24	706	800	88.25 %	468	534	87.64 %	433	560	77.32 %
Leg. Dist. 25	889	1,318	67.45 %	784	1,033	75.90 %	862	1,176	73.30 %
Leg. Dist. 26	514	650	79.08 %	333	402	82.84 %	308	384	80.21 %
Leg. Dist. 27	1,477	1,919	76.97 %	1,176	1,426	82.47 %	828	1,100	75.27 %
Leg. Dist. 28	714	1,072	66.60 %	516	722	71.47 %	488	667	73.16 %
Leg. Dist. 29	873	1,275	68.47 %	785	988	79.45 %	782	1,052	74.33 %
<b>TOTAL:</b>	<b>8,538</b>	<b>11,428</b>	<b>74.71 %</b>	<b>6,545</b>	<b>8,206</b>	<b>79.76 %</b>	<b>5,694</b>	<b>7,654</b>	<b>74.39 %</b>
<b>TOWNS</b>									
Brighton	1,864	1,986	93.86 %	1,429	1,520	94.01 %	1,667	1,924	86.64 %
Chili	1,003	1,136	88.29 %	821	917	89.53 %	734	851	86.25 %
Clarkson	185	208	88.94 %	138	152	90.79 %	127	165	76.97 %
East Rochester	189	226	83.63 %	128	149	85.91 %	167	208	80.29 %
Gates	857	1,039	82.48 %	877	1,030	85.15 %	1,211	1,519	79.72 %
Greece	3,174	3,724	85.23 %	2,382	2,712	87.83 %	2,683	3,317	80.89 %
Hamlin	235	274	85.77 %	187	208	89.90 %	111	146	76.03 %
Henrietta	1,162	1,329	87.43 %	959	1,075	89.21 %	1,022	1,222	83.63 %
Irondequoit	2,164	2,481	87.22 %	1,632	1,815	89.92 %	2,422	2,970	81.55 %
Mendon	387	408	94.85 %	249	268	92.91 %	147	167	88.02 %
Ogden	620	693	89.47 %	409	456	89.69 %	372	449	82.85 %
Parma	454	525	86.48 %	321	357	89.92 %	275	350	78.57 %
Penfield	1,437	1,548	92.83 %	1,048	1,148	91.29 %	1,117	1,341	83.30 %
Perinton	1,880	2,035	92.38 %	1,563	1,680	93.04 %	1,263	1,482	85.22 %
Pittsford	1,223	1,310	93.36 %	913	968	94.32 %	856	953	89.82 %
Riga	176	201	87.56 %	121	135	89.63 %	97	118	82.20 %
Rush	154	166	92.77 %	107	112	95.54 %	81	94	86.17 %
Sweden	375	412	91.02 %	311	337	92.28 %	246	293	83.96 %
Webster	1,428	1,558	91.66 %	1,216	1,331	91.36 %	1,302	1,540	84.55 %
Wheatland	173	194	89.18 %	164	173	94.80 %	158	170	92.94 %
<b>TOTAL:</b>	<b>19,140</b>	<b>21,453</b>	<b>89.22 %</b>	<b>14,975</b>	<b>16,543</b>	<b>90.52 %</b>	<b>16,058</b>	<b>19,279</b>	<b>83.29 %</b>
<b>GRAND TOTAL:</b>	<b>27,678</b>	<b>32,881</b>	<b>84.18 %</b>	<b>21,520</b>	<b>24,749</b>	<b>86.95 %</b>	<b>21,752</b>	<b>26,933</b>	<b>80.76 %</b>

# DEMOCRATIC TURNOUT - TOTAL AND GENDER 2004 GENERAL ELECTION





## DEMOCRATIC TURNOUT BY AGE GROUP 2004 GENERAL ELECTION



# **INDEPENDENCE SUMMARY**

2004 GENERAL ELECTION  
INDEPENDENCE TURNOUT BY GENDER

LT/LD SUMMARY

LEGISLATIVE DISTRICT OR TOWN <b>CITY</b>	TOTAL VOTERS			MALES			FEMALES		
	VOTED	REGISTERED	TURNOUT	VOTED	REGISTERED	TURNOUT	VOTED	REGISTERED	TURNOUT
Leg. Dist. 06	82	112	73.21 %	40	55	72.73 %	42	57	73.68 %
Leg. Dist. 07	43	58	74.14 %	18	26	69.23 %	25	32	78.13 %
Leg. Dist. 21	289	421	68.65 %	131	199	65.83 %	158	222	71.17 %
Leg. Dist. 22	76	175	43.43 %	39	90	43.33 %	37	85	43.53 %
Leg. Dist. 23	420	551	76.23 %	203	278	73.02 %	217	273	79.49 %
Leg. Dist. 24	206	270	76.30 %	105	143	73.43 %	101	127	79.53 %
Leg. Dist. 25	165	261	63.22 %	85	138	61.59 %	80	123	65.04 %
Leg. Dist. 26	146	218	66.97 %	71	103	68.93 %	75	115	65.22 %
Leg. Dist. 27	177	284	62.32 %	90	162	55.56 %	87	122	71.31 %
Leg. Dist. 28	165	272	60.66 %	82	137	59.85 %	83	135	61.48 %
Leg. Dist. 29	153	260	58.85 %	71	120	59.17 %	82	140	58.57 %
<b>TOTAL:</b>	<b>1,922</b>	<b>2,882</b>	<b>66.69 %</b>	<b>935</b>	<b>1,451</b>	<b>64.44 %</b>	<b>987</b>	<b>1,431</b>	<b>68.97 %</b>
<b>TOWNS</b>									
Brighton	480	622	77.17 %	210	282	74.47 %	270	340	79.41 %
Chili	401	542	73.99 %	185	261	70.88 %	216	281	76.87 %
Clarkson	99	135	73.33 %	47	64	73.44 %	52	71	73.24 %
East Rochester	104	146	71.23 %	44	68	64.71 %	60	78	76.92 %
Gates	331	453	73.07 %	161	227	70.93 %	170	226	75.22 %
Greece	1,366	1,897	72.01 %	633	888	71.28 %	733	1,009	72.65 %
Hamlin	129	180	71.67 %	63	86	73.26 %	66	94	70.21 %
Henrietta	495	650	76.15 %	243	335	72.54 %	252	315	80.00 %
Irondequoit	813	1,057	76.92 %	383	501	76.45 %	430	556	77.34 %
Mendon	130	172	75.58 %	55	78	70.51 %	75	94	79.79 %
Ogden	253	329	76.90 %	118	161	73.29 %	135	168	80.36 %
Parma	214	293	73.04 %	102	138	73.91 %	112	155	72.26 %
Penfield	603	768	78.52 %	264	349	75.64 %	339	419	80.91 %
Perinton	799	1,036	77.12 %	351	468	75.00 %	448	568	78.87 %
Pittsford	367	473	77.59 %	148	203	72.91 %	219	270	81.11 %
Riga	91	124	73.39 %	35	51	68.63 %	56	73	76.71 %
Rush	48	62	77.42 %	19	27	70.37 %	29	35	82.86 %
Sweden	167	239	69.87 %	84	125	67.20 %	83	114	72.81 %
Webster	648	863	75.09 %	294	403	72.95 %	354	460	76.96 %
Wheatland	73	99	73.74 %	35	51	68.63 %	38	48	79.17 %
<b>TOTAL:</b>	<b>7,611</b>	<b>10,140</b>	<b>75.06 %</b>	<b>3,474</b>	<b>4,766</b>	<b>72.89 %</b>	<b>4,137</b>	<b>5,374</b>	<b>76.98 %</b>
<b>GRAND TOTAL:</b>	<b>9,533</b>	<b>13,022</b>	<b>73.21 %</b>	<b>4,409</b>	<b>6,217</b>	<b>70.92 %</b>	<b>5,124</b>	<b>6,805</b>	<b>75.30 %</b>

2004 GENERAL ELECTION  
INDEPENDENCE TURNOUT BY AGE

LT/LD SUMMARY  
Part 1 of 2

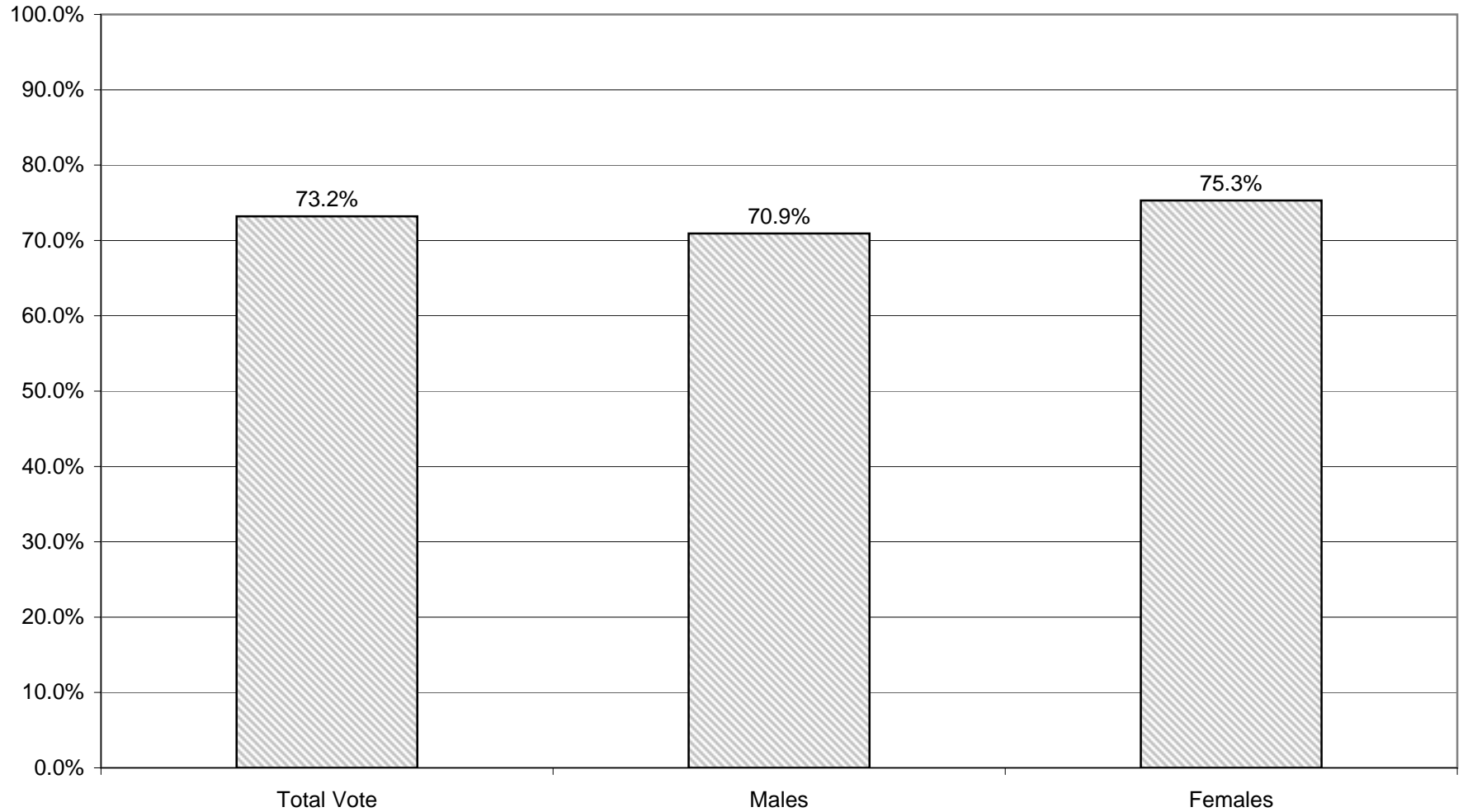
LEGISLATIVE DISTRICT OR TOWN CITY	NDOB			18-24			25-34			35-44		
	VOTED	REGISTERED	TURNOUT	VOTED	REGISTERED	TURNOUT	VOTED	REGISTERED	TURNOUT	VOTED	REGISTERED	TURNOUT
Leg. Dist. 06	0	1	0.00 %	8	13	61.54 %	25	37	67.57 %	18	24	75.00 %
Leg. Dist. 07	0	0	0.00 %	4	7	57.14 %	10	13	76.92 %	7	11	63.64 %
Leg. Dist. 21	0	0	0.00 %	36	65	55.38 %	109	158	68.99 %	64	93	68.82 %
Leg. Dist. 22	0	0	0.00 %	15	43	34.88 %	32	59	54.24 %	8	28	28.57 %
Leg. Dist. 23	0	0	0.00 %	64	90	71.11 %	204	267	76.40 %	75	101	74.26 %
Leg. Dist. 24	2	2	100.00 %	33	42	78.57 %	59	84	70.24 %	66	79	83.54 %
Leg. Dist. 25	0	0	0.00 %	28	50	56.00 %	49	71	69.01 %	34	58	58.62 %
Leg. Dist. 26	0	0	0.00 %	33	54	61.11 %	45	67	67.16 %	36	48	75.00 %
Leg. Dist. 27	0	0	0.00 %	22	46	47.83 %	51	84	60.71 %	43	70	61.43 %
Leg. Dist. 28	0	0	0.00 %	23	49	46.94 %	54	89	60.67 %	39	58	67.24 %
Leg. Dist. 29	0	0	0.00 %	28	53	52.83 %	50	84	59.52 %	32	56	57.14 %
<b>TOTAL:</b>	<b>2</b>	<b>3</b>	<b>66.67 %</b>	<b>294</b>	<b>512</b>	<b>57.42 %</b>	<b>688</b>	<b>1,013</b>	<b>67.92 %</b>	<b>422</b>	<b>626</b>	<b>67.41 %</b>
<b>TOWNS</b>												
Brighton	0	0	0.00 %	69	105	65.71 %	127	177	71.75 %	112	134	83.58 %
Chili	0	0	0.00 %	79	121	65.29 %	101	150	67.33 %	101	119	84.87 %
Clarkson	0	0	0.00 %	14	24	58.33 %	24	31	77.42 %	35	44	79.55 %
East Rochester	0	0	0.00 %	12	21	57.14 %	32	41	78.05 %	26	39	66.67 %
Gates	0	0	0.00 %	43	72	59.72 %	83	119	69.75 %	89	110	80.91 %
Greece	0	0	0.00 %	257	392	65.56 %	297	459	64.71 %	347	458	75.76 %
Hamlin	0	0	0.00 %	26	34	76.47 %	24	45	53.33 %	30	43	69.77 %
Henrietta	0	0	0.00 %	107	143	74.83 %	132	189	69.84 %	124	151	82.12 %
Irondequoit	0	0	0.00 %	134	188	71.28 %	202	279	72.40 %	181	229	79.04 %
Mendon	0	0	0.00 %	21	35	60.00 %	10	22	45.45 %	38	45	84.44 %
Ogden	0	0	0.00 %	49	77	63.64 %	55	75	73.33 %	79	94	84.04 %
Parma	0	0	0.00 %	34	49	69.39 %	45	70	64.29 %	59	71	83.10 %
Penfield	0	0	0.00 %	107	155	69.03 %	109	153	71.24 %	150	175	85.71 %
Perinton	0	0	0.00 %	116	184	63.04 %	163	240	67.92 %	231	276	83.70 %
Pittsford	0	0	0.00 %	49	90	54.44 %	53	77	68.83 %	112	131	85.50 %
Riga	0	0	0.00 %	21	36	58.33 %	16	23	69.57 %	23	29	79.31 %
Rush	0	0	0.00 %	8	11	72.73 %	6	10	60.00 %	16	20	80.00 %
Sweden	0	0	0.00 %	50	67	74.63 %	39	54	72.22 %	31	48	64.58 %
Webster	0	0	0.00 %	98	163	60.12 %	127	187	67.91 %	181	224	80.80 %
Wheatland	0	0	0.00 %	11	18	61.11 %	21	27	77.78 %	22	27	81.48 %
<b>TOTAL:</b>	<b>0</b>	<b>0</b>	<b>0.00 %</b>	<b>1,305</b>	<b>1,985</b>	<b>65.74 %</b>	<b>1,666</b>	<b>2,428</b>	<b>68.62 %</b>	<b>1,987</b>	<b>2,467</b>	<b>80.54 %</b>
<b>GRAND TOTAL:</b>	<b>2</b>	<b>3</b>	<b>66.67 %</b>	<b>1,599</b>	<b>2,497</b>	<b>64.04 %</b>	<b>2,354</b>	<b>3,441</b>	<b>68.41 %</b>	<b>2,409</b>	<b>3,093</b>	<b>77.89 %</b>

2004 GENERAL ELECTION  
INDEPENDENCE TURNOUT BY AGE

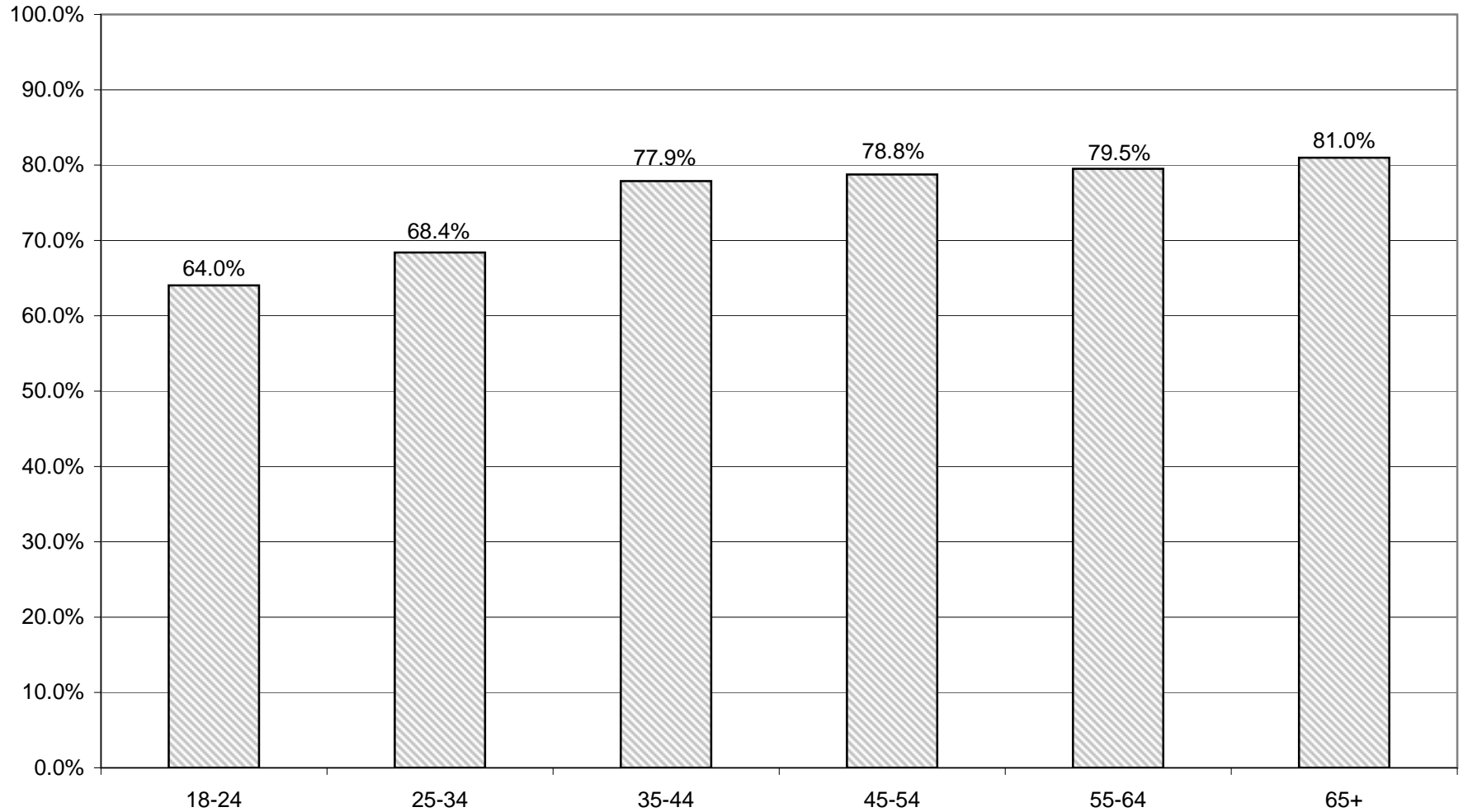
LT/LD SUMMARY  
Part 2 of 2

LEGISLATIVE DISTRICT OR TOWN	45-54			55-64			65+		
	VOTED	REGISTERED	TURNOUT	VOTED	REGISTERED	TURNOUT	VOTED	REGISTERED	TURNOUT
<b>CITY</b>									
Leg. Dist. 06	18	23	78.26 %	6	6	100.00 %	7	8	87.50 %
Leg. Dist. 07	11	15	73.33 %	7	8	87.50 %	4	4	100.00 %
Leg. Dist. 21	44	56	78.57 %	23	30	76.67 %	13	19	68.42 %
Leg. Dist. 22	11	28	39.29 %	6	12	50.00 %	4	5	80.00 %
Leg. Dist. 23	43	51	84.31 %	26	31	83.87 %	8	11	72.73 %
Leg. Dist. 24	21	29	72.41 %	12	18	66.67 %	13	16	81.25 %
Leg. Dist. 25	31	48	64.58 %	16	19	84.21 %	7	15	46.67 %
Leg. Dist. 26	22	32	68.75 %	9	13	69.23 %	1	4	25.00 %
Leg. Dist. 27	36	52	69.23 %	15	20	75.00 %	10	12	83.33 %
Leg. Dist. 28	26	43	60.47 %	16	23	69.57 %	7	10	70.00 %
Leg. Dist. 29	18	32	56.25 %	15	19	78.95 %	10	16	62.50 %
<b>TOTAL:</b>	<b>281</b>	<b>409</b>	<b>68.70 %</b>	<b>151</b>	<b>199</b>	<b>75.88 %</b>	<b>84</b>	<b>120</b>	<b>70.00 %</b>
<b>TOWNS</b>									
Brighton	77	92	83.70 %	48	56	85.71 %	47	58	81.03 %
Chili	54	71	76.06 %	31	41	75.61 %	35	40	87.50 %
Clarkson	17	26	65.38 %	3	4	75.00 %	6	6	100.00 %
East Rochester	19	25	76.00 %	10	12	83.33 %	5	8	62.50 %
Gates	57	70	81.43 %	25	36	69.44 %	34	46	73.91 %
Greece	238	291	81.79 %	121	159	76.10 %	106	138	76.81 %
Hamlin	27	34	79.41 %	15	16	93.75 %	7	8	87.50 %
Henrietta	62	84	73.81 %	37	44	84.09 %	33	39	84.62 %
Irondequoit	156	187	83.42 %	70	88	79.55 %	70	86	81.40 %
Mendon	37	43	86.05 %	14	15	93.33 %	10	12	83.33 %
Ogden	36	41	87.80 %	22	28	78.57 %	12	14	85.71 %
Parma	46	63	73.02 %	18	23	78.26 %	12	17	70.59 %
Penfield	113	135	83.70 %	58	71	81.69 %	66	79	83.54 %
Perinton	129	156	82.69 %	81	92	88.04 %	79	88	89.77 %
Pittsford	78	88	88.64 %	30	38	78.95 %	45	49	91.84 %
Riga	16	20	80.00 %	9	10	90.00 %	6	6	100.00 %
Rush	7	8	87.50 %	9	11	81.82 %	2	2	100.00 %
Sweden	25	37	67.57 %	10	15	66.67 %	12	18	66.67 %
Webster	125	151	82.78 %	59	71	83.10 %	58	67	86.57 %
Wheatland	13	17	76.47 %	2	6	33.33 %	4	4	100.00 %
<b>TOTAL:</b>	<b>1,332</b>	<b>1,639</b>	<b>81.27 %</b>	<b>672</b>	<b>836</b>	<b>80.38 %</b>	<b>649</b>	<b>785</b>	<b>82.68 %</b>
<b>GRAND TOTAL:</b>	<b>1,613</b>	<b>2,048</b>	<b>78.76 %</b>	<b>823</b>	<b>1,035</b>	<b>79.52 %</b>	<b>733</b>	<b>905</b>	<b>80.99 %</b>

# INDEPENDENCE TURNOUT - TOTAL AND GENDER 2004 GENERAL ELECTION



# INDEPENDENCE TURNOUT BY AGE GROUP 2004 GENERAL ELECTION



# **CONSERVATIVE SUMMARY**



2004 GENERAL ELECTION  
CONSERVATIVE TURNOUT BY GENDER

LT/LD SUMMARY

LEGISLATIVE DISTRICT OR TOWN	TOTAL VOTERS			MALES			FEMALES		
	VOTED	REGISTERED	TURNOUT	VOTED	REGISTERED	TURNOUT	VOTED	REGISTERED	TURNOUT
<b>CITY</b>									
Leg. Dist. 06	82	106	77.36 %	40	56	71.43 %	42	50	84.00 %
Leg. Dist. 07	27	32	84.38 %	16	18	88.89 %	11	14	78.57 %
Leg. Dist. 21	90	121	74.38 %	56	74	75.68 %	34	47	72.34 %
Leg. Dist. 22	30	55	54.55 %	18	33	54.55 %	12	22	54.55 %
Leg. Dist. 23	89	106	83.96 %	53	62	85.48 %	36	44	81.82 %
Leg. Dist. 24	66	81	81.48 %	38	49	77.55 %	28	32	87.50 %
Leg. Dist. 25	41	56	73.21 %	22	33	66.67 %	19	23	82.61 %
Leg. Dist. 26	103	139	74.10 %	53	71	74.65 %	50	68	73.53 %
Leg. Dist. 27	65	89	73.03 %	38	51	74.51 %	27	38	71.05 %
Leg. Dist. 28	103	147	70.07 %	57	85	67.06 %	46	62	74.19 %
Leg. Dist. 29	84	120	70.00 %	52	74	70.27 %	32	46	69.57 %
<b>TOTAL:</b>	<b>780</b>	<b>1,052</b>	<b>74.14 %</b>	<b>443</b>	<b>606</b>	<b>73.10 %</b>	<b>337</b>	<b>446</b>	<b>75.56 %</b>
<b>TOWNS</b>									
Brighton	178	214	83.18 %	108	128	84.38 %	70	86	81.40 %
Chili	410	473	86.68 %	241	278	86.69 %	169	195	86.67 %
Clarkson	86	106	81.13 %	52	66	78.79 %	34	40	85.00 %
East Rochester	74	87	85.06 %	43	53	81.13 %	31	34	91.18 %
Gates	318	399	79.70 %	169	220	76.82 %	149	179	83.24 %
Greece	1,257	1,584	79.36 %	680	855	79.53 %	577	729	79.15 %
Hamlin	113	135	83.70 %	65	77	84.42 %	48	58	82.76 %
Henrietta	411	516	79.65 %	228	279	81.72 %	183	237	77.22 %
Irondequoit	584	733	79.67 %	327	399	81.95 %	257	334	76.95 %
Mendon	83	97	85.57 %	50	60	83.33 %	33	37	89.19 %
Ogden	295	360	81.94 %	147	181	81.22 %	148	179	82.68 %
Parma	207	260	79.62 %	124	151	82.12 %	83	109	76.15 %
Penfield	352	420	83.81 %	203	247	82.19 %	149	173	86.13 %
Perinton	403	487	82.75 %	248	300	82.67 %	155	187	82.89 %
Pittsford	175	199	87.94 %	110	126	87.30 %	65	73	89.04 %
Riga	69	83	83.13 %	42	49	85.71 %	27	34	79.41 %
Rush	48	55	87.27 %	27	31	87.10 %	21	24	87.50 %
Sweden	104	135	77.04 %	62	80	77.50 %	42	55	76.36 %
Webster	470	548	85.77 %	272	319	85.27 %	198	229	86.46 %
Wheatland	67	74	90.54 %	43	46	93.48 %	24	28	85.71 %
<b>TOTAL:</b>	<b>5,704</b>	<b>6,965</b>	<b>81.90 %</b>	<b>3,241</b>	<b>3,945</b>	<b>82.15 %</b>	<b>2,463</b>	<b>3,020</b>	<b>81.56 %</b>
<b>GRAND TOTAL:</b>	<b>6,484</b>	<b>8,017</b>	<b>80.88 %</b>	<b>3,684</b>	<b>4,551</b>	<b>80.95 %</b>	<b>2,800</b>	<b>3,466</b>	<b>80.78 %</b>

2004 GENERAL ELECTION  
CONSERVATIVE TURNOUT BY AGE

LT/LD SUMMARY

Part 1 of 2

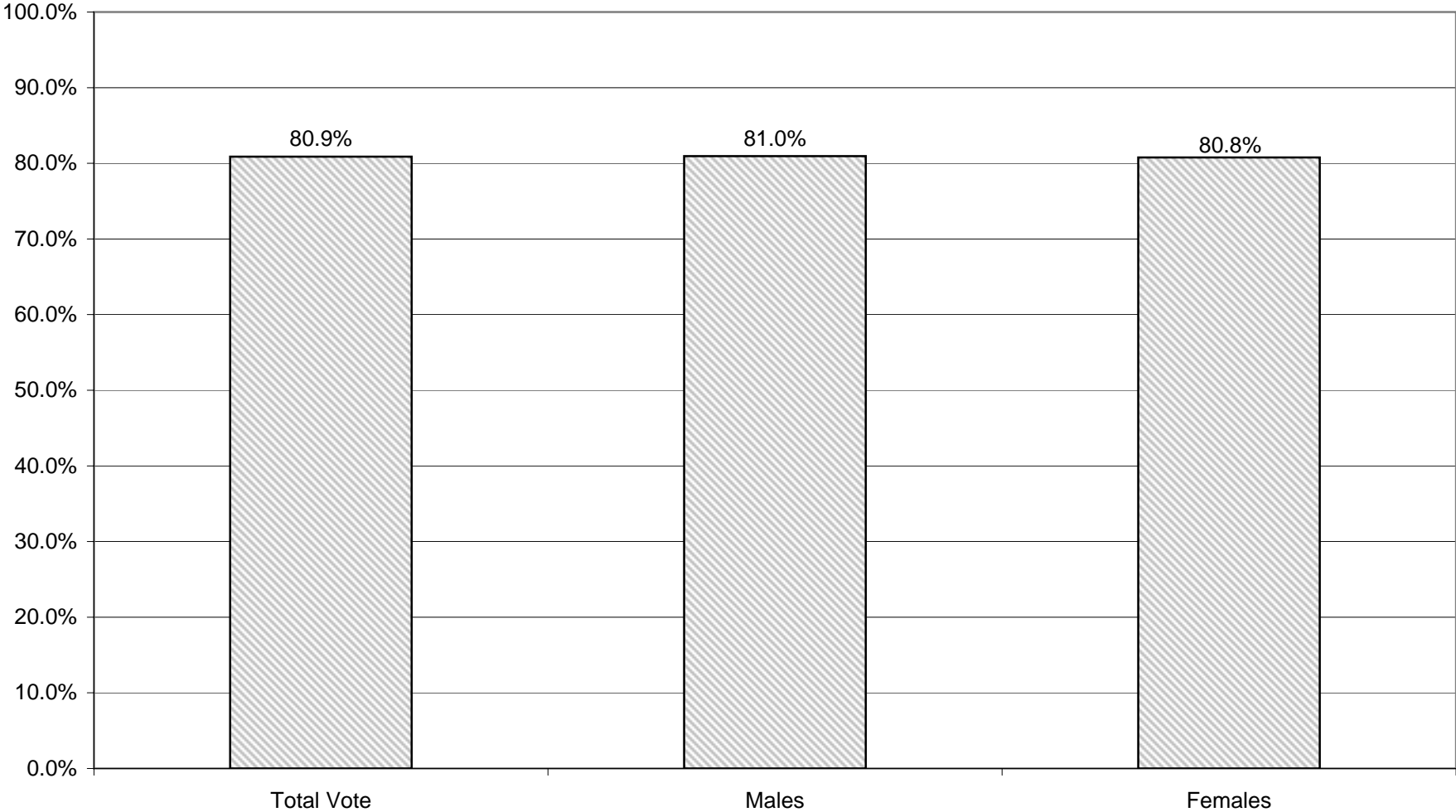
LEGISLATIVE DISTRICT OR TOWN CITY	NDOB			18-24			25-34			35-44		
	VOTED	REGISTERED	TURNOUT	VOTED	REGISTERED	TURNOUT	VOTED	REGISTERED	TURNOUT	VOTED	REGISTERED	TURNOUT
Leg. Dist. 06	1	1	100.00 %	6	7	85.71 %	14	21	66.67 %	22	27	81.48 %
Leg. Dist. 07	0	0	0.00 %	1	2	50.00 %	0	1	0.00 %	5	5	100.00 %
Leg. Dist. 21	3	3	100.00 %	8	11	72.73 %	14	21	66.67 %	13	22	59.09 %
Leg. Dist. 22	0	0	0.00 %	0	2	0.00 %	6	15	40.00 %	11	16	68.75 %
Leg. Dist. 23	1	1	100.00 %	2	3	66.67 %	21	26	80.77 %	16	20	80.00 %
Leg. Dist. 24	2	2	100.00 %	0	2	0.00 %	14	21	66.67 %	13	13	100.00 %
Leg. Dist. 25	2	2	100.00 %	0	1	0.00 %	6	10	60.00 %	8	13	61.54 %
Leg. Dist. 26	2	2	100.00 %	1	4	25.00 %	10	22	45.45 %	22	29	75.86 %
Leg. Dist. 27	2	2	100.00 %	2	6	33.33 %	11	13	84.62 %	15	21	71.43 %
Leg. Dist. 28	0	0	0.00 %	1	2	50.00 %	8	15	53.33 %	23	36	63.89 %
Leg. Dist. 29	0	0	0.00 %	4	7	57.14 %	13	22	59.09 %	16	24	66.67 %
<b>TOTAL:</b>	<b>13</b>	<b>13</b>	<b>100.00 %</b>	<b>25</b>	<b>47</b>	<b>53.19 %</b>	<b>117</b>	<b>187</b>	<b>62.57 %</b>	<b>164</b>	<b>226</b>	<b>72.57 %</b>
<b>TOWNS</b>												
Brighton	5	5	100.00 %	10	15	66.67 %	19	23	82.61 %	31	39	79.49 %
Chili	3	3	100.00 %	22	28	78.57 %	46	61	75.41 %	89	109	81.65 %
Clarkson	0	0	0.00 %	6	9	66.67 %	11	14	78.57 %	27	33	81.82 %
East Rochester	1	1	100.00 %	6	10	60.00 %	7	7	100.00 %	21	28	75.00 %
Gates	2	2	100.00 %	11	16	68.75 %	34	51	66.67 %	85	105	80.95 %
Greece	11	14	78.57 %	69	108	63.89 %	118	182	64.84 %	231	314	73.57 %
Hamlin	0	0	0.00 %	4	6	66.67 %	8	10	80.00 %	31	37	83.78 %
Henrietta	1	3	33.33 %	18	28	64.29 %	34	55	61.82 %	83	112	74.11 %
Irondequoit	11	12	91.67 %	20	32	62.50 %	54	83	65.06 %	104	140	74.29 %
Mendon	0	0	0.00 %	5	5	100.00 %	7	12	58.33 %	17	19	89.47 %
Ogden	2	2	100.00 %	18	23	78.26 %	22	36	61.11 %	62	83	74.70 %
Parma	0	0	0.00 %	8	16	50.00 %	21	32	65.63 %	49	64	76.56 %
Penfield	2	3	66.67 %	20	28	71.43 %	27	37	72.97 %	75	86	87.21 %
Perinton	0	0	0.00 %	14	17	82.35 %	35	50	70.00 %	58	72	80.56 %
Pittsford	3	3	100.00 %	4	6	66.67 %	9	12	75.00 %	34	41	82.93 %
Riga	0	0	0.00 %	1	2	50.00 %	6	10	60.00 %	23	25	92.00 %
Rush	0	0	0.00 %	2	2	100.00 %	2	3	66.67 %	11	14	78.57 %
Sweden	0	0	0.00 %	5	8	62.50 %	12	19	63.16 %	34	43	79.07 %
Webster	2	2	100.00 %	19	28	67.86 %	45	65	69.23 %	104	126	82.54 %
Wheatland	0	0	0.00 %	4	4	100.00 %	6	6	100.00 %	14	17	82.35 %
<b>TOTAL:</b>	<b>43</b>	<b>50</b>	<b>86.00 %</b>	<b>266</b>	<b>391</b>	<b>68.03 %</b>	<b>523</b>	<b>768</b>	<b>68.10 %</b>	<b>1,183</b>	<b>1,507</b>	<b>78.50 %</b>
<b>GRAND TOTAL:</b>	<b>56</b>	<b>63</b>	<b>88.89 %</b>	<b>291</b>	<b>438</b>	<b>66.44 %</b>	<b>640</b>	<b>955</b>	<b>67.02 %</b>	<b>1,347</b>	<b>1,733</b>	<b>77.73 %</b>

2004 GENERAL ELECTION  
CONSERVATIVE TURNOUT BY AGE

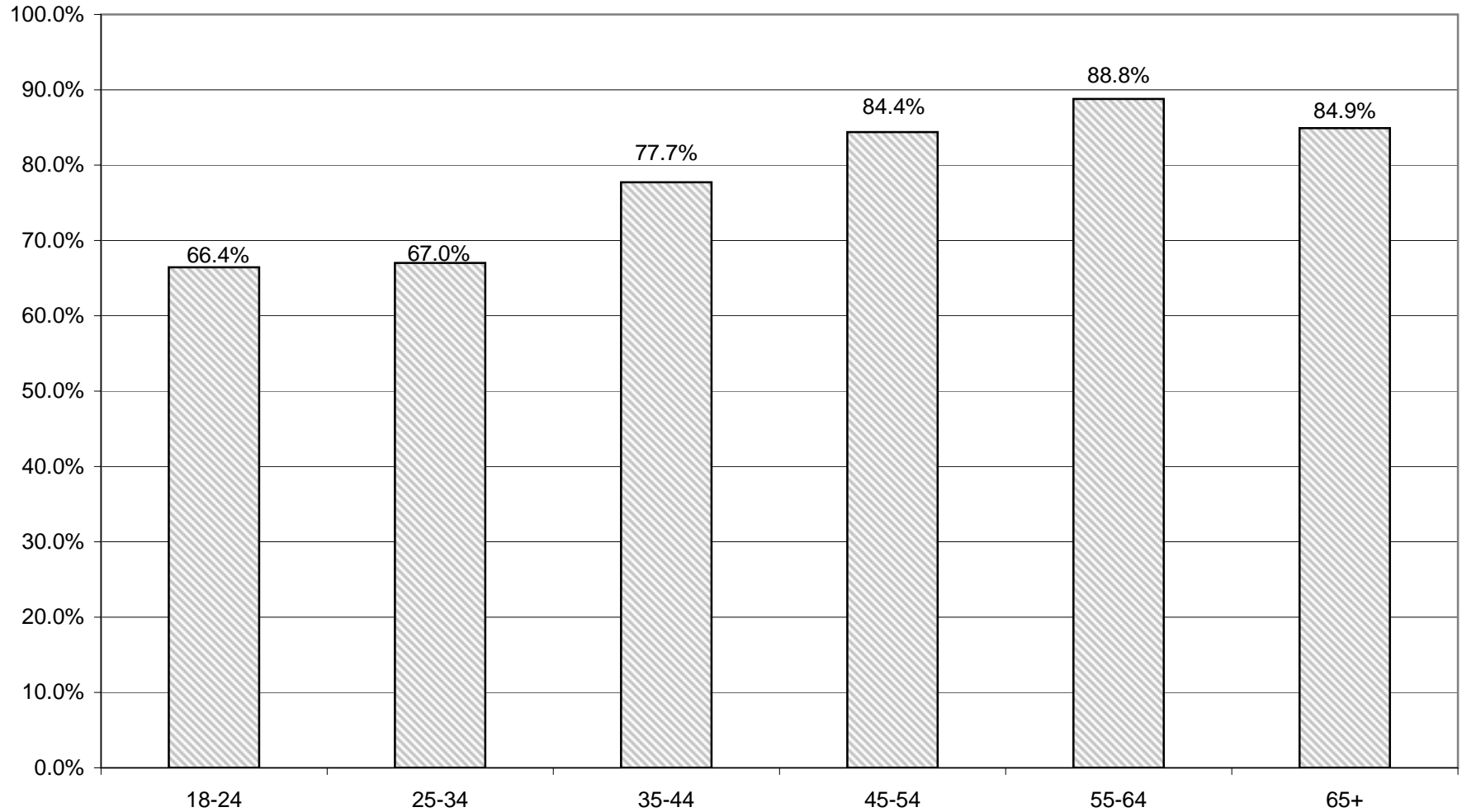
LT/LD SUMMARY  
Part 2 of 2

LEGISLATIVE DISTRICT OR TOWN CITY	45-54			55-64			65+		
	VOTED	REGISTERED	TURNOUT	VOTED	REGISTERED	TURNOUT	VOTED	REGISTERED	TURNOUT
Leg. Dist. 06	15	21	71.43 %	18	19	94.74 %	6	10	60.00 %
Leg. Dist. 07	9	12	75.00 %	10	10	100.00 %	2	2	100.00 %
Leg. Dist. 21	31	39	79.49 %	16	19	84.21 %	5	6	83.33 %
Leg. Dist. 22	7	11	63.64 %	4	7	57.14 %	2	4	50.00 %
Leg. Dist. 23	19	25	76.00 %	18	18	100.00 %	12	13	92.31 %
Leg. Dist. 24	14	18	77.78 %	11	13	84.62 %	12	12	100.00 %
Leg. Dist. 25	12	15	80.00 %	7	9	77.78 %	6	6	100.00 %
Leg. Dist. 26	33	44	75.00 %	22	23	95.65 %	13	15	86.67 %
Leg. Dist. 27	13	20	65.00 %	17	21	80.95 %	5	6	83.33 %
Leg. Dist. 28	36	47	76.60 %	21	30	70.00 %	14	17	82.35 %
Leg. Dist. 29	18	27	66.67 %	24	31	77.42 %	9	9	100.00 %
<b>TOTAL:</b>	<b>207</b>	<b>279</b>	<b>74.19 %</b>	<b>168</b>	<b>200</b>	<b>84.00 %</b>	<b>86</b>	<b>100</b>	<b>86.00 %</b>
<b>TOWNS</b>									
Brighton	41	46	89.13 %	33	37	89.19 %	39	49	79.59 %
Chili	101	113	89.38 %	85	89	95.51 %	64	70	91.43 %
Clarkson	26	33	78.79 %	13	13	100.00 %	3	4	75.00 %
East Rochester	24	26	92.31 %	12	12	100.00 %	3	3	100.00 %
Gates	81	96	84.38 %	67	77	87.01 %	38	52	73.08 %
Greece	396	472	83.90 %	249	284	87.68 %	183	210	87.14 %
Hamlin	48	55	87.27 %	15	17	88.24 %	7	10	70.00 %
Henrietta	110	127	86.61 %	105	118	88.98 %	60	73	82.19 %
Irondequoit	165	193	85.49 %	130	151	86.09 %	100	122	81.97 %
Mendon	26	30	86.67 %	17	19	89.47 %	11	12	91.67 %
Ogden	97	114	85.09 %	59	64	92.19 %	35	38	92.11 %
Parma	56	68	82.35 %	49	53	92.45 %	24	27	88.89 %
Penfield	99	114	86.84 %	87	98	88.78 %	42	54	77.78 %
Perinton	93	114	81.58 %	113	129	87.60 %	90	105	85.71 %
Pittsford	34	38	89.47 %	58	64	90.63 %	33	35	94.29 %
Riga	18	21	85.71 %	16	18	88.89 %	5	7	71.43 %
Rush	14	17	82.35 %	14	14	100.00 %	5	5	100.00 %
Sweden	31	39	79.49 %	17	20	85.00 %	5	6	83.33 %
Webster	145	153	94.77 %	97	106	91.51 %	58	68	85.29 %
Wheatland	20	23	86.96 %	14	14	100.00 %	9	10	90.00 %
<b>TOTAL:</b>	<b>1,625</b>	<b>1,892</b>	<b>85.89 %</b>	<b>1,250</b>	<b>1,397</b>	<b>89.48 %</b>	<b>814</b>	<b>960</b>	<b>84.79 %</b>
<b>GRAND TOTAL:</b>	<b>1,832</b>	<b>2,171</b>	<b>84.39 %</b>	<b>1,418</b>	<b>1,597</b>	<b>88.79 %</b>	<b>900</b>	<b>1,060</b>	<b>84.91 %</b>

# CONSERVATIVE TURNOUT - TOTAL AND GENDER 2004 GENERAL ELECTION



## CONSERVATIVE TURNOUT BY AGE GROUP 2004 GENERAL ELECTION



# **WORKING FAMILIES SUMMARY**

2004 GENERAL ELECTION  
WORKING FAMILIES TURNOUT BY GENDER

LT/LD SUMMARY

LEGISLATIVE DISTRICT OR TOWN <b>CITY</b>	TOTAL VOTERS			MALES			FEMALES		
	VOTED	REGISTERED	TURNOUT	VOTED	REGISTERED	TURNOUT	VOTED	REGISTERED	TURNOUT
Leg. Dist. 06	5	7	71.43 %	1	2	50.00 %	4	5	80.00 %
Leg. Dist. 07	2	2	100.00 %	2	2	100.00 %	0	0	0.00 %
Leg. Dist. 21	21	46	45.65 %	6	16	37.50 %	15	30	50.00 %
Leg. Dist. 22	21	61	34.43 %	3	18	16.67 %	18	43	41.86 %
Leg. Dist. 23	20	34	58.82 %	9	13	69.23 %	11	21	52.38 %
Leg. Dist. 24	8	14	57.14 %	4	5	80.00 %	4	9	44.44 %
Leg. Dist. 25	18	34	52.94 %	11	18	61.11 %	7	16	43.75 %
Leg. Dist. 26	28	39	71.79 %	12	18	66.67 %	16	21	76.19 %
Leg. Dist. 27	25	61	40.98 %	6	18	33.33 %	19	43	44.19 %
Leg. Dist. 28	17	50	34.00 %	5	22	22.73 %	12	28	42.86 %
Leg. Dist. 29	12	47	25.53 %	5	16	31.25 %	7	31	22.58 %
<b>TOTAL:</b>	<b>177</b>	<b>395</b>	<b>44.81 %</b>	<b>64</b>	<b>148</b>	<b>43.24 %</b>	<b>113</b>	<b>247</b>	<b>45.75 %</b>
<b>TOWNS</b>									
Brighton	17	23	73.91 %	8	10	80.00 %	9	13	69.23 %
Chili	20	31	64.52 %	12	16	75.00 %	8	15	53.33 %
Clarkson	5	8	62.50 %	1	2	50.00 %	4	6	66.67 %
East Rochester	5	12	41.67 %	3	5	60.00 %	2	7	28.57 %
Gates	18	27	66.67 %	9	13	69.23 %	9	14	64.29 %
Greece	77	117	65.81 %	29	42	69.05 %	48	75	64.00 %
Hamlin	6	8	75.00 %	2	3	66.67 %	4	5	80.00 %
Henrietta	18	28	64.29 %	8	13	61.54 %	10	15	66.67 %
Irondequoit	31	44	70.45 %	14	23	60.87 %	17	21	80.95 %
Mendon	0	4	0.00 %	0	3	0.00 %	0	1	0.00 %
Ogden	14	21	66.67 %	9	13	69.23 %	5	8	62.50 %
Parma	14	20	70.00 %	10	14	71.43 %	4	6	66.67 %
Penfield	12	24	50.00 %	5	11	45.45 %	7	13	53.85 %
Perinton	13	21	61.90 %	5	9	55.56 %	8	12	66.67 %
Pittsford	11	13	84.62 %	2	3	66.67 %	9	10	90.00 %
Riga	4	8	50.00 %	2	5	40.00 %	2	3	66.67 %
Rush	4	5	80.00 %	4	5	80.00 %	0	0	0.00 %
Sweden	4	9	44.44 %	1	3	33.33 %	3	6	50.00 %
Webster	14	22	63.64 %	8	11	72.73 %	6	11	54.55 %
Wheatland	3	5	60.00 %	2	4	50.00 %	1	1	100.00 %
<b>TOTAL:</b>	<b>290</b>	<b>450</b>	<b>64.44 %</b>	<b>134</b>	<b>208</b>	<b>64.42 %</b>	<b>156</b>	<b>242</b>	<b>64.46 %</b>
<b>GRAND TOTAL:</b>	<b>467</b>	<b>845</b>	<b>55.27 %</b>	<b>198</b>	<b>356</b>	<b>55.62 %</b>	<b>269</b>	<b>489</b>	<b>55.01 %</b>

2004 GENERAL ELECTION  
WORKING FAMILIES TURNOUT BY AGE

LT/LD SUMMARY  
Part 1 of 2

LEGISLATIVE DISTRICT OR TOWN CITY	NDOB			18-24			25-34			35-44		
	VOTED	REGISTERED	TURNOUT	VOTED	REGISTERED	TURNOUT	VOTED	REGISTERED	TURNOUT	VOTED	REGISTERED	TURNOUT
Leg. Dist. 06	0	0	0.00 %	0	1	0.00 %	2	2	100.00 %	3	4	75.00 %
Leg. Dist. 07	0	0	0.00 %	1	1	100.00 %	0	0	0.00 %	0	0	0.00 %
Leg. Dist. 21	0	0	0.00 %	4	11	36.36 %	8	14	57.14 %	6	14	42.86 %
Leg. Dist. 22	0	0	0.00 %	6	19	31.58 %	7	21	33.33 %	3	11	27.27 %
Leg. Dist. 23	0	0	0.00 %	6	8	75.00 %	6	11	54.55 %	4	7	57.14 %
Leg. Dist. 24	0	0	0.00 %	3	5	60.00 %	1	2	50.00 %	3	5	60.00 %
Leg. Dist. 25	0	0	0.00 %	2	7	28.57 %	5	9	55.56 %	10	13	76.92 %
Leg. Dist. 26	0	0	0.00 %	6	7	85.71 %	7	12	58.33 %	9	14	64.29 %
Leg. Dist. 27	0	0	0.00 %	7	18	38.89 %	7	19	36.84 %	5	14	35.71 %
Leg. Dist. 28	0	0	0.00 %	0	8	0.00 %	10	18	55.56 %	3	15	20.00 %
Leg. Dist. 29	0	0	0.00 %	2	11	18.18 %	7	20	35.00 %	2	13	15.38 %
<b>TOTAL:</b>	<b>0</b>	<b>0</b>	<b>0.00 %</b>	<b>37</b>	<b>96</b>	<b>38.54 %</b>	<b>60</b>	<b>128</b>	<b>46.88 %</b>	<b>48</b>	<b>110</b>	<b>43.64 %</b>
<b>TOWNS</b>												
Brighton	0	0	0.00 %	3	5	60.00 %	5	6	83.33 %	5	5	100.00 %
Chili	0	0	0.00 %	2	3	66.67 %	2	3	66.67 %	4	8	50.00 %
Clarkson	0	0	0.00 %	1	1	100.00 %	1	2	50.00 %	2	3	66.67 %
East Rochester	0	0	0.00 %	2	3	66.67 %	2	6	33.33 %	0	2	0.00 %
Gates	0	0	0.00 %	1	1	100.00 %	4	8	50.00 %	9	12	75.00 %
Greece	0	0	0.00 %	9	13	69.23 %	20	34	58.82 %	26	41	63.41 %
Hamlin	0	0	0.00 %	2	2	100.00 %	2	4	50.00 %	1	1	100.00 %
Henrietta	0	0	0.00 %	0	1	0.00 %	2	3	66.67 %	11	15	73.33 %
Irondequoit	0	0	0.00 %	4	9	44.44 %	7	11	63.64 %	13	16	81.25 %
Mendon	0	0	0.00 %	0	3	0.00 %	0	0	0.00 %	0	1	0.00 %
Ogden	0	0	0.00 %	1	1	100.00 %	6	7	85.71 %	4	10	40.00 %
Parma	0	0	0.00 %	0	1	0.00 %	3	5	60.00 %	3	5	60.00 %
Penfield	0	0	0.00 %	1	4	25.00 %	1	3	33.33 %	4	6	66.67 %
Perinton	0	0	0.00 %	5	6	83.33 %	5	8	62.50 %	2	3	66.67 %
Pittsford	0	0	0.00 %	3	3	100.00 %	0	0	0.00 %	4	6	66.67 %
Riga	0	0	0.00 %	0	0	0.00 %	3	3	100.00 %	0	2	0.00 %
Rush	0	0	0.00 %	0	0	0.00 %	2	2	100.00 %	0	1	0.00 %
Sweden	0	0	0.00 %	1	1	100.00 %	1	3	33.33 %	1	3	33.33 %
Webster	0	0	0.00 %	2	2	100.00 %	2	6	33.33 %	7	9	77.78 %
Wheatland	0	0	0.00 %	2	2	100.00 %	0	1	0.00 %	1	2	50.00 %
<b>TOTAL:</b>	<b>0</b>	<b>0</b>	<b>0.00 %</b>	<b>39</b>	<b>61</b>	<b>63.93 %</b>	<b>68</b>	<b>115</b>	<b>59.13 %</b>	<b>97</b>	<b>151</b>	<b>64.24 %</b>
<b>GRAND TOTAL:</b>	<b>0</b>	<b>0</b>	<b>0.00 %</b>	<b>76</b>	<b>157</b>	<b>48.41 %</b>	<b>128</b>	<b>243</b>	<b>52.67 %</b>	<b>145</b>	<b>261</b>	<b>55.56 %</b>

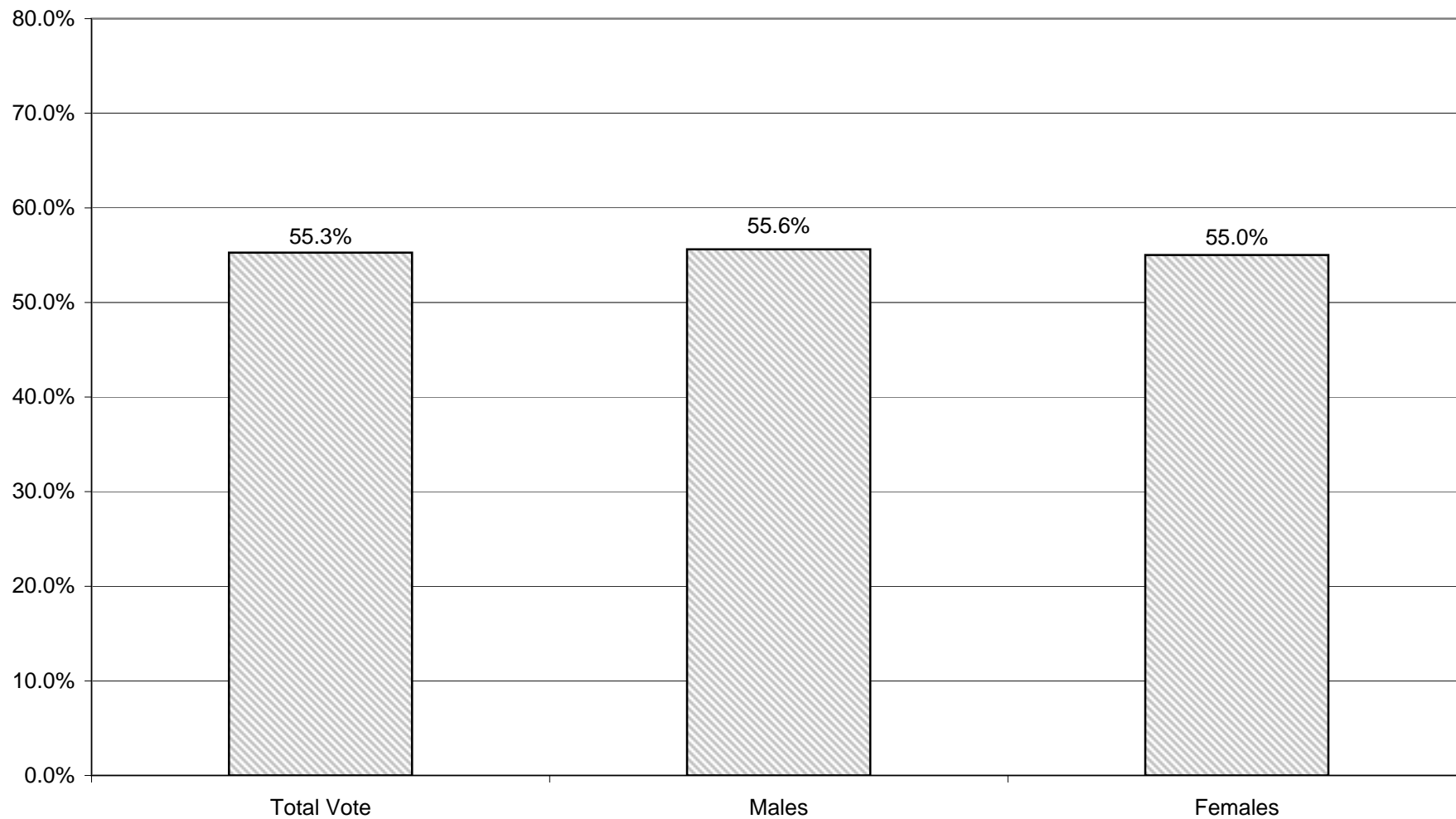


2004 GENERAL ELECTION  
WORKING FAMILIES TURNOUT BY AGE

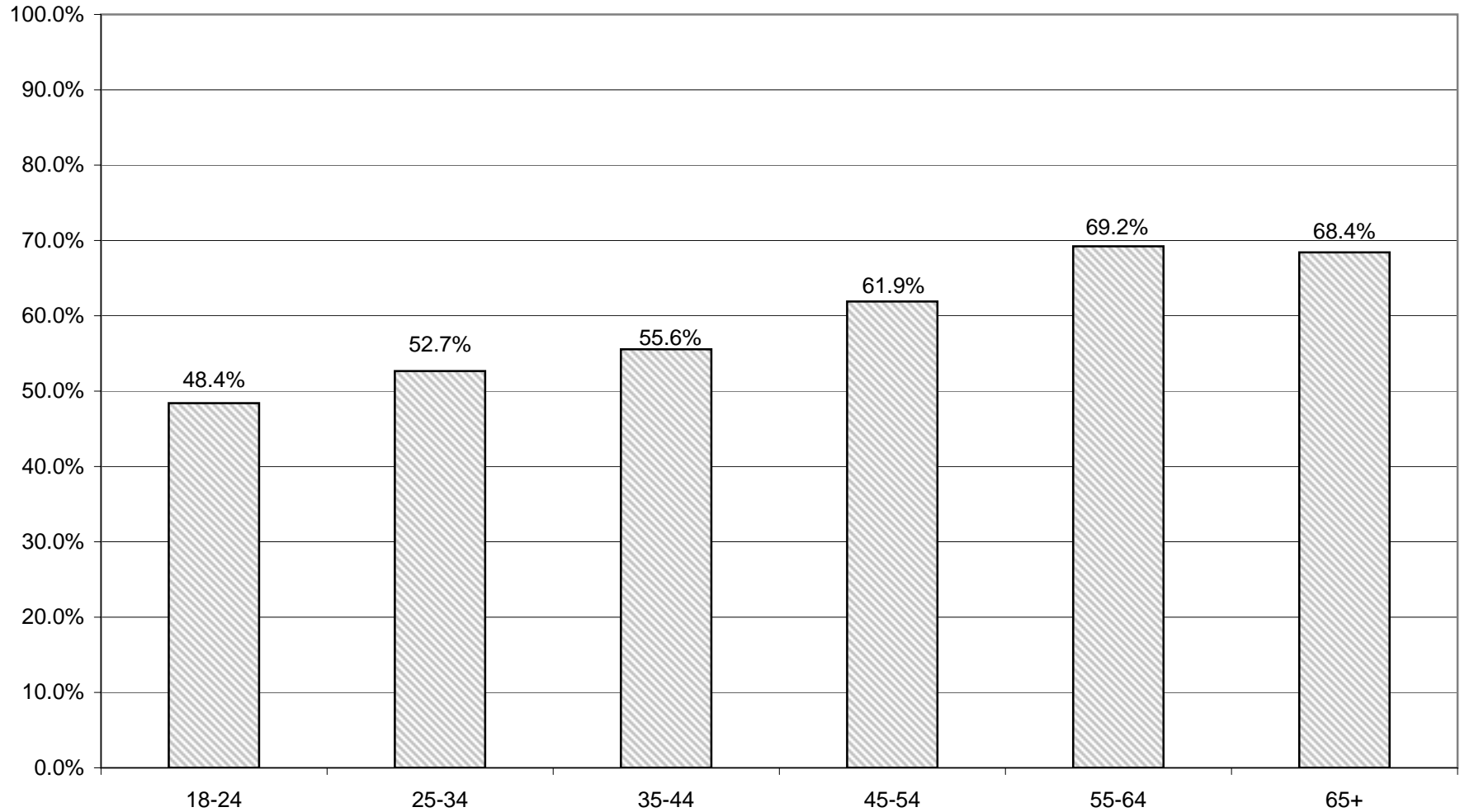
LT/LD SUMMARY  
Part 2 of 2

LEGISLATIVE DISTRICT OR TOWN CITY	45-54			55-64			65+		
	VOTED	REGISTERED	TURNOUT	VOTED	REGISTERED	TURNOUT	VOTED	REGISTERED	TURNOUT
Leg. Dist. 06	0	0	0.00 %	0	0	0.00 %	0	0	0.00 %
Leg. Dist. 07	1	1	100.00 %	0	0	0.00 %	0	0	0.00 %
Leg. Dist. 21	3	7	42.86 %	0	0	0.00 %	0	0	0.00 %
Leg. Dist. 22	4	9	44.44 %	1	1	100.00 %	0	0	0.00 %
Leg. Dist. 23	3	6	50.00 %	0	1	0.00 %	1	1	100.00 %
Leg. Dist. 24	0	1	0.00 %	1	1	100.00 %	0	0	0.00 %
Leg. Dist. 25	0	3	0.00 %	1	1	100.00 %	0	1	0.00 %
Leg. Dist. 26	3	3	100.00 %	1	1	100.00 %	2	2	100.00 %
Leg. Dist. 27	3	6	50.00 %	2	2	100.00 %	1	2	50.00 %
Leg. Dist. 28	3	6	50.00 %	1	2	50.00 %	0	1	0.00 %
Leg. Dist. 29	1	1	100.00 %	0	2	0.00 %	0	0	0.00 %
<b>TOTAL:</b>	<b>21</b>	<b>43</b>	<b>48.84 %</b>	<b>2</b>	<b>11</b>	<b>63.64 %</b>	<b>4</b>	<b>7</b>	<b>57.14 %</b>
<b>TOWNS</b>									
Brighton	3	3	100.00 %	1	4	25.00 %	0	0	0.00 %
Chili	11	16	68.75 %	1	1	100.00 %	0	0	0.00 %
Clarkson	1	2	50.00 %	0	0	0.00 %	0	0	0.00 %
East Rochester	0	0	0.00 %	1	1	100.00 %	0	0	0.00 %
Gates	2	4	50.00 %	2	2	100.00 %	0	0	0.00 %
Greece	13	18	72.22 %	6	6	100.00 %	3	5	60.00 %
Hamlin	1	1	100.00 %	0	0	0.00 %	0	0	0.00 %
Henrietta	2	5	40.00 %	2	3	66.67 %	1	1	100.00 %
Irondequoit	3	4	75.00 %	3	3	100.00 %	1	1	100.00 %
Mendon	0	0	0.00 %	0	0	0.00 %	1	0	0.00 %
Ogden	3	3	100.00 %	0	0	0.00 %	0	0	0.00 %
Parma	5	6	83.33 %	2	2	100.00 %	1	1	100.00 %
Penfield	4	7	57.14 %	1	3	33.33 %	1	1	100.00 %
Perinton	1	3	33.33 %	0	1	0.00 %	0	0	0.00 %
Pittsford	2	2	100.00 %	1	1	100.00 %	1	1	100.00 %
Riga	1	3	33.33 %	0	0	0.00 %	0	0	0.00 %
Rush	2	2	100.00 %	0	0	0.00 %	0	0	0.00 %
Sweden	1	2	50.00 %	0	0	0.00 %	0	0	0.00 %
Webster	2	2	100.00 %	0	1	0.00 %	1	2	50.00 %
Wheatland	0	0	0.00 %	0	0	0.00 %	0	0	0.00 %
<b>TOTAL:</b>	<b>57</b>	<b>83</b>	<b>68.67 %</b>	<b>3</b>	<b>28</b>	<b>71.43 %</b>	<b>9</b>	<b>12</b>	<b>75.00 %</b>
<b>GRAND TOTAL:</b>	<b>78</b>	<b>126</b>	<b>61.90 %</b>	<b>27</b>	<b>39</b>	<b>69.23 %</b>	<b>13</b>	<b>19</b>	<b>68.42 %</b>

# WORKING FAMILIES TURNOUT - TOTAL AND GENDER 2004 GENERAL ELECTION



## WORKING FAMILIES TURNOUT BY AGE GROUP 2004 GENERAL ELECTION



# **BLANKS SUMMARY**

2004 GENERAL ELECTION  
BLANK TURNOUT BY GENDER

LT/LD SUMMARY

LEGISLATIVE DISTRICT OR TOWN <b>CITY</b>	TOTAL VOTERS			MALES			FEMALES		
	VOTED	REGISTERED	TURNOUT	VOTED	REGISTERED	TURNOUT	VOTED	REGISTERED	TURNOUT
Leg. Dist. 06	586	831	70.52 %	268	381	70.34 %	318	450	70.67 %
Leg. Dist. 07	252	375	67.20 %	124	187	66.31 %	128	188	68.09 %
Leg. Dist. 21	1,950	2,988	65.26 %	953	1,449	65.77 %	997	1,539	64.78 %
Leg. Dist. 22	717	1,712	41.88 %	278	750	37.07 %	439	962	45.63 %
Leg. Dist. 23	2,768	3,566	77.62 %	1,413	1,849	76.42 %	1,355	1,717	78.92 %
Leg. Dist. 24	1,444	1,976	73.08 %	748	1,028	72.76 %	696	948	73.42 %
Leg. Dist. 25	1,159	1,924	60.24 %	604	1,002	60.28 %	555	922	60.20 %
Leg. Dist. 26	1,064	1,685	63.15 %	513	803	63.89 %	551	882	62.47 %
Leg. Dist. 27	1,297	2,184	59.39 %	614	1,062	57.82 %	683	1,122	60.87 %
Leg. Dist. 28	1,131	2,167	52.19 %	511	933	54.77 %	620	1,234	50.24 %
Leg. Dist. 29	1,178	2,213	53.23 %	530	969	54.70 %	648	1,244	52.09 %
<b>TOTAL:</b>	<b>13,546</b>	<b>21,621</b>	<b>62.65 %</b>	<b>6,556</b>	<b>10,413</b>	<b>62.96 %</b>	<b>6,990</b>	<b>11,208</b>	<b>62.37 %</b>
<b>TOWNS</b>									
Brighton	4,415	5,631	78.41 %	2,142	2,748	77.95 %	2,273	2,883	78.84 %
Chili	3,448	4,653	74.10 %	1,666	2,272	73.33 %	1,782	2,381	74.84 %
Clarkson	631	871	72.45 %	324	447	72.48 %	307	424	72.41 %
East Rochester	780	1,054	74.00 %	344	471	73.04 %	436	583	74.79 %
Gates	2,990	4,462	67.01 %	1,421	2,148	66.15 %	1,569	2,314	67.80 %
Greece	11,564	16,097	71.84 %	5,444	7,632	71.33 %	6,120	8,465	72.30 %
Hamlin	909	1,331	68.29 %	456	665	68.57 %	453	666	68.02 %
Henrietta	3,822	5,171	73.91 %	1,914	2,590	73.90 %	1,908	2,581	73.92 %
Irondequoit	6,756	8,902	75.89 %	3,200	4,257	75.17 %	3,556	4,645	76.56 %
Mendon	1,219	1,484	82.14 %	600	726	82.64 %	619	758	81.66 %
Ogden	2,409	3,241	74.33 %	1,190	1,596	74.56 %	1,219	1,645	74.10 %
Parma	2,014	2,785	72.32 %	964	1,334	72.26 %	1,050	1,451	72.36 %
Penfield	5,111	6,552	78.01 %	2,472	3,159	78.25 %	2,639	3,393	77.78 %
Perinton	6,788	8,471	80.13 %	3,301	4,146	79.62 %	3,487	4,325	80.62 %
Pittsford	3,785	4,797	78.90 %	1,844	2,312	79.76 %	1,941	2,485	78.11 %
Riga	696	923	75.41 %	355	471	75.37 %	341	452	75.44 %
Rush	540	679	79.53 %	266	344	77.33 %	274	335	81.79 %
Sweden	1,189	1,647	72.19 %	577	790	73.04 %	612	857	71.41 %
Webster	5,879	7,513	78.25 %	2,791	3,600	77.53 %	3,088	3,913	78.92 %
Wheatland	631	813	77.61 %	302	392	77.04 %	329	421	78.15 %
<b>TOTAL:</b>	<b>65,576</b>	<b>87,077</b>	<b>75.31 %</b>	<b>31,573</b>	<b>42,100</b>	<b>75.00 %</b>	<b>34,003</b>	<b>44,977</b>	<b>75.60 %</b>
<b>GRAND TOTAL:</b>	<b>79,122</b>	<b>108,698</b>	<b>72.79 %</b>	<b>38,129</b>	<b>52,513</b>	<b>72.61 %</b>	<b>40,993</b>	<b>56,185</b>	<b>72.96 %</b>

2004 GENERAL ELECTION  
BLANK TURNOUT BY AGE

LT/LD SUMMARY  
Part 1 of 2

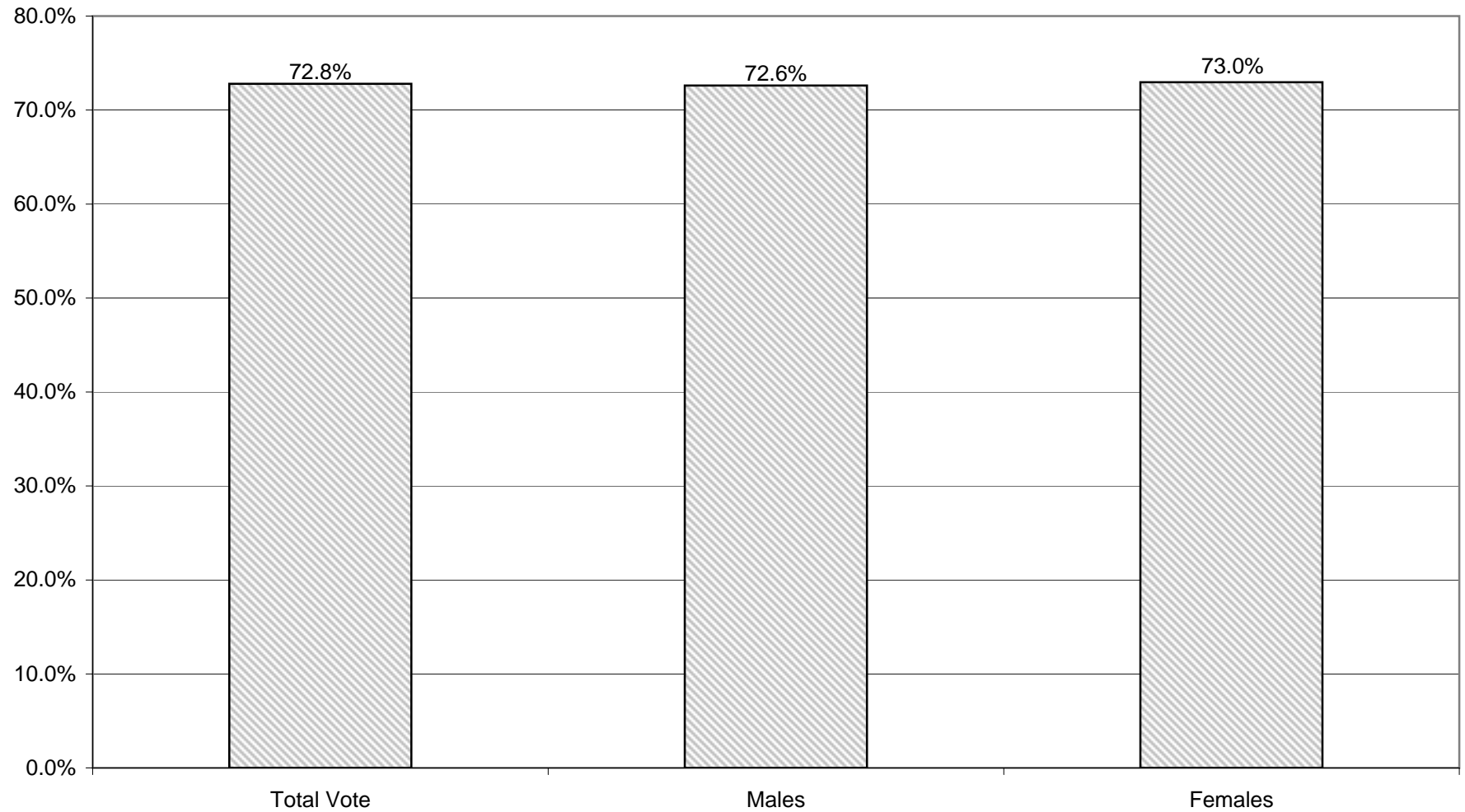
LEGISLATIVE DISTRICT OR TOWN CITY	NDOB			18-24			25-34			35-44		
	VOTED	REGISTERED	TURNOUT	VOTED	REGISTERED	TURNOUT	VOTED	REGISTERED	TURNOUT	VOTED	REGISTERED	TURNOUT
Leg. Dist. 06	3	3	100.00 %	47	86	54.65 %	113	178	63.48 %	121	173	69.94 %
Leg. Dist. 07	1	1	100.00 %	17	37	45.95 %	33	62	53.23 %	46	76	60.53 %
Leg. Dist. 21	11	11	100.00 %	230	414	55.56 %	558	910	61.32 %	391	594	65.82 %
Leg. Dist. 22	5	7	71.43 %	130	345	37.68 %	191	499	38.28 %	130	355	36.62 %
Leg. Dist. 23	22	25	88.00 %	383	522	73.37 %	877	1,230	71.30 %	543	674	80.56 %
Leg. Dist. 24	9	12	75.00 %	164	245	66.94 %	415	599	69.28 %	266	364	73.08 %
Leg. Dist. 25	5	5	100.00 %	263	466	56.44 %	293	490	59.80 %	203	370	54.86 %
Leg. Dist. 26	5	5	100.00 %	132	245	53.88 %	235	443	53.05 %	244	377	64.72 %
Leg. Dist. 27	11	14	78.57 %	185	347	53.31 %	289	575	50.26 %	246	435	56.55 %
Leg. Dist. 28	13	18	72.22 %	175	375	46.67 %	224	529	42.34 %	233	490	47.55 %
Leg. Dist. 29	17	20	85.00 %	163	361	45.15 %	219	524	41.79 %	248	438	56.62 %
<b>TOTAL:</b>	<b>102</b>	<b>121</b>	<b>84.30 %</b>	<b>1,889</b>	<b>3,443</b>	<b>54.86 %</b>	<b>3,447</b>	<b>6,039</b>	<b>57.08 %</b>	<b>2,671</b>	<b>4,346</b>	<b>61.46 %</b>
<b>TOWNS</b>												
Brighton	34	41	82.93 %	430	706	60.91 %	747	1,101	67.85 %	739	916	80.68 %
Chili	18	19	94.74 %	427	740	57.70 %	524	884	59.28 %	728	956	76.15 %
Clarkson	0	0	0.00 %	69	119	57.98 %	88	170	51.76 %	159	214	74.30 %
East Rochester	9	11	81.82 %	96	149	64.43 %	149	220	67.73 %	151	213	70.89 %
Gates	10	12	83.33 %	315	597	52.76 %	474	897	52.84 %	601	922	65.18 %
Greece	82	92	89.13 %	1,423	2,511	56.67 %	1,546	2,800	55.21 %	2,202	3,040	72.43 %
Hamlin	1	1	100.00 %	121	209	57.89 %	116	245	47.35 %	235	330	71.21 %
Henrietta	8	12	66.67 %	465	720	64.58 %	630	1,050	60.00 %	817	1,095	74.61 %
Irondequoit	83	95	87.37 %	603	1,022	59.00 %	966	1,528	63.22 %	1,303	1,677	77.70 %
Mendon	4	4	100.00 %	112	176	63.64 %	94	161	58.39 %	301	354	85.03 %
Ogden	10	12	83.33 %	269	435	61.84 %	304	575	52.87 %	587	737	79.65 %
Parma	2	2	100.00 %	238	438	54.34 %	256	478	53.56 %	457	605	75.54 %
Penfield	28	33	84.85 %	485	810	59.88 %	575	934	61.56 %	1,050	1,319	79.61 %
Perinton	12	13	92.31 %	643	1,028	62.55 %	788	1,323	59.56 %	1,379	1,657	83.22 %
Pittsford	13	14	92.86 %	328	582	56.36 %	316	619	51.05 %	748	908	82.38 %
Riga	1	1	100.00 %	77	130	59.23 %	71	126	56.35 %	157	209	75.12 %
Rush	0	0	0.00 %	38	65	58.46 %	52	88	59.09 %	128	151	84.77 %
Sweden	0	0	0.00 %	185	307	60.26 %	182	299	60.87 %	224	319	70.22 %
Webster	36	39	92.31 %	575	872	65.94 %	697	1,184	58.87 %	1,295	1,642	78.87 %
Wheatland	3	3	100.00 %	64	105	60.95 %	80	134	59.70 %	157	196	80.10 %
<b>TOTAL:</b>	<b>354</b>	<b>404</b>	<b>87.62 %</b>	<b>6,963</b>	<b>11,721</b>	<b>59.41 %</b>	<b>8,655</b>	<b>14,816</b>	<b>58.42 %</b>	<b>13,418</b>	<b>17,460</b>	<b>76.85 %</b>
<b>GRAND TOTAL:</b>	<b>456</b>	<b>525</b>	<b>86.86 %</b>	<b>8,852</b>	<b>15,164</b>	<b>58.38 %</b>	<b>12,102</b>	<b>20,855</b>	<b>58.03 %</b>	<b>16,089</b>	<b>21,806</b>	<b>73.78 %</b>

2004 GENERAL ELECTION  
BLANK TURNOUT BY AGE

LT/LD SUMMARY  
Part 2 of 2

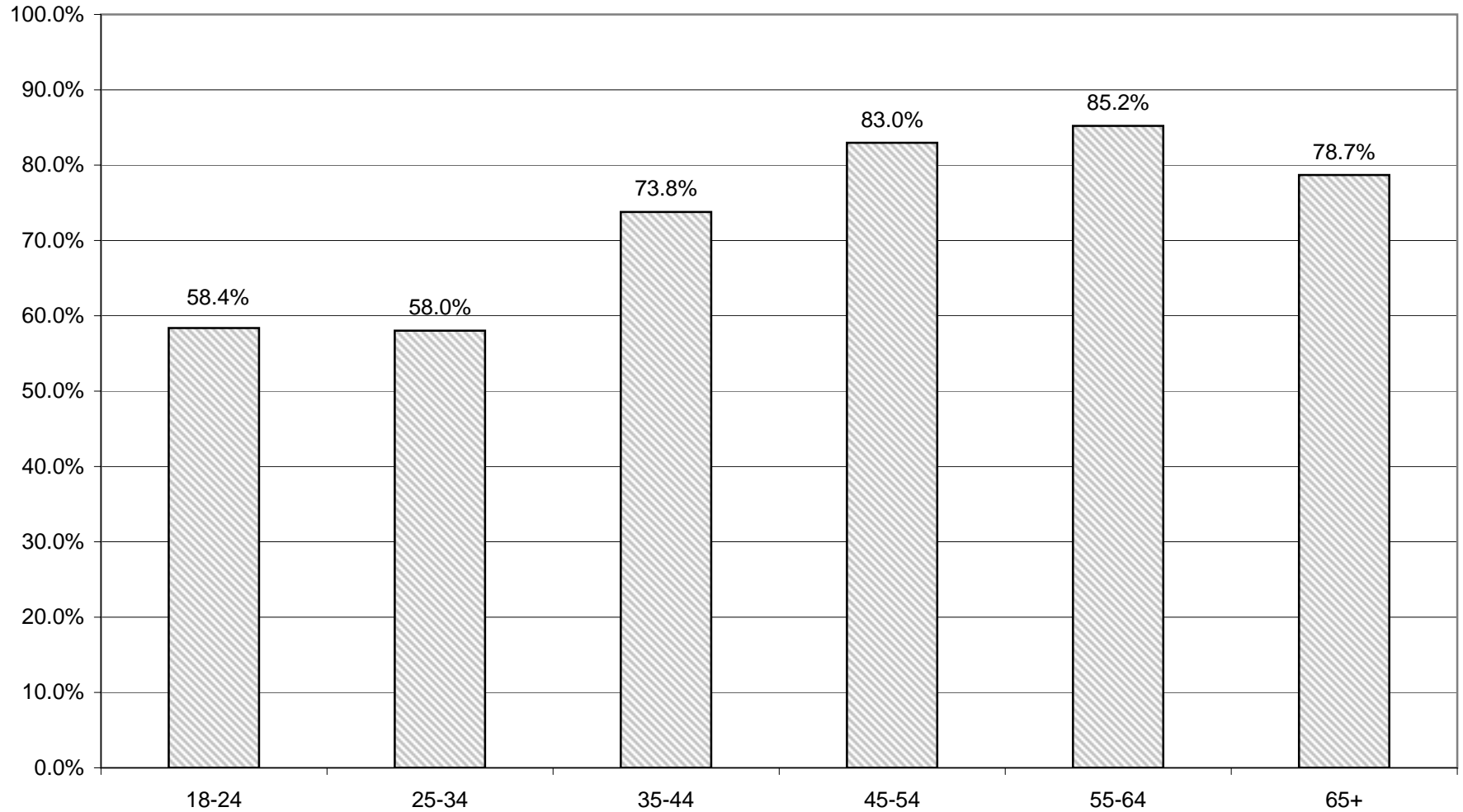
LEGISLATIVE DISTRICT OR TOWN CITY	45-54			55-64			65+		
	VOTED	REGISTERED	TURNOUT	VOTED	REGISTERED	TURNOUT	VOTED	REGISTERED	TURNOUT
Leg. Dist. 06	165	202	81.68 %	71	94	75.53 %	66	95	69.47 %
Leg. Dist. 07	70	87	80.46 %	46	62	74.19 %	39	50	78.00 %
Leg. Dist. 21	369	528	69.89 %	238	312	76.28 %	153	219	69.86 %
Leg. Dist. 22	140	281	49.82 %	73	146	50.00 %	48	79	60.76 %
Leg. Dist. 23	426	508	83.86 %	325	368	88.32 %	192	239	80.33 %
Leg. Dist. 24	276	335	82.39 %	164	210	78.10 %	150	211	71.09 %
Leg. Dist. 25	170	266	63.91 %	128	163	78.53 %	97	164	59.15 %
Leg. Dist. 26	251	327	76.76 %	132	180	73.33 %	65	108	60.19 %
Leg. Dist. 27	299	420	71.19 %	178	256	69.53 %	89	137	64.96 %
Leg. Dist. 28	245	390	62.82 %	149	214	69.63 %	92	151	60.93 %
Leg. Dist. 29	246	412	59.71 %	174	256	67.97 %	111	202	54.95 %
<b>TOTAL:</b>	<b>2,657</b>	<b>3,756</b>	<b>70.74 %</b>	<b>1,678</b>	<b>2,261</b>	<b>74.21 %</b>	<b>1,102</b>	<b>1,655</b>	<b>66.59 %</b>
<b>TOWNS</b>									
Brighton	1,028	1,161	88.54 %	695	778	89.33 %	742	928	79.96 %
Chili	932	1,097	84.96 %	509	593	85.83 %	310	364	85.16 %
Clarkson	188	219	85.84 %	79	92	85.87 %	48	57	84.21 %
East Rochester	175	218	80.28 %	118	135	87.41 %	82	108	75.93 %
Gates	687	886	77.54 %	452	548	82.48 %	451	600	75.17 %
Greece	3,204	3,860	83.01 %	1,882	2,226	84.55 %	1,225	1,568	78.13 %
Hamlin	258	316	81.65 %	129	162	79.63 %	49	68	72.06 %
Henrietta	900	1,102	81.67 %	599	693	86.44 %	403	499	80.76 %
Irondequoit	1,699	2,040	83.28 %	1,108	1,272	87.11 %	994	1,268	78.39 %
Mendon	376	416	90.38 %	233	247	94.33 %	99	126	78.57 %
Ogden	711	852	83.45 %	358	416	86.06 %	170	214	79.44 %
Parma	587	693	84.70 %	327	371	88.14 %	147	198	74.24 %
Penfield	1,415	1,640	86.28 %	934	1,058	88.28 %	624	758	82.32 %
Perinton	1,868	2,070	90.24 %	1,304	1,447	90.12 %	794	933	85.10 %
Pittsford	991	1,103	89.85 %	761	846	89.95 %	628	725	86.62 %
Riga	217	252	86.11 %	106	131	80.92 %	67	74	90.54 %
Rush	171	200	85.50 %	104	121	85.95 %	47	54	87.04 %
Sweden	330	399	82.71 %	185	208	88.94 %	83	115	72.17 %
Webster	1,594	1,830	87.10 %	986	1,121	87.96 %	696	825	84.36 %
Wheatland	180	199	90.45 %	88	104	84.62 %	59	72	81.94 %
<b>TOTAL:</b>	<b>17,511</b>	<b>20,553</b>	<b>85.20 %</b>	<b>10,957</b>	<b>12,569</b>	<b>87.17 %</b>	<b>7,718</b>	<b>9,554</b>	<b>80.78 %</b>
<b>GRAND TOTAL:</b>	<b>20,168</b>	<b>24,309</b>	<b>82.97 %</b>	<b>12,635</b>	<b>14,830</b>	<b>85.20 %</b>	<b>8,820</b>	<b>11,209</b>	<b>78.69 %</b>

# BLANKS TURNOUT - TOTAL AND GENDER 2004 GENERAL ELECTION



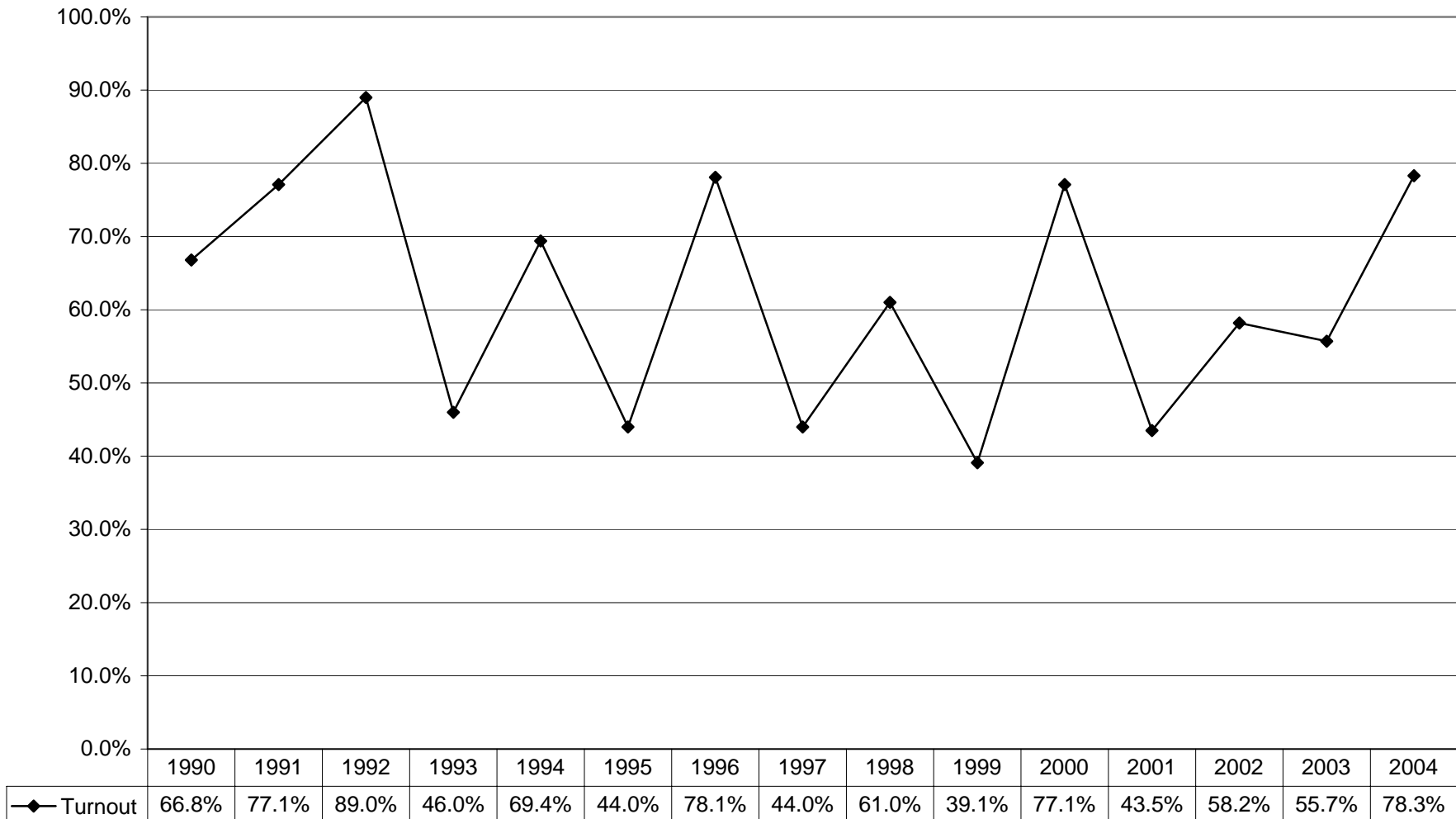


## BLANKS TURNOUT BY AGE GROUP 2004 GENERAL ELECTION

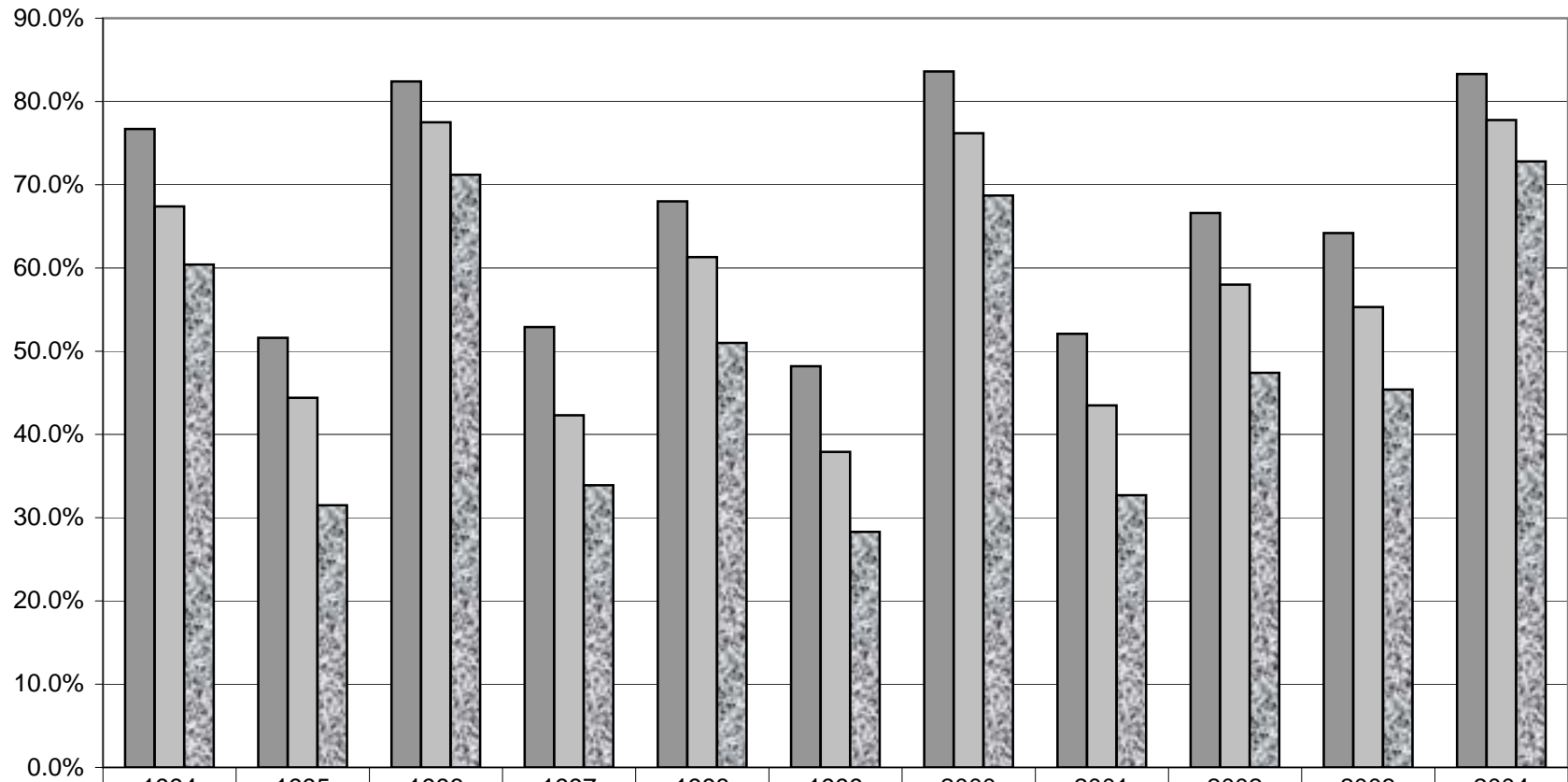


# **HISTORICAL DATA**

# VOTER TURNOUT FOR THE GENERAL ELECTION 1990 Through 2004



## VOTER TURNOUT BY PARTY 1994 Through 2004 General Elections



	1994	1995	1996	1997	1998	1999	2000	2001	2002	2003	2004
■ Republicans	76.7%	51.6%	82.4%	52.9%	68.0%	48.2%	83.6%	52.1%	66.6%	64.2%	83.3%
■ Democrats	67.4%	44.4%	77.5%	42.3%	61.3%	37.9%	76.2%	43.5%	58.0%	55.3%	77.8%
■ Blanks	60.4%	31.5%	71.2%	33.9%	51.0%	28.3%	68.7%	32.7%	47.4%	45.4%	72.8%